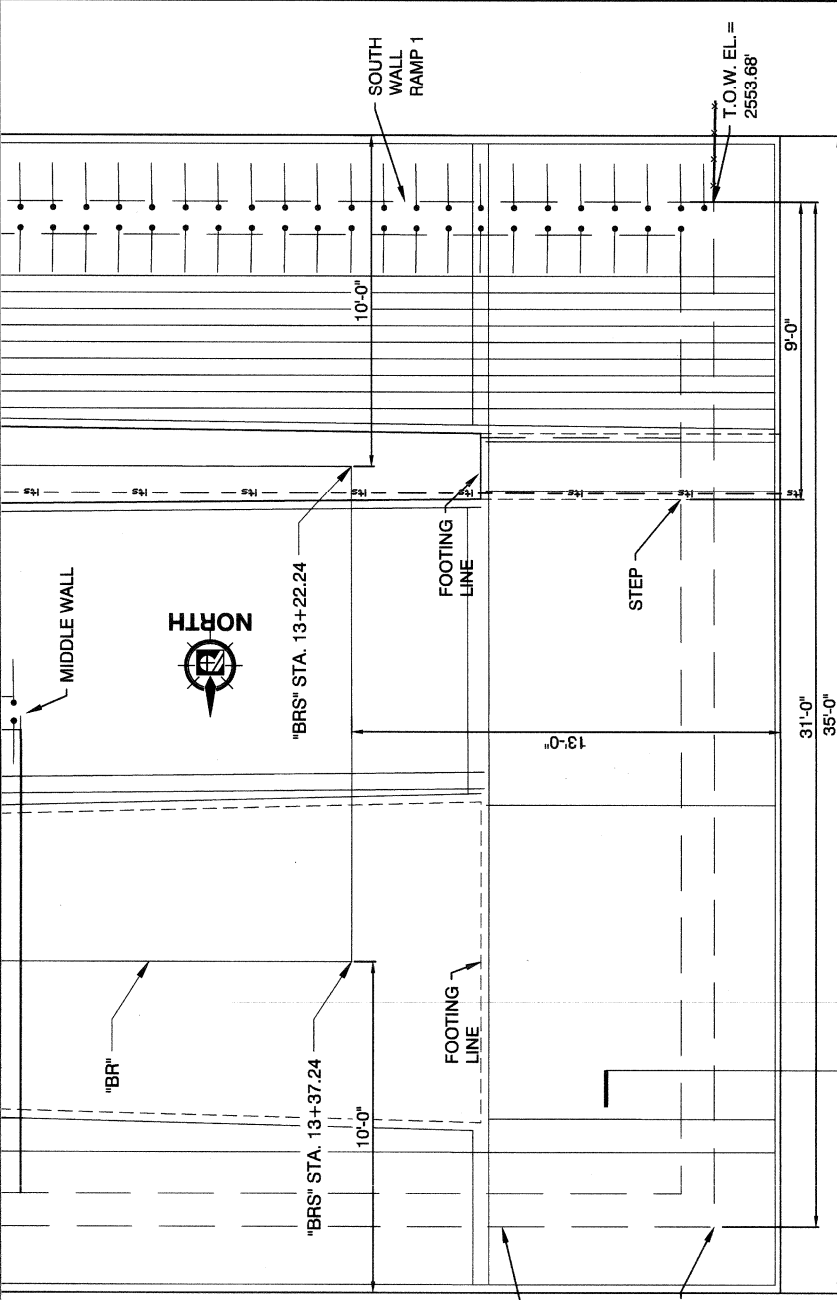
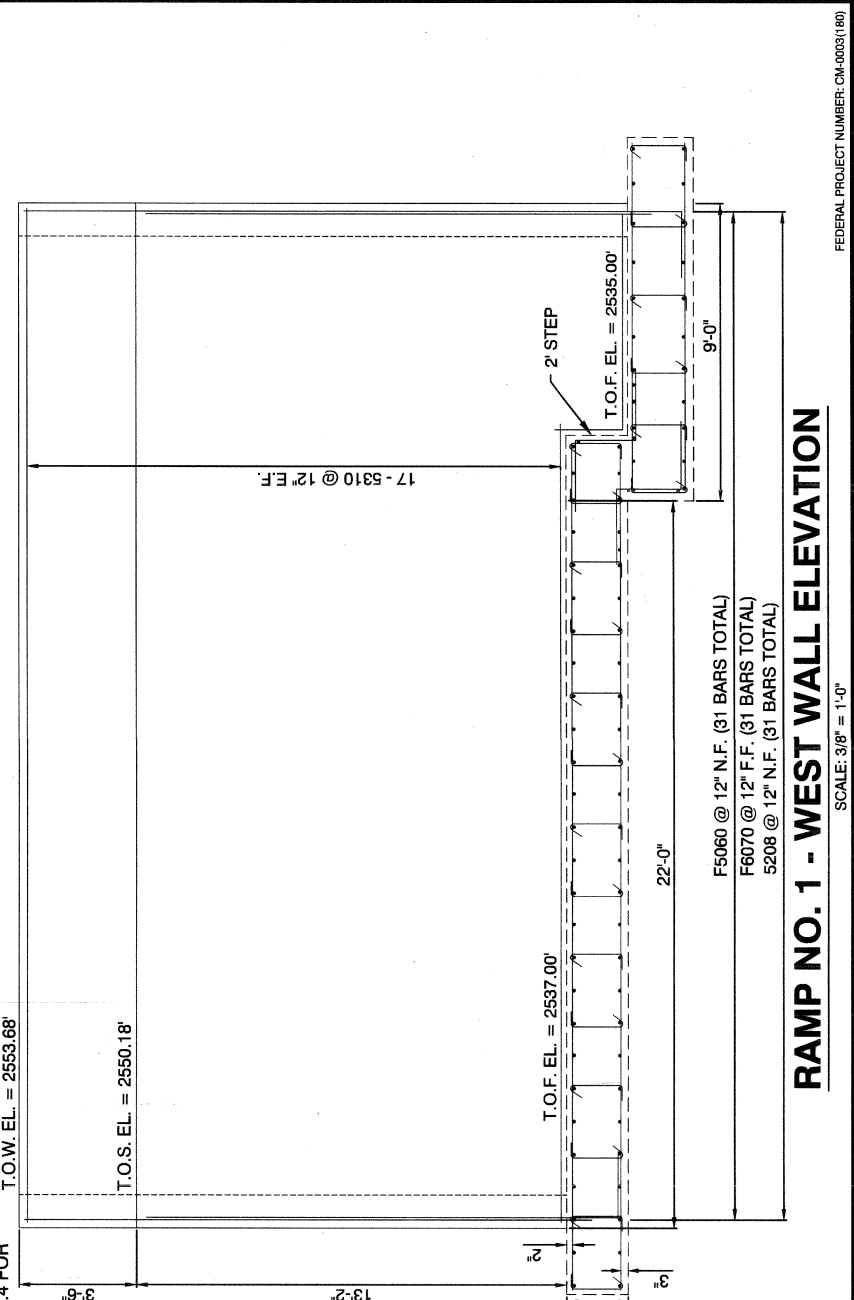
	<b>SHEET</b> <b>BRS-713</b> 57 OF 86 DRAWING NO. <b>676-22</b>
	TITLE <b>CIMARRON PEDESTRIAN BRIDGE AT SUMMERLIN PARKWAY</b> <b>PLAN AND ELEVATION RAMP NO. 1 EAST AND WEST WALL</b>
PREPARED FOR <b>CITY OF LAS VEGAS</b>	# 48938 DATE: JANUARY 2018 SUBMITTAL STAGE: 100% FINAL
DEPARTMENT OF PUBLIC WORKS CAPITAL PROJECT MGMT	DESIGNED BY: SR DRAWN BY: AG CHECKED BY: AP
8950 Smoke Ranch Road - Suite 110 Las Vegas, Nevada 89128 - (702) 252-6100 <b>POGEMEYER DESIGN GROUP</b>	BID # 17-48938
NO. DATE REVISIONS	REVISIONS

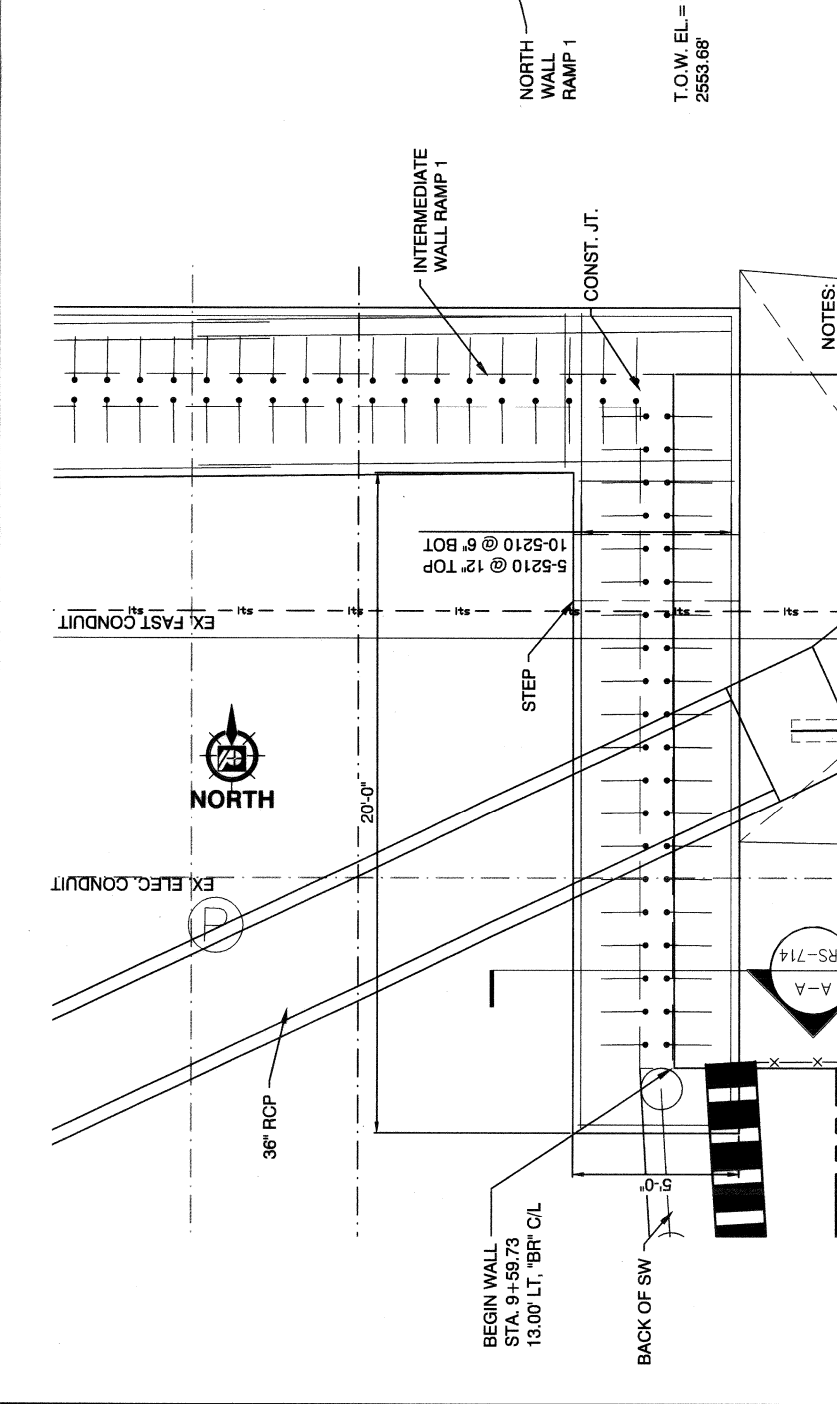


**RAMP NO. 1 - WEST WALL PLAN**  
 SCALE: 3/8" = 1'-0"

- NOTES:**
1. SEE SHEET BRS-714 FOR WEEPHOLE DETAILS
  2. SEE AESTHETIC DRAWINGS FOR AESTHETIC TREATMENTS.
  3. SEE ELECTRICAL DRAWINGS FOR CONDUIT PLACEMENT / DETAILS.
  4. SEE NDOT STANDARD DETAIL B-30.1.4 FOR EXPANSION JOINT AND WATERSTOP DETAILS.

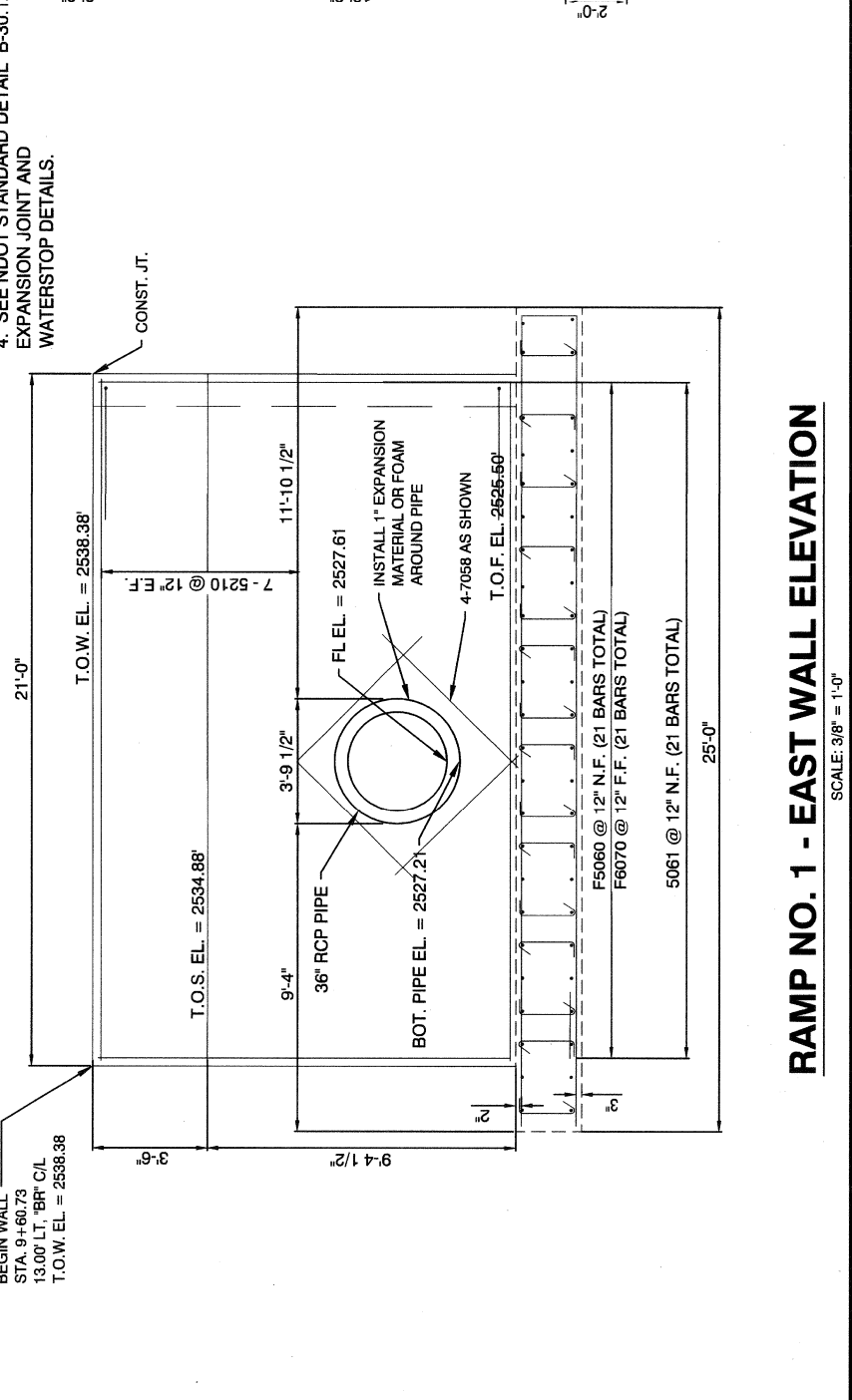


**RAMP NO. 1 - WEST WALL ELEVATION**  
 SCALE: 3/8" = 1'-0"



**RAMP NO. 1 - EAST WALL PLAN**  
 SCALE: 3/8" = 1'-0"

- NOTES:**
1. SEE SHEET BRS-714 FOR WEEPHOLE DETAILS
  2. SEE AESTHETIC DRAWINGS FOR AESTHETIC TREATMENTS.
  3. SEE ELECTRICAL DRAWINGS FOR CONDUIT PLACEMENT / DETAILS.
  4. SEE NDOT STANDARD DETAIL B-30.1.4 FOR EXPANSION JOINT AND WATERSTOP DETAILS.



**RAMP NO. 1 - EAST WALL ELEVATION**  
 SCALE: 3/8" = 1'-0"