

NO.	DATE	REVISIONS



CITY OF LAS VEGAS
 DEPARTMENT OF
 PUBLIC WORKS
 CAPITAL PROJECT MGMT

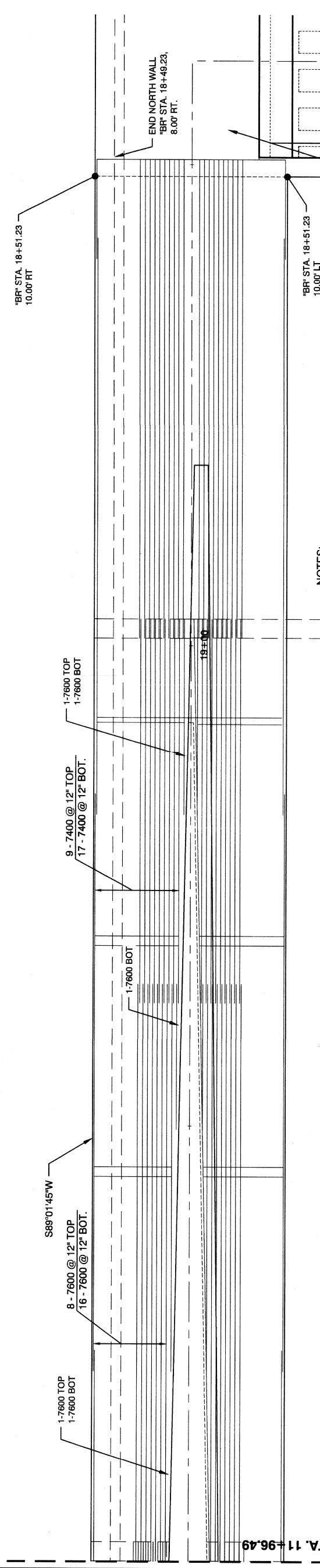
PREPARED BY
 POGGEMEYER
 DESIGN GROUP
 8900 Shovel March Road - Suite 110
 Las Vegas, Nevada 89128 - (702) 253-8100

H# 48938	BID# 17.48938
DATE: JANUARY 2018	DESIGNED BY: SR
SUBMITTAL STAGE:	DRAWN BY: AG
100% FINAL	CHECKED BY: AP

CIMARRON PEDESTRIAN BRIDGE
AT SUMMERLIN PARKWAY
PLAN AND ELEVATION
RAMP NO. 2 NORTH WALL

SHEET


BRS-712
 SHEET
 56 OF 86
 DRAWING NO.
676-22
 FEDERAL PROJECT NUMBER: CM-0003(1.80)



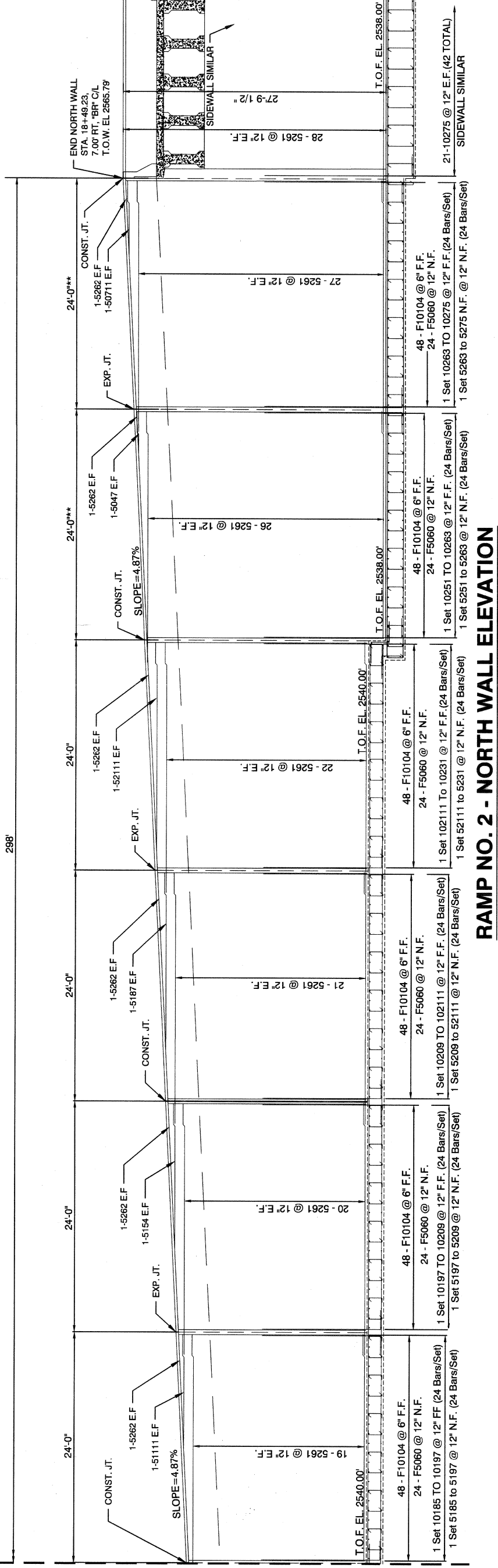
RAMP NO. 2 - NORTH WALL PLAN

SCALE: 3/16" = 1'-0"

- NOTES:**
- SEE SHEET BRS-714 FOR WEEP HOLE DETAILS.
 - SEE AESTHETIC DRAWINGS FOR AESTHETIC TREATMENTS.
 - SEE ELECTRICAL DRAWINGS FOR CONDUIT PLACEMENT / DETAILS.
 - SEE NDOT STANDARD DETAIL B-30.1.4 FOR EXPANSION JOINT AND WATERSTOP DETAILS.

**Shoring Required (See Sheet BRS-714 for Details)

298



RAMP NO. 2 - NORTH WALL ELEVATION

SCALE: 3/16" = 1'-0"