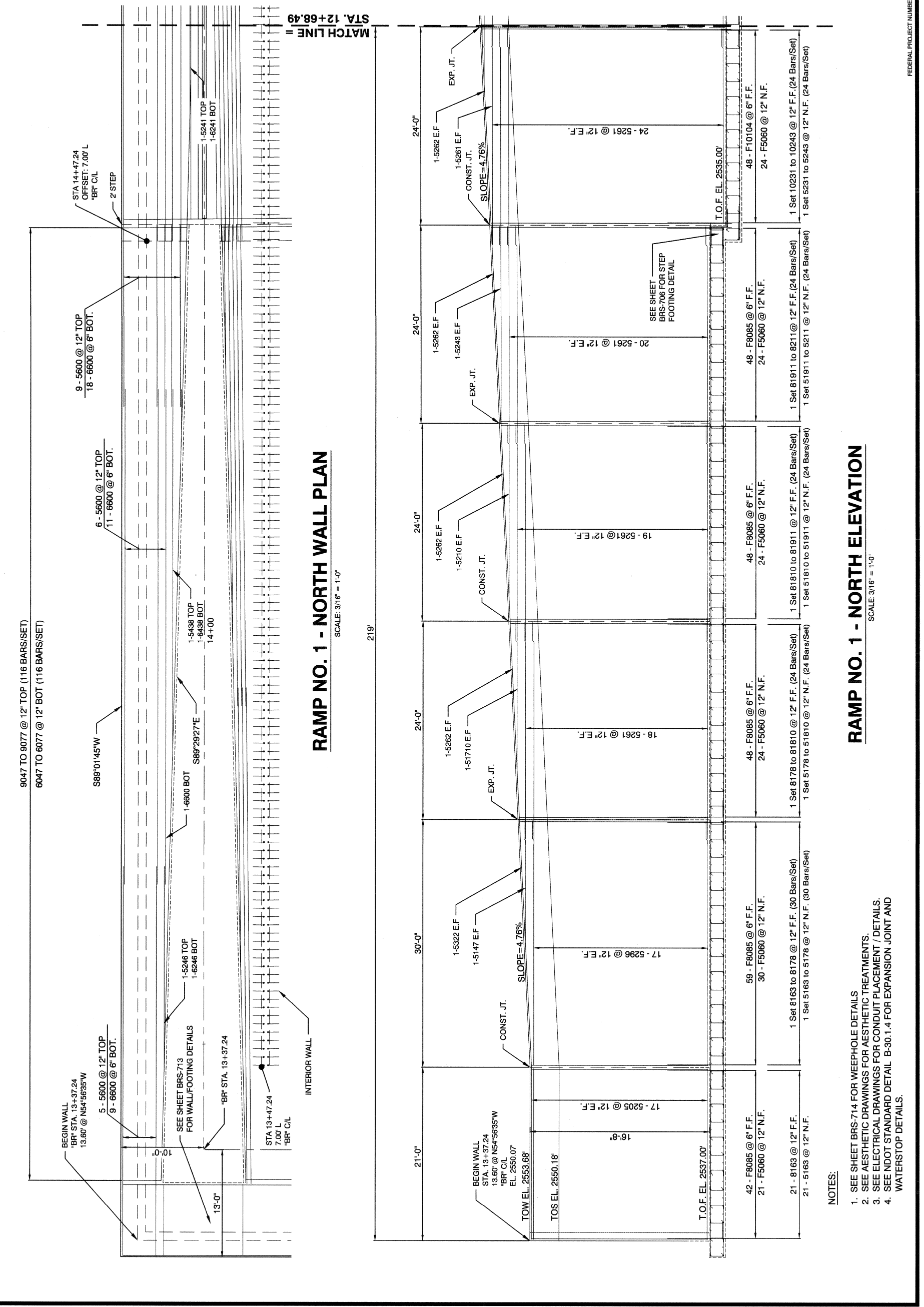


 CITY OF LAS VEGAS DEPARTMENT OF PUBLIC WORKS CAPITAL PROJECT MGMT	POGGEMEYER DESIGN GROUP <small>8880 Stryker Ranch Road - Suite 110 Las Vegas, Nevada 89128 - (702) 255-8100</small>	CHECKED BY: AP DRAWN BY: AG DESIGNED BY: SR BID# 17.48938	100% FINAL SUBMITTAL STAGE: DATE: JANUARY 2018 H# 48938	CIMARRON PEDESTRIAN BRIDGE AT SUMMERLIN PARKWAY RAMP NO. 1 NORTH WALL	 BRS-707 SHEET 51 OF 86 DRAWING NO. 676-22
---	---	--	--	--	---

 NORTH					
------------------	--	--	--	--	--



RAMP NO. 1 - NORTH WALL PLAN

SCALE: 3/16" = 1'-0"

RAMP NO. 1 - NORTH ELEVATION

SCALE: 3/16" = 1'-0"

- NOTES:**
1. SEE SHEET BRS-714 FOR WEEPHOLE DETAILS
 2. SEE AESTHETIC DRAWINGS FOR AESTHETIC TREATMENTS.
 3. SEE ELECTRICAL DRAWINGS FOR CONDUIT PLACEMENT / DETAILS.
 4. SEE INDOT STANDARD DETAIL B-30.1.4 FOR EXPANSION JOINT AND WATERSTOP DETAILS.