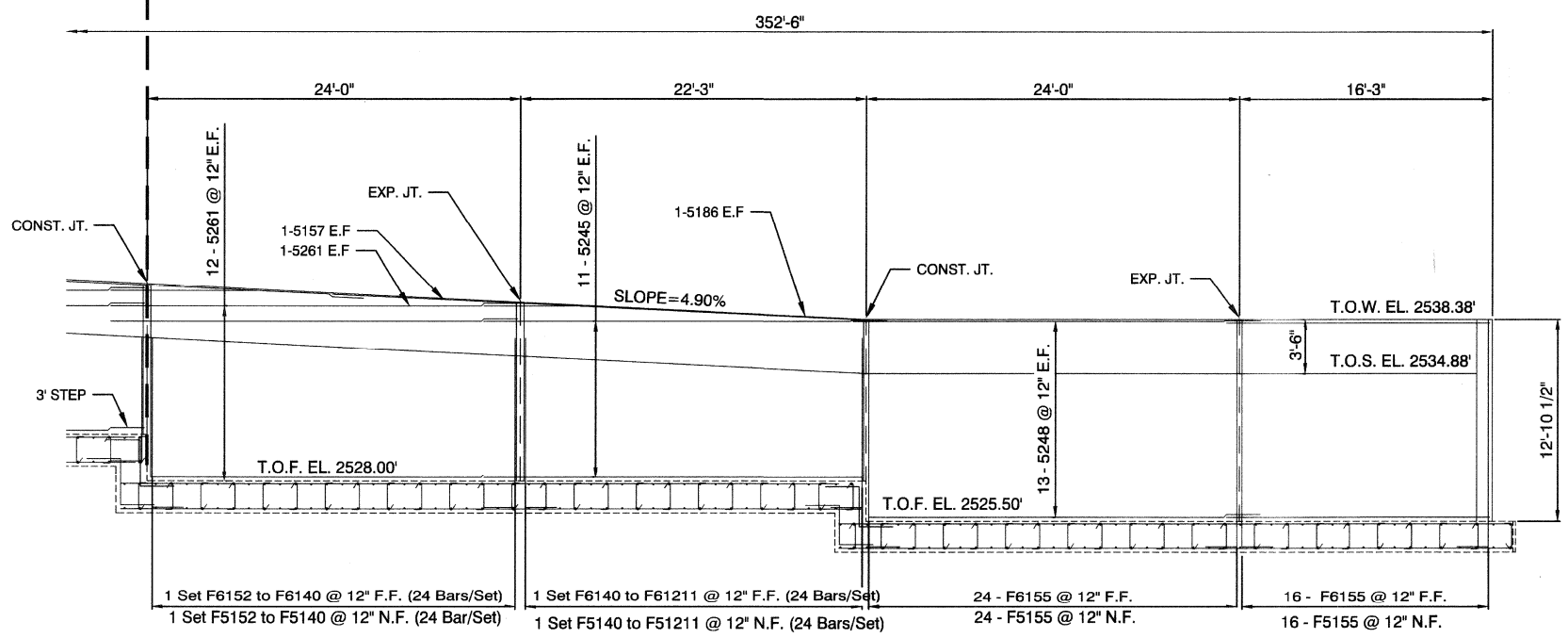
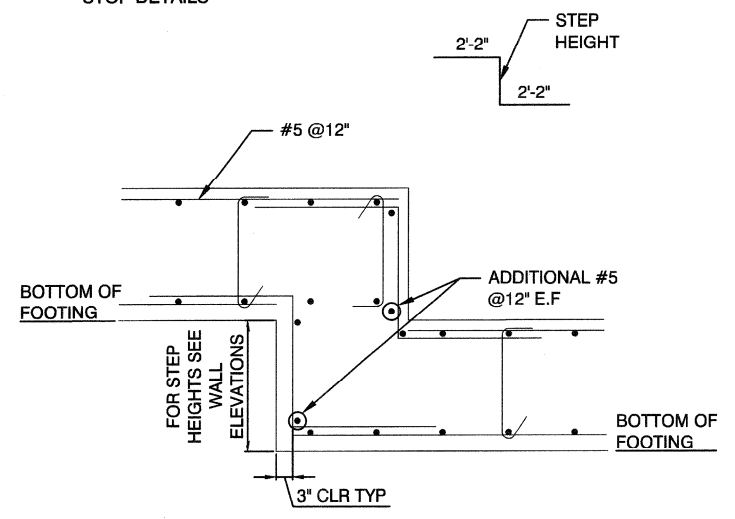


RAMP NO. 1 - INTERIOR WALL PLAN
SCALE: 3/16" = 1'-0"

- NOTES:**
1. SEE SHEET BRS-714 FOR WEEPHOLE DETAILS
 2. SEE AESTHETIC DRAWINGS FOR AESTHETIC TREATMENTS.
 3. SEE ELECTRICAL DRAWINGS FOR CONDUIT PLACEMENT / DETAILS.
 4. SEE NDOT STANDARD DETAIL B-30.1.4 FOR EXPANSION JOINT AND WATER STOP DETAILS



RAMP NO. 1 - INTERIOR ELEVATION
SCALE: 3/16" = 1'-0"



TYPICAL CIP WALL FOOTING STEP - DETAIL
SEE WALL ELEVATIONS FOR LOCATIONS
SCALE: 3/4" = 1'-0"

	PREPARED BY CITY OF LAS VEGAS	DESIGNED BY: SR DRAWN BY: AG CHECKED BY: AP	NO. DATE
	PREPARED FOR CITY OF LAS VEGAS	BID# 17.48938 DATE: JANUARY 2018 SUBMITTAL STAGE: 100% FINAL	REVISIONS
PREPARED BY DEPARTMENT OF PUBLIC WORKS CAPITAL PROJECT MGMT			
PREPARED BY CITY OF LAS VEGAS		POGGEMEYER DESIGN GROUP 6880 Smoke Ranch Road - Suite 110 Las Vegas, Nevada 89121 - (702) 255-8100	
TITLE CIMARRON PEDESTRIAN BRIDGE AT SUMMERLIN PARKWAY		SHEET PLAN AND ELEVATION RAMP NO. 1 INTERIOR WALL	
SHEET BRS-706		50 OF 86 DRAWING NO. 676-22	
FEDERAL PROJECT NUMBER: CM-0003(180)			

1/8/18 G:\14078 CIMARRON PEDESTRIAN BRIDGE\H48938\SHEET SET\DWG\H48938-07-807.DWG