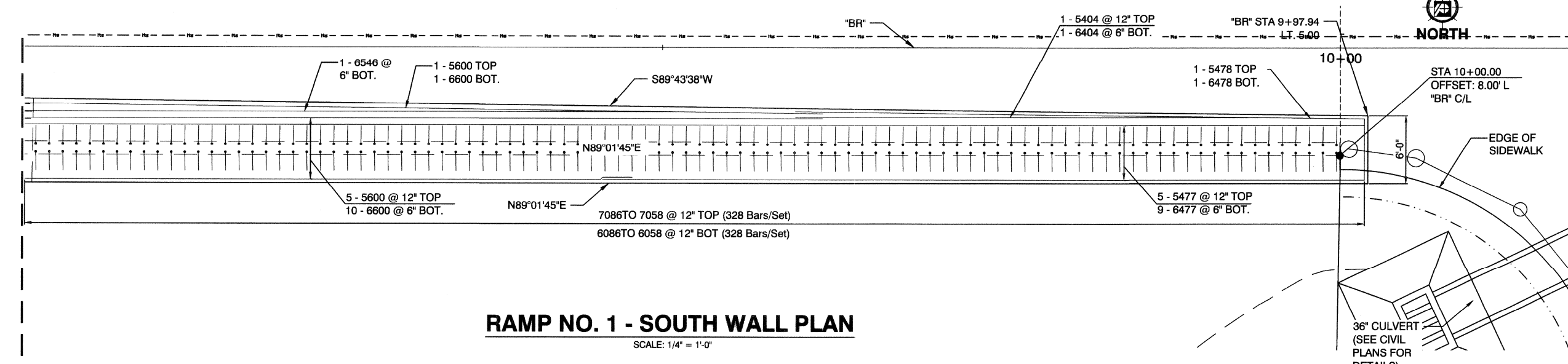


1/8/18 C:\14078 CIMARRON PEDESTRIAN BRIDGE\H48938\SHEET SET\DWG\H48938-07-507.DWG

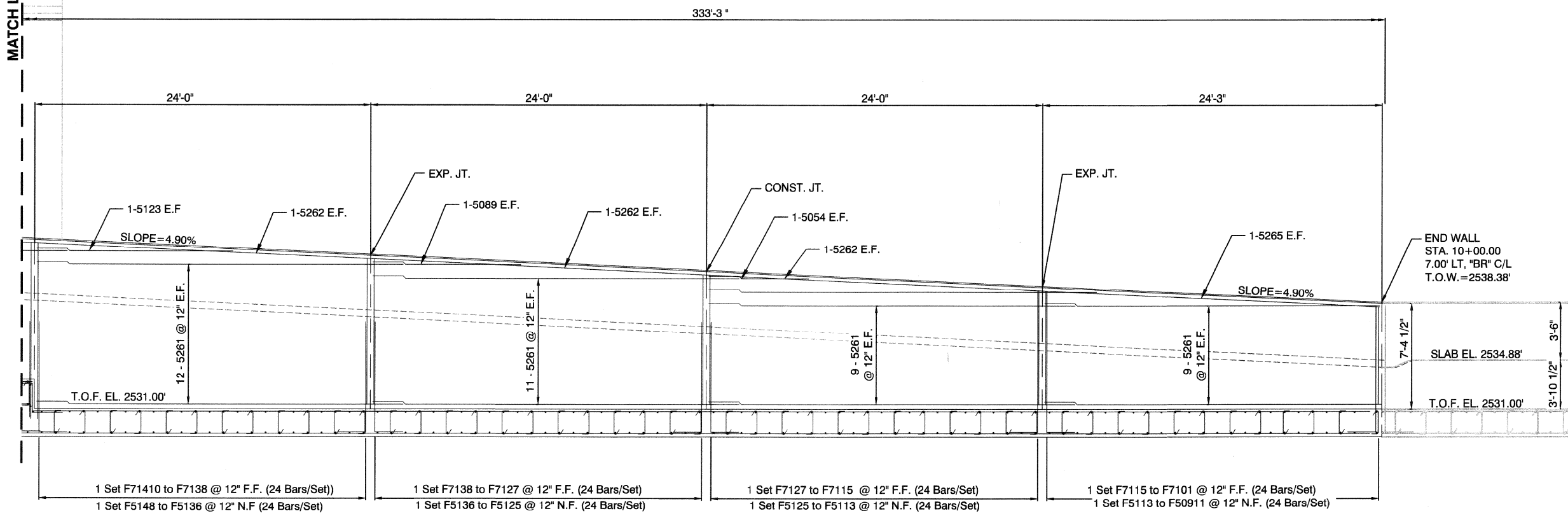


RAMP NO. 1 - SOUTH WALL PLAN

SCALE: 1/4" = 1'-0"

NOTES:

1. SEE SHEET BRS-714 FOR WEEP HOLE DETAILS.
2. SEE AESTHETIC DRAWINGS FOR AESTHETIC TREATMENTS.
3. SEE ELECTRICAL DRAWINGS FOR CONDUIT PLACEMENT / DETAILS.
4. SEE NDOT STANDARD DETAIL B-30.1.4 FOR EXPANSION JOINT AND WATERSTOP DETAILS.



RAMP NO. 1 - SOUTH WALL ELEVATION

SCALE: 1/4" = 1'-0"

* FENCE NOT SHOWN FOR CLARITY

 PREPARED FOR CITY OF LAS VEGAS DEPARTMENT OF PUBLIC WORKS CAPITAL PROJECT MGMT	 POGEMEYER DESIGN GROUP <small>6960 Smoke Ranch Road - Suite 110 Las Vegas, Nevada 89128 - (702) 255-8100</small>	NO. DATE REVISIONS	
H# 48938 DATE: JANUARY 2018 SUBMITTAL STAGE: 100% FINAL	BID# 17-48938 DESIGNED BY: SR DRAWN BY: AG CHECKED BY: AP		
CIMARRON PEDESTRIAN BRIDGE AT SUMMERLIN PARKWAY		PLAN AND ELEVATION RAMP NO. 1 SOUTH WALL	
SHEET BRS-703 47 OF 86 DRAWING NO. 676-22			
FEDERAL PROJECT NUMBER: CM-0003(180)			