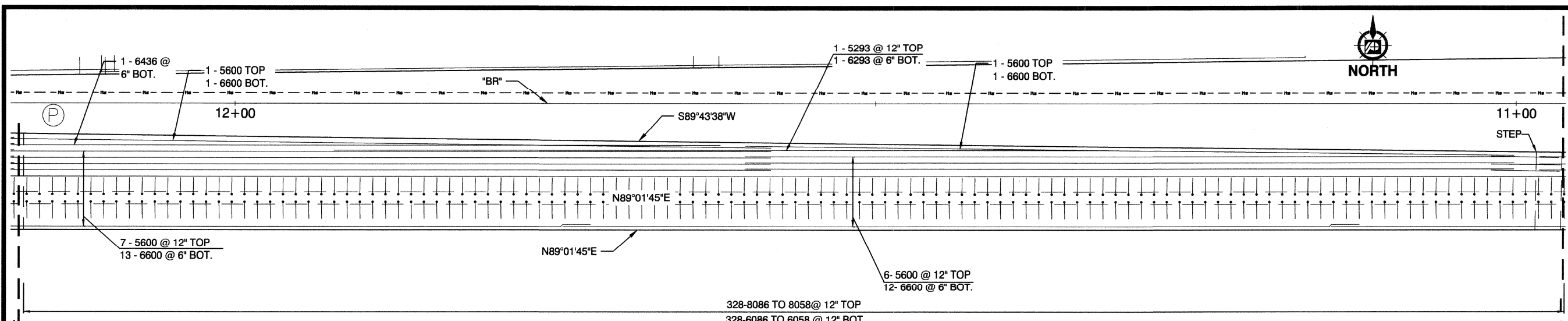


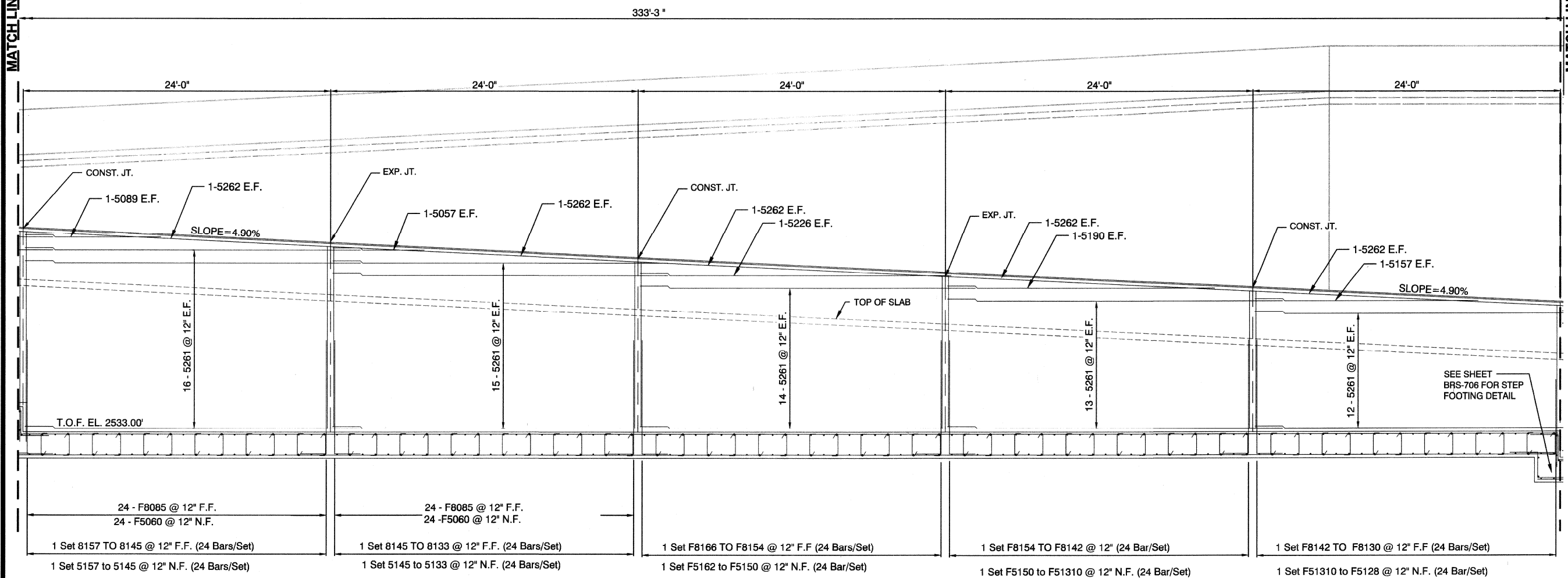
1/2/18 C:\14078 CIMARRON PEDESTRIAN BRIDGE\H48938\SHEET SET\DWG\H48938-07-S07.DWG



- NOTES:**
1. SEE SHEET BRS-714 FOR WEEPHOLE DETAILS
 2. SEE AESTHETIC DRAWINGS FOR AESTHETIC TREATMENTS.
 3. SEE ELECTRICAL DRAWINGS FOR CONDUIT PLACEMENT / DETAILS.
 4. SEE NDOT STANDARD DETAIL B-30.1.4 FOR EXPANSION JOINT AND WATERSTOP DETAILS.

RAMP NO. 1 - SOUTH WALL PLAN

SCALE: 1/4" = 1'-0"



RAMP NO. 1 - SOUTH WALL ELEVATION

SCALE: 1/4" = 1'-0"

* FENCE NOT SHOWN FOR CLARITY

		PREPARED BY DEPARTMENT OF PUBLIC WORKS CAPITAL PROJECT MGMT	
CITY OF LAS VEGAS H# 48938		BID# 17-48938 DESIGNED BY: SR DRAWN BY: AG CHECKED BY: AP	
DATE: JANUARY 2018 SUBMITTAL STAGE: 100% FINAL		PREPARED FOR CITY OF LAS VEGAS	
TITLE CIMARRON PEDESTRIAN BRIDGE AT SUMMERLIN PARKWAY		SHEET BRS-702	
SHEET 46 OF 86		DRAWING NO. 676-22	
FEDERAL PROJECT NUMBER: CM-0003(180)		REVISIONS NO. DATE	