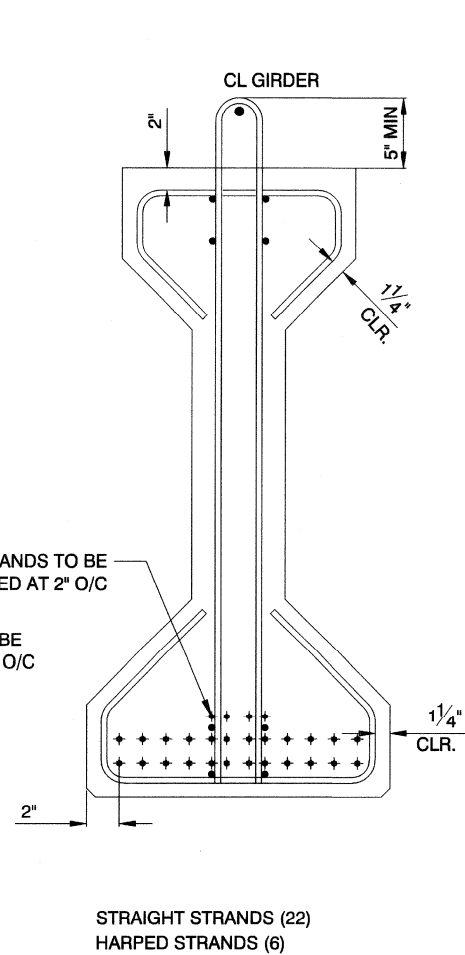
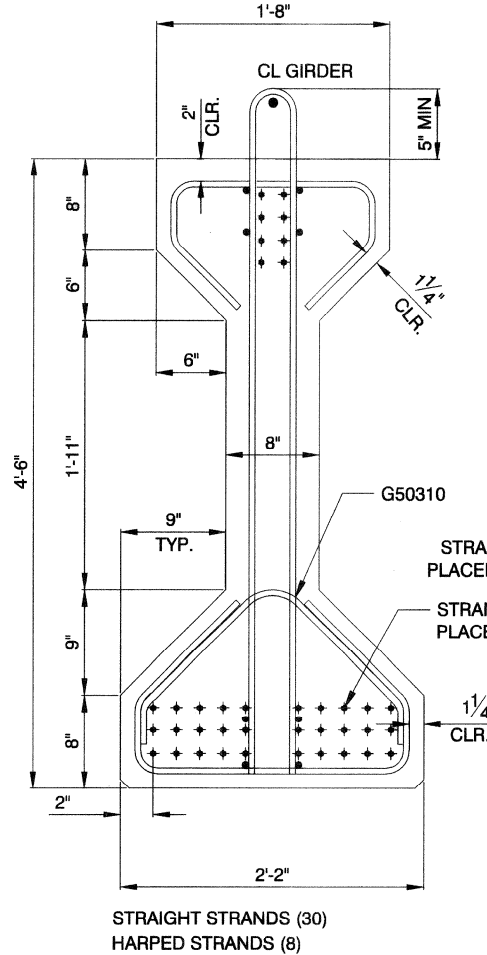


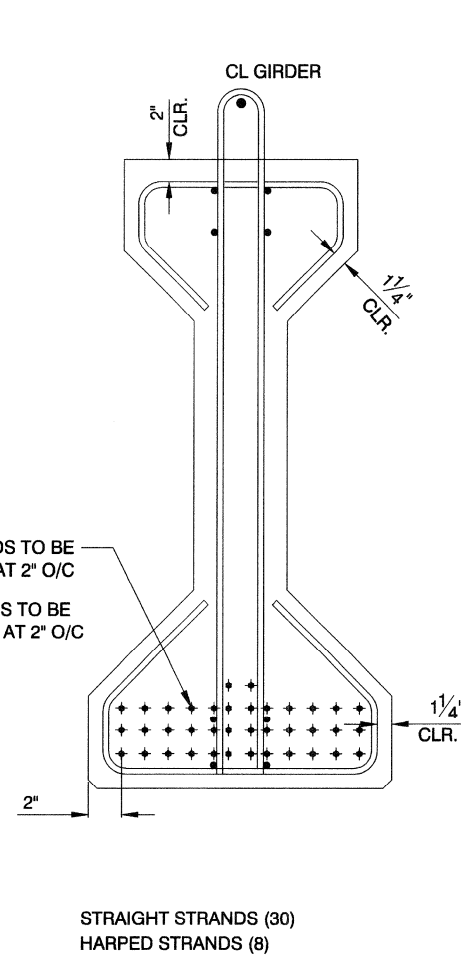
**SPAN 1 STRAND LAYOUT  
END SPAN**



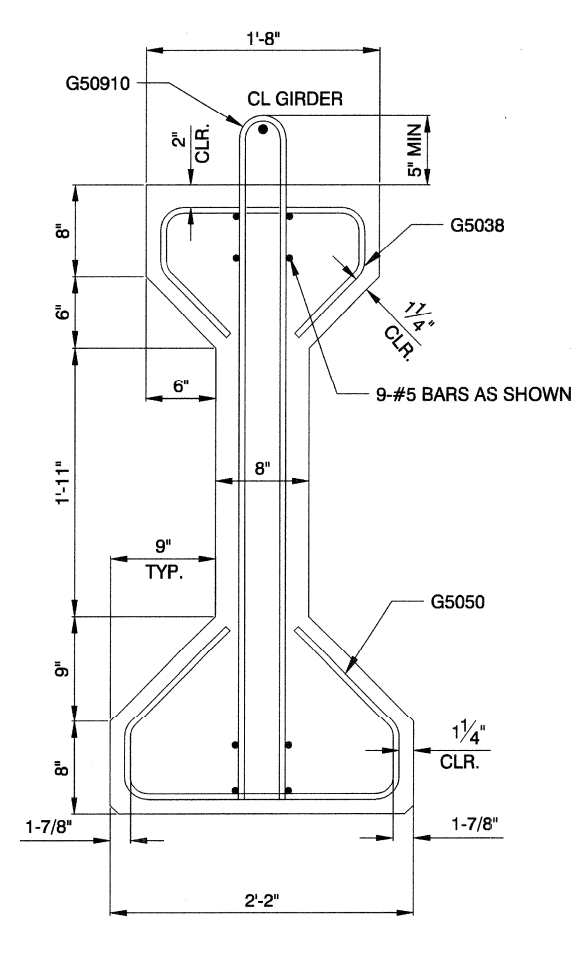
**SPAN 1 STRAND LAYOUT  
MID SPAN**



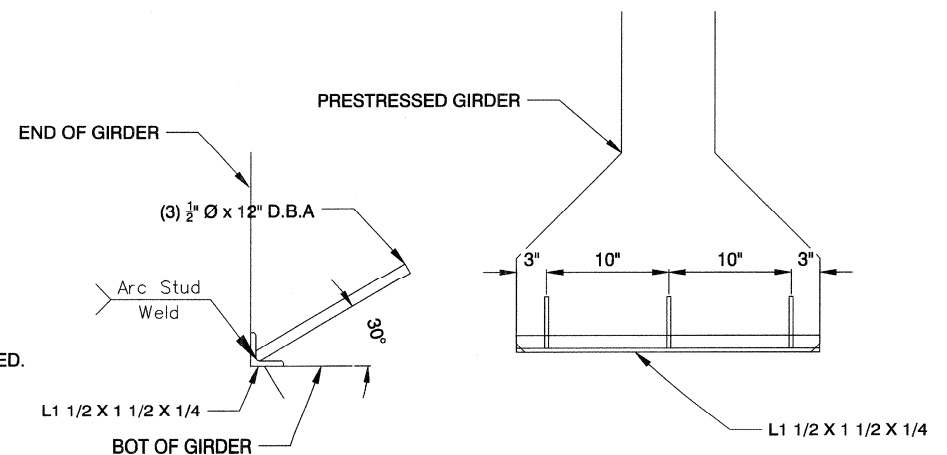
**SPAN 2 STRAND LAYOUT  
END SPAN**



**SPAN 2 STRAND LAYOUT  
MID SPAN**



**GIRDER REBAR LAYOUT**



**DETAIL A**

**PRE-STRESSING NOTES:**

1. INCREASE PLAN LENGTH AS NECESSARY TO COMPENSATE FOR SHORTENING DUE TO PRESTRESS, CREEP, AND SHRINKAGE.
2. USE 0.6  $\phi$  RELAXATION STRANDS (AASHTO M203 GRADE 270).
3. DESIGN OF LIFTING LOOPS PER PRECAST GIRDER FABRICATOR.
4. PRESTRESSED FORCE SHOWN IN THE TABLE (BRS-504 & BRS-506) IS FOR THE CONTROLLING GIRDER, AND INCLUDES ELASTIC GAINS AT SERVICE III LIMIT STATE.
5. CAMBER VALUES SHOWN IN THE TABLE (BRS-504 & BRS-506) ARE TAKEN AT MIDSPAN AND ARE FOR THE CONTROLLING GIRDER FOR THE SERVICE III LIMIT STATE.
6. BRACE GIRDERS TO PREVENT TIPPING AND CONTROL LATERAL BENDING DURING SHIPPING. BRACE GIRDERS Laterally TO PREVENT TIPPING UNTIL THE DIAPHRAGMS ARE INSTALLED.
7. SEE SHEETS (BRS-504 & BRS-506) FOR INTERMEDIATE DIAPHRAGM LOCATIONS AND SEE INTERMEDIATE DIAPHRAGM DETAILS FOR CONNECTION REQUIREMENTS.
8. NOTIFY THE ENGINEER IF ACTUAL CAMBER VARIES FROM THEORETICAL CAMBER BY MORE THAN 1".
9. ALL DIMENSIONS ARE HORIZONTAL. FABRICATOR MUST CORRECT FOR VERTICAL GRADE.
10. ALL REINFORCING STEEL TO BE ASTM A615 GRADE 60.
11. GALVANIZE EMBEDDED END ANGLE AS SHOWN IN DETAIL A IN ACCORDANCE WITH ASTM A153.

PREPARED BY <b>DEPARTMENT OF PUBLIC WORKS</b> CAPITAL PROJECT MGMT		PREPARED FOR <b>CITY OF LAS VEGAS</b>	
BID# 17-48938 DATE: JANUARY 2018 SUBMITTAL STAGE: 100% FINAL		DESIGNED BY: SRR DRAWN BY: AP CHECKED BY: AP	
PREPARED FOR <b>CIMARRON PEDESTRIAN BRIDGE AT SUMMERLIN PARKWAY</b>		TITLE <b>PRESTRESSING DETAILS</b>	
SHEET <b>BRS-505</b>		SHEET <b>37 OF 86</b>	
DRAWING NO. <b>676-22</b>		FEDERAL PROJECT NUMBER: CM-0003(180)	