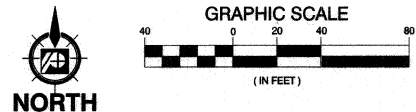
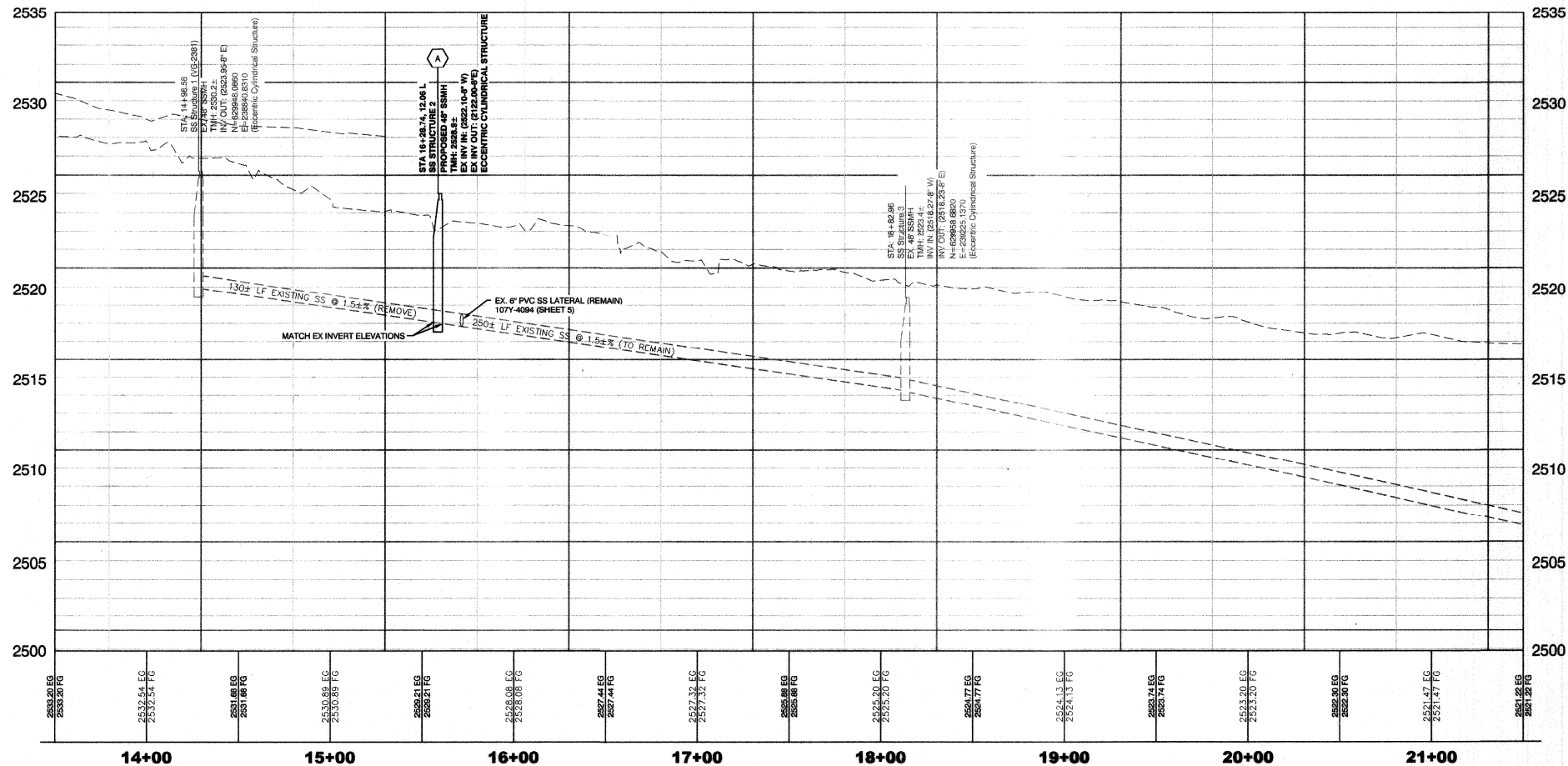
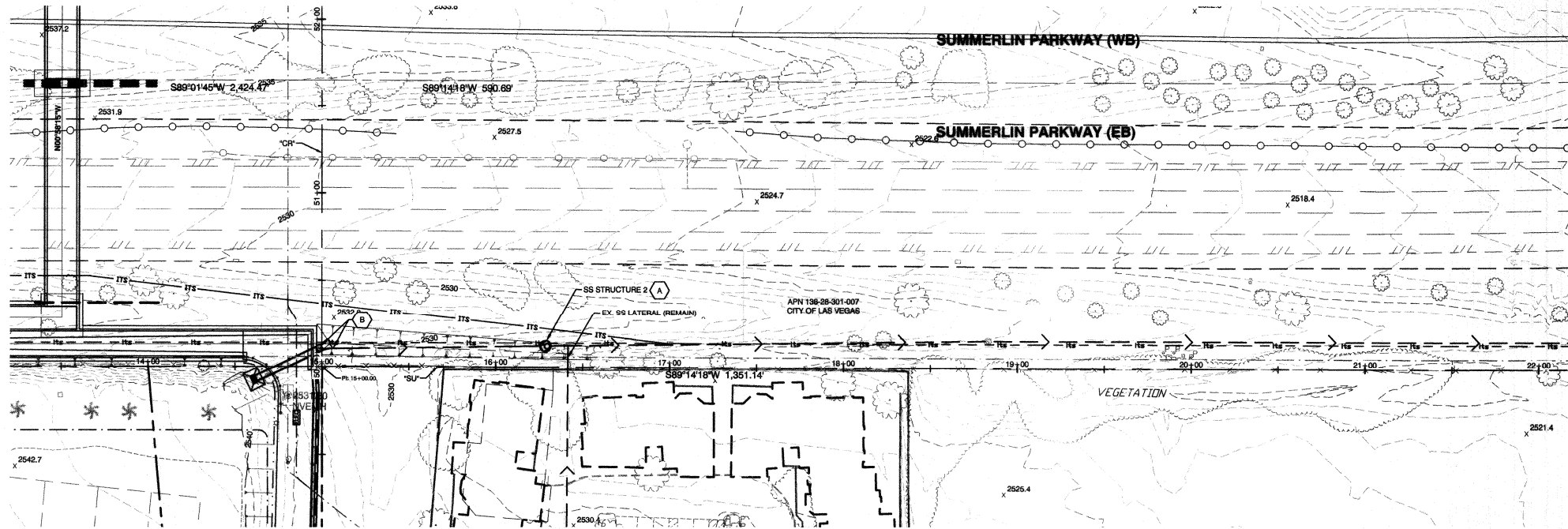


12/27/17 G:\14078 CIMARRON PEDESTRIAN BRIDGE\H46830\SHEET SET\DWG\H46830-07-SS00.DWG



CALL BEFORE CONSTRUCTION		
BEFORE YOU DIG	USA NORTH	811 OR 800-227-2600
	F.A.S.T.	702-432-5300
BEFORE YOU UNDERGROUND	CLARK COUNTY TRAFFIC OPERATIONS	702-455-7511
	CITY OF LAS VEGAS T.E.F.D.	702-229-5611
BEFORE YOU OVERHEAD	NV ENERGY	702-227-2929

- SEWER NOTES**
- A CONSTRUCT 48-INCH SANITARY SEWER MANHOLE IN ACCORDANCE PER DCSWCS STANDARD DRAWING SD-1. SET SEWER MANHOLE RIM 18-INCHES ABOVE FINISH GRADE AND CONSTRUCT CONCRETE COLLAR PER DETAIL 4 ON SHEET TY-01.
 - B REMOVE & DISPOSE OF EXISTING 48" SSMH (VG-2381) AND 130 LF EXISTING SS

 PREPARED BY CITY OF LAS VEGAS DEPARTMENT OF PUBLIC WORKS CAPITAL PROJECT MGMT	DESIGNED BY: SR DRAWN BY: AG CHECKED BY: AP	DATE: JANUARY 2018 SUBMITTAL STAGE: 100% FINAL	NO. DATE REVISIONS
CIMARRON PEDESTRIAN BRIDGE AT SUMMERLIN PARKWAY		SANITARY SEWER PLAN & PROFILE	
TITLE SHEET		ADAM P. PILARZ Eng. 12-31-19 No. 21404 CIVIL	
SHEET SS-01 19 OF 86		DRAWING NO. 676-22	

FEDERAL PROJECT NUMBER: CM-0003(18)