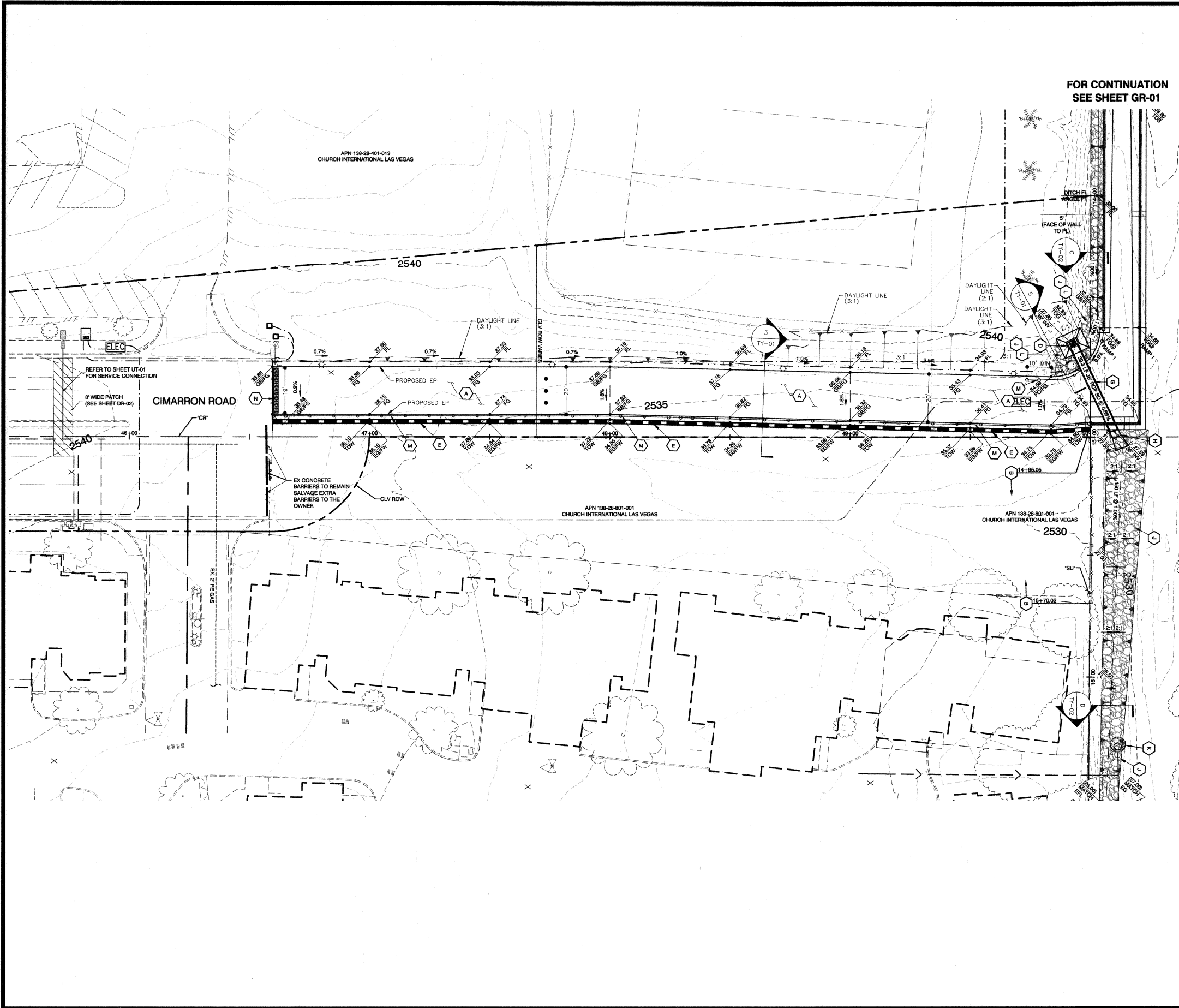


12/27/17 G:\14078 CIMARRON PEDESTRIAN BRIDGE\148938\SHEET SET\DWG\148938-04-GR00.DWG



FOR CONTINUATION  
SEE SHEET GR-01



CALL BEFORE CONSTRUCTION		
BEFORE YOU DIG	USA NORTH	811 OR 800-227-2800
BEFORE YOU UNDERGROUND	F.A.S.T.	702-432-5300
	CLARK COUNTY TRAFFIC OPERATIONS	702-455-7511
	CITY OF LAS VEGAS T.E.F.O.	702-229-6611
BEFORE YOU OVERHEAD	NV ENERGY	702-227-2929

**CONSTRUCTION NOTES**

- A CONSTRUCT AC PAVING (SEE SHEET TY-01, DETAIL 1 - TRAIL)
- B INSTALL 6-FOOT HIGH CHAIN LINK FENCE PER STD DWG #282. ENSURE FULL ENCLOSURE BETWEEN EXISTING TRAIL WALL AND PROPOSED RAMP RAIL. ENSURE FENCE IS NOT INSTALLED OVER UTILITY BOXES
- C INSTALL FLARED GUARD RAIL PER NDOT STANDARD PLAN R-8.1.1
- D CONSTRUCT TYPE 2A DROP INLET WITH 9" CONCRETE APRON PER NDOT STANDARD PLAN R-4.2.1.1 & R-4.2.7
- E CONSTRUCT SEGMENTAL BLOCK RETAINING WALL (SEE SHEET TY-01, DETAILS 2 & 3)
- F INSTALL 6 FOOT HIGH 9 FOOT WIDE SINGLE CHAIN LINK GATE PER STD DWG #283. PROVIDE ANY REQUIRED FENCING NEEDED TO ENSURE FULL ENCLOSURE BETWEEN EXISTING FENCE AND PROPOSED RAMP RAIL
- G INSTALL 36 INCH RCP SD PER STD DWG #505 (SHAPED GRANULAR FOUNDATION). SEE DETAIL 8 ON SHEET TY-01 FOR PLAN AND PROFILE
- H INSTALL 36 INCH END SECTION PER NDOT STANDARD PLAN R-2.3.1. GRADE SURFACE SURROUNDING END SECTION TO DRAIN
- I CONSTRUCT AC PAVING (SEE SHEET TY-01, DETAIL 1 - ROADWAY SECTION)
- J INSTALL D50=8" RIPRAP AT A DEPTH OF 18 INCHES. RIPRAP PAD DIMENSIONS PER PLAN
- K CONSTRUCT SANITARY SEWER MANHOLE (SEE SHEET SS-01)
- L GRADE PROPOSED SURFACE TO DRAIN TO INLET (1.00% MINIMUM)
- M INSTALL POST AND CABLE FENCE PER DETAIL 1 ON SHEET TY-03. ENSURE FULL ENCLOSURE BETWEEN EXISTING TRAIL WALL AND PROPOSED RAMP RAIL. ENSURE FENCE IS NOT INSTALLED OVER UTILITY BOXES.
- N INSTALL 2" WIDE TACTILE STRIP PER STD DWG #235.

 PREPARED BY <b>DEPARTMENT OF PUBLIC WORKS</b> CAPITAL PROJECT MGMT	 <b>POGEMEYER DESIGN GROUP</b> <small>6880 Smoke Ranch Road - Suite 110          Las Vegas, Nevada 89128 (702) 258-8100</small>	NO. DATE REVISIONS
<b>CITY OF LAS VEGAS</b> BID# 17-48938 DESIGNED BY: MAS DRAWN BY: MAS CHECKED BY: AP	PREPARED FOR <b>CITY OF LAS VEGAS</b> H# 48938 DATE: JANUARY 2018 SUBMITTAL STAGE: <b>100% FINAL</b>	TITLE <b>CIMARRON PEDESTRIAN BRIDGE AT SUMMERLIN PARKWAY</b> SHEET <b>GRADING PLAN CIMARRON ROAD</b>
	SHEET <b>GR-02</b> 15 OF 86 DRAWING NO. <b>676-22</b>	FEDERAL PROJECT NUMBER: CM-0003(180)