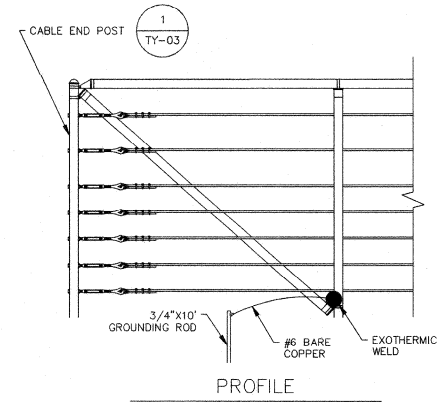


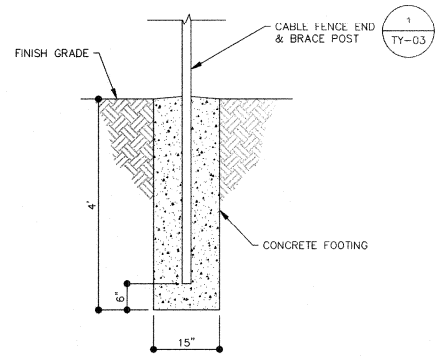
- NOTES:**
- BRACE POSTS SHALL BE PLACED A MAXIMUM OF 250' AND AT END POSTS.
 - MINIMUM CONCRETE COMPRESSIVE STRENGTH (28 DAYS): F'c=4,500 PSI.
 - ALL CONCRETE SHALL USE TYPE V CEMENT.
 - CONCRETE SLUMP SHALL BE 4" PLUS OR MINUS 1"; AND, WATER/CEMENT RATIO SHALL NOT EXCEED 0.45 (BY WEIGHT).
 - STEEL HSS ROUND MEMBERS SHALL BE ASTM A500, GRADE B (Fy=42,000 PSI).
 - POST/BRACE SHALL BE ASTM A53.
 - ROUND TYPE FOR FENCING SHALL CONFORM TO ASTM F 1083-16.
 - GALVANIZE BRACE BANDS SIZED FOR 1500 LBS (WORKING LOAD).
 - GALVANIZE COMPONENTS AFTER FABRICATION.
 - WELDING MUST BE PERFORMED BY WELDERS HOLDING VALID CERTIFICATES AND HAVING CURRENT EXPERIENCE IN THE TYPE OF WELD SHOWN IN THE DRAWINGS. ALL WELDING MUST USE E70 SERIES ELECTRODES UNLESS NOTED OTHERWISE.
 - ALL WELDING MUST CONFORM WITH THE LATEST AMERICAN WELDING SOCIETY STANDARDS. WELD SIZES NOT SPECIFIED ON THE DRAWINGS ARE TO BE 1/4" CONTINUOUS FILLETS MINIMUM.
 - WELDING E70 ELECTRODES.
 - WELD ALL NUTS AND TURNBUCKLE BOLTS.

1 POST AND CABLE FENCE
 TY-03 SCALE: N.T.S.

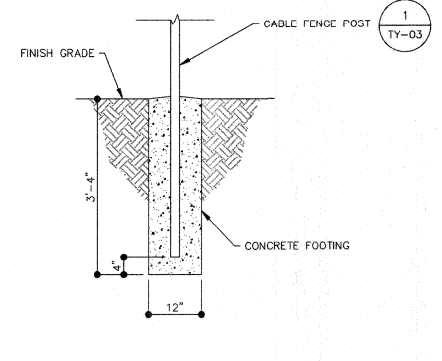


2 GROUNDING DETAIL POST AND CABLE FENCE
 TY-03 SCALE: N.T.S.

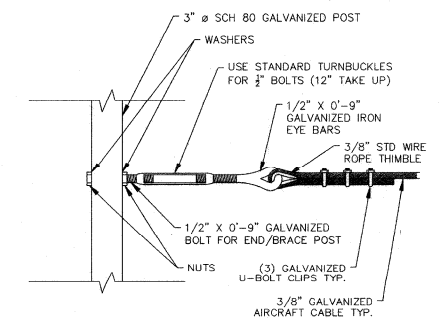
- NOTES:**
- ALL CONNECTIONS SHALL BE EXOTHERMIC WELDS.
 - ALL BONDING JUMPERS SHALL BE #6 STRANDED BARE COPPER.
 - GROUND POST AND CABLE FENCE FOR 138 KV PER NEC/NEC-1.
 - PROVIDE GROUND RODS AT END POSTS.



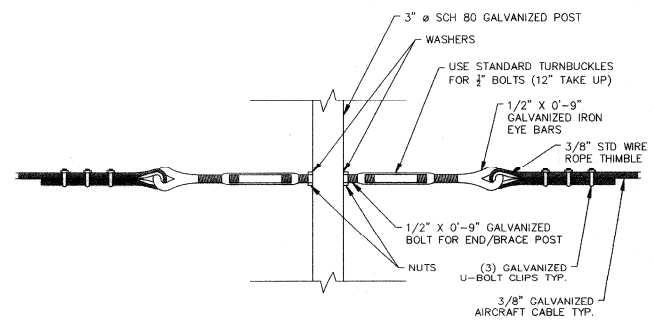
3 CONCRETE FOOTING FOR END AND BRACE POST
 TY-03 SCALE: N.T.S.



4 CONCRETE FOOTING
 TY-03 SCALE: N.T.S.



5 CABLE TO POST DETAIL 1
 TY-03 SCALE: N.T.S.



6 CABLE TO POST DETAIL 2
 TY-03 SCALE: N.T.S.

CALL BEFORE CONSTRUCTION		
BEFORE YOU DIG	USA NORTH	811 OR 800-227-2600
	F.A.S.T.	702-432-5300
BEFORE YOU UNDERGROUND	CLARK COUNTY TRAFFIC OPERATIONS	702-455-7511
	CITY OF LAS VEGAS T.E.F.O.	702-229-6611
BEFORE YOU OVERHEAD	NV ENERGY	702-227-2929

PREPARED BY
 DEPARTMENT OF PUBLIC WORKS
 CAPITAL PROJECT MGMT

DESIGNED BY: AB
 DRAWN BY: AB
 CHECKED BY: AP

DATE: JANUARY 2018
 SUBMITTAL STAGE: 100% FINAL

POGGEMEYER DESIGN GROUP
 800 S. GARDEN BLVD., SUITE 100
 LAS VEGAS, NEVADA 89102 - (702) 253-9100

TITLE SHEET
CIMARRON PEDESTRIAN BRIDGE AT SUMMERLIN PARKWAY
 TYPICAL SECTIONS / CIVIL DETAILS

PROFESSIONAL ENGINEER
 ADAM P. PILARZ
 Exp. 12-31-18
 CIVIL
 No. 21404

SHEET
TY-03
 13 OF 86
 DRAWING NO.
676-22

12/27/17 G:\14078 CIMARRON PEDESTRIAN BRIDGE\148888\148888\148888-03-TY00.DWG