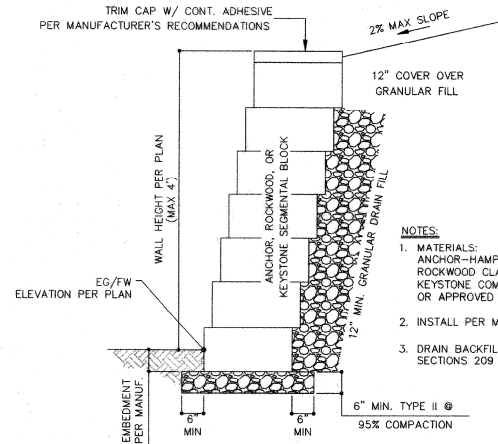


ASPHALT PAVEMENT SECTION		
TRAFFIC TYPE	ASPHALTIC CONCRETE (IN.)	TYPE II BASE (IN.)
ROADWAY	4.0 (MIN)	8.0 (MIN)
TRAIL	3.0	6.0

1 ASPHALT PAVEMENT SECTION

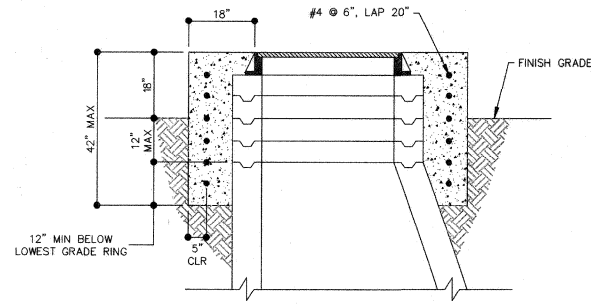
TY-01 SCALE: N.T.S.



- NOTES:**
1. MATERIALS: ANCHOR-HAMPTON STONE RETAINING WALL SYSTEM, ROCKWOOD CLASSIC 8 RETAINING WALL SYSTEM, KEYSTONE COMPAC RETAINING WALL SYSTEM OR APPROVED EQUAL, TAN COLOR PALATE
 2. INSTALL PER MANUFACTURER'S RECOMMENDATIONS.
 3. DRAIN BACKFILL PER UNIFORM STD SPECIFICATIONS SECTIONS 209 AND 704.03.02

2 SEGMENTAL BLOCK RETAINING WALL

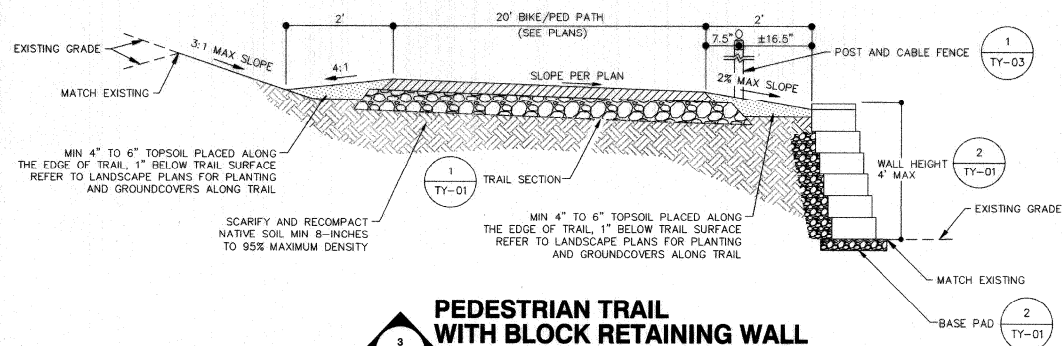
TY-01 SCALE: N.T.S.



- NOTES:**
1. CONCRETE SHALL BE TYPE V 4,500 PSI PER DCSWCS SECTION 4.11

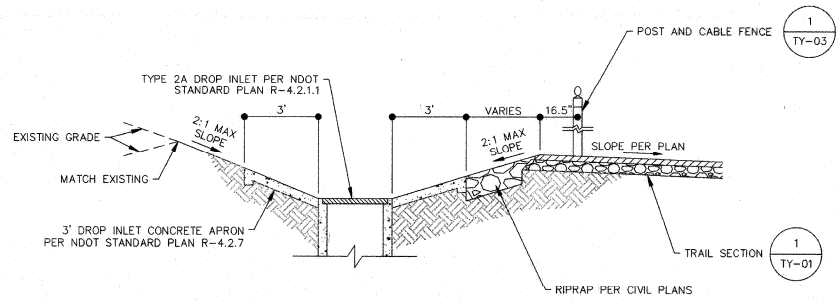
4 SANITARY SEWER MANHOLE CIRCULAR CONCRETE COLLAR

TY-01 SCALE: N.T.S.



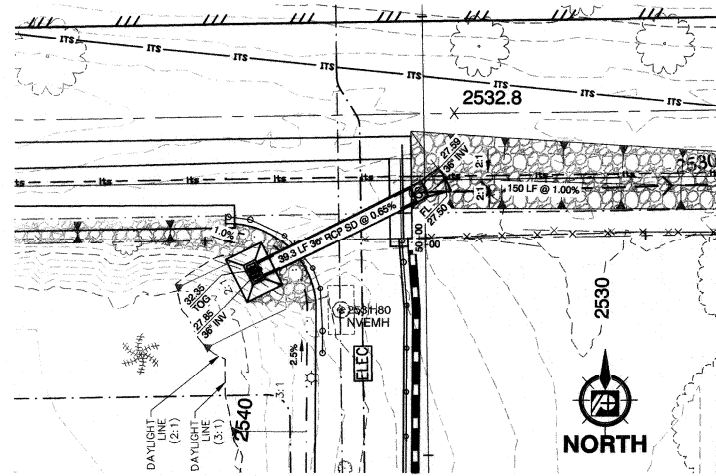
3 PEDESTRIAN TRAIL WITH BLOCK RETAINING WALL

TY-01 SCALE: N.T.S.



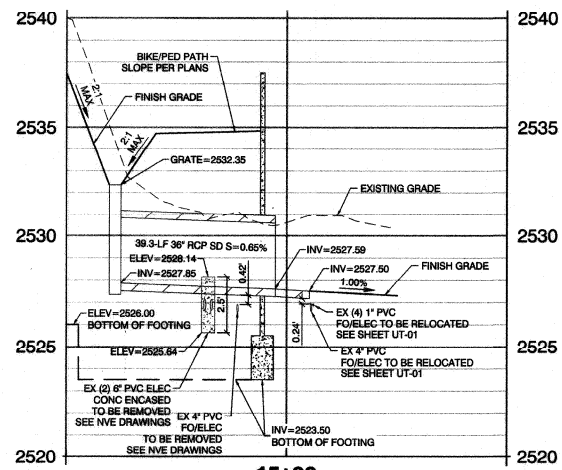
5 PEDESTRIAN TRAIL WITH DROP INLET

TY-01 SCALE: N.T.S.



PLAN VIEW

SCALE: 1"=20'



PROFILE VIEW

HORIZ 1"=20', VERT 1"=4'

6 36" RCP STORM DRAIN PLAN & PROFILE

TY-01 SCALE: N.T.S.

CALL BEFORE CONSTRUCTION

BEFORE YOU DIG	USA NORTH	811 OR 800-227-2600
BEFORE YOU UNDERGROUND	F.A.S.T.	702-432-4300
	CLARK COUNTY TRAFFIC OPERATIONS	702-455-7511
BEFORE YOU OVERHEAD	CITY OF LAS VEGAS T.E.F.O.	702-229-6611
	NV ENERGY	702-227-2829



PREPARED BY
DEPARTMENT OF PUBLIC WORKS
CAPITAL PROJECT MGMT



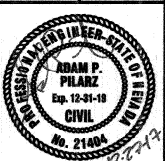
DESIGNED BY
POGMEIER DESIGN GROUP
1885 S. LAS VEGAS BLVD., SUITE 100
LAS VEGAS, NEVADA 89102 (702) 895-9100

DATE: JANUARY 20' 8
SUBMITTAL STAGE: 100% FINAL

DESIGNED BY: MAS
DRAWN BY: MAS
CHECKED BY: AP

TITLE
CIMARRON PEDESTRIAN BRIDGE AT SUMMERLIN PARKWAY

SHEET
TYPICAL SECTIONS / CIVIL DETAILS



SHEET
TY-01
11 OF 86