

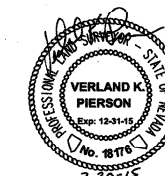
**RECORD OF SURVEY**  
OF A PORTION OF  
THE SOUTH HALF (S1/2) OF SECTION 28,  
TOWNSHIP 20 SOUTH, RANGE 60 EAST, M.D.M.,  
CITY OF LAS VEGAS, CLARK COUNTY, NEVADA

**SURVEYOR'S CERTIFICATE**

I, VERLAND K. PIERSON, A PROFESSIONAL LAND SURVEYOR LICENSED IN THE STATE OF NEVADA AS AN AGENT FOR POGGEMEYER DESIGN GROUP INC., CERTIFY THAT:

- THIS RECORD OF SURVEY REPRESENTS THE RESULTS OF A SURVEY CONDUCTED UNDER MY DIRECT SUPERVISION AT THE INSTANCE OF THE CITY OF LAS VEGAS.
- THE LANDS SURVEYED LIE WITHIN THE SOUTH HALF (S1/2) SECTION 28, TOWNSHIP 20 SOUTH, RANGE 60 EAST, M.D.M., CITY OF LAS VEGAS, CLARK COUNTY, NEVADA. THIS SURVEY WAS COMPLETED JULY 11, 2015.
- THIS RECORD OF SURVEY COMPLIES WITH THE APPLICABLE STATE STATUTES AND ANY LOCAL ORDINANCES IN EFFECT ON THE DATE THAT THE SURVEY WAS COMPLETED AND WAS PERFORMED IN ACCORDANCE WITH CHAPTER 625 OF THE NEVADA ADMINISTRATIVE CODE, STANDARDS OF PRACTICE FOR PROFESSIONAL LAND SURVEYORS.
- THE MONUMENTS DEPICTED ON THE RECORD OF SURVEY ARE OF THE CHARACTER SHOWN, OCCUPY THE POSITIONS INDICATED AND ARE OF SUFFICIENT NUMBER AND DURABILITY.
- THIS MAP IS NOT IN CONFLICT WITH THE PROVISION OF NRS 276.010 TO 278.630 INCLUSIVE.

VERLAND K. PIERSON  
PROFESSIONAL LAND SURVEYOR  
NEVADA LICENSE NO. 18176



**BASIS OF BEARING:**

GRID NORTH AS DEFINED BY THE CENTRAL MERIDIAN OF THE NEVADA COORDINATE REFERENCE SYSTEM, LAS VEGAS ZONE, NORTH AMERICAN DATUM OF 1983; SAID MERIDIAN BEING COINCIDENT WITH 114°58' WEST OF THE GREENWICH MERIDIAN. THE REFERENCE FRAME BEING NAD 83 (CORS 2011) EPOCH 2010.0.

LINEAR UNIT: US SURVEY FOOT

DATUM (REFERENCE FRAME): NAD 1983 (CORS 2011) EPOCH 2010.0

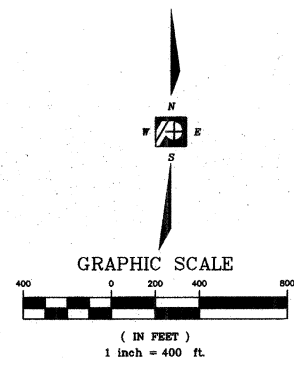
SYSTEM: NEVADA COORDINATE REFERENCE SYSTEM (NCRS)

ZONE: LAS VEGAS

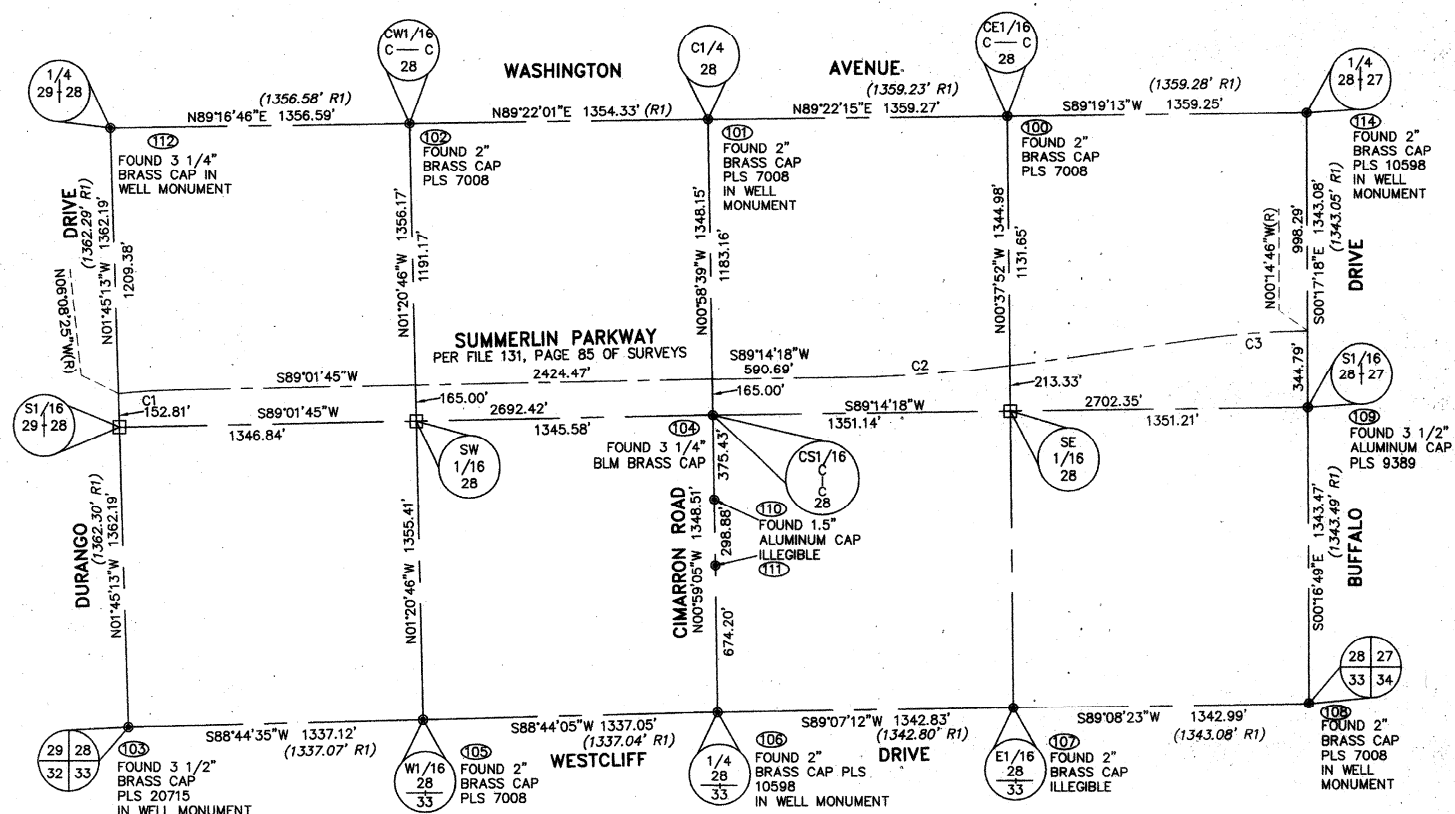
PROJECTION: TRANSVERSE MERCATOR  
STANDARD PARALLEL (AND LATITUDE OF GRID ORIGIN): 36°15'00"N  
LONGITUDE OF CENTRAL MERIDIAN: 114°58'00"W  
NORTHING AT GRID ORIGIN: 200,000.00 M (656,166.6667 FT US)  
EASTING AT CENTRAL MERIDIAN: 100,000.00 M (328,083.3333 FT US)  
SCALE FACTOR ON CENTRAL MERIDIAN: 1.0001 (EXACT)

**NOTES:**

- ALL DISTANCES AND BEARINGS SHOWN HEREON ARE PROJECTED (GRID) VALUES BASED ON THE PRECEDING PROJECTION DEFINITION. THE PROJECTION WAS DEFINED SUCH THAT PROJECTED (GRID) DISTANCES ARE EQUIVALENT TO "GROUND DISTANCES" IN THE PROJECT AREA.
- GRID BEARINGS SHOWN HEREON (OR IMPLIED BY GRID COORDINATES) DO NOT EQUAL GEODETIC BEARINGS DUE TO MERIDIAN CONVERGENCE.



POINT#	NORTHING	EASTING
100	631300.78	240178.61
101	631285.86	238819.42
102	631270.89	237465.18
103	628530.73	236192.07
104	629937.90	238842.42
105	628560.07	237528.88
106	628589.59	238865.60
107	628610.21	240208.27
108	628630.37	241551.11
109	629973.82	241544.54
110	629562.52	238848.84
111	629263.68	238854.00
112	631253.83	236108.70
114	631316.89	241537.78



CURVE #	DELTA	RADIUS	LENGTH
C1	5°10'10"	3000.00'	270.67'
C2	6°52'40"	6000.00'	720.24'
C3	7°23'37"	3800.00'	490.35'

**LEGEND**

- SECTION LINE
- - - EASEMENT LINE
- FOUND MONUMENT AS NOTED
- CALCULATED POSITION NOTHING FOUND OR SET
- ⊙ COORDINATE TABLE NUMBER
- (1343.08' R1) RECORD MAP REFERENCE

**REFERENCE MAPS:**

- FILE 131, PAGE 85 OF SURVEYS
- FILE 190, PAGE 88 OF SURVEYS
- FILE 195, PAGE 30 OF SURVEYS

**H#48938**

**COUNTY RECORDER'S NOTE**

ANY SUBSEQUENT CHANGES TO THIS MAP SHOULD BE EXAMINED AND MAY BE DETERMINED BY REFERENCE TO THE COUNTY RECORDER'S CUMULATIVE MAP INDEX. N.R.S. 278.5695.

**SHEET 1 OF 1**

<b>RECORD OF SURVEY</b> OF A PORTION OF THE SOUTH HALF (S1/2) OF SECTION 28, TOWNSHIP 20 SOUTH, RANGE 60 EAST, M.D.M., CITY OF LAS VEGAS, CLARK COUNTY, NEVADA		No. <u>02621</u> FILED AT THE REQUEST OF POGGEMEYER DESIGN GROUP INC. DATE <u>7-30-15</u> AT <u>3:10 P.M.</u> FILE <u>196</u> PAGE <u>0014</u> OF SURVEYS OFFICIAL RECORDS BOOK No. <u>20150730</u> CLARK COUNTY NEVADA RECORDS DEBBIE CONWAY, RECORDER FEE \$ <u>24.00</u> DEPUTY <u>R.Y.U.</u>
6960 Smoke Ranch Suite 110 Las Vegas, Nevada 89128 p) 702.255.8100 f) 702.255.8375 www.poggemeyer.com	JOB NUMBER 14078 CHECKED BY: APilarz CAD DRAWING DRAWING DATE 7-20-15 DRAWN BY V.K.P.	