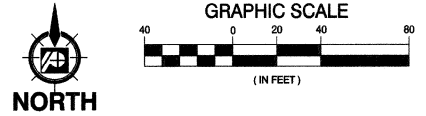
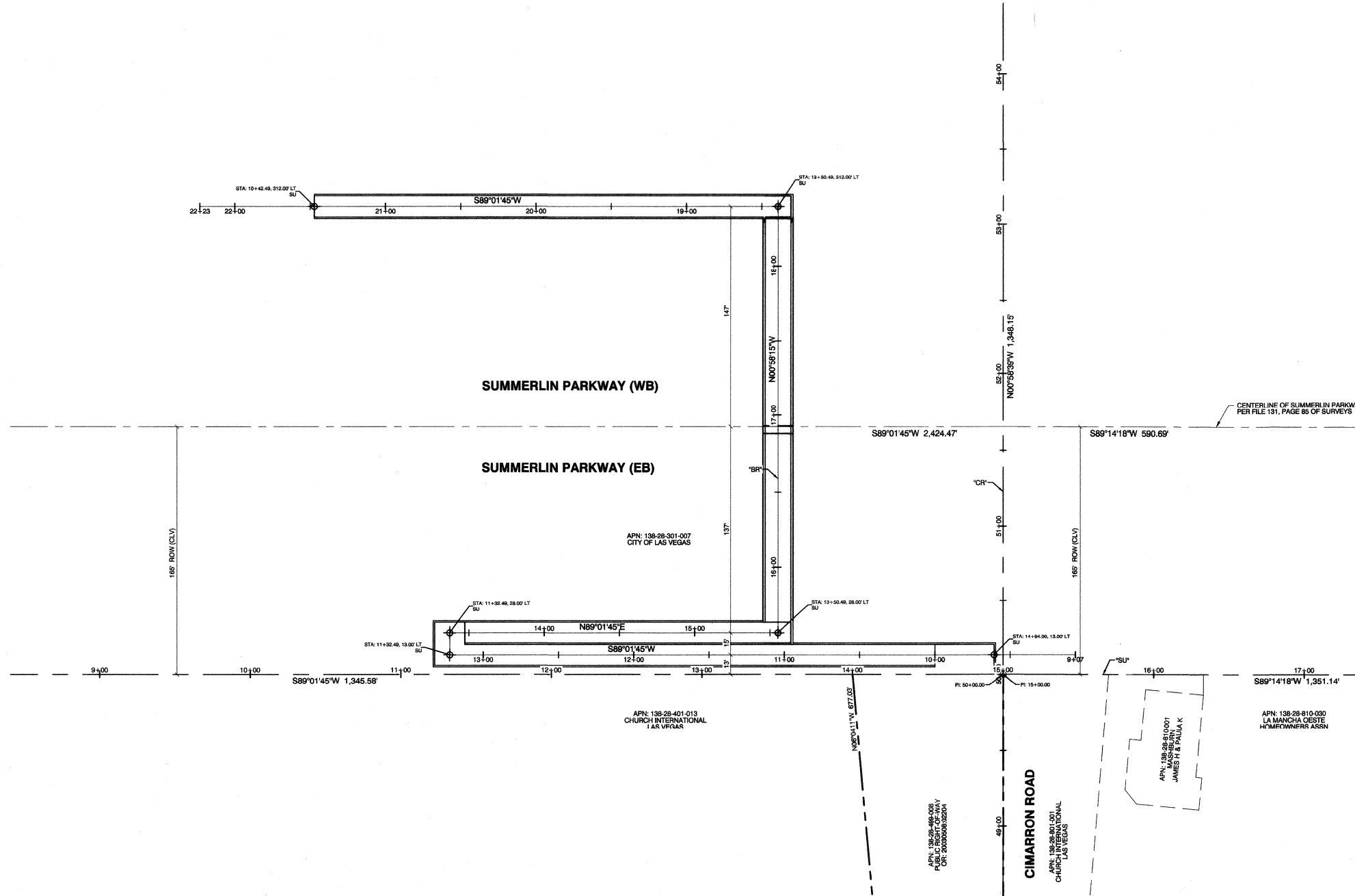


12/27/17 G:\14078 CIMARRON PEDESTRIAN BRIDGE\H48938\SHEET SET\DWG\H48938-01-SC00.DWG



**CALL BEFORE CONSTRUCTION**

BEFORE YOU DIG	USA NORTH	811 OR 800-227-2600
	F.A.S.T.	702-432-5300
BEFORE YOU UNDERGROUND	CLARK COUNTY TRAFFIC OPERATIONS	702-455-7511
	CITY OF LAS VEGAS T.E.F.O.	702-229-6611
BEFORE YOU OVERHEAD	NV ENERGY	702-227-2929

**RECORD OF SURVEY**

THE HORIZONTAL CONTROL INFORMATION SHOWN HEREON REFERENCES THE PROJECT RECORD OF SURVEY ON FILE WITH THE CLARK COUNTY RECORDERS OFFICE AS FILE 196 PAGE 14 OF SURVEYS. SAID RECORD OF SURVEY FOLLOWS AS SHEET ROS-1.

PREPARED BY <b>CITY OF LAS VEGAS</b>		PREPARED BY <b>DEPARTMENT OF PUBLIC WORKS CAPITAL PROJECT MGMT</b>	
DATE: JANUARY 2018	DESIGNED BY: VP	DRAWN BY: MAS	CHECKED BY: AP
SUBMITTAL STAGE: 100% FINAL	BID# 17-48938	NO.	DATE
<b>CIMARRON PEDESTRIAN BRIDGE AT SUMMERLIN PARKWAY</b>		<b>SURVEY CONTROL PLAN BRIDGE AND RAMPS</b>	
TITLE SHEET		REVISIONS	
		NO.   DATE	
SHEET <b>SC-03</b>		NO.   DATE	
7 OF 86		NO.   DATE	
DRAWING NO. <b>676-22</b>		NO.   DATE	

FEDERAL PROJECT NUMBER: OM-0003(100)