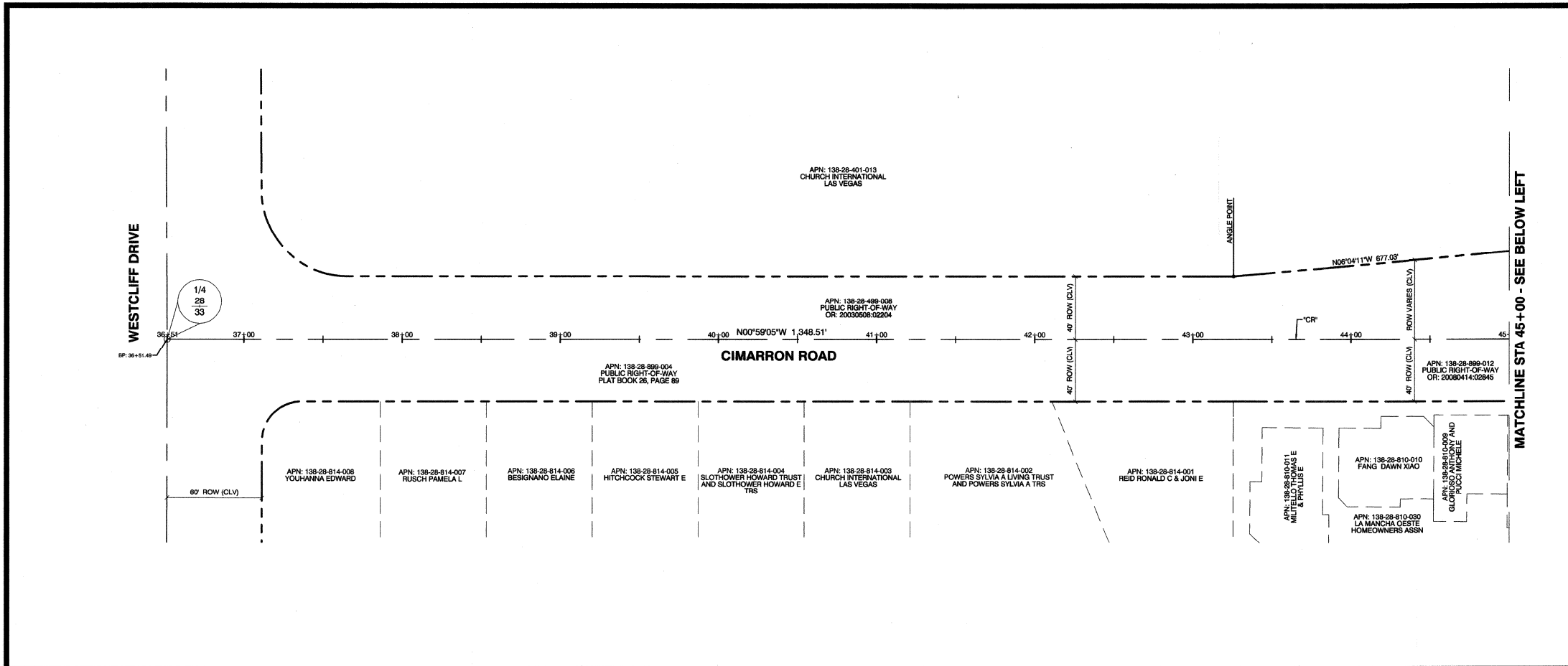


12/27/17 03:14078 CIMARRON PEDESTRIAN BRIDGE SET.DWG\H48938-01-SC00.DWG

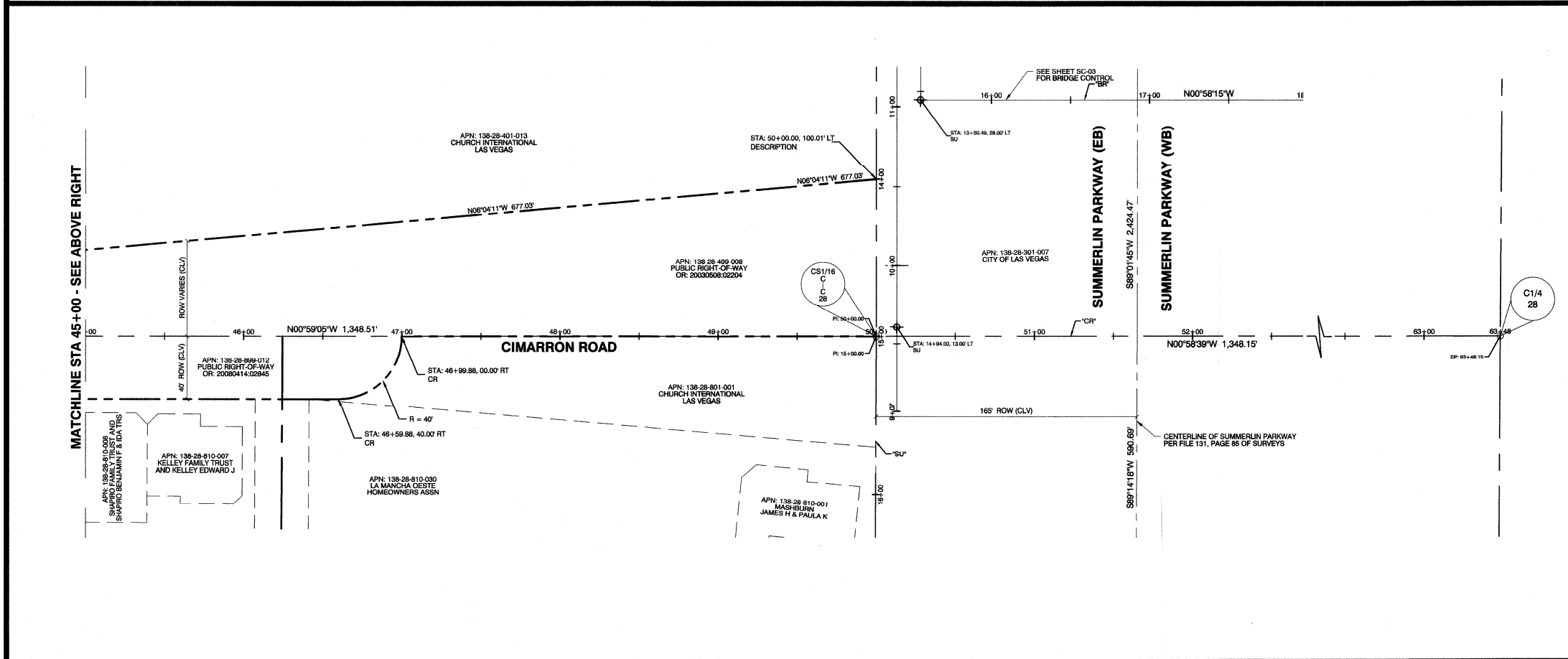


CALL BEFORE CONSTRUCTION

BEFORE YOU DIG	USA NORTH	811 OR 800-227-2600
	F.A.S.T.	702-432-6300
BEFORE YOU UNDERGROUND	CLARK COUNTY TRAFFIC OPERATIONS	702-455-7511
	CITY OF LAS VEGAS T.E.F.O.	702-229-6611
BEFORE YOU OVERHEAD	NV ENERGY	702-227-2929

RECORD OF SURVEY

THE HORIZONTAL CONTROL INFORMATION SHOWN HEREON REFERENCE THE PROJECT RECORD OF SURVEY ON FILE WITH THE CLARK COUNTY RECORDERS OFFICE AS FILE 198 PAGE 14 OF SURVEYS. SAID RECORD OF SURVEY FOLLOWS AS SHEET ROS-1.



PREPARED BY CITY OF LAS VEGAS		PREPARED BY POGEMEIER DESIGN GROUP	
PREPARED FOR CITY OF LAS VEGAS	BID # 17-48938	DESIGNED BY: VP	CHECKED BY: AP
DATE: JANUARY 2018	SUBMITTAL STAGE:	DRAWN BY: MAS	NO. DATE REVISIONS
H# 48938	100% FINAL		
CIMARRON PEDESTRIAN BRIDGE AT SUMMERLIN PARKWAY			
SURVEY CONTROL PLAN CIMARRON ROAD			
SHEET			
SHEET			
SC-02			
6 OF 86			
DRAWING NO.			
676-22			
FEDERAL PROJECT NUMBER: CM-U003(18U)			