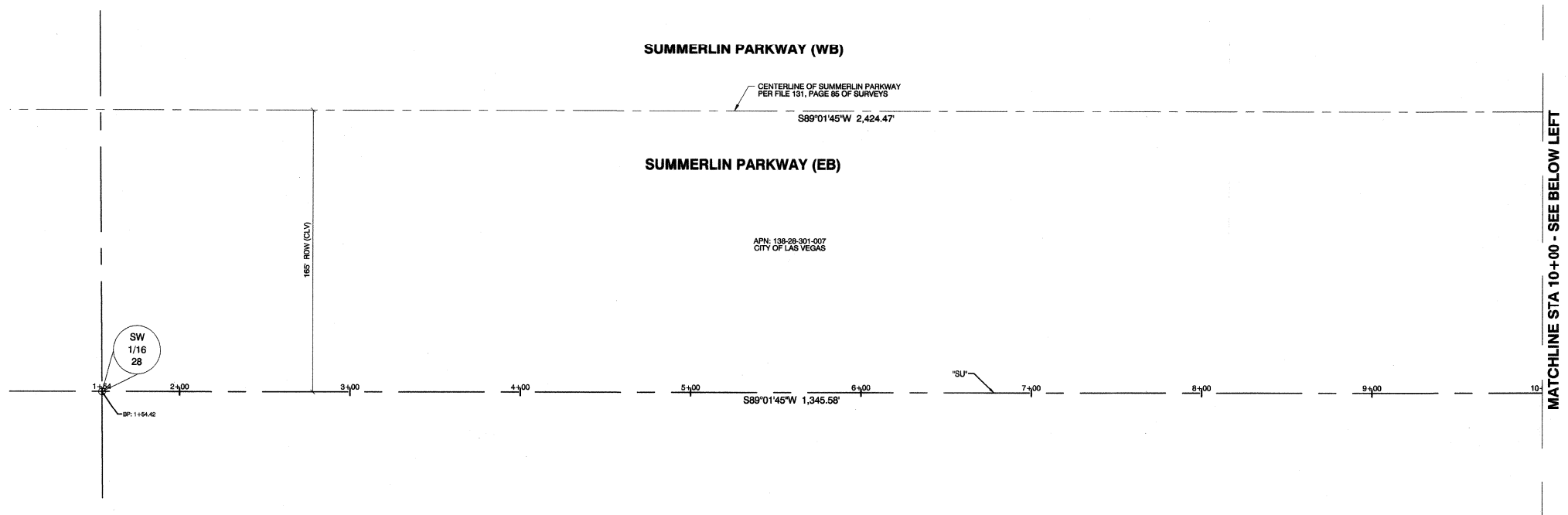
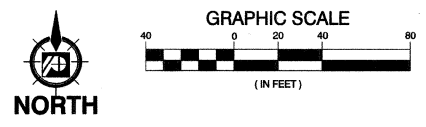


12/27/17 G:\14079 CIMARRON PEDESTRIAN BRIDGE\48838\SHEET SET\DWG\14-48838-01-SC00.DWG



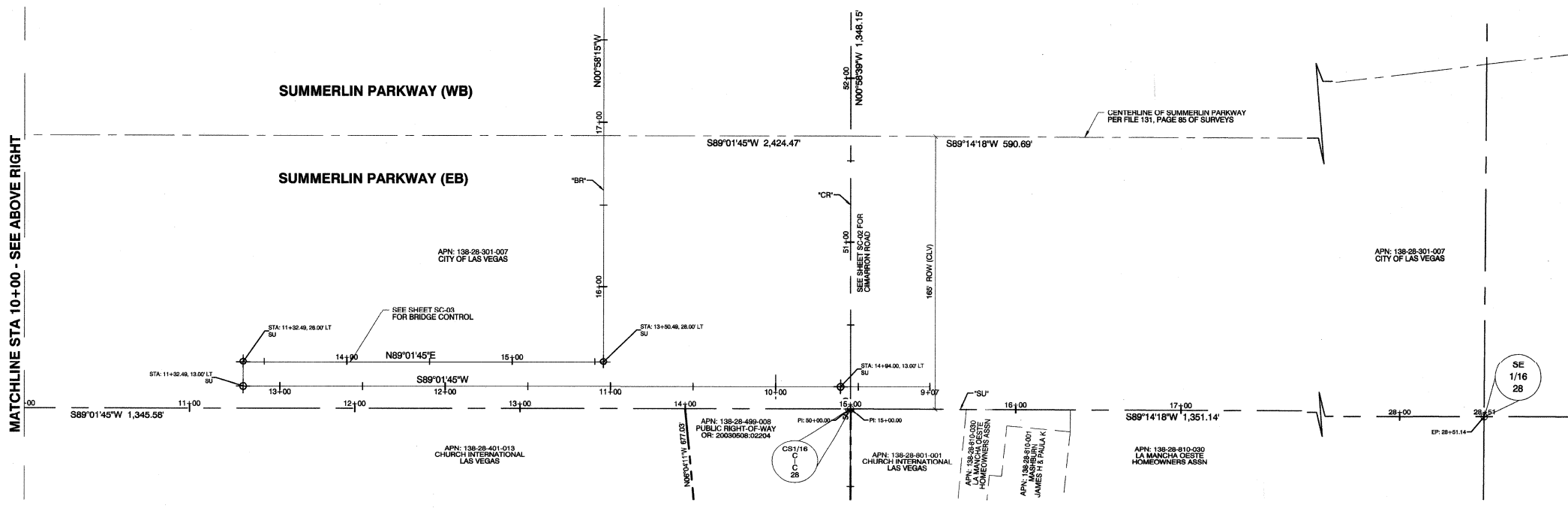
MATCHLINE STA 10+00 - SEE BELOW LEFT



CALL BEFORE CONSTRUCTION		
BEFORE YOU DIG	USA NORTH	811 OR 800-227-2600
BEFORE YOU UNDERGROUND	F.A.S.T.	702-432-5300
	CLARK COUNTY TRAFFIC OPERATIONS	702-455-7511
	CITY OF LAS VEGAS T.E.F.O.	702-229-6611
BEFORE YOU OVERHEAD	NV ENERGY	702-227-2929

RECORD OF SURVEY

THE HORIZONTAL CONTROL INFORMATION SHOWN HEREON REFERENCES THE PROJECT RECORD OF SURVEY ON FILE WITH THE CLARK COUNTY RECORDERS OFFICE AS FILE 196 PAGE 14 OF SURVEYS. SAID RECORD OF SURVEY FOLLOWS AS SHEET ROS-1.



MATCHLINE STA 10+00 - SEE ABOVE RIGHT

PREPARED BY CITY OF LAS VEGAS		DEPARTMENT OF PUBLIC WORKS CAPITAL PROJECT MGMT	
H# 48838	DATE: JANUARY 2018	BID# 17-48838	DESIGNED BY: VP
SUBMITTAL STAGE: 100% FINAL		DRAWN BY: MAS	CHECKED BY: AP
CIMARRON PEDESTRIAN BRIDGE AT SUMMERLIN PARKWAY			
SURVEY CONTROL PLAN SUMMERLIN PARKWAY			
SHEET SC-01 5 OF 86 DRAWING NO. 676-22			
FEDERAL PROJECT NUMBER: CM-0003(180)			