

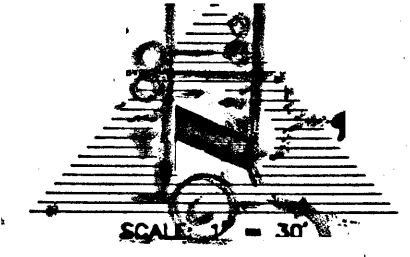
**AMENDED MAP OF
BOULDER HEIGHTS ADDITION, TRACT 1, BLOCK 'A' (96)**

A PORTION OF
THE SW 1/4 SW 1/4 SECTION 29
T. 20 S. R. 62 E. 4ND.M.
CITY OF LAS VEGAS
CLARK COUNTY, NEVADA

| LINE TABLE | | |
|------------|---------------|----------|
| LINE | DIRECTION | DISTANCE |
| L1 | N 81°28'21" E | 40.64' |
| L2 | N 81°28'21" E | 1.16' |
| L3 | N 14°48' E | 8.89' |
| L4 | N 02°34' E | 4.51' |
| L5 | N 14°48' E | 21.02' |

| CURVE TABLE | | | | |
|-------------|--------|--------|---------|-----------|
| CURVE | RADIUS | LENGTH | TANGENT | DELTA |
| C1 | 25.00' | 38.12' | 23.88' | 87°22'25" |
| C2 | 15.00' | 24.30' | 15.79' | 92°48'24" |
| C3 | 15.00' | 22.85' | 14.30' | 87°16'23" |
| C4 | 25.00' | 40.38' | 26.14' | 92°32'51" |

EXISTING MOBILE HOME PARK
(NOT A PART OF THIS SUBDIVISION)



HARRIS ST.

LAMB BLVD.

HUBBARD ST.

MALBERT AVE.

BOULDER HEIGHTS ADDITION
BK. 1, PG. 81
(NOT A PART OF THIS SUBDIVISION)



Ken W. Kraemer
10/1/92

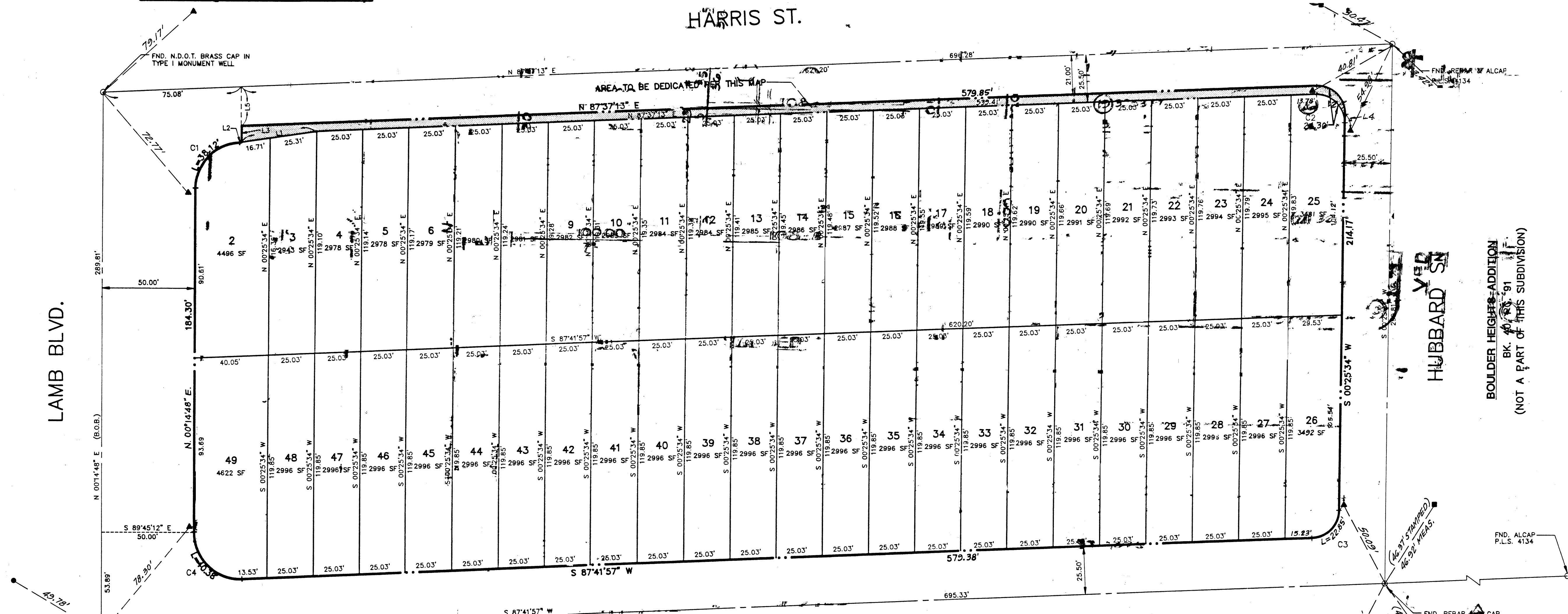
LEGEND

- ▲ SET B.C. TIE IN CURB PLS 7812
- FND. B.C. TIE IN CURB NO PLS NUMBER
- FND. B.C. TIE IN CURB PLS 4134

SURVEYORS CERTIFICATE

I, KEN W. KRAEMER, A DULY REGISTERED PROFESSIONAL LAND SURVEYOR IN THE STATE OF NEVADA, DO HEREBY CERTIFY THAT THE MONUMENTS HAVE BEEN SET AND THE TIE DISTANCES ESTABLISHED AS SHOWN HEREON. THIS SURVEY WAS COMPLETED ON OCT. 1, 1992.

MONUMENTATION TIE MAP



BOULDER HEIGHTS ADDITION
BK. 1, PG. 81
(NOT A PART OF THIS SUBDIVISION)