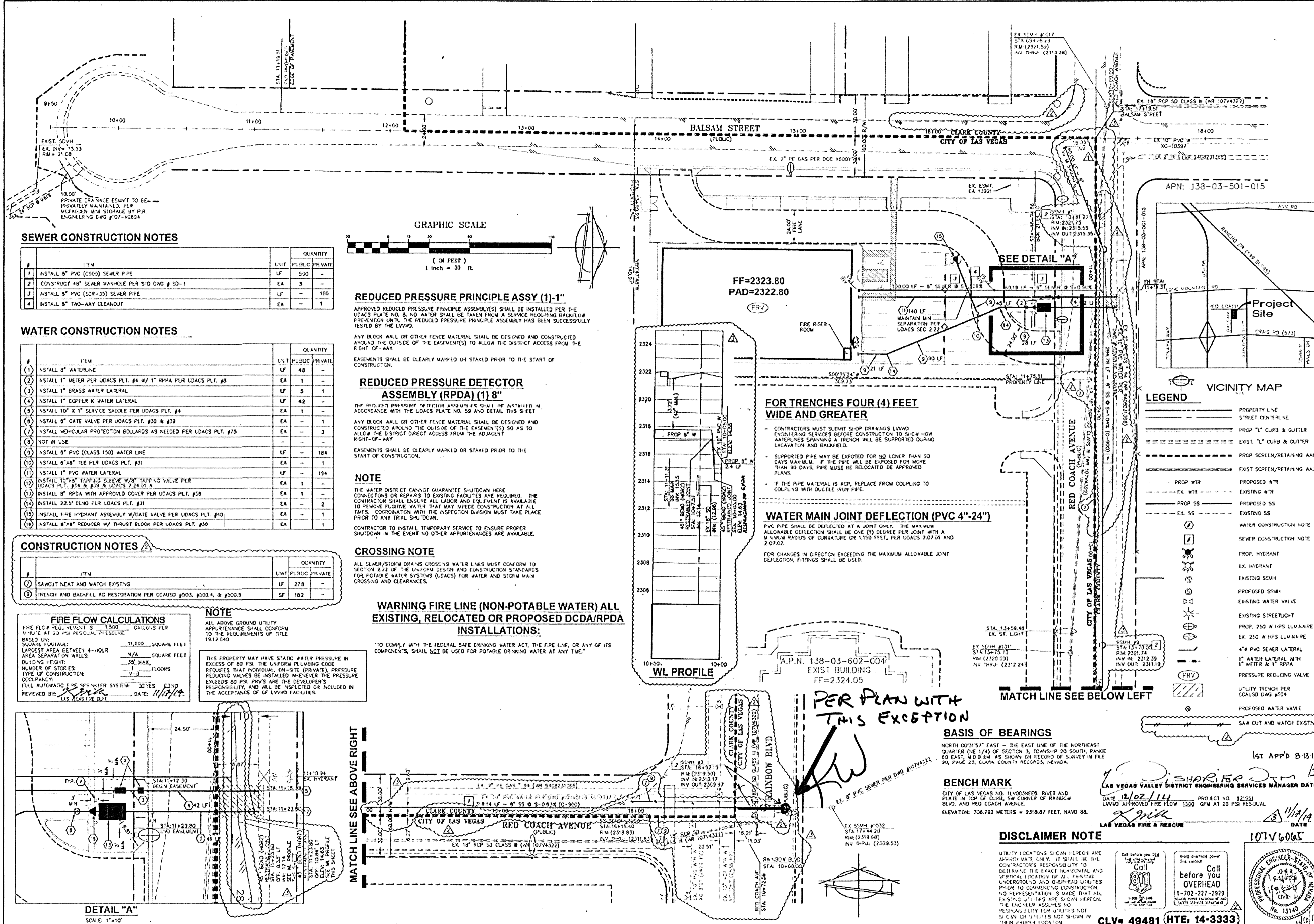


# CLV SEWER AS-BUILT



### SEWER CONSTRUCTION NOTES

#	ITEM	UNIT	PUBLIC	PRIVATE	QUANTITY
1	INSTALL 8" PVC (9000) SEWER PIPE	LF	500	-	-
2	CONSTRUCT 48" SEWER MANHOLE PER STD DWG # SD-1	EA	3	-	-
3	INSTALL 8" PVC (SDR-35) SEWER PIPE	LF	-	100	-
4	INSTALL 8" TWO-WAY CLEANOUT	EA	-	1	-

### WATER CONSTRUCTION NOTES

#	ITEM	UNIT	PUBLIC	PRIVATE	QUANTITY
1	INSTALL 8" WATERLINE	LF	40	-	-
2	INSTALL 1" METER PER UDACS PLT. #4 W/ 1" RPPA PER UDACS PLT. #9	EA	1	-	-
3	INSTALL 1" BRASS WATER LATERAL	LF	5	1	-
4	INSTALL 1" COPPER K WATER LATERAL	LF	42	-	-
5	INSTALL 10" X 1" SERVICE SADDLE PER UDACS PLT. #4	EA	1	-	-
6	INSTALL 8" GATE VALVE PER UDACS PLT. #30 & #39	EA	-	1	-
7	INSTALL VEHICULAR PROTECTION BOLLARDS AS NEEDED PER UDACS PLT. #75	EA	-	3	-
8	NOT IN USE	-	-	-	-
9	INSTALL 8" PVC (CLASS 150) WATER LINE	LF	-	104	-
10	INSTALL 8"x8" TEE PER UDACS PLT. #31	EA	-	1	-
11	INSTALL 1" PVC WATER LATERAL	LF	-	124	-
12	INSTALL TO 3" TAPPING SLEEVE W/ 3" TAPPING VALVE PER UDACS PLT. #34 & #39 & UDACS #2451.A	EA	1	-	-
13	INSTALL 8" RPPA WITH APPROVED COVER PER UDACS PLT. #56	EA	1	-	-
14	INSTALL 2.25" BEND PER UDACS PLT. #31	EA	-	2	-
15	INSTALL FIRE HYDRANT ASSEMBLY W/ GATE VALVE PER UDACS PLT. #40	EA	-	1	-
16	INSTALL 8"x8" REDUCER W/ THRUST BLOCK PER UDACS PLT. #30	EA	-	1	-

### CONSTRUCTION NOTES

#	ITEM	UNIT	PUBLIC	PRIVATE	QUANTITY
1	SAWCUT NEAT AND MATCH EXIST'G	LF	278	-	-
2	TRENCH AND BACKFILL AC RESTORATION PER CCASUD #503, #500.4, & #500.5	SF	182	-	-

#### FIRE FLOW CALCULATIONS

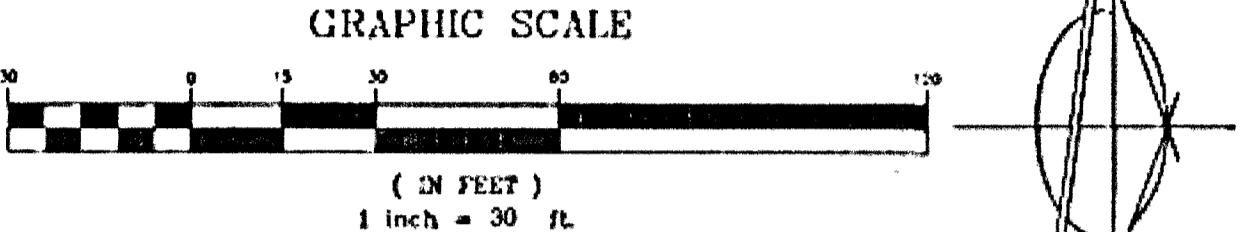
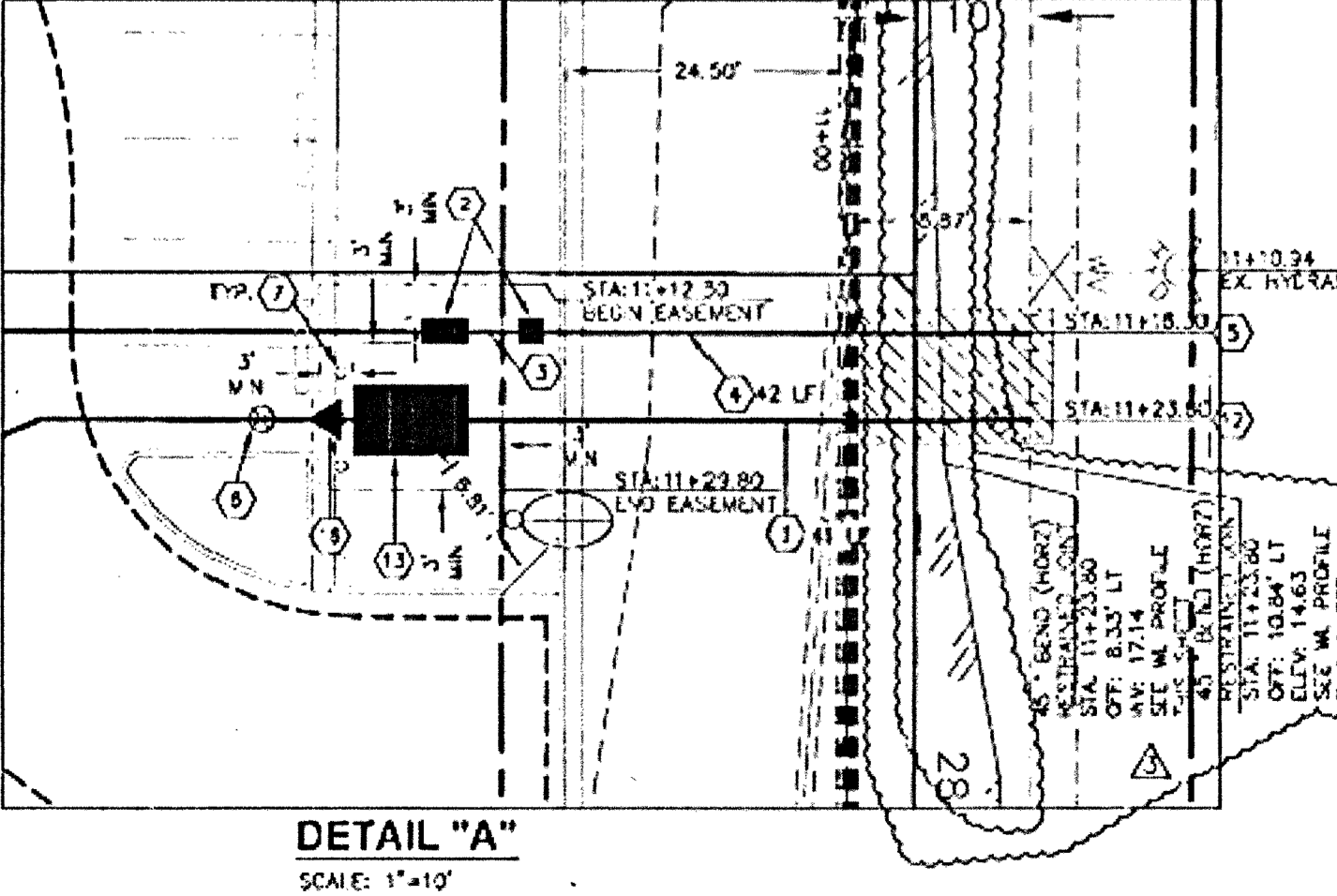
FIRE FLOW REQUIRED IS 1,500 GALLONS PER MINUTE AT 20 PSI RESIDUAL PRESSURE.

BASED ON:  
 2000 MINUTIA: 11,500 SQUARE FEET  
 LARGEST AREA BETWEEN 4-HOUR AREA SEPARATION WALLS: 4/4 SQUARE FEET  
 BUILDING HEIGHT: 35' MAX  
 NUMBER OF STORES: 1 FLOORS  
 TYPE OF CONSTRUCTION: V-3  
 OCCUPANCY: FULL AUTOMATIC FIRE SPRINKLER SYSTEM  
 REVIEWED BY: [Signature] DATE: 11/14/14

#### NOTE

ALL ABOVE GROUND UTILITY APPURTENANCES SHALL CONFORM TO THE REQUIREMENTS OF TITLE 19.12.040.

THIS PROPERTY MAY HAVE STATIC WATER PRESSURE IN EXCESS OF 80 PSI. THE UNIFORM PLUMBING CODE REQUIRES THAT INDIVIDUAL, ON-SITE (PRIVATE), PRESSURE REDUCING VALVES BE INSTALLED WHENEVER THE PRESSURE EXCEEDS 80 PSI. PRVS ARE THE DEVELOPER'S RESPONSIBILITY, AND WILL BE INSPECTED OR INCLUDED IN THE ACCEPTANCE OF LVWD FACILITIES.



#### REDUCED PRESSURE PRINCIPLE ASSY (1)-1"

APPROVED REDUCED PRESSURE PRINCIPLE ASSEMBLY(S) SHALL BE INSTALLED PER THE UDACS PLATE NO. 8. NO WATER SHALL BE TAKEN FROM A SERVICE REQUIRING BACKFLOW PREVENTION UNTIL THE REDUCED PRESSURE PRINCIPLE ASSEMBLY HAS BEEN SUCCESSFULLY TESTED BY THE LVWD.

ANY BLOCK WALL OR OTHER FENCE MATERIAL SHALL BE DESIGNED AND CONSTRUCTED AROUND THE OUTSIDE OF THE EASEMENT(S) TO ALLOW THE DISTRICT ACCESS FROM THE RIGHT-OF-WAY.

EASEMENTS SHALL BE CLEARLY MARKED OR STAKED PRIOR TO THE START OF CONSTRUCTION.

#### REDUCED PRESSURE DETECTOR ASSEMBLY (RPDA) (1) 8"

THE REDUCED PRESSURE DETECTOR ASSEMBLY(S) SHALL BE INSTALLED IN ACCORDANCE WITH THE UDACS PLATE NO. 59 AND DETAIL THIS SHEET.

ANY BLOCK WALL OR OTHER FENCE MATERIAL SHALL BE DESIGNED AND CONSTRUCTED AROUND THE OUTSIDE OF THE EASEMENT(S) SO AS TO ALLOW THE DISTRICT DIRECT ACCESS FROM THE ADJACENT RIGHT-OF-WAY.

EASEMENTS SHALL BE CLEARLY MARKED OR STAKED PRIOR TO THE START OF CONSTRUCTION.

#### NOTE

THE WATER DISTRICT CANNOT GUARANTEE SHUTDOWN HERE. CONNECTIONS OR REPAIRS TO EXISTING FACILITIES ARE REQUIRED. THE CONTRACTOR SHALL ENSURE ALL LABOR AND EQUIPMENT IS AVAILABLE TO REMOVE FLUWIDE WATER THAT MAY OCCUR CONSTRUCTION AT ALL TIMES. COORDINATION WITH THE INSPECTION DIVISION MUST TAKE PLACE PRIOR TO ANY TRENCH SHUTDOWN.

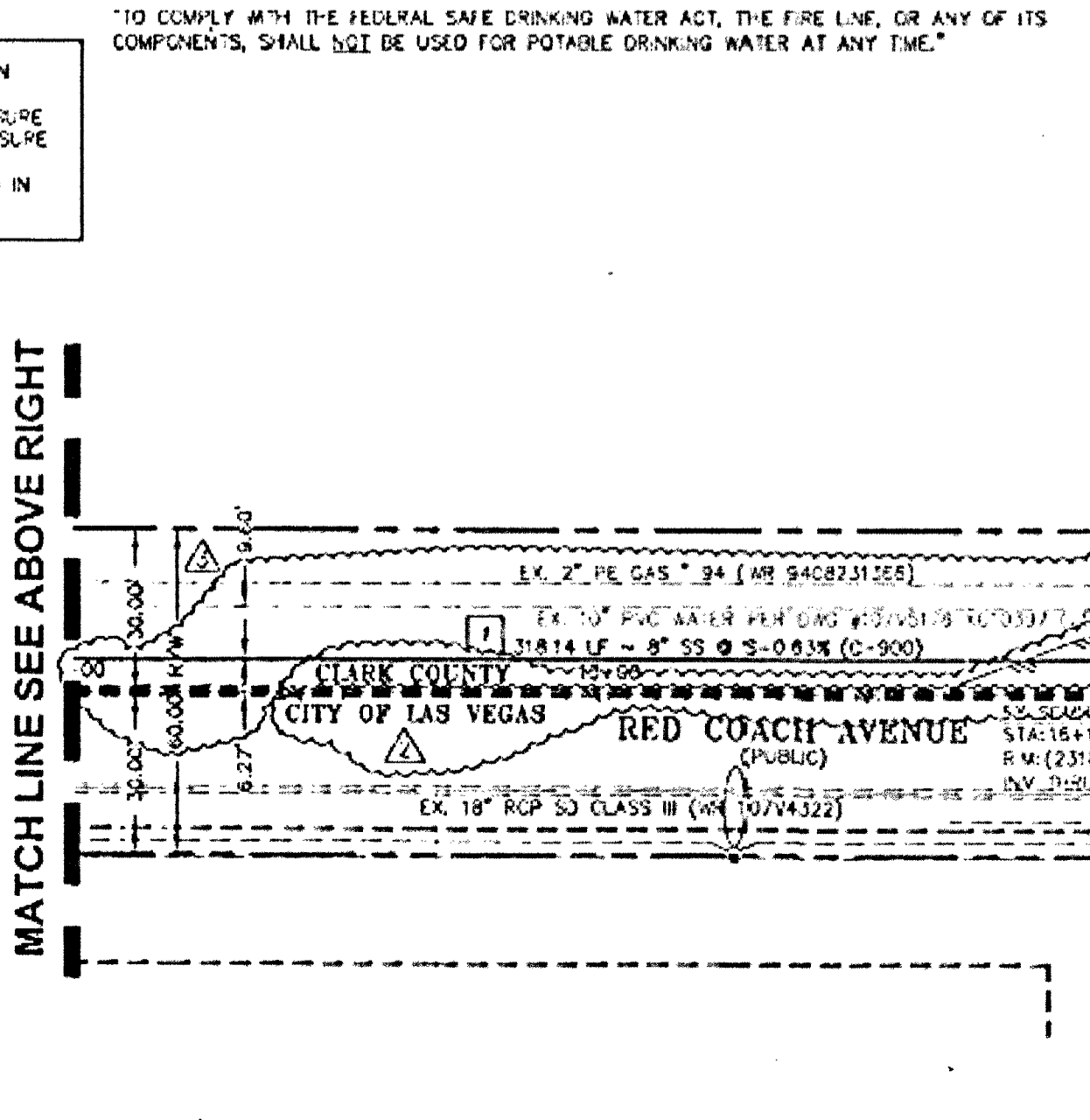
CONTRACTOR TO INSTALL TEMPORARY SERVICE TO ENSURE PROPER SHUTDOWN IN THE EVENT NO OTHER APPURTENANCES ARE AVAILABLE.

#### CROSSING NOTE

ALL SEWER/STORM DRAINS CROSSING WATER LINES MUST CONFORM TO SECTION 2.22 OF THE UNIFORM DESIGN AND CONSTRUCTION STANDARDS FOR POTABLE WATER SYSTEMS (UDACS) FOR WATER AND STORM MAIN CROSSING AND CLEARANCES.

#### WARNING FIRE LINE (NON-POTABLE WATER) ALL EXISTING, RELOCATED OR PROPOSED DCDA/RPDA INSTALLATIONS:

TO COMPLY WITH THE FEDERAL SAFE DRINKING WATER ACT, THE FIRE LINE, OR ANY OF ITS COMPONENTS, SHALL NOT BE USED FOR POTABLE DRINKING WATER AT ANY TIME.



#### FOR TRENCHES FOUR (4) FEET WIDE AND GREATER

CONTRACTORS MUST SUBMIT SHOP DRAWINGS LVWD ENGINEERING SERVICES BEFORE CONSTRUCTION TO SHOW HOW WATER LINES SPANNING A TRENCH WILL BE SUPPORTED DURING EXCAVATION AND BACKFILL.

SUPPORTED PIPE MAY BE EXPOSED FOR 90 DAYS LOWER THAN 90 DAYS MAXIMUM. IF THE PIPE WILL BE EXPOSED FOR MORE THAN 90 DAYS, PIPE MUST BE RELOCATED TO APPROVED PLANS.

IF THE PIPE MATERIAL IS ACP, REPLACE FROM COUPLING TO COUPLING WITH DUCTILE IRON PIPE.

#### WATER MAIN JOINT DEFLECTION (PVC 4"-24")

PVC PIPE SHALL BE DEFLECTED AT A JOINT ONLY. THE MAXIMUM ALLOWABLE DEFLECTION SHALL BE ONE (1) DEGREE PER JOINT WITH A 4" MINIMUM RADIUS OF CURVATURE OR 1,150 FEET, PER UDACS 2.07.01 AND 2.07.02.

FOR CHANGES IN DIRECTION EXCEEDING THE MAXIMUM ALLOWABLE JOINT DEFLECTION, FITTINGS SHALL BE USED.

#### WARNING FIRE LINE (NON-POTABLE WATER) ALL EXISTING, RELOCATED OR PROPOSED DCDA/RPDA INSTALLATIONS:

TO COMPLY WITH THE FEDERAL SAFE DRINKING WATER ACT, THE FIRE LINE, OR ANY OF ITS COMPONENTS, SHALL NOT BE USED FOR POTABLE DRINKING WATER AT ANY TIME.

#### PER PLAN WITH THIS EXCEPTION

[Handwritten note with arrow pointing to a specific detail on the plan.]

#### DISCLAIMER NOTE

UTILITY LOCATIONS SHOWN HEREON ARE APPROXIMATE ONLY. IT SHALL BE THE CONTRACTOR'S RESPONSIBILITY TO DETERMINE THE EXACT HORIZONTAL AND VERTICAL LOCATION OF ALL EXISTING UNDERGROUND AND OVERHEAD UTILITIES PRIOR TO COMMENCING CONSTRUCTION. NO REPRESENTATION IS MADE THAT ALL EXISTING UTILITIES ARE SHOWN HEREON. THE ENGINEER ASSUMES NO RESPONSIBILITY FOR UTILITIES NOT SHOWN OR UTILITIES NOT SHOWN IN THEIR PROPER LOCATION.

#### DISCLAIMER NOTE

UTILITY LOCATIONS SHOWN HEREON ARE APPROXIMATE ONLY. IT SHALL BE THE CONTRACTOR'S RESPONSIBILITY TO DETERMINE THE EXACT HORIZONTAL AND VERTICAL LOCATION OF ALL EXISTING UNDERGROUND AND OVERHEAD UTILITIES PRIOR TO COMMENCING CONSTRUCTION. NO REPRESENTATION IS MADE THAT ALL EXISTING UTILITIES ARE SHOWN HEREON. THE ENGINEER ASSUMES NO RESPONSIBILITY FOR UTILITIES NOT SHOWN OR UTILITIES NOT SHOWN IN THEIR PROPER LOCATION.

#### DISCLAIMER NOTE

UTILITY LOCATIONS SHOWN HEREON ARE APPROXIMATE ONLY. IT SHALL BE THE CONTRACTOR'S RESPONSIBILITY TO DETERMINE THE EXACT HORIZONTAL AND VERTICAL LOCATION OF ALL EXISTING UNDERGROUND AND OVERHEAD UTILITIES PRIOR TO COMMENCING CONSTRUCTION. NO REPRESENTATION IS MADE THAT ALL EXISTING UTILITIES ARE SHOWN HEREON. THE ENGINEER ASSUMES NO RESPONSIBILITY FOR UTILITIES NOT SHOWN OR UTILITIES NOT SHOWN IN THEIR PROPER LOCATION.

#### DISCLAIMER NOTE

UTILITY LOCATIONS SHOWN HEREON ARE APPROXIMATE ONLY. IT SHALL BE THE CONTRACTOR'S RESPONSIBILITY TO DETERMINE THE EXACT HORIZONTAL AND VERTICAL LOCATION OF ALL EXISTING UNDERGROUND AND OVERHEAD UTILITIES PRIOR TO COMMENCING CONSTRUCTION. NO REPRESENTATION IS MADE THAT ALL EXISTING UTILITIES ARE SHOWN HEREON. THE ENGINEER ASSUMES NO RESPONSIBILITY FOR UTILITIES NOT SHOWN OR UTILITIES NOT SHOWN IN THEIR PROPER LOCATION.

#### DISCLAIMER NOTE

UTILITY LOCATIONS SHOWN HEREON ARE APPROXIMATE ONLY. IT SHALL BE THE CONTRACTOR'S RESPONSIBILITY TO DETERMINE THE EXACT HORIZONTAL AND VERTICAL LOCATION OF ALL EXISTING UNDERGROUND AND OVERHEAD UTILITIES PRIOR TO COMMENCING CONSTRUCTION. NO REPRESENTATION IS MADE THAT ALL EXISTING UTILITIES ARE SHOWN HEREON. THE ENGINEER ASSUMES NO RESPONSIBILITY FOR UTILITIES NOT SHOWN OR UTILITIES NOT SHOWN IN THEIR PROPER LOCATION.

#### DISCLAIMER NOTE

UTILITY LOCATIONS SHOWN HEREON ARE APPROXIMATE ONLY. IT SHALL BE THE CONTRACTOR'S RESPONSIBILITY TO DETERMINE THE EXACT HORIZONTAL AND VERTICAL LOCATION OF ALL EXISTING UNDERGROUND AND OVERHEAD UTILITIES PRIOR TO COMMENCING CONSTRUCTION. NO REPRESENTATION IS MADE THAT ALL EXISTING UTILITIES ARE SHOWN HEREON. THE ENGINEER ASSUMES NO RESPONSIBILITY FOR UTILITIES NOT SHOWN OR UTILITIES NOT SHOWN IN THEIR PROPER LOCATION.

#### DISCLAIMER NOTE

UTILITY LOCATIONS SHOWN HEREON ARE APPROXIMATE ONLY. IT SHALL BE THE CONTRACTOR'S RESPONSIBILITY TO DETERMINE THE EXACT HORIZONTAL AND VERTICAL LOCATION OF ALL EXISTING UNDERGROUND AND OVERHEAD UTILITIES PRIOR TO COMMENCING CONSTRUCTION. NO REPRESENTATION IS MADE THAT ALL EXISTING UTILITIES ARE SHOWN HEREON. THE ENGINEER ASSUMES NO RESPONSIBILITY FOR UTILITIES NOT SHOWN OR UTILITIES NOT SHOWN IN THEIR PROPER LOCATION.

#### DISCLAIMER NOTE

UTILITY LOCATIONS SHOWN HEREON ARE APPROXIMATE ONLY. IT SHALL BE THE CONTRACTOR'S RESPONSIBILITY TO DETERMINE THE EXACT HORIZONTAL AND VERTICAL LOCATION OF ALL EXISTING UNDERGROUND AND OVERHEAD UTILITIES PRIOR TO COMMENCING CONSTRUCTION. NO REPRESENTATION IS MADE THAT ALL EXISTING UTILITIES ARE SHOWN HEREON. THE ENGINEER ASSUMES NO RESPONSIBILITY FOR UTILITIES NOT SHOWN OR UTILITIES NOT SHOWN IN THEIR PROPER LOCATION.

#### DISCLAIMER NOTE

UTILITY LOCATIONS SHOWN HEREON ARE APPROXIMATE ONLY. IT SHALL BE THE CONTRACTOR'S RESPONSIBILITY TO DETERMINE THE EXACT HORIZONTAL AND VERTICAL LOCATION OF ALL EXISTING UNDERGROUND AND OVERHEAD UTILITIES PRIOR TO COMMENCING CONSTRUCTION. NO REPRESENTATION IS MADE THAT ALL EXISTING UTILITIES ARE SHOWN HEREON. THE ENGINEER ASSUMES NO RESPONSIBILITY FOR UTILITIES NOT SHOWN OR UTILITIES NOT SHOWN IN THEIR PROPER LOCATION.

#### DISCLAIMER NOTE

UTILITY LOCATIONS SHOWN HEREON ARE APPROXIMATE ONLY. IT SHALL BE THE CONTRACTOR'S RESPONSIBILITY TO DETERMINE THE EXACT HORIZONTAL AND VERTICAL LOCATION OF ALL EXISTING UNDERGROUND AND OVERHEAD UTILITIES PRIOR TO COMMENCING CONSTRUCTION. NO REPRESENTATION IS MADE THAT ALL EXISTING UTILITIES ARE SHOWN HEREON. THE ENGINEER ASSUMES NO RESPONSIBILITY FOR UTILITIES NOT SHOWN OR UTILITIES NOT SHOWN IN THEIR PROPER LOCATION.

#### LEGEND

PROPERTY LINE  
 STREET CENTERLINE  
 PROP "L" CURB & GUTTER  
 EXIST. "L" CURB & GUTTER  
 PROP SCREEN/RETAINING WALL  
 EXIST SCREEN/RETAINING WALL  
 PROP WTR  
 EXIST WTR  
 PROP SS  
 EXIST SS  
 WATER CONSTRUCTION NOTE  
 SEWER CONSTRUCTION NOTE  
 PROP. HYDRANT  
 EX. HYDRANT  
 EXISTING SSMH  
 PROPOSED SSMH  
 EXISTING WATER VALVE  
 EXISTING STREETLIGHT  
 PROP. 250 W HPS LUMINAIRE  
 EX. 250 W HPS LUMINAIRE  
 4" PVC SEWER LATERAL  
 1" WATER LATERAL WITH 1" METER & 1" RPPA  
 PRESSURE REDUCING VALVE  
 UTILITY TRENCH PER CCASUD #49504  
 PROPOSED WATER VALVE  
 SAW CUT AND MATCH EXIST'G

#### VICINITY MAP

APN: 138-03-501-015

#### LEGEND

PROPERTY LINE  
 STREET CENTERLINE  
 PROP "L" CURB & GUTTER  
 EXIST. "L" CURB & GUTTER  
 PROP SCREEN/RETAINING WALL  
 EXIST SCREEN/RETAINING WALL  
 PROP WTR  
 EXIST WTR  
 PROP SS  
 EXIST SS  
 WATER CONSTRUCTION NOTE  
 SEWER CONSTRUCTION NOTE  
 PROP. HYDRANT  
 EX. HYDRANT  
 EXISTING SSMH  
 PROPOSED SSMH  
 EXISTING WATER VALVE  
 EXISTING STREETLIGHT  
 PROP. 250 W HPS LUMINAIRE  
 EX. 250 W HPS LUMINAIRE  
 4" PVC SEWER LATERAL  
 1" WATER LATERAL WITH 1" METER & 1" RPPA  
 PRESSURE REDUCING VALVE  
 UTILITY TRENCH PER CCASUD #49504  
 PROPOSED WATER VALVE  
 SAW CUT AND MATCH EXIST'G

#### VICINITY MAP

APN: 138-03-501-015

#### LEGEND

PROPERTY LINE  
 STREET CENTERLINE  
 PROP "L" CURB & GUTTER  
 EXIST. "L" CURB & GUTTER  
 PROP SCREEN/RETAINING WALL  
 EXIST SCREEN/RETAINING WALL  
 PROP WTR  
 EXIST WTR  
 PROP SS  
 EXIST SS  
 WATER CONSTRUCTION NOTE  
 SEWER CONSTRUCTION NOTE  
 PROP. HYDRANT  
 EX. HYDRANT  
 EXISTING SSMH  
 PROPOSED SSMH  
 EXISTING WATER VALVE  
 EXISTING STREETLIGHT  
 PROP. 250 W HPS LUMINAIRE  
 EX. 250 W HPS LUMINAIRE  
 4" PVC SEWER LATERAL  
 1" WATER LATERAL WITH 1" METER & 1" RPPA  
 PRESSURE REDUCING VALVE  
 UTILITY TRENCH PER CCASUD #49504  
 PROPOSED WATER VALVE  
 SAW CUT AND MATCH EXIST'G

#### VICINITY MAP

APN: 138-03-501-015

#### LEGEND

PROPERTY LINE  
 STREET CENTERLINE  
 PROP "L" CURB & GUTTER  
 EXIST. "L" CURB & GUTTER  
 PROP SCREEN/RETAINING WALL  
 EXIST SCREEN/RETAINING WALL  
 PROP WTR  
 EXIST WTR  
 PROP SS  
 EXIST SS  
 WATER CONSTRUCTION NOTE  
 SEWER CONSTRUCTION NOTE  
 PROP. HYDRANT  
 EX. HYDRANT  
 EXISTING SSMH  
 PROPOSED SSMH  
 EXISTING WATER VALVE  
 EXISTING STREETLIGHT  
 PROP. 250 W HPS LUMINAIRE  
 EX. 250 W HPS LUMINAIRE  
 4" PVC SEWER LATERAL  
 1" WATER LATERAL WITH 1" METER & 1" RPPA  
 PRESSURE REDUCING VALVE  
 UTILITY TRENCH PER CCASUD #49504  
 PROPOSED WATER VALVE  
 SAW CUT AND MATCH EXIST'G

#### VICINITY MAP

APN: 138-03-501-015

#### LEGEND

PROPERTY LINE  
 STREET CENTERLINE  
 PROP "L" CURB & GUTTER  
 EXIST. "L" CURB & GUTTER  
 PROP SCREEN/RETAINING WALL  
 EXIST SCREEN/RETAINING WALL  
 PROP WTR  
 EXIST WTR  
 PROP SS  
 EXIST SS  
 WATER CONSTRUCTION NOTE  
 SEWER CONSTRUCTION NOTE  
 PROP. HYDRANT  
 EX. HYDRANT  
 EXISTING SSMH  
 PROPOSED SSMH  
 EXISTING WATER VALVE  
 EXISTING STREETLIGHT  
 PROP. 250 W HPS LUMINAIRE  
 EX. 250 W HPS LUMINAIRE  
 4" PVC SEWER LATERAL  
 1" WATER LATERAL WITH 1" METER & 1" RPPA  
 PRESSURE REDUCING VALVE  
 UTILITY TRENCH PER CCASUD #49504  
 PROPOSED WATER VALVE  
 SAW CUT AND MATCH EXIST'G

#### VICINITY MAP

APN: 138-03-501-015

#### LEGEND

PROPERTY LINE  
 STREET CENTERLINE  
 PROP "L" CURB & GUTTER  
 EXIST. "L" CURB & GUTTER  
 PROP SCREEN/RETAINING WALL  
 EXIST SCREEN/RETAINING WALL  
 PROP WTR  
 EXIST WTR  
 PROP SS  
 EXIST SS  
 WATER CONSTRUCTION NOTE  
 SEWER CONSTRUCTION NOTE  
 PROP. HYDRANT  
 EX. HYDRANT  
 EXISTING SSMH  
 PROPOSED SSMH  
 EXISTING WATER VALVE  
 EXISTING STREETLIGHT  
 PROP. 250 W HPS LUMINAIRE  
 EX. 250 W HPS LUMINAIRE  
 4" PVC SEWER LATERAL  
 1" WATER LATERAL WITH 1" METER & 1" RPPA  
 PRESSURE REDUCING VALVE  
 UTILITY TRENCH PER CCASUD #49504  
 PROPOSED WATER VALVE  
 SAW CUT AND MATCH EXIST'G

#### VICINITY MAP

APN: 138-03-501-015

#### LEGEND

PROPERTY LINE  
 STREET CENTERLINE  
 PROP "L" CURB & GUTTER  
 EXIST. "L" CURB & GUTTER  
 PROP SCREEN/RETAINING WALL  
 EXIST SCREEN/RETAINING WALL  
 PROP WTR  
 EXIST WTR  
 PROP SS  
 EXIST SS  
 WATER CONSTRUCTION NOTE  
 SEWER CONSTRUCTION NOTE  
 PROP. HYDRANT  
 EX. HYDRANT  
 EXISTING SSMH  
 PROPOSED SSMH  
 EXISTING WATER VALVE  
 EXISTING STREETLIGHT  
 PROP. 250 W HPS LUMINAIRE  
 EX. 250 W HPS LUMINAIRE  
 4" PVC SEWER LATERAL  
 1" WATER LATERAL WITH 1" METER & 1" RPPA  
 PRESSURE REDUCING VALVE  
 UTILITY TRENCH PER CCASUD #49504  
 PROPOSED WATER VALVE  
 SAW CUT AND MATCH EXIST'G

#### VICINITY MAP

APN: 138-03-501-015

#### LEGEND

PROPERTY LINE  
 STREET CENTERLINE  
 PROP "L" CURB & GUTTER  
 EXIST. "L" CURB & GUTTER  
 PROP SCREEN/RETAINING WALL  
 EXIST SCREEN/RETAINING WALL  
 PROP WTR  
 EXIST WTR  
 PROP SS  
 EXIST SS  
 WATER CONSTRUCTION NOTE  
 SEWER CONSTRUCTION NOTE  
 PROP. HYDRANT  
 EX. HYDRANT  
 EXISTING SSMH  
 PROPOSED SSMH  
 EXISTING WATER VALVE  
 EXISTING STREETLIGHT  
 PROP. 250 W HPS LUMINAIRE  
 EX. 250 W HPS LUMINAIRE  
 4" PVC SEWER LATERAL  
 1" WATER LATERAL WITH 1" METER & 1" RPPA  
 PRESSURE REDUCING VALVE  
 UTILITY TRENCH PER CCASUD #49504  
 PROPOSED WATER VALVE  
 SAW CUT AND MATCH EXIST'G

#### VICINITY MAP

APN: 138-03-501-015

#### LEGEND

PROPERTY LINE  
 STREET CENTERLINE  
 PROP "L" CURB & GUTTER  
 EXIST. "L" CURB & GUTTER  
 PROP SCREEN/RETAINING WALL  
 EXIST SCREEN/RETAINING WALL  
 PROP WTR  
 EXIST WTR  
 PROP SS  
 EXIST SS  
 WATER CONSTRUCTION NOTE  
 SEWER CONSTRUCTION NOTE  
 PROP. HYDRANT  
 EX. HYDRANT  
 EXISTING SSMH  
 PROPOSED SSMH  
 EXISTING WATER VALVE  
 EXISTING STREETLIGHT  
 PROP. 250 W HPS LUMINAIRE  
 EX. 250 W HPS LUMINAIRE  
 4" PVC SEWER LATERAL  
 1" WATER LATERAL WITH 1" METER & 1" RPPA  
 PRESSURE REDUCING VALVE  
 UTILITY TRENCH PER CCASUD #49504  
 PROPOSED WATER VALVE  
 SAW CUT AND MATCH EXIST'G

#### VICINITY MAP

APN: 138-03-501-015

#### LEGEND

PROPERTY LINE  
 STREET CENTERLINE  
 PROP "L" CURB & GUTTER  
 EXIST. "L" CURB & GUTTER  
 PROP SCREEN/RETAINING WALL  
 EXIST SCREEN/RETAINING WALL  
 PROP WTR  
 EXIST WTR  
 PROP SS  
 EXIST SS  
 WATER CONSTRUCTION NOTE  
 SEWER CONSTRUCTION NOTE  
 PROP. HYDRANT  
 EX. HYDRANT  
 EXISTING SSMH  
 PROPOSED SSMH  
 EXISTING WATER VALVE  
 EXISTING STREETLIGHT  
 PROP. 250 W HPS LUMINAIRE  
 EX. 250 W HPS LUMINAIRE  
 4" PVC SEWER LATERAL  
 1" WATER LATERAL WITH 1" METER & 1" RPPA  
 PRESSURE REDUCING VALVE  
 UTILITY TRENCH PER CCASUD #49504  
 PROPOSED WATER VALVE  
 SAW CUT AND MATCH EXIST'G

#### VICINITY MAP

APN: 138-03-501-015

#### LEGEND

PROPERTY LINE  
 STREET CENTERLINE  
 PROP "L" CURB & GUTTER  
 EXIST. "L" CURB & GUTTER  
 PROP SCREEN/RETAINING WALL  
 EXIST SCREEN/RETAINING WALL  
 PROP WTR  
 EXIST WTR  
 PROP SS  
 EXIST SS  
 WATER CONSTRUCTION NOTE  
 SEWER CONSTRUCTION NOTE  
 PROP. HYDRANT  
 EX. HYDRANT  
 EXISTING SSMH  
 PROPOSED SSMH  
 EXISTING WATER VALVE  
 EXISTING STREETLIGHT  
 PROP. 250 W HPS LUMINAIRE  
 EX. 250 W HPS LUMINAIRE  
 4" PVC SEWER LATERAL  
 1" WATER LATERAL WITH 1" METER & 1" RPPA  
 PRESSURE REDUCING VALVE  
 UTILITY TRENCH PER CCASUD #49504  
 PROPOSED WATER VALVE  
 SAW CUT AND MATCH EXIST'G

#### VICINITY MAP

APN: 138-03-501-015

#### LEGEND

PROPERTY LINE  
 STREET CENTERLINE  
 PROP "L" CURB & GUTTER  
 EXIST. "L" CURB & GUTTER  
 PROP SCREEN/RETAINING WALL  
 EXIST SCREEN/RETAINING WALL  
 PROP WTR  
 EXIST WTR  
 PROP SS  
 EXIST SS  
 WATER CONSTRUCTION NOTE  
 SEWER CONSTRUCTION NOTE  
 PROP. HYDRANT  
 EX. HYDRANT  
 EXISTING SSMH  
 PROPOSED SSMH  
 EXISTING WATER VALVE  
 EXISTING STREETLIGHT  
 PROP. 250 W HPS LUMINAIRE  
 EX. 250 W HPS LUMINAIRE  
 4" PVC SEWER LATERAL  
 1" WATER LATERAL WITH 1" METER & 1" RPPA  
 PRESSURE REDUCING VALVE  
 UTILITY TRENCH PER CCASUD #49504  
 PROPOSED WATER VALVE  
 SAW CUT AND MATCH EXIST'G

#### VICINITY MAP

APN: 138-03-501-015

#### LEGEND

PROPERTY LINE  
 STREET CENTERLINE  
 PROP "L" CURB & GUTTER  
 EXIST. "L" CURB & GUTTER  
 PROP SCREEN/RETAINING WALL  
 EXIST SCREEN/RETAINING WALL  
 PROP WTR  
 EXIST WTR  
 PROP SS  
 EXIST SS  
 WATER CONSTRUCTION NOTE  
 SEWER CONSTRUCTION NOTE  
 PROP. HYDRANT  
 EX. HYDRANT  
 EXISTING SSMH  
 PROPOSED SSMH  
 EXISTING WATER VALVE  
 EXISTING STREETLIGHT  
 PROP. 250 W HPS LUMINAIRE  
 EX. 250 W HPS LUMINAIRE  
 4" PVC SEWER LATERAL  
 1" WATER LATERAL WITH 1" METER & 1" RPPA  
 PRESSURE REDUCING VALVE  
 UTILITY TRENCH PER CCASUD #49504  
 PROPOSED WATER VALVE  
 SAW CUT AND MATCH EXIST'G

#### VICINITY MAP

APN: 138-03-501-015

#### LEGEND

PROPERTY LINE  
 STREET CENTERLINE  
 PROP "L" CURB & GUTTER  
 EXIST. "L" CURB & GUTTER  
 PROP SCREEN/RETAINING WALL  
 EXIST SCREEN/RETAINING WALL  
 PROP WTR  
 EXIST WTR  
 PROP SS  
 EXIST SS  
 WATER CONSTRUCTION NOTE  
 SEWER CONSTRUCTION NOTE  
 PROP. HYDRANT  
 EX. HYDRANT  
 EXISTING SSMH  
 PROPOSED SSMH  
 EXISTING WATER VALVE  
 EXISTING STREETLIGHT  
 PROP. 250 W HPS LUMINAIRE  
 EX. 250 W HPS LUMINAIRE  
 4" PVC SEWER LATERAL  
 1" WATER LATERAL WITH 1" METER & 1" RPPA  
 PRESSURE REDUCING VALVE  
 UTILITY TRENCH PER CCASUD #49504  
 PROPOSED WATER VALVE  
 SAW CUT AND MATCH EXIST'G

#### VICINITY MAP

APN: 138-03-501-015

REVISIONS: 10/28/13 REVISED SS LOC. AND LABELS  
 04/14/14 CLARK COUNTY REFER COMMENTS  
 09/29/14 REQUIRED UTILITY TO RELOC. FIELD INFORMATION, COMMENTS  
 12/14/14 SEWER COMMENTS

PREPARED FOR: WHEELER/LIVERI  
 DATE: FEBRUARY 2012  
 DESIGN: BAUGHMAN & TURNER, INC.  
 CIVIL ENGINEERS AND SURVEYORS  
 270 WINDSOR STREET  
 LAS VEGAS, NEVADA 89102  
 (702) 870-8771

PROJECT NO. 107V6065  
 SHEET NO. 5 OF 8  
 PROJECT NO. 107V6065

APN: 138-03-602-018  
 KABOOM BATTING ACADEMY  
 UTILITY PLAN

1ST APP'D 8-13-13  
 LAS VEGAS VALLEY DISTRICT ENGINEERING SERVICES MANAGER DATE  
 DATE: 12/02/14 PROJECT NO. 122561  
 LVWD APPROVED THE BELOW 1500 GPM AT 20 PSI RESIDUAL  
 LAS VEGAS FIRE & RESCUE  
 DATE: 11/14/14

DISCLAIMER NOTE  
 UTILITY LOCATIONS SHOWN HEREON ARE APPROXIMATE ONLY. IT SHALL BE THE CONTRACTOR'S RESPONSIBILITY TO DETERMINE THE EXACT HORIZONTAL AND VERTICAL LOCATION OF ALL EXISTING UNDERGROUND AND OVERHEAD UTILITIES PRIOR TO COMMENCING CONSTRUCTION. NO REPRESENTATION IS MADE THAT ALL EXISTING UTILITIES ARE SHOWN HEREON. THE ENGINEER ASSUMES NO RESPONSIBILITY FOR UTILITIES NOT SHOWN OR UTILITIES NOT SHOWN IN THEIR PROPER LOCATION.

DISCLAIMER NOTE  
 UTILITY LOCATIONS SHOWN HEREON ARE APPROXIMATE ONLY. IT SHALL BE THE CONTRACTOR'S RESPONSIBILITY TO DETERMINE THE EXACT HORIZONTAL AND VERTICAL LOCATION OF ALL EXISTING UNDERGROUND AND OVERHEAD UTILITIES PRIOR TO COMMENCING CONSTRUCTION. NO REPRESENTATION IS MADE THAT ALL EXISTING UTILITIES ARE SHOWN HEREON. THE ENGINEER ASSUMES NO RESPONSIBILITY FOR UTILITIES NOT SHOWN OR UTILITIES NOT SHOWN IN THEIR PROPER LOCATION.

DISCLAIMER NOTE  
 UTILITY LOCATIONS SHOWN HEREON ARE APPROXIMATE ONLY. IT SHALL BE THE CONTRACTOR'S RESPONSIBILITY TO DETERMINE THE EXACT HORIZONTAL AND VERTICAL LOCATION OF ALL EXISTING UNDERGROUND AND OVERHEAD UTILITIES PRIOR TO COMMENCING CONSTRUCTION. NO REPRESENTATION IS MADE THAT ALL EXISTING UTILITIES ARE SHOWN HEREON. THE ENGINEER ASSUMES NO RESPONSIBILITY FOR UTILITIES NOT SHOWN OR UTILITIES NOT SHOWN IN THEIR PROPER LOCATION.

CLV SEWER AS-BUILT