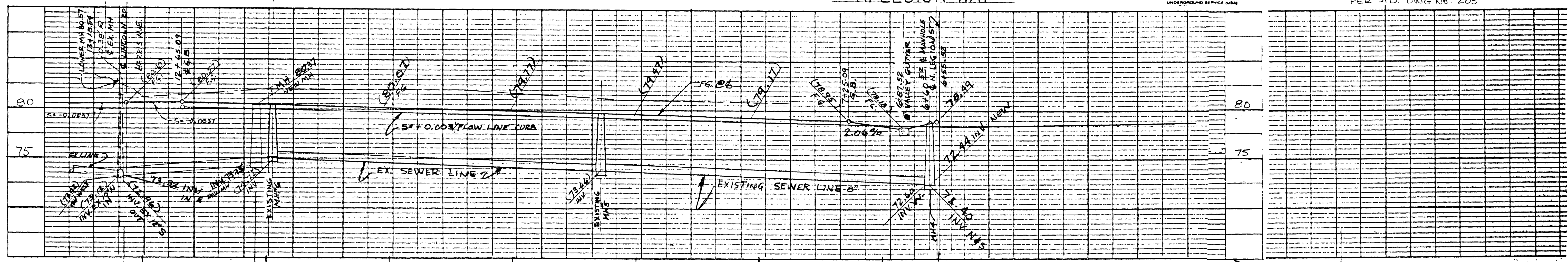


**Call before you Dig.**  
1-800-227-2600

NON-RESIDENTIAL LOCAL OR MINOR RESIDENTIAL COLLECTOR  
NOT TO SCALE  
STREET DESIGN CS 3+00 TO 19+66.56  
PER STD. DING NO. 205

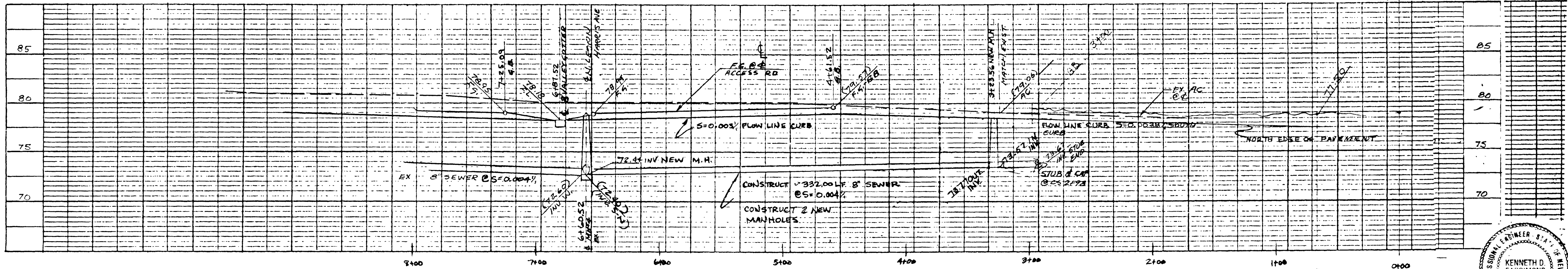
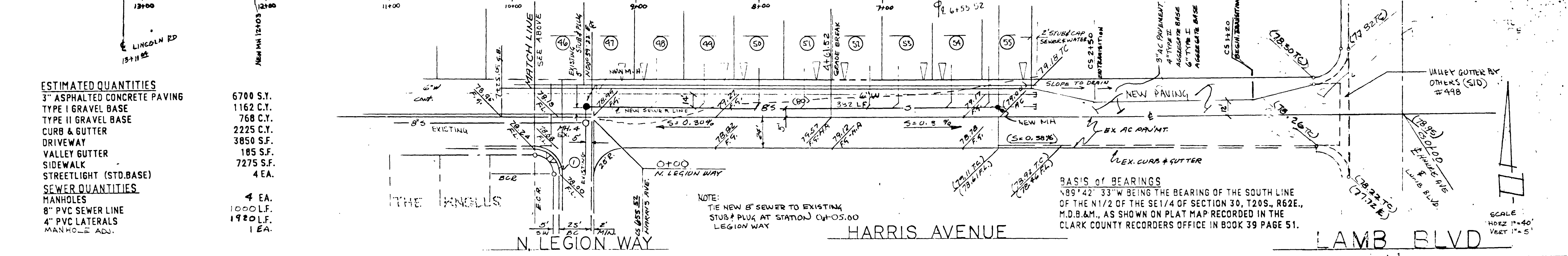


**ESTIMATED QUANTITIES**

3" ASPHALTED CONCRETE PAVING	6700 S.F.
TYPE I GRAVEL BASE	1162 C.Y.
TYPE II GRAVEL BASE	768 C.Y.
CURB & GUTTER	2225 C.Y.
DRIVEWAY	3850 S.F.
VALLEY GUTTER	185 S.F.
SIDEWALK	7275 S.F.
STREETLIGHT (STD. BASE)	4 EA.

**SEWER QUANTITIES**

MANHOLES	4 EA.
8" PVC SEWER LINE	1000 L.F.
4" PVC LATERALS	1920 L.F.
MANHOLE ADJ.	1 EA.



BENCHMARK  
CITY OF LAS VEGAS #0623002 S.W. CORNER LAMB AND HARRIS  
ELEVATION, 1,777.756

PROFESSIONAL ENGINEER STATE OF NEVADA  
KENNETH D. FARRIMOND  
CIVIL  
No. 4134  
7/19/91

KENNETH D. FARRIMOND, PE., PLS.  
3407 S. El Camino Rd.  
Las Vegas, Nevada  
Phone 457 6113  
ENGINEERS/PLANNERS/SURVEYORS

STREET PLAN & PROFILE OF SEWER DESIGN-HARRIS AVE.  
COOL VALLEY SUBDIVISION  
BEING A PORTION OF THE NORTH 1/2 (N 1/2) OF THE  
SOUTHEAST 1/4 (SE 1/4) OF SECTION 30,  
TOWNSHIP 20 S., RANGE 62 E., M.D.B.&M.  
CLARK COUNTY, NEVADA

SHEET NO.  
4 OF 7  
3014-4185

