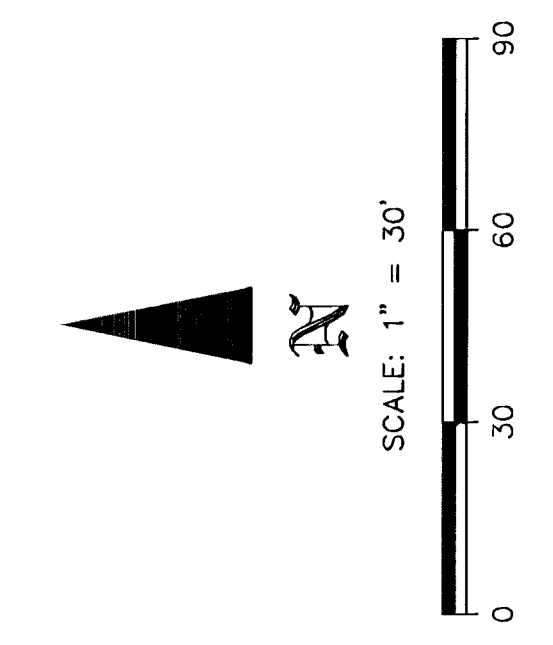
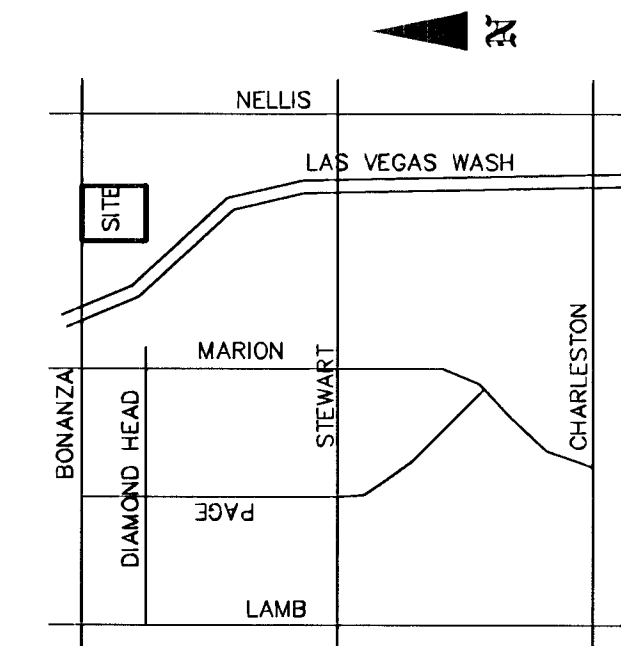


(EXISTING K-MART SHOPPING CENTER)
APN 140-32-502-003



REV	DATE	BY	REVISION

PREPARED FOR: HARRY DEVELOPMENT
7020 YATES AVENUE, SUITE 100
LAS VEGAS, NV 89137
harrydevelopment@cox.net

BY: GIS Engineering
6655 W. Sahara Ave. Suite B500
Las Vegas, NV 89146
Phone (702) 327-2524
Fax (702) 946-8824

UTILITIES PLAN

BONANZA SPRINGS RESORT HOMES
4901 EAST BONANZA ROAD
CITY OF LAS VEGAS, NEVADA

DRAWN BY: L.H. AFFLECK	DATE: 03/12/13
DESIGNED BY: L.H. AFFLECK	DATE: 03/12/13
CHECKED BY: J.J. JENSEN	DATE: 06/08/13
PROJECT NO. 12-010	SCALE: AS NOTED

SEAL

SHEET C5
5 OF 5 SHEETS
DRAWING NO. 10115990

Donaldea
LVMH PROJECT NO. 121983
(APPLIES TO C1, C2, AND C5) DATE: 06/20/13

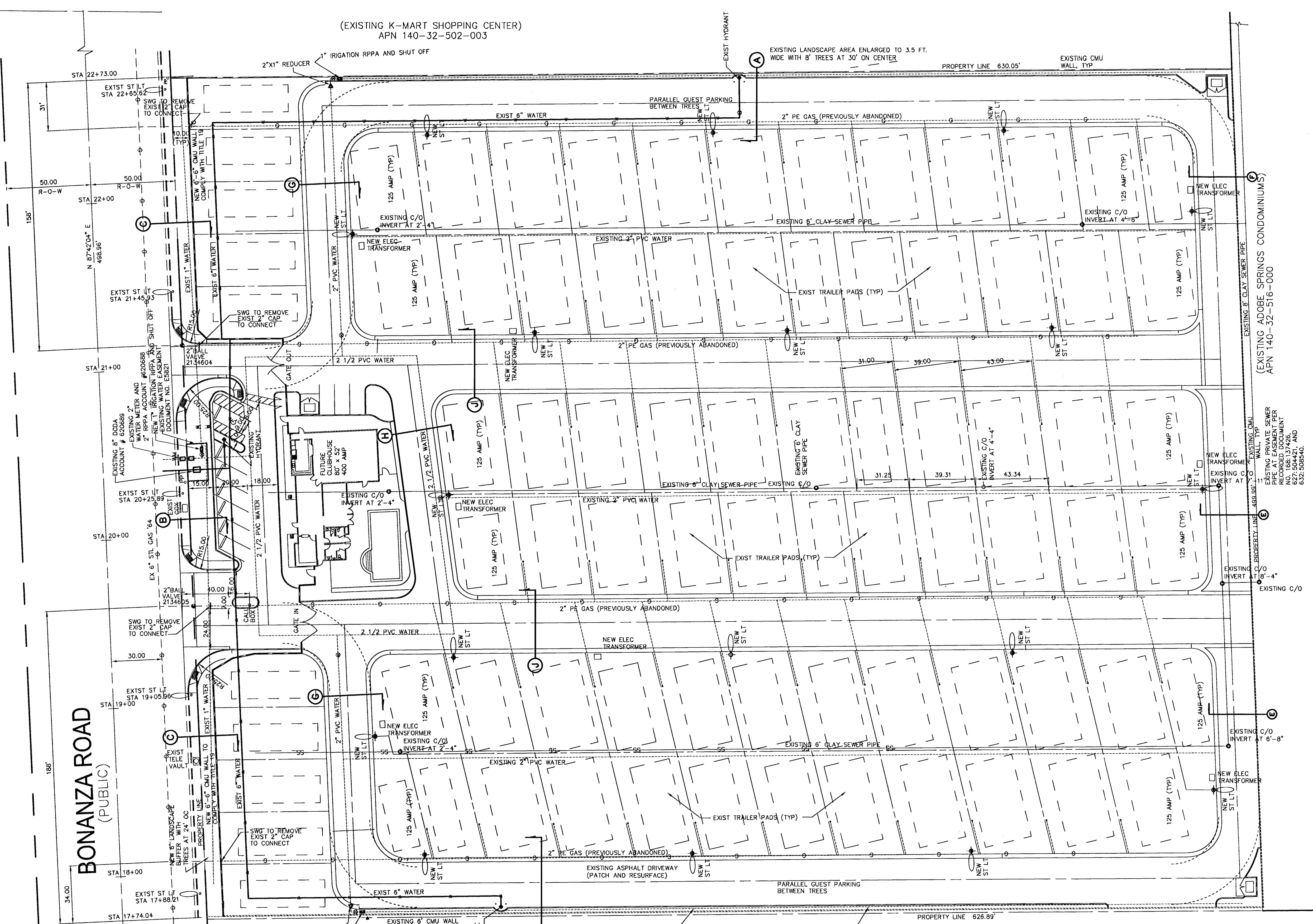
R. With
CLV FIRE DEPARTMENT DATE: 6/19/13

43805

BENCHMARK
CITY OF LAS VEGAS BENCHMARK - 2LV02295SE6
RIVET & PLATE IN TOP OF CURB ON THE NORTH SIDE OF BONANZA @ 4880 BONANZA ROAD.
NAVD88
ELEVATION = 1763.90 FEET.

BASIS OF BEARING
NORTH 02°28'45" WEST BEING THE BEARING OF THE WEST LINE OF THE SOUTHWEST QUARTER (NE¼) OF THE NORTHEAST QUARTER (NE¼) OF SECTION 32, TOWNSHIP 20 SOUTH, RANGE 62 EAST, MDM, PER LAND DIVISION FILE 21 PAGE 75, AND FILE 10 PAGE 59.

LEGAL DESCRIPTION
THE WEST 500 FEET OF THE NORTH HALF (N½) OF THE NORTHEAST QUARTER (NE¼) OF THE NORTHEAST QUARTER (NE¼) OF SECTION 32, TOWNSHIP 20 SOUTH, RANGE 62 EAST, MDM.
EXCEPTING THEREFROM THOSE PORTIONS AS CONVEYED TO CITY OF LAS VEGAS BY DEED RECORDED DECEMBER 5, 1957, IN BOOK 146 AS DOCUMENT NO. 119969 AND AS DOCUMENT NO. 172464 OF OFFICIAL RECORDS.
EXCEPTING THEREFROM THE MOBILE HOME(S) OR MANUFACTURED HOUSING UNIT(S) AND APPURTENANCES, IF ANY, LOCATED ON SAID LAND.
APN 140-32-502-002



DISCLAIMER:
UTILITY LOCATIONS SHOWN HEREON ARE APPROXIMATE ONLY. IT SHALL BE THE CONTRACTOR'S RESPONSIBILITY TO DETERMINE THE EXACT HORIZONTAL AND VERTICAL LOCATION OF ALL EXISTING UNDERGROUND OR OVERHEAD UTILITIES PRIOR TO COMMENCING CONSTRUCTION. NO REPRESENTATION IS MADE THAT ALL EXISTING UTILITIES ARE SHOWN HEREON. THE ENGINEER ASSUMES NO RESPONSIBILITY FOR UTILITIES NOT SHOWN OR UTILITIES NOT SHOWN IN THEIR PROPER LOCATION.
CONTRACTOR TO NOTIFY ENGINEER OF ANY CHANGES OR DISCREPANCIES.

AVOID CUTTING UNDERGROUND UTILITY LINES. IT'S COSTLY.
Call 811 before you Dig
UNDERGROUND SERVICE ALERT (USA)

AVOID CUTTING UNDERGROUND UTILITY LINES. IT'S COSTLY.
Call before you OVERHEAD
1-702-227-2929
NEVADA POWER ENVIRONMENT AND SAFETY SERVICES DEPARTMENT

AVOID HITTING UNDERGROUND TRAFFIC SIGNAL SYSTEMS & STREET LIGHT CONDUITS. IT'S COSTLY.
Call before you UNDERGROUND
1-702-455-7511
Clark County Traffic Operations and
1-702-432-5300
Freeway Arterial System of Transportation (F.A.S.T.)

UTILITIES PLAN
SCALE: 1" = 30'

NOTE: ALL ABOVE GROUND UTILITY APPURTENANCES WILL CONFORM TO THE REQUIREMENTS OF TITLE 19.08.
NOTE: PROTECT EXISTING WATER UTILITIES IN PLACE.

NOTE: POWER TO STREET LIGHTS TO JOINT TRENCH WITH NV ENERGY
NOTE: ALL LOCATIONS OF UTILITIES SHOWN ARE APPROXIMATE.

(EXISTING SELF STORAGE)
APN 140-32-502-001

2437