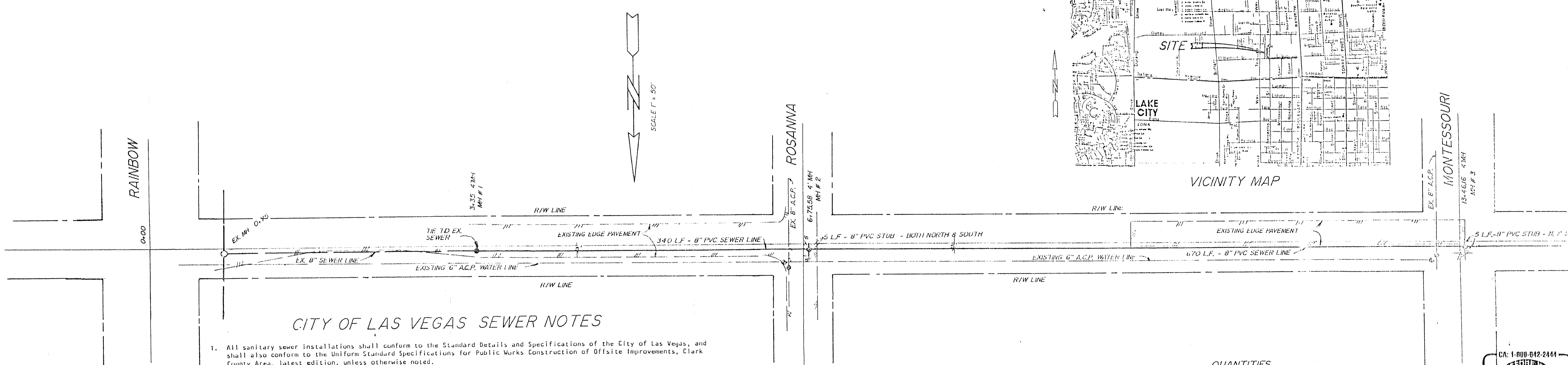
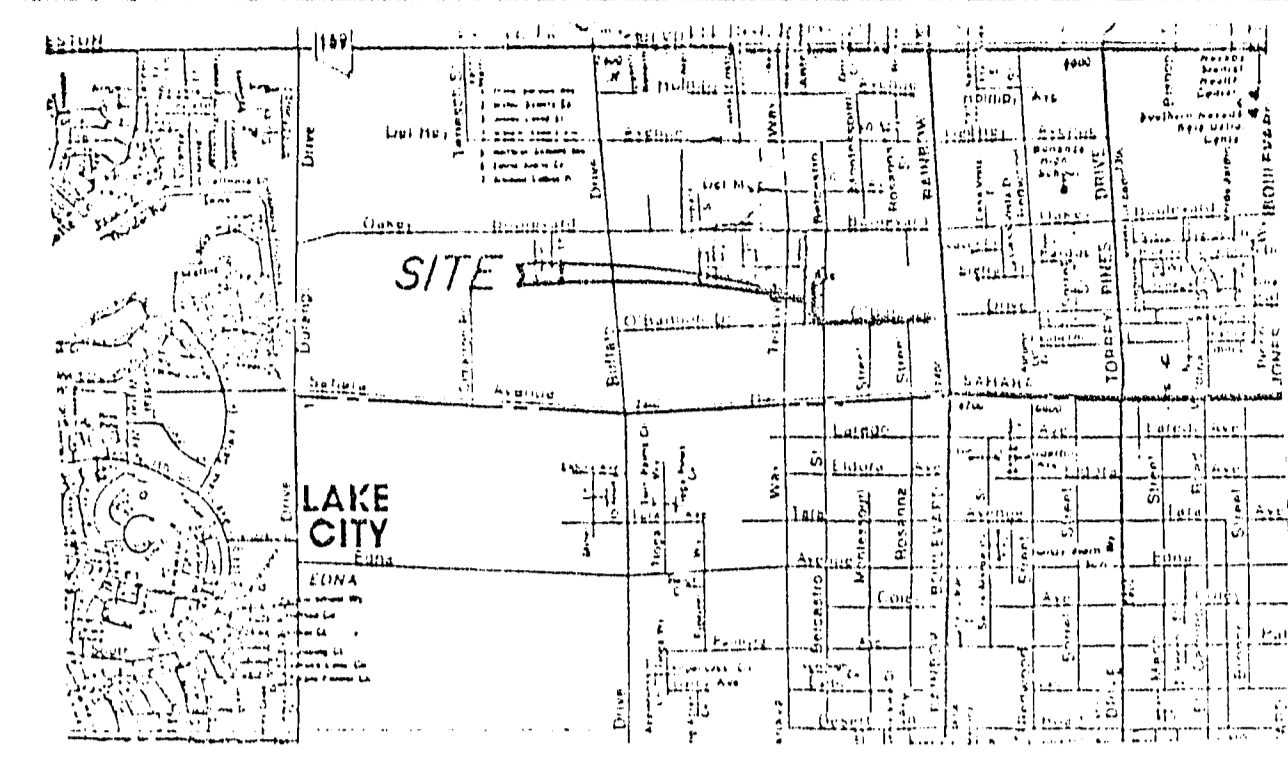


DATE	
BY	
CHECKED	
PLANNED	
ALIGNMENT CHECKED	
RI OF WAY CHECKED	
PLAN	
NOTE BOOK NO.	

DATE	
BY	
CHECKED	
PLANNED	
GRADES CHECKED	
STRUCTURE NOTATIONS CHECKED	
PROFILE	
NOTE BOOK NO.	



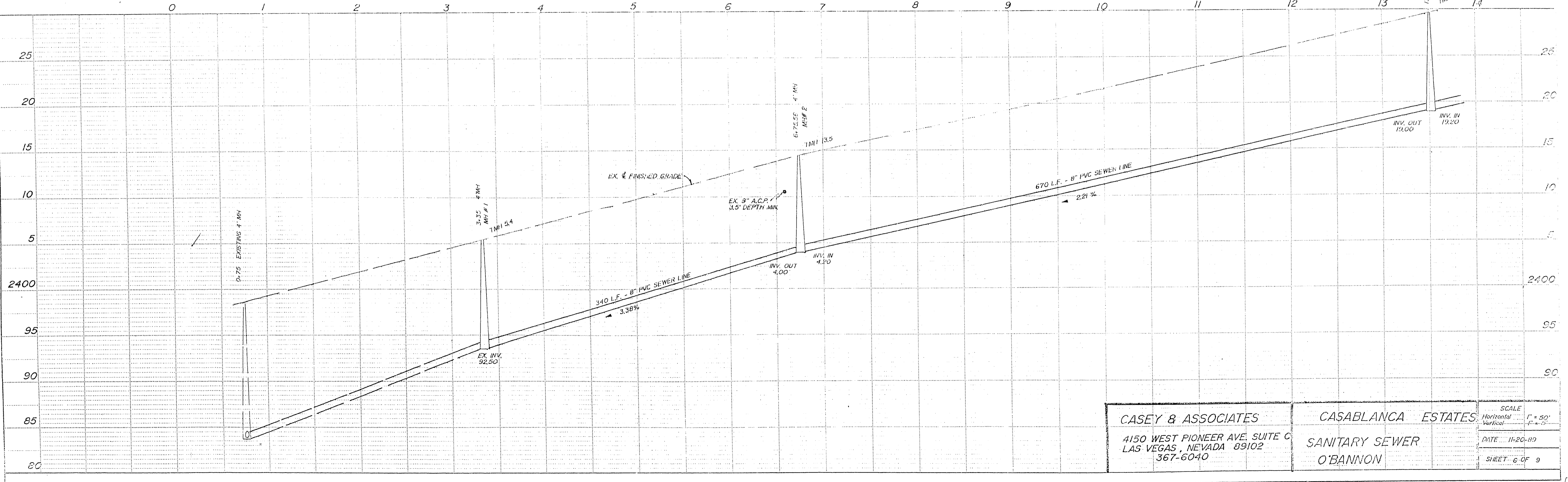
CITY OF LAS VEGAS SEWER NOTES

- All sanitary sewer installations shall conform to the Standard Details and Specifications of the City of Las Vegas, and shall also conform to the Uniform Standard Specifications for Public Works Construction of Offsite Improvements, Clark County Area, latest edition, unless otherwise noted.
- Chisel "5" or "6" in curbs where sewer or gas laterals pass under the curb.
- Polyvinyl (PVC) Sewer Pipe shall meet ASTM D-3034 SDR 35 Specifications, and installed with sand bedding and backfill or Type II Gravel.
- All manholes in paved streets 80 foot right-of-way and larger, shall have concrete collars.
- Tee saddles shall be used to connect sewer laterals to existing main lines up to 12" diameter size. Connections to 15" or larger mains shall require special procedures.
- A sewer main crossing over a water main or less than 18" under a water main must be reinforced concrete encased pipe for a distance not less than ten (10') feet to each side of the centerline of the water main.

QUANTITIES

8" PVC SEWER LINE	2970 L.F.
4" MANHOLES	7 EACH
4" LATERALS	9 EACH

IT IS THE RESPONSIBILITY OF THE CONTRACTOR TO HAVE LOCATIONS OF ALL UNDERGROUND UTILITIES ESTABLISHED, WHETHER SHOWN ON THESE PLANS OR NOT, PRIOR TO BEGINNING.



CASEY & ASSOCIATES 4150 WEST PIONEER AVE. SUITE C LAS VEGAS, NEVADA 89102 367-6040	CASABLANCA ESTATES SANITARY SEWER O'BANNON	SCALE
		Horizontal 1" = 50'
		Vertical 4" = 5'
		DATE 11-20-89
		SHEET 6 OF 9