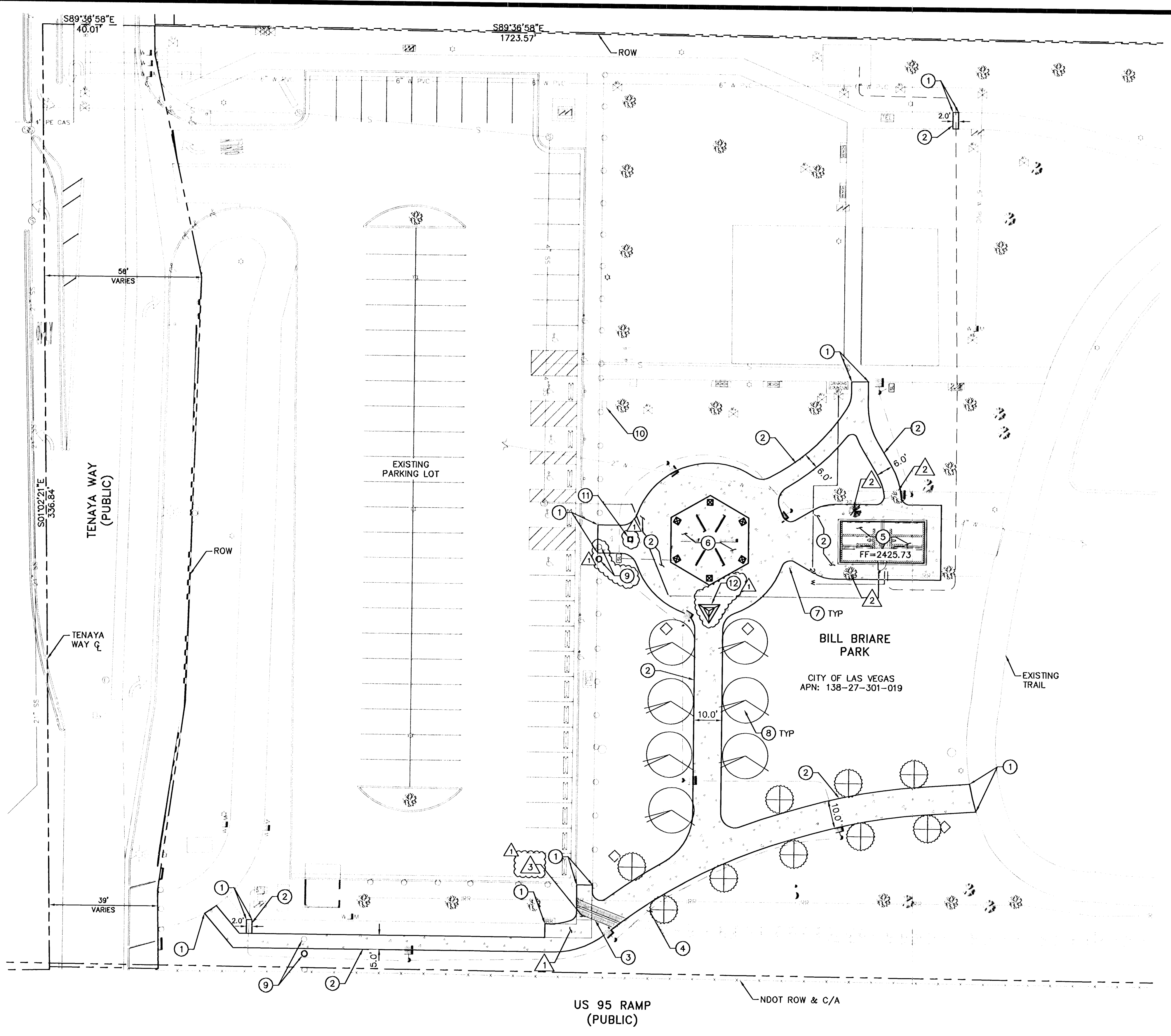


1488  
 Date: April 04, 2013 - 1:05pm / User: Michael.Mooley  
 Path: K:\Users\Public\Drawings\2013\024 - Bonanza Trail Phase 3\CAD\256024-CD-Trail.dwg



**CONSTRUCTION NOTES**

- ① MATCH TO EXISTING GRADE.
- ② CONSTRUCT CONCRETE PATHWAY/SURFACE PER CCAUSD DWG. No. 234. PATHWAY WIDTH PER PLAN. MATERIAL DEPTHS PER DETAIL 1 SHEET DT-01. REFER TO LS-01 FOR CONSTRUCTION JOINT LAYOUT AND EXPOSED AGGREGATE LOCATIONS.
- ③ CONSTRUCT SIDEWALK UNDERDRAIN PER DETAIL 2, SHEET DT-01.
- ④ GRADE MOUND TO MATCH PATHWAY FINISHED GRADE. SEE GRADING SHEET.
- ⑤ PROPOSED RESTROOM FACILITY. REFER TO SHEETS RR PG1.01. TO RR-E1.01
- ⑥ PROPOSED SHADE STRUCTURE. REFER TO SHEETS SS-01 TO SS-03.
- ⑦ PROPOSED TRAIL LIGHT. REFER TO SHEET SL-01.
- ⑧ PROPOSED TREE. REFER TO SHEET LS-01.
- ⑨ RELOCATE METAL POST OUTSIDE PROPOSED SIDEWALK AND ADJUST CHAIN LENGTH.
- ⑩ INSTALL NEW BRONZE PLAQUE PROVIDED BY CITY IN EXISTING CONCRETE MONUMENT.
- ⑪ INSTALL NEW FLUSH BRONZE MEDALLION PROVIDED BY CITY IN 1'-2" CONCRETE SQUARE. 4" DEPTH 4500 PSI TYPE V CONCRETE.
- ⑫ PROPOSED KIOSK STRUCTURE REFER TO SHEET KS-01

**DEMOLITION NOTES**

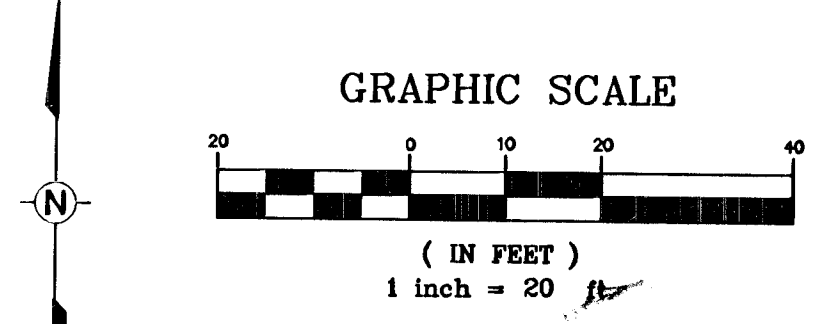
- ① REMOVE EXISTING SIDEWALK.
- ② REMOVE EXISTING TREE/BUSH.
- ③ REMOVE EXISTING SIDEWALK DRAIN.

**LEGEND**

□ PROPOSED CONCRETE SURFACE

**GENERAL NOTES**

- 1. CONTRACTOR SHALL VERIFY EXISTING UTILITY LOCATIONS AND ELEVATIONS PRIOR TO CONSTRUCTION AT NO ADDITIONAL COST.
- 2. CONTRACTOR SHALL BE RESPONSIBLE FOR AVOIDING AND PROTECTING ALL EXISTING UTILITIES.
- 3. PROTECT IN PLACE ANY FENCING NOT IN CONFLICT WITH CONSTRUCTION. REPLACE TO CURRENT CONDITION ANY FENCING DISTURBED DURING CONSTRUCTION.
- 4. SEE SHEET UT-01 FOR UTILITY CONSTRUCTION PLAN.



HH 48065 650.90-1



**SAFETY ALERT**  
 Call Before You Dig  
 Call Before You Overhead



know what's below Call before you dig-702-227-2829  
 UnderGround 1-702-432-5300  
 CLV DRAWING NO. 676-5-3

DEPARTMENT OF PUBLIC WORKS PROJECT: <b>LOT 2: BILL BRIARE PARK TRAILHEAD</b>	SHEET: <b>CONSTRUCTION AND DEMOLITION PLAN</b>	DRAWN BY: SR DESIGNED BY: MSM CHECKED BY: MDC DATE: April 2013	SCALE (H): 1"=20' SCALE (V): N/A	RELOCATE BOLLARD INSTEAD OF REMOVE ADDED KIOSK AND MOVED MONUMENT REVISION BY: [ ] DATE: [ ]
		<p><b>Kimley-Horn and Associates, Inc.</b>          Engineering, Planning, and Environmental Consultants          6871 Las Vegas Boulevard South, Suite 320          Las Vegas, Nevada 89119          TELE No. (702) 862-3600</p>		