

FOR EXISTING ROUGH GRADE DETAILS REFER TO THE FOLLOWING IMPROVEMENT SET: "VILLAGE 23A ROUGH GRADING, 2002" SUBMITTED BY G.C. WALLACE, INC CLV # 107-V3674

FOR EXISTING 24" WATER SEE: "VILLAGE 23B 3550, ZONE 24" WATERLINE - PHASE 2" SUBMITTED BY G.C. WALLACE CLV #565-405-PH2

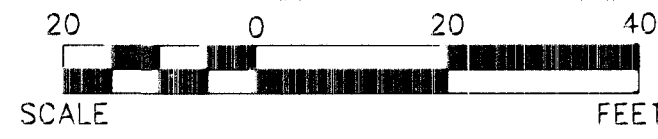
FOR EXISTING 12" WATER REFER TO THE FOLLOWING IMPROVEMENT SET: "VILLAGE 23A - DESERT FOOTHILLS DRIVE IMPROVEMENTS" SUBMITTED BY G.C. WALLACE, INC CLV # 107-V3606

FOR EXISTING STORM DRAIN IMPROVEMENTS, REFER TO THE FOLLOWING IMPROVEMENT SET: "VILLAGE 23A/23B ALTA DRIVE RCB REGIONAL DRAINAGE IMPROVEMENTS" SUBMITTED BY G.C. WALLACE, INC CLV # 327V260

FOR EXISTING ROAD AND UNDERGROUND UTILITY DETAILS REFER TO THE FOLLOWING IMPROVEMENT SETS: "VILLAGE 23A - DESERT FOOTHILLS DR IMPROVEMENTS" SUBMITTED BY G.C. WALLACE, INC CLV #107-V3805 "VILLAGE 23B - DESERT FOOTHILLS DR IMPROVEMENTS" SUBMITTED BY G.C. WALLACE, INC CLV #47649

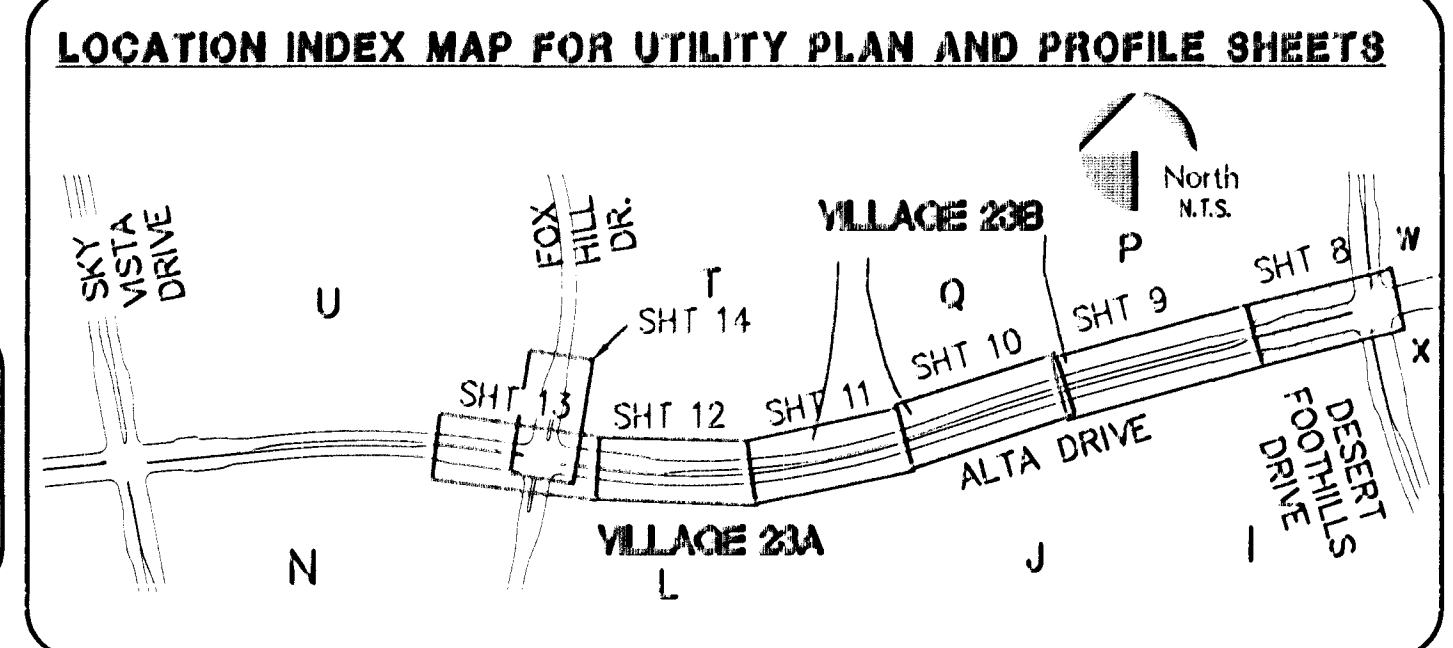
FOR EXISTING ROAD AND UNDERGROUND UTILITY DETAILS REFER TO THE FOLLOWING IMPROVEMENT SET: "THE VISTAS - VILLAGE 20 - UNIT 3 IMPROVEMENTS, 2001" SUBMITTED BY G.C. WALLACE CLV # 107-V3469

SID #810 PROJECTS 6A, 6B & 6C SID #809 PROJECTS 8A, 8B & 8C ALTA DRIVE (PUBLIC)



NOTE
THIS SET OF DRAWINGS IS BASED UPON NAVD 88 DATUM. PREVIOUS DRAWINGS MAY BE BASED ON OTHER DATUM. CARE SHOULD BE OBSERVED WHEN UTILIZING THIS SET OF DRAWINGS.

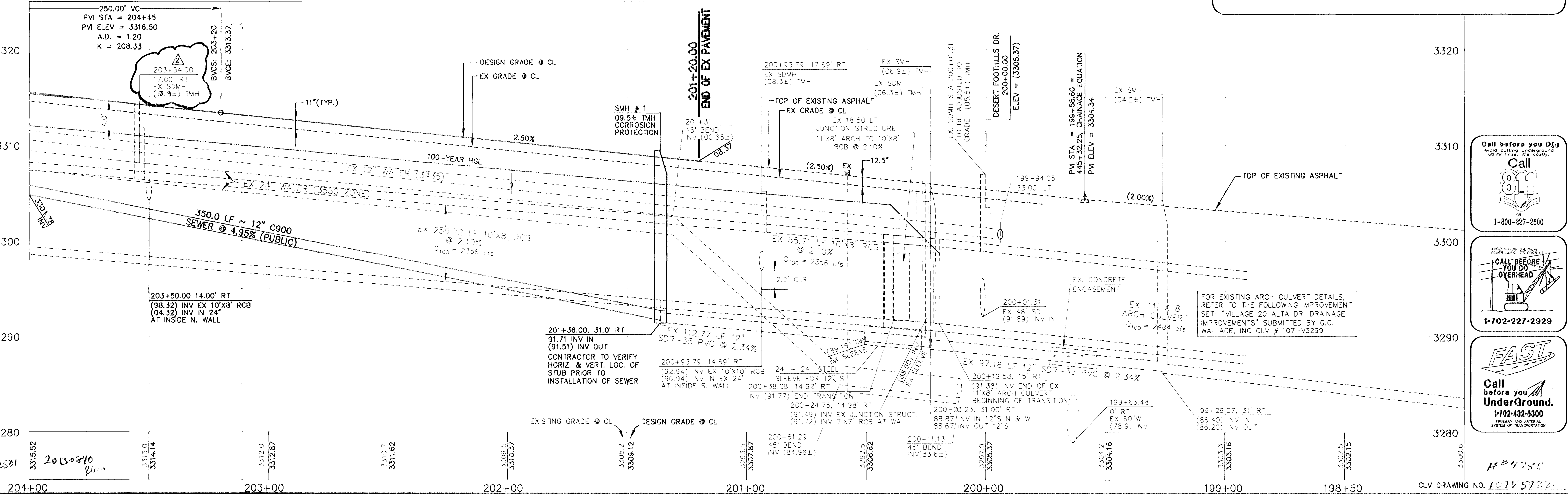
APPROVED FOR CONSTRUCTION
[Signature]
LAS VEGAS VALLEY WATER DISTRICT ENGINEERING SERVICES
MANAGER
PROJECT NO. 121343 DATE: 02/01/15



BENCHMARK	
DESCRIPTION	NAVD 88 DATUM
RIVET AND PLATE IN TOP OF CURB - NORTH EAST CORNER OF DESERT FOOTHILLS AND ALTA DRIVE CLV BM NO. 5LV09 34NE6	3304.45 1007.197 (FEET) (METERS)

BASIS OF BEARINGS	
NORTH 89°45'05" EAST BEING THE SOUTH LINE OF THE SOUTHWEST QUARTER (SW 1/4) OF SECTION 36, TOWNSHIP 20 SOUTH, RANGE 59 EAST, M.D.M., AS SHOWN BY MAP ON FILE IN FILE 91 PAGE 28 OF PARCEL MAPS IN THE CLARK COUNTY RECORDER'S OFFICE, CLARK COUNTY, NEVADA	

SCALE: HORIZ. 1" = 20'
VERT. 1" = 5'
REFER TO SHEET 2 FOR CONSTRUCTION NOTES



Call before you Dig
Avoid cutting underground utility lines. It's the easy way.

Call 811
1-800-227-2600

CALL BEFORE YOU DO OVERHEAD
1-702-227-2929

FAST
Call before you UnderGround.
1-702-432-5300
FIREARM AND AERIAL SYSTEMS OF MANUFACTURE

G.C. WALLACE COMPANIES
ENGINEERS | PLANNERS | SURVEYORS
1555 S. RAINBOW BOULEVARD - LAS VEGAS, NV 89146
TEL: 702.264.2300 - FAX: 702.264.2399 - G.C.WALLACE@COM

THE HOWARD HUGHES COMPANY, LLC
VILLAGE 23A/23B ALTA DRIVE IMPROVEMENTS
ALTA DRIVE UTILITY PLAN AND PROFILE
STA. 201+20 TO STA. 204+00