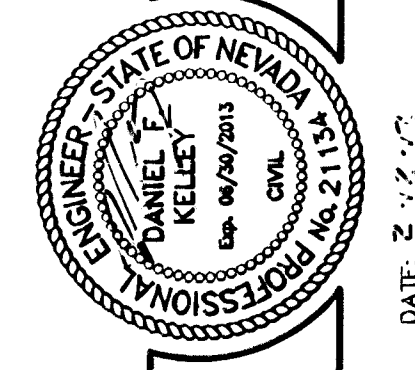
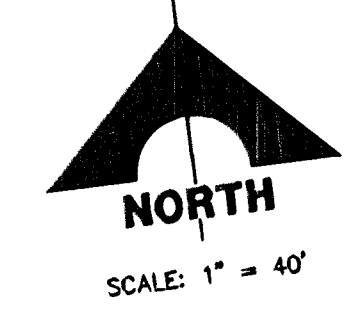
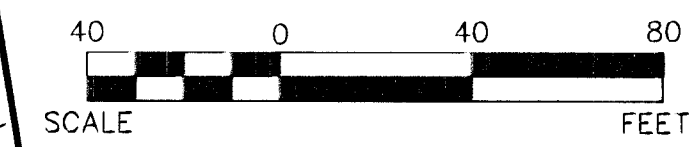


SID # PROJECTS 7A, 7B & 7C  
SID #809 PROJECTS 11A, 11B & 11C

SID # PROJECTS 6A, 6B & 6C  
SID #809 PROJECTS 8A, 8B & 8C



VILLAGE 23B  
PARCEL OPQR  
APN 137-22-000-015  
THE HOWARD HUGHES CORPORATION

VILLAGE 23B  
PARCEL WX  
APN 137-22-000-015  
THE HOWARD HUGHES CORPORATION

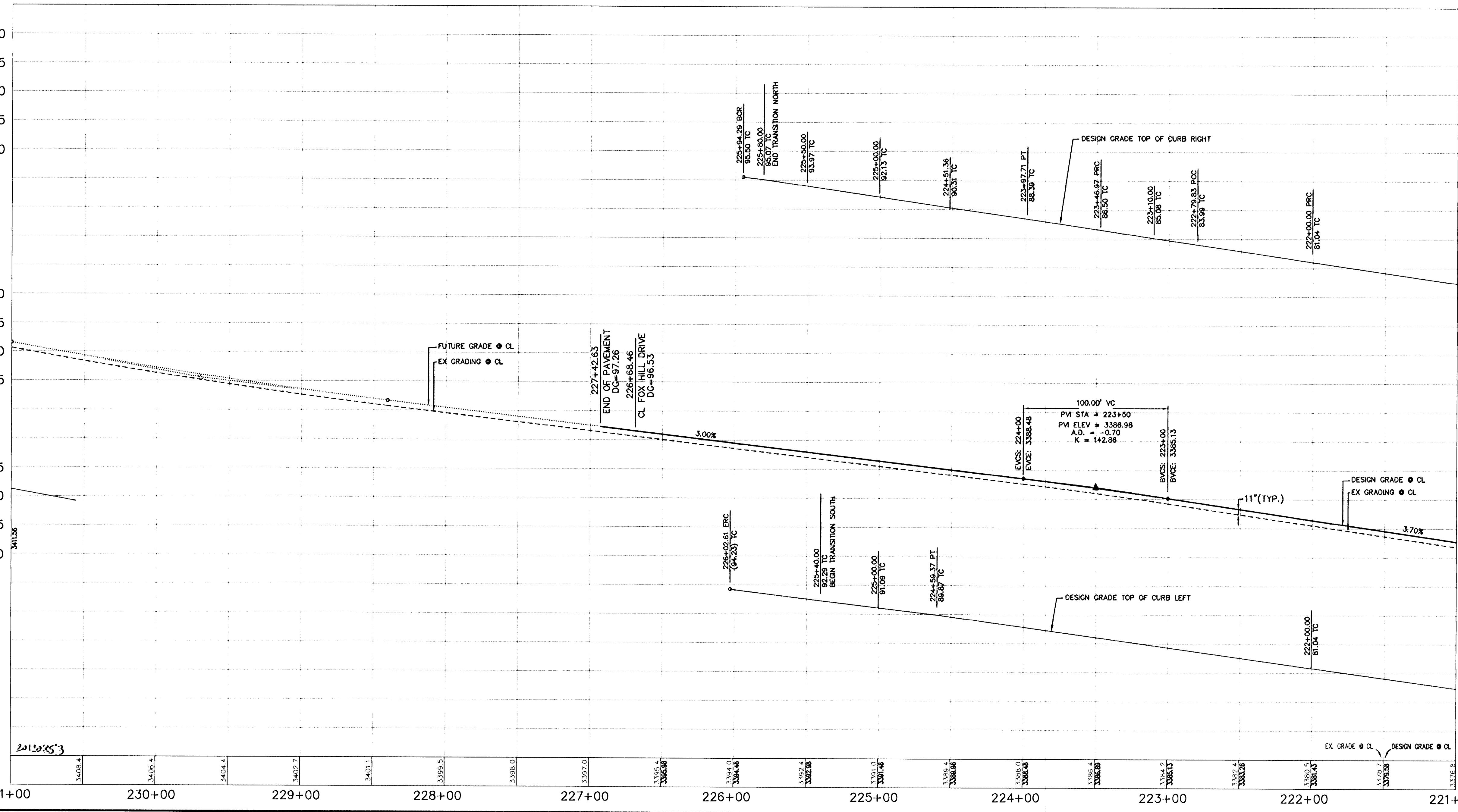
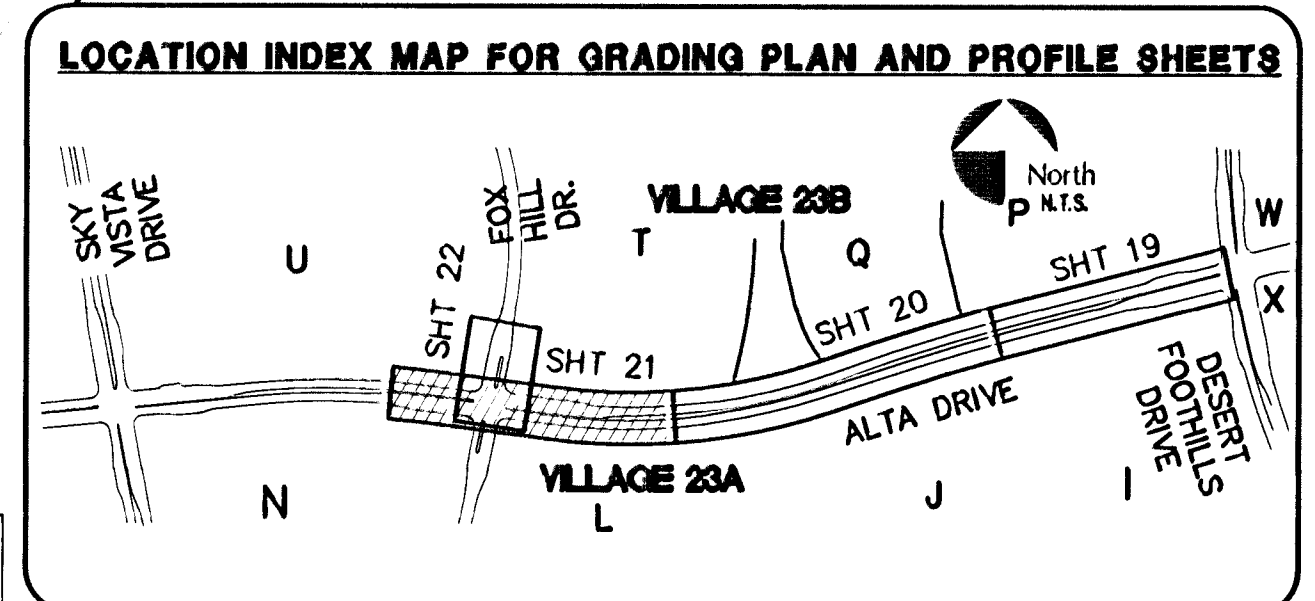
VILLAGE 23A  
PARCEL N  
APN 137-34-210-001  
THE HOWARD HUGHES CORPORATION

VILLAGE 23A  
PARCEL L  
APN 137-34-210-002  
THE HOWARD HUGHES CORPORATION

### ALTA DRIVE (PUBLIC)

SCALE: HORIZ. 1" = 40'  
VERT. 1" = 4'

REFER TO SHEET 2 FOR CONSTRUCTION NOTES



Call before you Dig  
Call 811  
1-800-227-2600

AVOID HITTING OVERHEAD POWER LINES. IT'S COSTLY. CALL BEFORE YOU DO OVERHEAD.  
1-702-227-2929

FAST  
Call before you UnderGround.  
1-702-432-6300

BENCHMARK		
DESCRIPTION	NAVD 88 DATUM	NAVD 88 DATUM
RIVET AND PLATE IN TOP OF CURB @ NORTHEAST CORNER OF DESERT FOOTHILLS AND ALTA DRIVE	3304.45 (FEET)	1007.197 (METERS)
CLV BM No. 5LV09 34NE6		

**BASIS OF BEARINGS**  
NORTH 89°45'05" EAST BEING THE SOUTH LINE OF THE SOUTHWEST QUARTER (SW 1/4) OF SECTION 35, TOWNSHIP 30 SOUTH, RANGE 59 EAST, M.D.M., AS SHOWN BY MAP ON FILE IN FILE 91, PAGE 28 OF PARCEL MAPS IN THE CLARK COUNTY RECORDER'S OFFICE, CLARK COUNTY, NEVADA.

**NOTE**  
THIS SET OF DRAWINGS IS BASED UPON NAVD 88 DATUM. PREVIOUS DRAWINGS MAY BE BASED ON OTHER DATUM. CARE SHOULD BE OBSERVED WHEN UTILIZING THIS SET OF DRAWINGS.

DESIGN	DATE
CBW/GTP	
DRAWN	GTP
CHECK	BAH
ISSUE DATE	
ISSUE EDITOR	
PILOT DATE	02-12-13
PILOT TIME	16:04:54

G.C. WALLACE COMPANIES  
ENGINEERS | PLANNERS | SURVEYORS  
1535 S. RAINBOW BOULEVARD - LAS VEGAS, NV 89146  
702.432.6300 F702.432.6399 GCWALLACE.COM

THE HOWARD HUGHES COMPANY, LLC  
VILLAGE 23A/23B ALTA DRIVE IMPROVEMENTS  
ALTA DRIVE PLAN AND PROFILE  
STA. 221+00 TO STA. 231+00

CLV DRAWING NO. 10715722  
H#47511