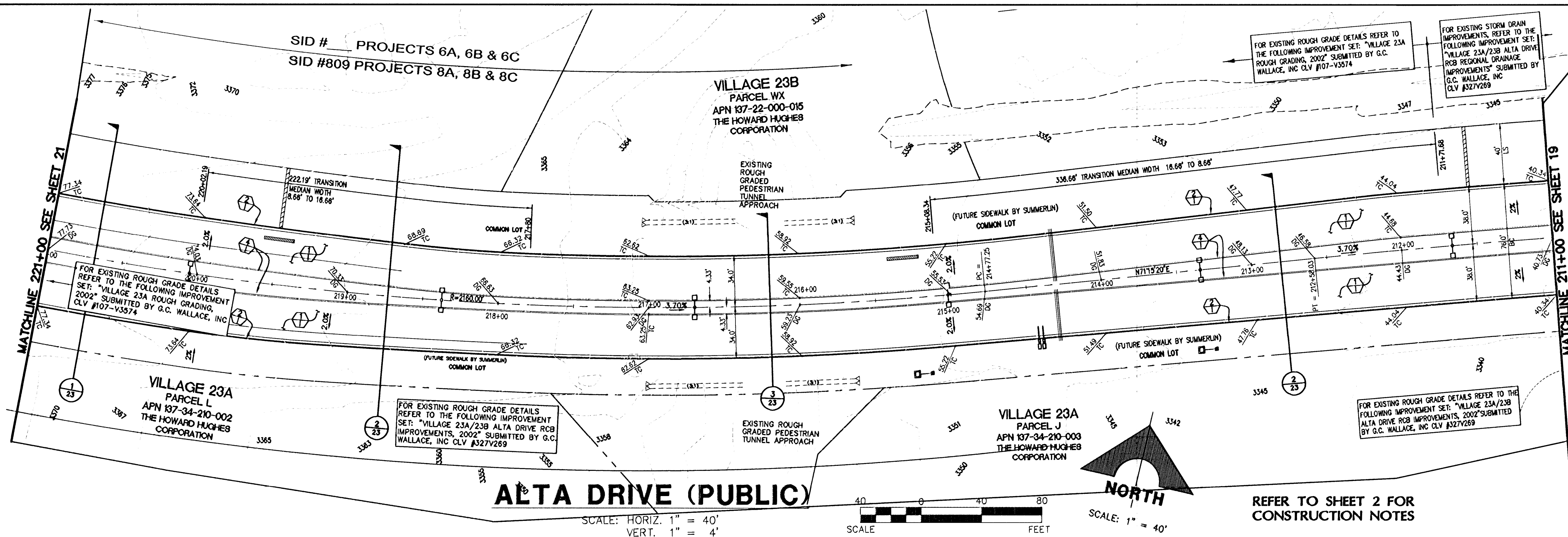
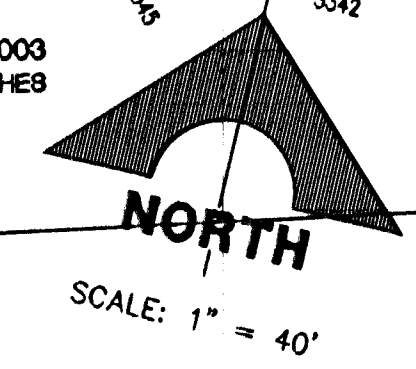
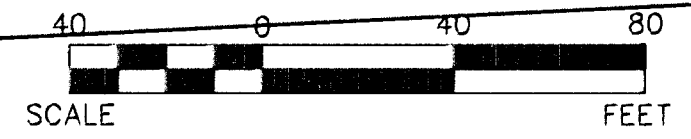


DATE: 2-12-17

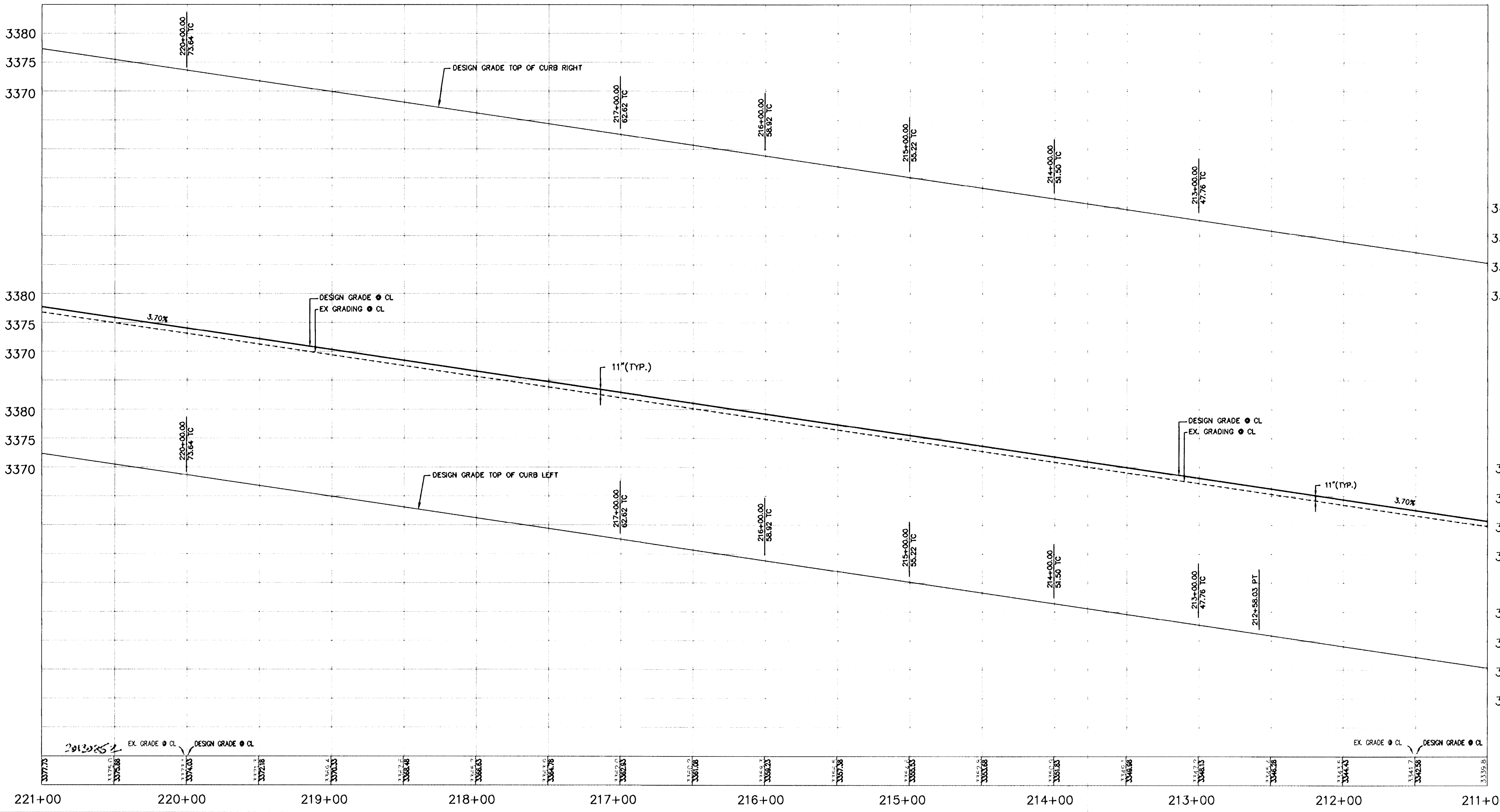
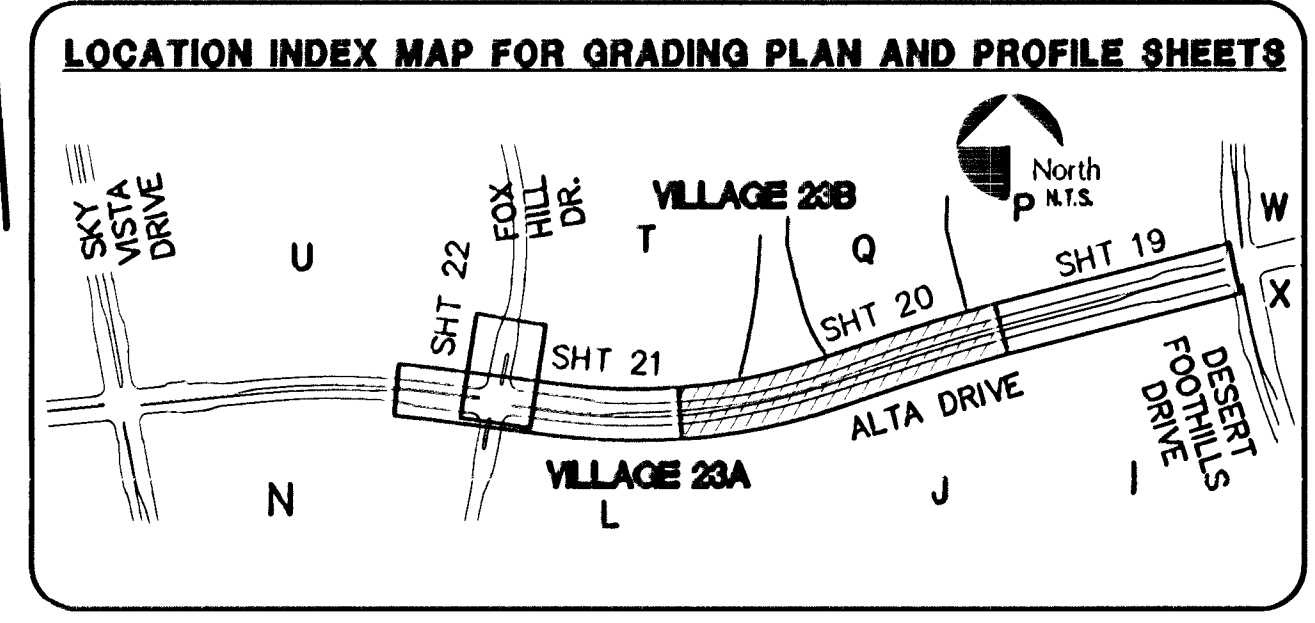


**ALTA DRIVE (PUBLIC)**

SCALE: HORIZ. 1" = 40'  
VERT. 1" = 4'



REFER TO SHEET 2 FOR CONSTRUCTION NOTES



**Call before you Dig**  
Call 811  
1-800-227-2800

**CALL BEFORE YOU GO OVERHEAD**  
1-702-227-2929

**FAST**  
Call before you Under Ground.  
1-702-432-6300

**BENCHMARK**

DESCRIPTION	NAVD 88 DATUM	NAVD 88 DATUM
RIVET AND PLATE IN TOP OF CURB @ NORTHEAST CORNER OF DESERT FOOTHILLS AND ALTA DRIVE	3304.45 (FEET)	1007.197 (METERS)
CLV BM No. 5LV09 34NE6		

**BASIS OF BEARINGS**  
NORTH 89°45'05" EAST BEING THE SOUTH LINE OF THE SOUTHWEST QUARTER (SW 1/4) OF SECTION 35, TOWNSHIP 20 SOUTH, RANGE 59 EAST, M.D.M., AS SHOWN BY MAP ON FILE IN FILE 91, PAGE 28 OF PARCEL MAPS IN THE CLARK COUNTY RECORDER'S OFFICE, CLARK COUNTY, NEVADA.

**NOTE**  
THIS SET OF DRAWINGS IS BASED UPON NAVD 88 DATUM. PREVIOUS DRAWINGS MAY BE BASED ON OTHER DATUM. CARE SHOULD BE OBSERVED WHEN UTILIZING THIS SET OF DRAWINGS.

NO.	DESCRIPTION	DATE	BY	APP'D

**G.C. WALLACE COMPANIES**  
ENGINEERS | PLANNERS | SURVEYORS  
1555 S. RAINBOW BOULEVARD - LAS VEGAS, NV 89146  
T: 702.264.2000 - F: 702.384.2299 - GCWALLACE.COM

**THE HOWARD HUGHES COMPANY, LLC**  
VILLAGE 23A/23B ALTA DRIVE IMPROVEMENTS  
ALTA DRIVE PLAN AND PROFILE  
STA. 211+00 TO STA. 221+00

SHEET **20**  
OF 28 SHEETS

CLV DRAWING NO. 107V5222

1147511

02-23-17.dwg (02/28/17)