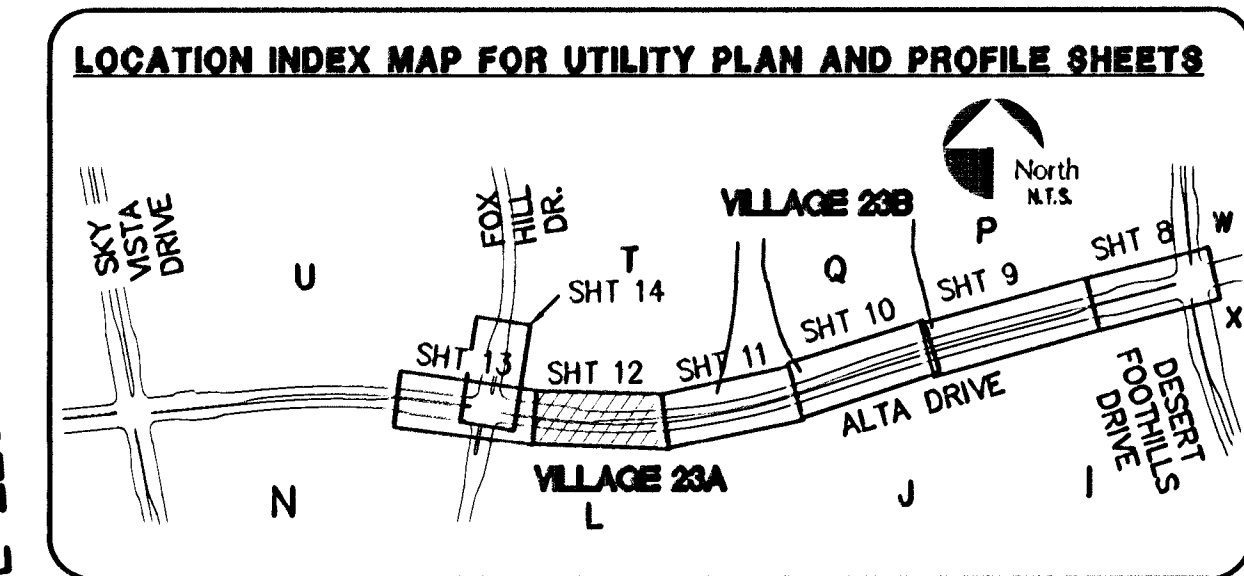


SCALE: 1" = 20'
20 0 20 40
SCALE FEET



PER 19.08 & 19.12 ALL ABOVE-GROUND UTILITY BOXES SHALL BE FULLY SCREENED FROM ALL RIGHTS-OF-WAY

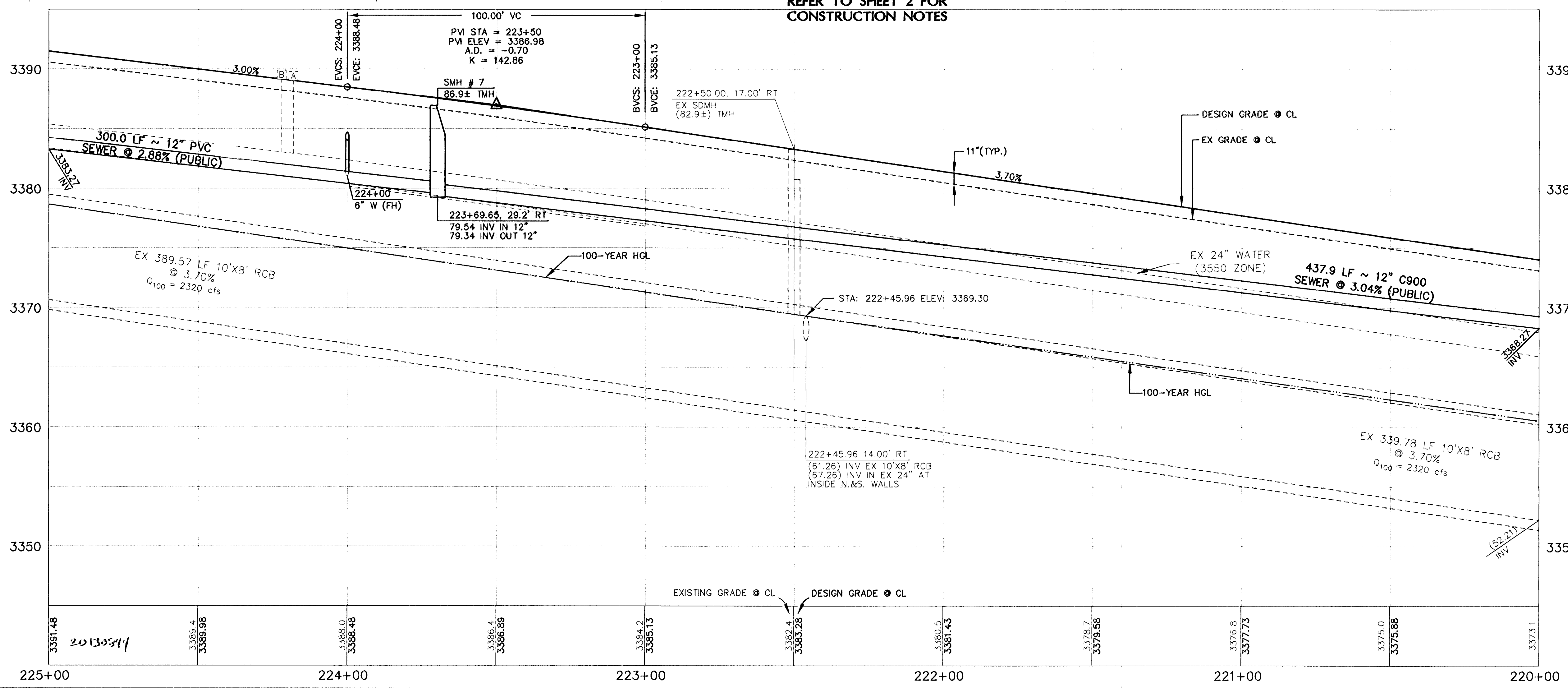
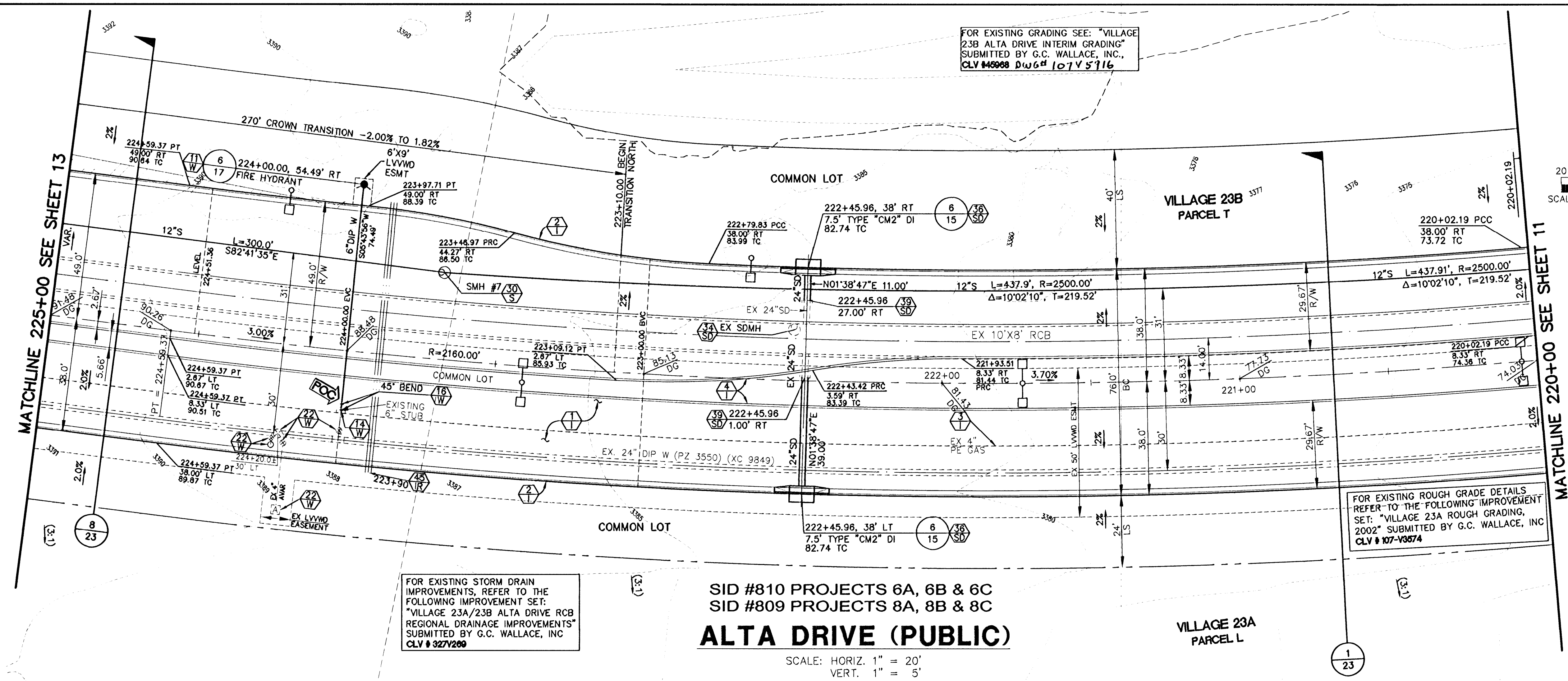
FOR EXISTING ROUGH GRADE DETAILS REFER TO THE FOLLOWING IMPROVEMENT SET: "VILLAGE 23A ROUGH GRADING, 2002" SUBMITTED BY G.C. WALLACE, INC CLV # 107-V3674

FOR EXISTING GRADING SEE: "VILLAGE 23B ALTA DRIVE INTERIM GRADING" SUBMITTED BY G.C. WALLACE, INC., CLV #46088 DWG# 107V5716

FOR EXISTING STORM DRAIN IMPROVEMENTS, REFER TO THE FOLLOWING IMPROVEMENT SET: "VILLAGE 23A/23B ALTA DRIVE RCB REGIONAL DRAINAGE IMPROVEMENTS" SUBMITTED BY G.C. WALLACE, INC CLV # 327V299

SID #810 PROJECTS 6A, 6B & 6C SID #809 PROJECTS 8A, 8B & 8C ALTA DRIVE (PUBLIC)

SCALE: HORIZ. 1" = 20'
VERT. 1" = 5'
REFER TO SHEET 2 FOR CONSTRUCTION NOTES



Call before you Dig
Call 811
1-800-227-2600

CALL BEFORE YOU DIG OVERHEAD
1-702-227-2929

FAST
Call before you UnderGround.
1-702-432-6300

BENCHMARK		
DESCRIPTION	NAVD 88 DATUM	NAVD 88 DATUM
RIVET AND PLATE IN TOP OF CURB - NORTHEAST CORNER OF DESERT FOOTHILLS AND ALTA DRIVE	3304.45 (FEET)	1007.197 (METERS)
CLV BM No. 5LV09 34NE5		

BASIS OF BEARINGS
NORTH 89°45'05" EAST BEING THE SOUTH LINE OF THE SOUTHWEST QUARTER (SW 1/4) OF SECTION 35, TOWNSHIP 20 SOUTH, RANGE 59 EAST, M.D.M., AS SHOWN BY MAP ON FILE IN FILE 91, PAGE 28 OF PARCEL MAPS IN THE CLARK COUNTY RECORDER'S OFFICE, CLARK COUNTY, NEVADA

NOTE
THIS SET OF DRAWINGS IS BASED UPON NAVD 88 DATUM. PREVIOUS DRAWINGS MAY BE BASED ON OTHER DATUM. CARE SHOULD BE OBSERVED WHEN UTILIZING THIS SET OF DRAWINGS.

APPROVED FOR CONSTRUCTION
Doa-Heade
LAS VEGAS VALLEY WATER DISTRICT ENGINEERING SERVICES MANAGER
PROJECT NO. 121343 DATE: 02/22/13

G.C. WALLACE COMPANIES
ENGINEERS | PLANNERS | SURVEYORS
1535 S. RAINBOW BOULEVARD - LAS VEGAS, NV 89146
T: 702.884.2300 F: 702.884.2299 GCWALLACE.COM

THE HOWARD HUGHES COMPANY, LLC
VILLAGE 23A/23B ALTA DRIVE IMPROVEMENTS
ALTA DRIVE UTILITY PLAN AND PROFILE
STA. 220+00 TO STA. 225+00