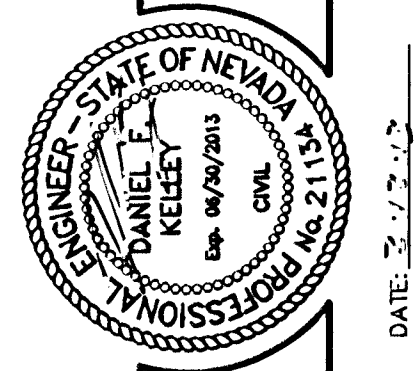
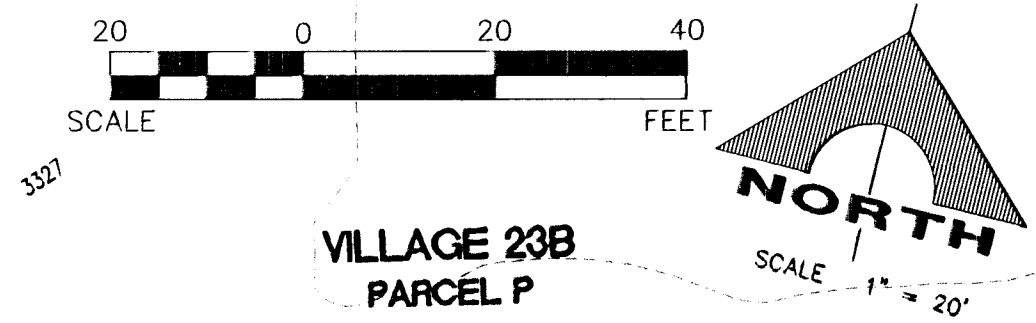


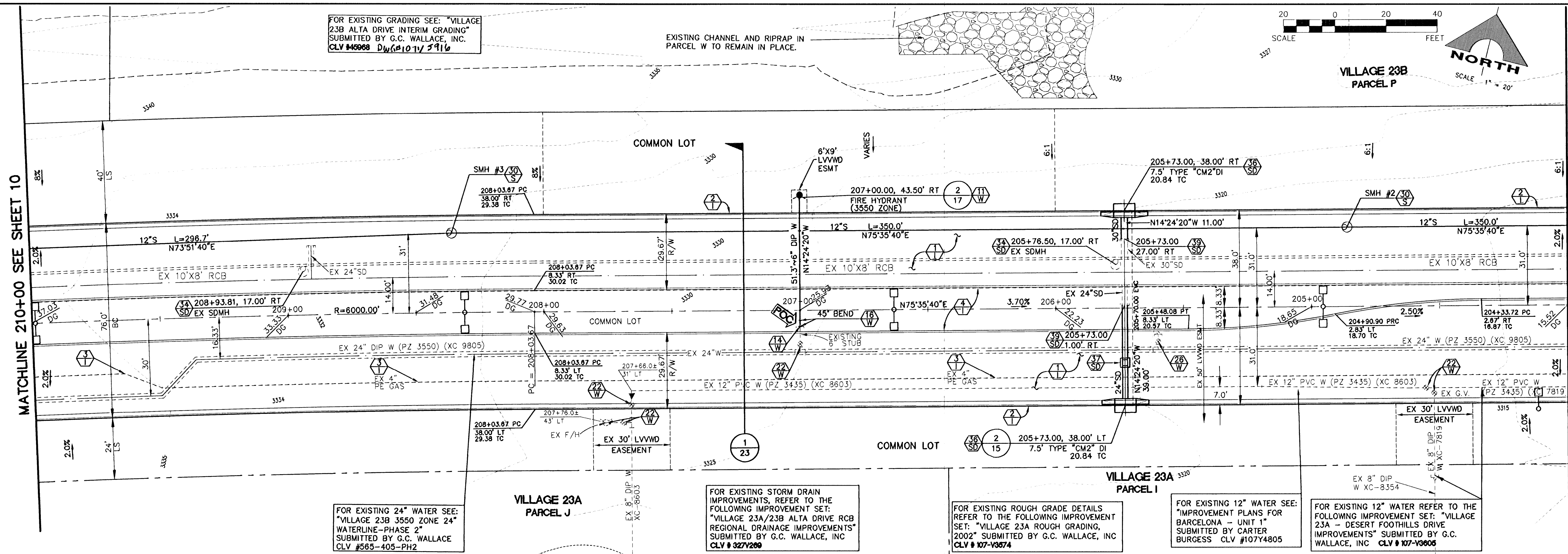
FOR EXISTING GRADING SEE: "VILLAGE 23B ALTA DRIVE INTERIM GRADING" SUBMITTED BY G.C. WALLACE, INC. CLV #46968 DWG#101V 2916

EXISTING CHANNEL AND RIPRAP IN PARCEL W TO REMAIN IN PLACE.



MATCHLINE 210+00 SEE SHEET 10

MATCHLINE 204+00 SEE SHEET 8



FOR EXISTING 24" WATER SEE: "VILLAGE 23B 3550 ZONE 24" WATERLINE-PHASE 2" SUBMITTED BY G.C. WALLACE CLV #565-405-PH2

VILLAGE 23A PARCEL J

FOR EXISTING STORM DRAIN IMPROVEMENTS, REFER TO THE FOLLOWING IMPROVEMENT SET: "VILLAGE 23A/23B ALTA DRIVE RCB REGIONAL DRAINAGE IMPROVEMENTS" SUBMITTED BY G.C. WALLACE, INC CLV # 327V269

FOR EXISTING ROUGH GRADE DETAILS REFER TO THE FOLLOWING IMPROVEMENT SET: "VILLAGE 23A ROUGH GRADING, 2002" SUBMITTED BY G.C. WALLACE, INC CLV # 107-V6674

FOR EXISTING 12" WATER SEE: "IMPROVEMENT PLANS FOR BARCELONA - UNIT 1" SUBMITTED BY CARTER BURGESS CLV #107V4805

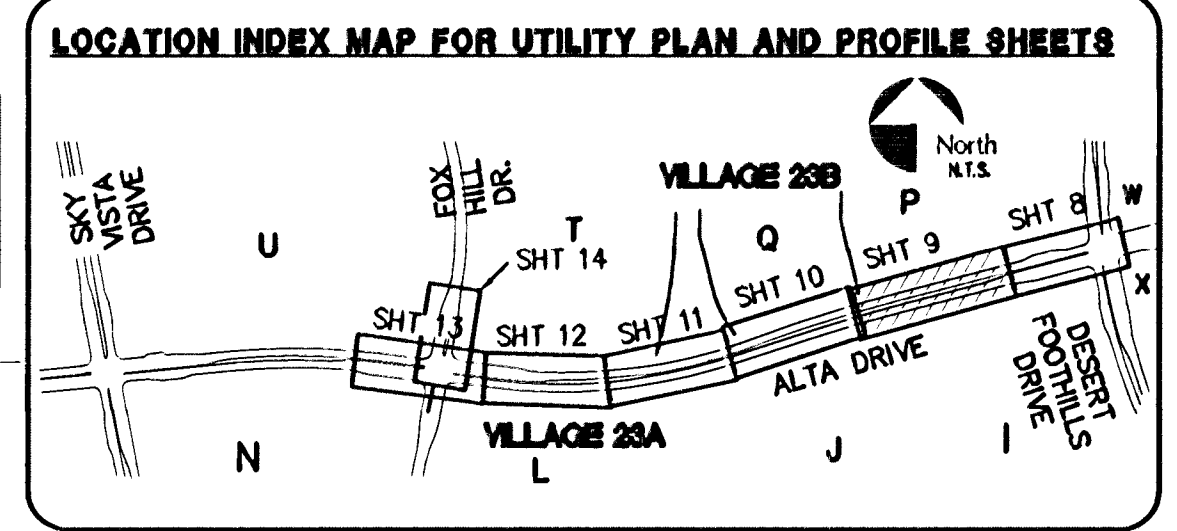
FOR EXISTING 12" WATER REFER TO THE FOLLOWING IMPROVEMENT SET: "VILLAGE 23A - DESERT FOOTHILLS DRIVE IMPROVEMENTS" SUBMITTED BY G.C. WALLACE, INC CLV # 107-V3606

**SID #810 PROJECTS 6A, 6B & 6C
SID #809 PROJECTS 8A, 8B & 8C
ALTA DRIVE (PUBLIC)**

SCALE: HORIZ. 1" = 20'
VERT. 1" = 5'

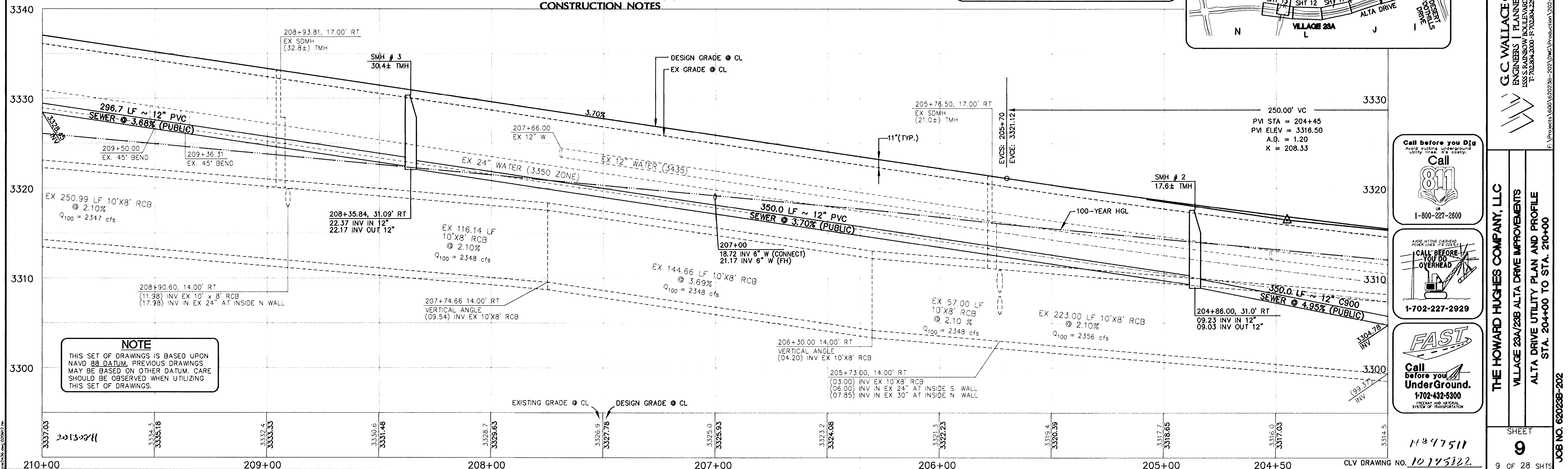
REFER TO SHEET 2 FOR CONSTRUCTION NOTES

APPROVED FOR CONSTRUCTION
David Leade
LAS VEGAS VALLEY WATER DISTRICT ENGINEERING SERVICES MANAGER
PROJECT NO. 121343 DATE: 02/27/13



BENCHMARK		
DESCRIPTION	NAVD 88 DATUM (FEET)	NAVD 88 DATUM (METERS)
RIVET AND PLATE IN TOP OF CURB NORTHEAST CORNER OF DESERT FOOTHILLS AND ALTA DRIVE CLV BM No. 5LV09 34NE8	3304.45	1007.197

BASIS OF BEARINGS
NORTH 89°45'05" EAST BEING THE SOUTH LINE OF THE SOUTHWEST QUARTER (SW 1/4) OF SECTION 35, TOWNSHIP 20 SOUTH, RANGE 59 EAST, M.D.M. AS SHOWN BY MAP ON FILE IN FILE 91, PAGE 28 OF PARCEL MAPS IN THE CLARK COUNTY RECORDER'S OFFICE, CLARK COUNTY, NEVADA



NOTE
THIS SET OF DRAWINGS IS BASED UPON NAVD 88 DATUM. PREVIOUS DRAWINGS MAY BE BASED ON OTHER DATUM. CARE SHOULD BE OBSERVED WHEN UTILIZING THIS SET OF DRAWINGS.

Call before you Dig
Avoid cutting underground utility lines. It's costly.
811
1-800-227-2600

CALL BEFORE YOU GO OVERHEAD
1-702-227-2929

FAST
Call before you UnderGround.
1-702-432-5300
FREWAY AND ARTERIAL SYSTEMS OF TRANSPORTATION

G.C. WALLACE COMPANIES
ENGINEERS | PLANNERS | SURVEYORS
1750 W. WASHINGTON AVE. SUITE 200
LAS VEGAS, NV 89102
TEL: 702.886.3000 FAX: 702.886.2529 GCWALLACE@GMAIL.COM

THE HOWARD HUGHES COMPANY, LLC
VILLAGE 23A/23B ALTA DRIVE IMPROVEMENTS
ALTA DRIVE UTILITY PLAN AND PROFILE
STA. 204+00 TO STA. 210+00

1147511
CLV DRAWING NO. 10145822