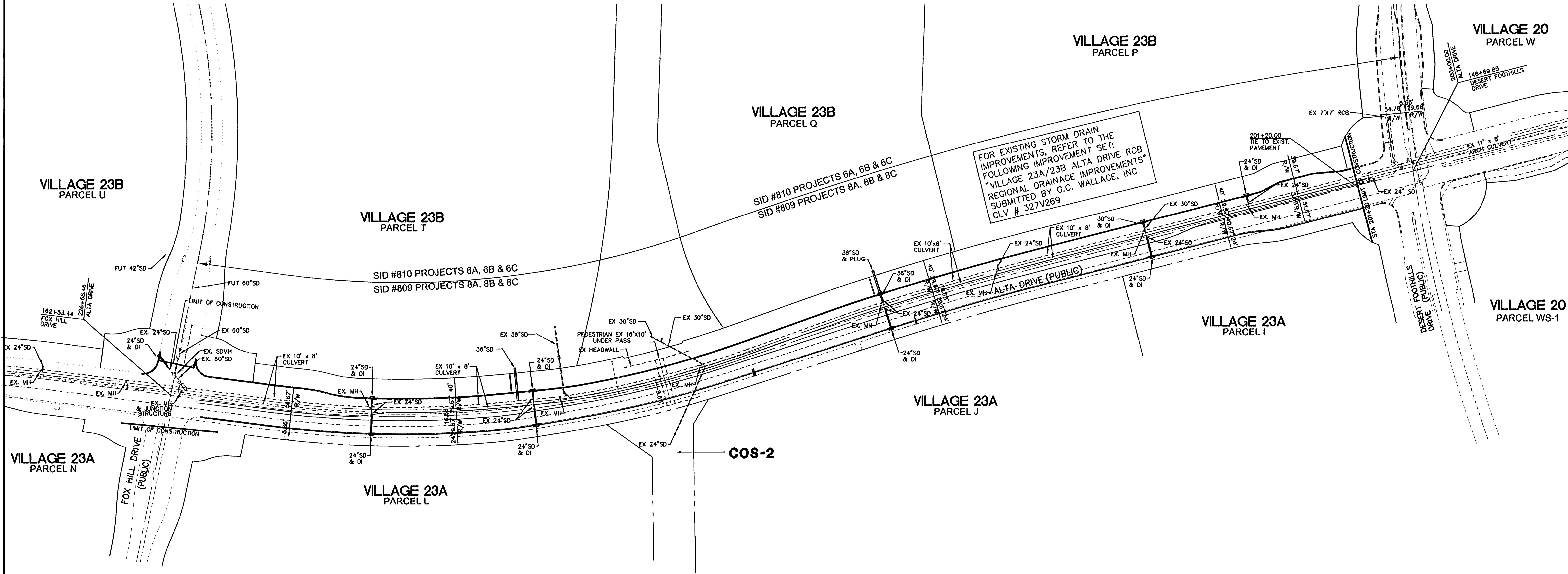
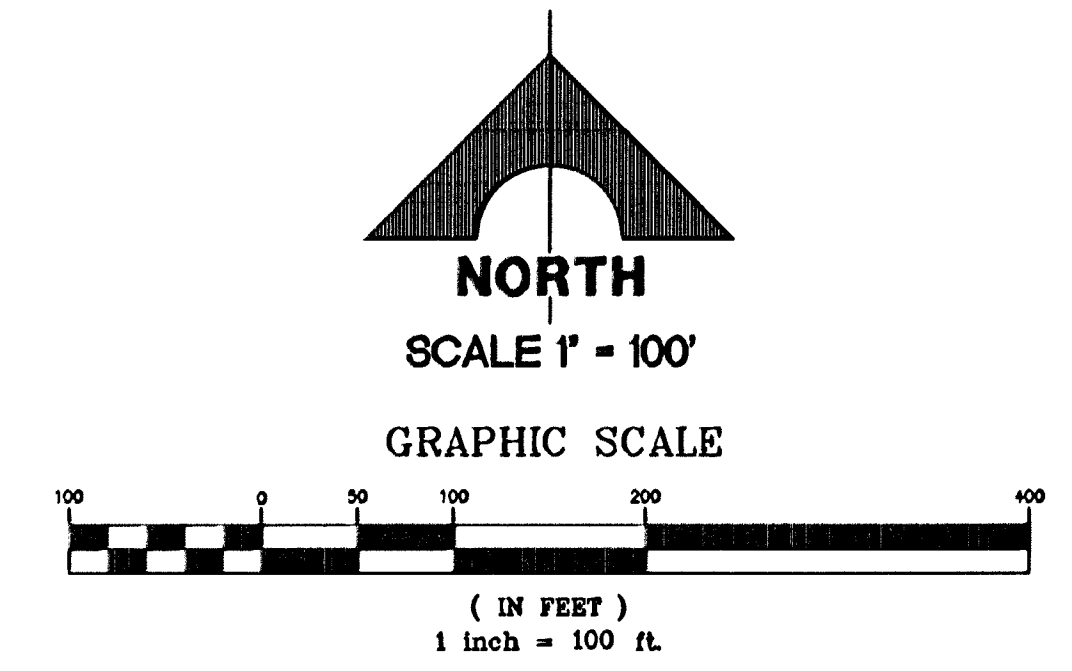


DATE: 2/2/23



FOR EXISTING STORM DRAIN IMPROVEMENTS, REFER TO THE FOLLOWING IMPROVEMENT SET: "VILLAGE 23A/23B ALTA DRIVE RCB REGIONAL DRAINAGE IMPROVEMENTS" SUBMITTED BY G.C. WALLACE, INC. CLV # 327V269

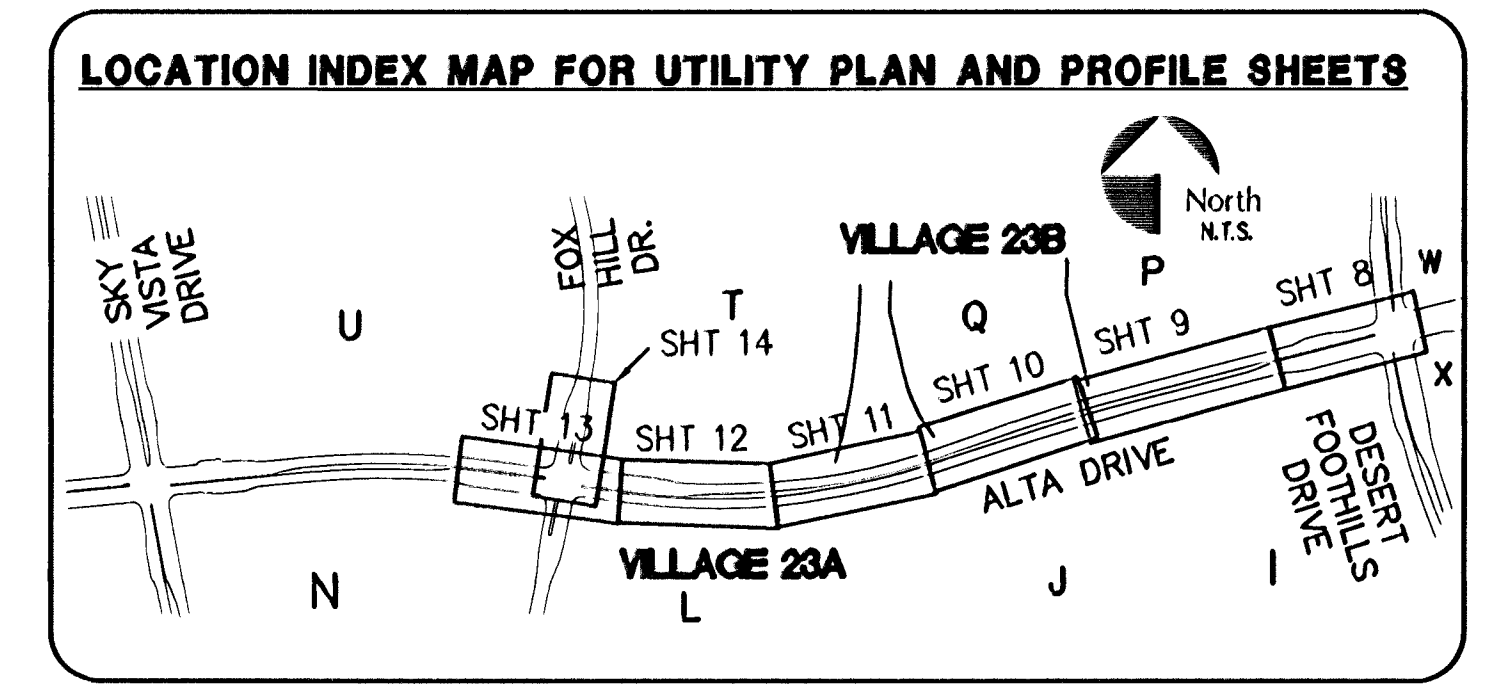
SID #810 PROJECTS 6A, 6B & 6C  
SID #809 PROJECTS 8A, 8B & 8C

SID #810 PROJECTS 6A, 6B & 6C  
SID #809 PROJECTS 8A, 8B & 8C

**STORM DRAIN ESTIMATED QUANTITIES (PUBLIC)**

24" STORM DRAIN CLASS III RCP	215 LF
30" STORM DRAIN CLASS III RCP	11 LF
36" STORM DRAIN CLASS III RCP	150 LF
TYPE "CM2" DROP INLET ~ 10.0'	1 EA
TYPE "CM2" DROP INLET ~ 7.5'	8 EA
TYPE "CM2" DROP INLET ~ 5.0'	1 EA

QUANTITIES ARE ESTIMATED ONLY. CONTRACTOR IS TO VERIFY DURING BIDDING PROCESS.



**G.C. WALLACE COMPANIES**  
ENGINEERS | PLANNERS | SURVEYORS  
1555 S. RAINBOW BOULEVARD - LAS VEGAS, NV 89146  
T: 702.804.2000 - F: 702.804.2299 - GCWALLACE.COM

**THE HOWARD HUGHES COMPANY, LLC**  
VILLAGE 23A/23B ALTA DRIVE IMPROVEMENTS  
**STORM DRAIN MASTER PLAN**

20130839

CLV DRAWING NO. 103V5922  
1/21/23

JOB NO. 620238-202