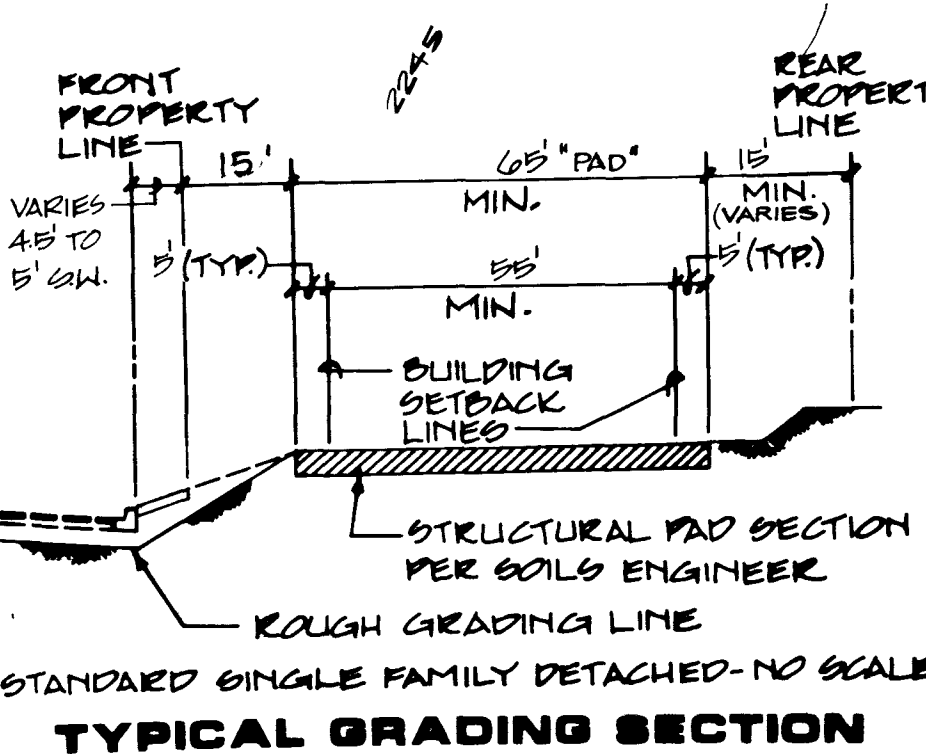


CURVE	ARC	DELTA	RADIUS	TAN LENGTH
C1	11.73	33°35'41"	20.00	5.04
C2	18.81	2°52'27"	375.00	9.41
C3	10.93	25°03'27"	25.00	5.56
C4	12.25	28°04'21"	25.00	6.25
C5 @ B/C	23.00	30°00'00"	30.00	22.00
C6 @ B/C	38.54	73°31'21"	30.00	23.23
C7 @ B/C	126.29	131°34'10"	66.00	122.29



FUTURE DEVELOPMENT
"RANCHO ALTA MIRA"

- GENERAL NOTES**
- ALL GRADES SHOWN HEREON ARE TO FINISH GRADE ONLY AND ARE 0.10 FEET LOW TO ALLOW FOR LANDSCAPING EXCEPT T.C., P.L., AND F.C. WHICH ARE TO FINISH GRADES.
 - ALL LOTS ARE TO BE F.N.A. TYPE "A" DRAINAGE UNLESS OTHERWISE NOTED.
 - SEE IMPROVEMENT PLANS FOR STREET SECTIONS AND DETAILS. SEE FINAL MAP FOR EXACT BEARINGS AND DISTANCES.
 - THE QUANTITIES SHOWN HEREON ARE ESTIMATES ONLY AND ARE NOT TO BE USED FOR BIDDING PURPOSES.
 - CONTRACTORS SHALL VERIFY ALL CONDITIONS AND DIMENSIONS AND SHALL REPORT ALL DISCREPANCIES TO THE ENGINEER PRIOR TO THE COMMENCEMENT OF WORK.
 - ALL WORK PERFORMED SHALL BE IN ACCORDANCE WITH THE "PRELIMINARY GEOTECHNICAL INVESTIGATION" BY WESTERN TECHNOLOGIES, INC., DATED NOV. 16, 1988, NO. 41201587.

- LEGEND**
- ① LOT NUMBER
 - ② BLOCK NUMBER
 - CONTOUR LINE (1' INTERVAL)
 - FINISH GRADE
 - FLOW LINE
 - TOP OF CURB
 - BACK OF CURB
 - BEGIN CURB RETURN
 - EX EXISTING
 - (39.5) ELEVATION
 - SCARP AREA
 - CONCRETE BLOCK WALL
 - TOP OF ROLL CURB
 - PAD SETBACK
 - RETAINING WALL
 - GRADE BREAK
 - PAD GRADE
 - POINT OF CURVATURE
 - POINT OF TANGENT
 - POINT OF REVERSE CURVATURE
 - POINT OF COMPOUND CURVATURE
 - DIRECTION AND RATE OF SLOPE
 - BEGIN VERTICAL CURVE
 - MID-POINT OF VERTICAL CURVE
 - END VERTICAL CURVE
 - POINT OF REVERSE VERTICAL CURVE
 - TRANSITION IN CURVE

BENCHMARK
1'6" diameter concrete monument 78.20 feet east and 48.10 feet north of the Northwest Quarter corner of Section 5 marked by a 4" x 4" white post at Lone Mountain Road and Allen Lane.
BM# 2-5-107
Elevation 2188.430

REVISION

REV	DATE	BY

R.S. DEVELOPMENT
CITY OF LAS VEGAS

vtm nevada

CONSULTING ENGINEERS - PLANNERS
2300 PASEO DEL PRADO BUILDING A SUITE 100
LAS VEGAS, NEVADA 89102 PHONE (702) 873-7550

TITLE

ROUGH GRADING PLAN

PROJECT

CRIMSON RIDGE UNIT 1
(RANCHO ALTA MIRA LOT 7)

NO. 3370-1

BY J.U./W.H.R.

DATE 12-09

SCALE 1" = 40'

SHEET

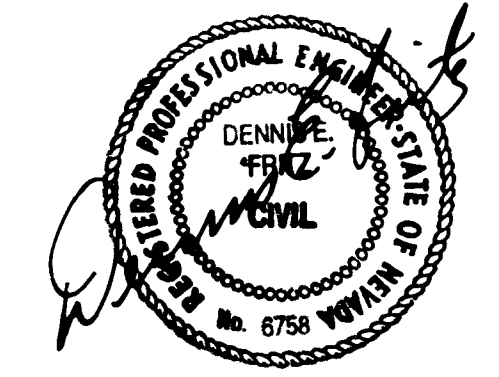
2

OF 11 SHEETS

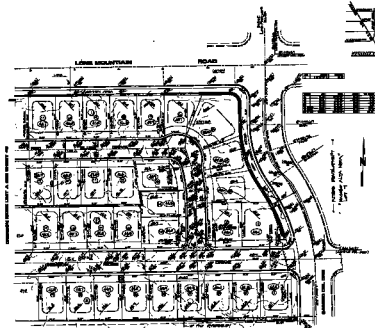
1074-4085-1

12/24/09

6500



10/10/77



NOTE: ELEVATION "GRADE" ALTHOUGH

- 1" DIA. STAINLESS STEEL
- 1/2" DIA. STAINLESS STEEL
- 1/4" DIA. STAINLESS STEEL
- 1/8" DIA. STAINLESS STEEL
- 1/4" DIA. STAINLESS STEEL
- 1/8" DIA. STAINLESS STEEL
- 1/4" DIA. STAINLESS STEEL
- 1/8" DIA. STAINLESS STEEL

- 1" DIA. STAINLESS STEEL
- 1/2" DIA. STAINLESS STEEL
- 1/4" DIA. STAINLESS STEEL
- 1/8" DIA. STAINLESS STEEL
- 1/4" DIA. STAINLESS STEEL
- 1/8" DIA. STAINLESS STEEL
- 1/4" DIA. STAINLESS STEEL
- 1/8" DIA. STAINLESS STEEL

REMARKS:
 ALL DIMENSIONS SHOWN ON THIS PLAN ARE TO BE CONSIDERED AS APPROXIMATE. THE CONTRACTOR SHALL BE RESPONSIBLE FOR OBTAINING ALL NECESSARY PERMITS AND FOR VERIFYING THE ACCURACY OF ALL DIMENSIONS AND LOCATIONS OF ALL UTILITIES AND OBSTRUCTIONS BEFORE BEGINNING WORK.

NO.	DATE	REVISIONS

ALL DIMENSIONS
 CITY OF SAN JOSE
VOTI
 CONSULTING ENGINEERS - PLANNERS
 1000 MARKET STREET, SUITE 100
 SAN JOSE, CALIFORNIA 95128

ROUGH GRADING PLAN
CRENSHAW RIDGE UNIT 1
 PARCELS 10, 11, 12, 13, 14, 15, 16, 17, 18, 19, 20, 21, 22, 23, 24, 25, 26, 27, 28, 29, 30, 31, 32, 33, 34, 35, 36, 37, 38, 39, 40, 41, 42, 43, 44, 45, 46, 47, 48, 49, 50, 51, 52, 53, 54, 55, 56, 57, 58, 59, 60, 61, 62, 63, 64, 65, 66, 67, 68, 69, 70, 71, 72, 73, 74, 75, 76, 77, 78, 79, 80, 81, 82, 83, 84, 85, 86, 87, 88, 89, 90, 91, 92, 93, 94, 95, 96, 97, 98, 99, 100

DATE: 10/10/77
 DRAWN BY: J. J. J.
 CHECKED BY: J. J. J.
 SCALE: 1" = 40'

