

NOTE:
 THE ENGINEER HAS ATTEMPTED TO ACCURATELY REPRESENT ALL EXISTING UTILITY LOCATIONS. THE CONTRACTOR SHALL IMMEDIATELY NOTIFY THE ENGINEER OF ANY DISCREPANCIES BETWEEN THE PLANS AND EXISTING FIELD CONDITIONS, INCLUDING THE HORIZONTAL AND VERTICAL LOCATION OF UTILITIES, AND THE EXISTENCE OR NON-EXISTENCE OF UTILITIES.

NOTE:
 18" SEPARATION BETWEEN WATER AND SEWER IS REQUIRED, OTHERWISE CONCRETE ENCASE 10' EACH SIDE OF CROSSING.

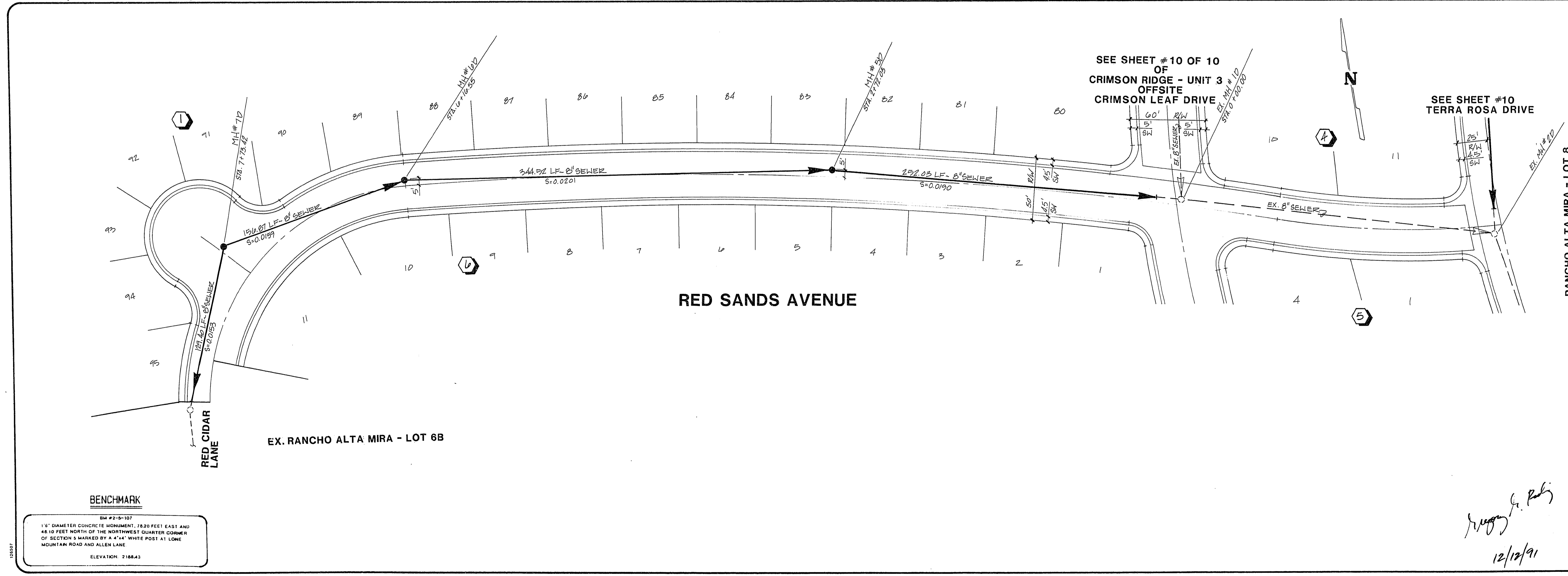
2255
 2250
 2245
 2240

REVISION	DATE	BY

R.S DEVELOPMENT
 CITY OF LAS VEGAS

CONSULTING ENGINEERS - PLANNERS
 2727 SOUTH RAINBOW BOULEVARD
 LAS VEGAS, NEVADA 89102 PHONE (702) 873-7550

vtm nevada



RANCHO ALTA MIRA - LOT 8

SEWER PLAN & PROFILE
 RED SANDS AVENUE

CRIMSON RIDGE - UNIT 4
 (RANCHO ALTA MIRA LOT 7)

NO. 3890-4
 BY GAT
 DATE MAY 1991
 SCALE HORIZ. 1"=40'
 VERT. 1"=4'

SHEET
9
 OF 10 SHEETS
 1074-4085-4

BENCHMARK
 BM 42-5-107
 16" DIAMETER CONCRETE MONUMENT, 7520 FEET EAST AND 46.10 FEET NORTH OF THE NORTHWEST QUARTER CORNER OF SECTION 9 MARKED BY A 4"x4" WHITE POST AT LONG MOUNTAIN ROAD AND ALLEN LANE
 ELEVATION: 2188.43

Rugby G. Park
 12/12/91