

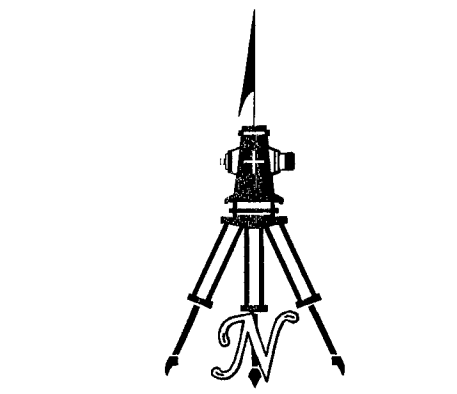
# MONUMENT TIE MAP FOR CATALINA PHASE 1 AND PHASE 2

AS SHOWN BY MAP THEREOF IN BOOK 145, PAGE 7 AND BOOK 145, PAGE 90 OF PLATS IN THE CLARK COUNTY RECORDER'S OFFICE, NEVADA, LYING WITHIN THE WEST HALF (W1/2) OF SECTION 34, TOWNSHIP 20 SOUTH, RANGE 59 EAST, M.D.M., CITY OF LAS VEGAS, CLARK COUNTY, NEVADA.

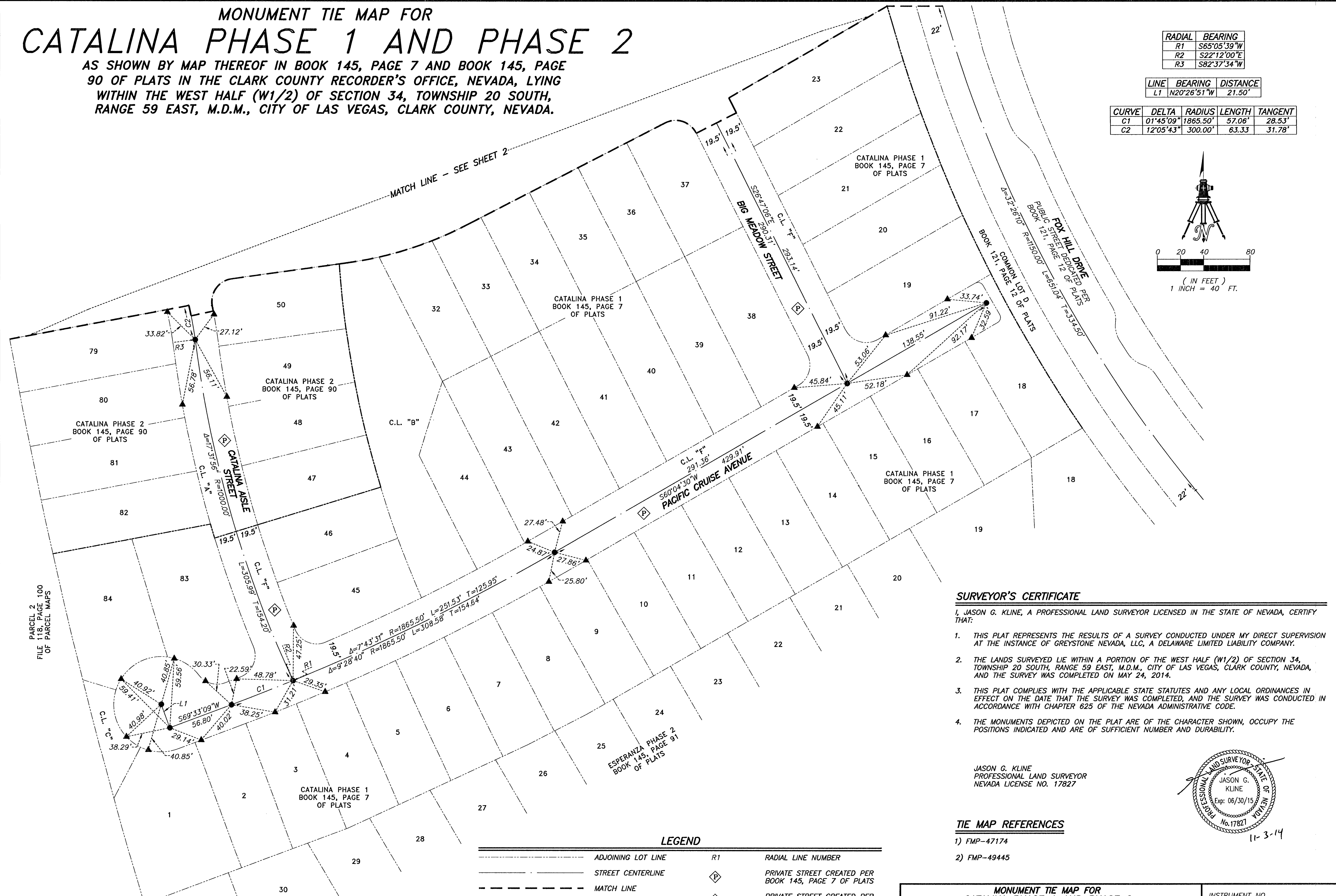
RADIAL	BEARING
R1	S65°05'39"W
R2	S22°12'00"E
R3	S82°37'34"W

LINE	BEARING	DISTANCE
L1	N20°26'51"W	21.50'

CURVE	DELTA	RADIUS	LENGTH	TANGENT
C1	01°45'09"	1865.50'	57.06'	28.53'
C2	12°05'43"	300.00'	63.33'	31.78'



( IN FEET )  
1 INCH = 40 FT.

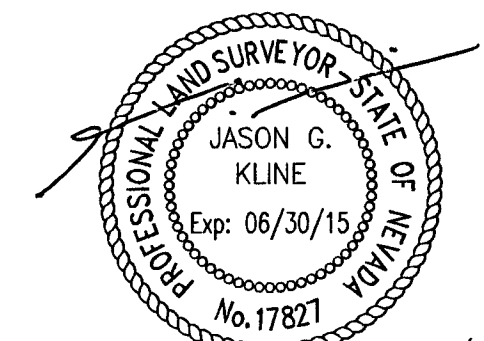


### SURVEYOR'S CERTIFICATE

I, JASON G. KLINE, A PROFESSIONAL LAND SURVEYOR LICENSED IN THE STATE OF NEVADA, CERTIFY THAT:

- THIS PLAT REPRESENTS THE RESULTS OF A SURVEY CONDUCTED UNDER MY DIRECT SUPERVISION AT THE INSTANCE OF GREYSTONE NEVADA, LLC, A DELAWARE LIMITED LIABILITY COMPANY.
- THE LANDS SURVEYED LIE WITHIN A PORTION OF THE WEST HALF (W1/2) OF SECTION 34, TOWNSHIP 20 SOUTH, RANGE 59 EAST, M.D.M., CITY OF LAS VEGAS, CLARK COUNTY, NEVADA, AND THE SURVEY WAS COMPLETED ON MAY 24, 2014.
- THIS PLAT COMPLIES WITH THE APPLICABLE STATE STATUTES AND ANY LOCAL ORDINANCES IN EFFECT ON THE DATE THAT THE SURVEY WAS COMPLETED, AND THE SURVEY WAS CONDUCTED IN ACCORDANCE WITH CHAPTER 625 OF THE NEVADA ADMINISTRATIVE CODE.
- THE MONUMENTS DEPICTED ON THE PLAT ARE OF THE CHARACTER SHOWN, OCCUPY THE POSITIONS INDICATED AND ARE OF SUFFICIENT NUMBER AND DURABILITY.

JASON G. KLINE  
PROFESSIONAL LAND SURVEYOR  
NEVADA LICENSE NO. 17827



### TIE MAP REFERENCES

- FMP-47174
- FMP-49445

### LEGEND

	ADJOINING LOT LINE	R1	RADIAL LINE NUMBER
	STREET CENTERLINE		PRIVATE STREET CREATED PER BOOK 145, PAGE 7 OF PLATS
	MATCH LINE		PRIVATE STREET CREATED PER BOOK 145, PAGE 90 OF PLATS
	TIE LINE		SET 2" ALUMINUM CAP STAMPED "PLS 17827" WITH REFERENCE MONUMENTS SET IN TOP OF CURB
1	LOT NUMBER	●	SET 2" ALUMINUM CAP STAMPED "RM PLS 17827" (WITH STAMPED DISTANCES AS SHOWN HEREON)
C.L.	COMMON LOT		
L1	LINE SEGMENT NUMBER		
C1	CURVE SEGMENT NUMBER	▲	

### COUNTY RECORDER'S NOTE

ANY SUBSEQUENT CHANGES TO THIS MAP SHOULD BE EXAMINED AND MAY BE DETERMINED BY REFERENCE TO THE COUNTY RECORDER'S CUMULATIVE MAP INDEX. N.R.S. 278.5695.

**MONUMENT TIE MAP FOR  
CATALINA PHASE 1 AND PHASE 2**

AS SHOWN BY MAP THEREOF IN BOOK 145, PAGE 7 AND BOOK 145, PAGE 90 OF PLATS IN THE CLARK COUNTY RECORDER'S OFFICE, NEVADA, LYING WITHIN THE WEST HALF (W1/2) OF SECTION 34, TOWNSHIP 20 SOUTH, RANGE 59 EAST, M.D.M., CITY OF LAS VEGAS, CLARK COUNTY, NEVADA.



**WALLACE · MORRIS**  
SURVEYING, INC.  
LAND SURVEY CONSULTING  
5740 SOUTH ARVILLE STREET, #206  
LAS VEGAS, NEVADA 89118  
PH:702.212.3967 FX:702.212.3963

INSTRUMENT NO. \_\_\_\_\_  
OFFICIAL RECORDS  
BOOK NO. \_\_\_\_\_  
FILED AT THE REQUEST OF  
WALLACE-MORRIS SURVEYING, INC.  
DATE \_\_\_\_\_ AT \_\_\_\_\_  
FILE \_\_\_\_\_ PAGE \_\_\_\_\_  
OF SURVEYS  
CLARK COUNTY, NEVADA RECORDS  
DEBBIE CONWAY, RECORDER  
FEE \$ \_\_\_\_\_ DEPUTY \_\_\_\_\_