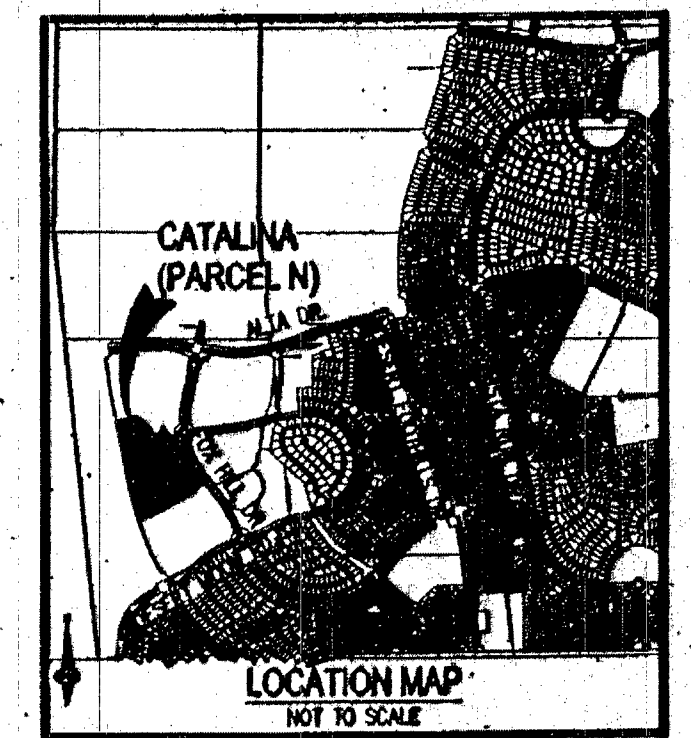
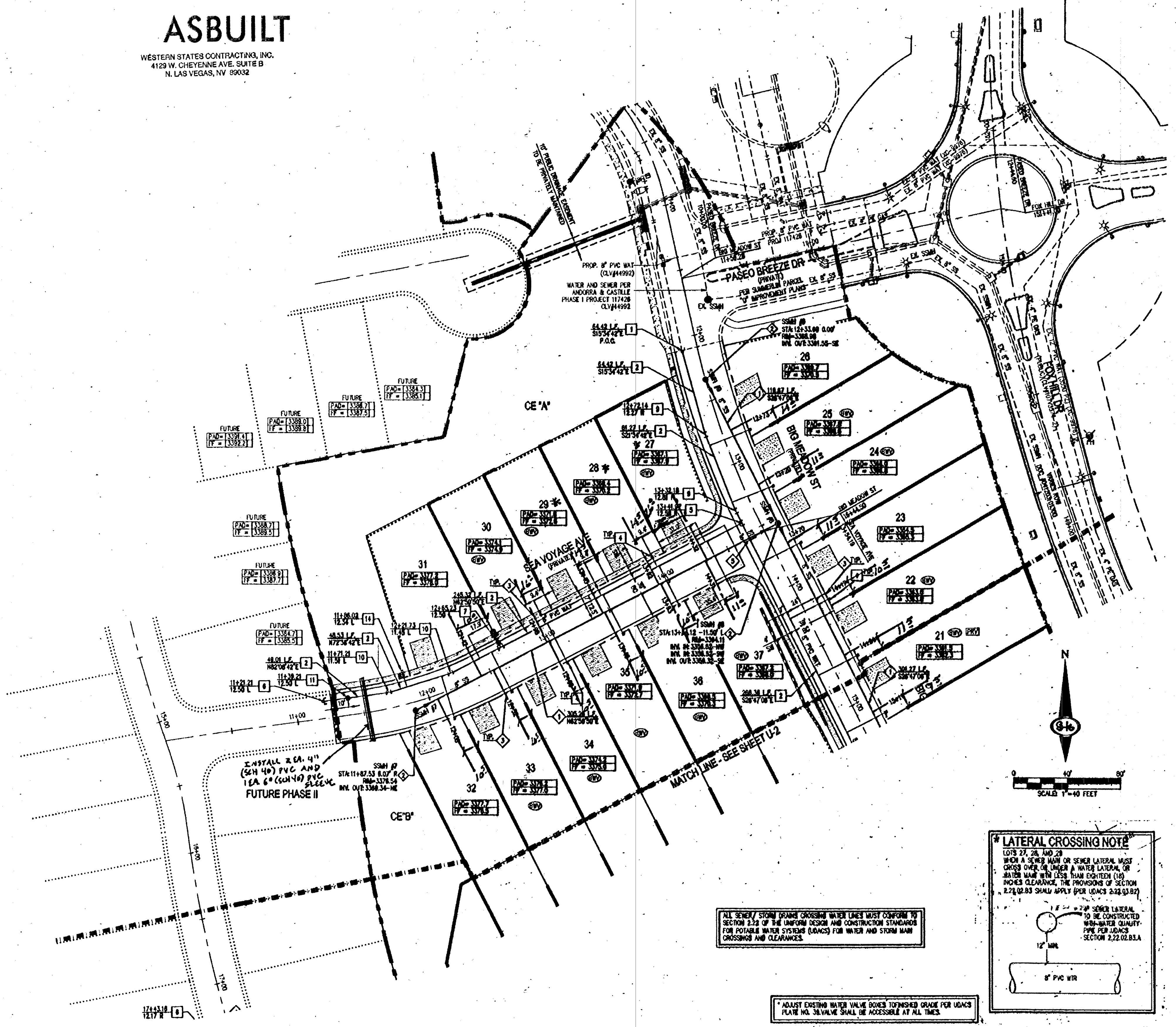


ASBUILT

WESTERN STATES CONTRACTING, INC.
4129 W. CHEYENNE AVE. SUITE B
N. LAS VEGAS, NV 89032



REDUCED PRESSURE PRINCIPLE ASSEMBLY (1) 1/2"
APPROVED REDUCED PRESSURE PRINCIPLE ASSEMBLY (1) SHALL BE INSTALLED FOR THE UDACS PLATE NO. 1 & NO WATER SHALL BE TAKEN FROM A SERVICE REQUIREING BACKFLOW PREVENTION UNTIL THE REDUCED PRESSURE PRINCIPLE ASSEMBLY HAS BEEN SUCCESSFULLY TESTED BY THE LVWD. ANY BLOCK WALL OR OTHER FENCE MATERIAL SHALL BE DESIGNED AND CONSTRUCTED AROUND THE OUTSIDE OF THE ASSEMBLY TO ALLOW THE DISTRICT INSPECTOR ACCESS FROM THE ADJACENT SIDE OF SAID ASSEMBLY SHALL BE CLEARLY MARKED OR STAKED PRIOR TO THE START OF CONSTRUCTION.

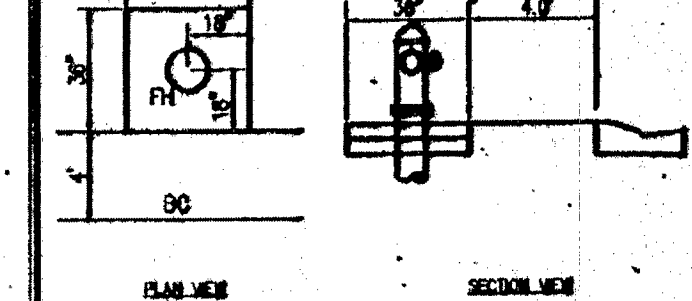
BENCHMARK
INSET & PLATE IN TOP OF CURB IN THE SOUTHEAST CORNER OF DESECT ROAD & DESECT SUNSHINE ROAD. 7.000/45.000 NAVD BE ELEVATION = 1006.288 METERS = 3304.67 FEET

BASIS OF BEARING
NORTH 05°50'50" WEST, BEING THE BEARING OF THE WEST LINE OF SECTION 34, TOWNSHIP 20 SOUTH, RANGE 59 EAST, MERIDIAN, CITY OF LAS VEGAS, CLARK COUNTY, NEVADA, AS SHOWN BY MAP THEREOF OR FILE IN BOOK 143, PAGE 43 OF PLATS IN THE CLARK COUNTY RECORDER'S OFFICE, NEVADA.

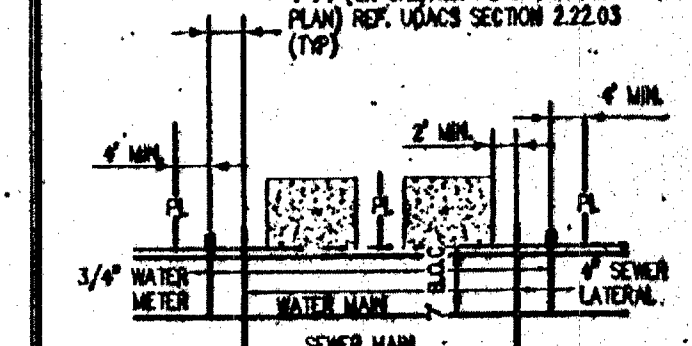
INSTALL PIPELINE MARKER BALLS IN TRENCH ABOVE EACH HORIZONTAL ELBOW FITTING PER UDACS PLATE NO. 13

WATER MAIN JOINT DEFLECTION (1) 1/2" - 2"
FOR JOINTS SHALL BE DEFLECTED AT 10% JOINT ONLY. THE MAXIMUM ALLOWABLE DEFLECTION SHALL BE ONE (1) DEGREE PER JOINT WITH A MINIMUM RADIUS OF CURVATURE OF 1,150 FEET, FOR UDACS 2.07.08 AND 2.07.08.

FOR CHANGES IN DIRECTION EXCEEDING THE MAXIMUM ALLOWABLE JOINT DEFLECTION, FITTINGS SHALL BE USED.

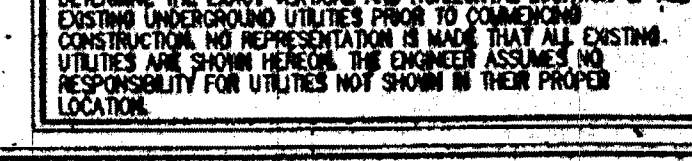


TYPICAL FIRE HYDRANT LOCATION DETAIL



TYPICAL UTILITY LOCATION

DISCLAIMER NOTE
EXISTING UTILITY LOCATIONS SHOWN HEREON ARE APPROXIMATE ONLY. IT SHALL BE THE RESPONSIBILITY OF THE CONTRACTOR TO DETERMINE THE EXACT VERTICAL AND HORIZONTAL LOCATION OF ALL EXISTING UNDERGROUND UTILITIES PRIOR TO CONSTRUCTION. THE CONTRACTOR IS MADE THAT ALL EXISTING UTILITIES ARE SHOWN HEREON. THE ENGINEER ASSUMES NO RESPONSIBILITY FOR UTILITIES NOT SHOWN IN THEIR PROPER LOCATION.



TYPICAL SEWER LATERAL

FIRE FLOW CALCULATIONS

FIRE FLOW 1.25L GPM AT 20 P.S.I. RESIDUAL

USE/OCCUPANCY:	SINGLE FAMILY
TYPE OF CONSTRUCTION (BC):	TYPE V-B
AUTOMATIC FIRE SPRINKLERS:	NO
SQUARE FOOTAGE:	3,500
LARGEST AREA BETWEEN 4-HR WALLS:	3,500
BUILDING HEIGHT:	1.5
NO OF STORES INCLUDING BASEMENT:	2
HIGH PILED COMBUSTIBLE STORAGE:	NO
NO OF HYDRANTS INSTALLED:	3

- WATER NOTES**
- REMOVE CAP AND BLOW OFF PER UDACS PLATE NO. 36 AND CONNECT TO EXISTING MAIN
 - INSTALL 8" PVC (CLASS 150) WATER PIPE
 - INSTALL 8" PVC (CLASS 150) WATER PIPE
 - INSTALL 3/4" WATER METER PER UDACS PLATE # 2 (1P)
 - INSTALL 4" x 4" TEE WITH THRUST BLOCKS PER UDACS PLATE # 36
 - INSTALL CAP AND 2" BLOWOFF VALVE PER UDACS PLATE # 36
 - INSTALL 4" x 4" TEE PER UDACS PLATE # 36 AND FIRE HYDRANT ASSEMBLY WITH 4" GATE VALVE PER UDACS PLATE # 36 AND 4" INSTALL 4" BLOW OFF PER UDACS PLATE # 36
 - INSTALL 11.25" BLOW OFF PER UDACS PLATE # 36
 - INSTALL 11.25" BLOW OFF PER UDACS PLATE # 36
 - INSTALL 4" GATE VALVE WITH VALVE BOX PER UDACS PLATE NO. 30 & 39
 - 1/2" MAX DEFLECTION
 - INSTALL 4" DP REDUCER PER UDACS PLATE # 36
 - INSTALL 1" IRRIGATION METER PER UDACS PLATE # 4 & 1/2" BACKFLOW PREVENTION ASSEMBLY PER UDACS PLATE # 36
 - INSTALL 4" DP (CLASS 350) WATER PIPE

- SEWER NOTES**
- INSTALL 4" PVC SANITARY SEWER PIPE
 - INSTALL 4" DIAMETER SANITARY SEWER MANHOLE PER UDACS SD-1A & SD-1B
 - INSTALL 4" SEWER LATERAL PER SD-23, SD-24 & SD-25 1/2" x 4" TYPICAL
 - STUB AND CAP 4" SD (WITH THRUST BLOCK PER DETAIL OF SHEET U-1)
 - PROTECT SEWER PER SD-21
- SEE SHEET C-2 FOR QUANTITIES AND ABBREVIATIONS

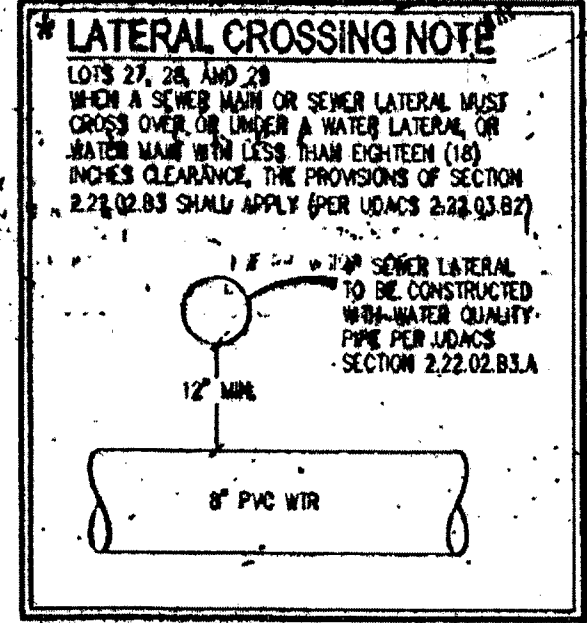
- GENERAL NOTES**
- REPLACE ALL TRAFFIC CONTROL DEVICES (SIGNS AND/OR PAVEMENT MARKINGS) UNDER CLARK COUNTY'S JURISDICTION THAT ARE DAMAGED, DESTROYED, MOVED OR MODIFIED BY TRENCHING ACTIVITIES TO CLARK COUNTY'S SATISFACTION. ALL MATERIAL USED SHALL MEET CLARK COUNTY'S SPECIFICATIONS OR WILL BE AN APPROVED EQUIVALENT.
 - IN THE EVENT THAT THE TRAFFIC SIGNAL CONDUITS LOOP DEVICES OR ASSOCIATED EQUIPMENT ARE DAMAGED BY CONSTRUCTION, THE CONTRACTOR SHALL REPAIR AND MAINTAIN ELECTRICAL CONNECTION TO MAKE REPAIRS PER UNIFORM SPECIFICATION NO. 22.02.02.
 - ALL SEWER STORM DRAIN CROSSING WATER LINES MUST CONFORM TO SECTION 2.22 OF THE UNIFORM DESIGN AND CONSTRUCTION STANDARDS FOR POTABLE WATER SYSTEMS (UDACS) FOR WATER AND STORM DRAIN CROSSINGS AND CLEARANCES.
 - THE CONTRACTOR IS TO VERIFY THE ACTUAL FIELD CONDITIONS OF ALL LOTS AND INSTALL SEWER OCEAN VALVES WHERE REQUIRED PER THE LATEST EDITION OF THE UNIFORM PLUMBING CODE.
 - FITTINGS SHALL NOT FALL UNDER CURBS, OUTTERS OR SIDEWALK.

APPROVAL
[Signature] 11/12
LAS VEGAS FIRE AND RESCUE

APPROVED FOR CONSTRUCTION
[Signature]
LAS VEGAS VALLEY WATER DISTRICT ENGINEERING SERVICES MANAGER
DATE 11/12/12 PROJECT NO. 12098
LVWD APPROVED FIRE FLOW - 1.25L GPM AT 20 PSI RESIDUAL

SUMMERLIN RESIDENTIAL DESIGN REVIEW COMMITTEE DATE
THIS SIGNATURE IS LIMITED TO APPROVAL OF THESE DOCUMENTS FOR CONFORMANCE WITH THE DESIGN INTENT OF THE APPLICABLE DESIGN CRITERIA, METHODS, STANDARDS AND THE SUMMERLIN RESIDENTIAL DESIGN REVIEW COMMITTEE ASSUMES NO RESPONSIBILITY FOR CONFORMANCE WITH APPLICABLE LAWS, ORDINANCES, AND CODES.

ALL SEWER STORM DRAIN CROSSING WATER LINES MUST CONFORM TO SECTION 2.22 OF THE UNIFORM DESIGN AND CONSTRUCTION STANDARDS FOR POTABLE WATER SYSTEMS (UDACS) FOR WATER AND STORM DRAIN CROSSINGS AND CLEARANCES.



ADJUST EXISTING WATER VALVE BOXES TO FINISHED GRADE PER UDACS PLATE NO. 36 VALVE SHALL BE ACCESSIBLE AT ALL TIMES.

NOTE: THIS PROJECT PLAN APPROVAL CONTINGENT ON DISTRICT 11728 ANDORRA & CASTILLA - PHASE I PLAN APPROVAL.

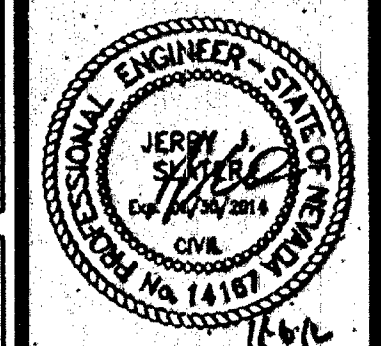
SLATER HANIFAN GROUP
CONSULTING ENGINEERS & PLANNERS
6040 S. ARKELLE STREET RICH, LAS VEGAS, NV 89118
PHONE (702) 394-4300 FAX (702) 394-4300

DATE	BY	DATE	DESCRIPTION

LENNAR
CATALINA PHASE 1
UTILITY PLAN I

DATE: 10/31/12
DRAFTER: BCC
DESIGNER: BCC
CHECKED: STS

PROJECT NO.
LEN1202-000



U-1
SHEET 10 OF 12

ASBUILT

#46965