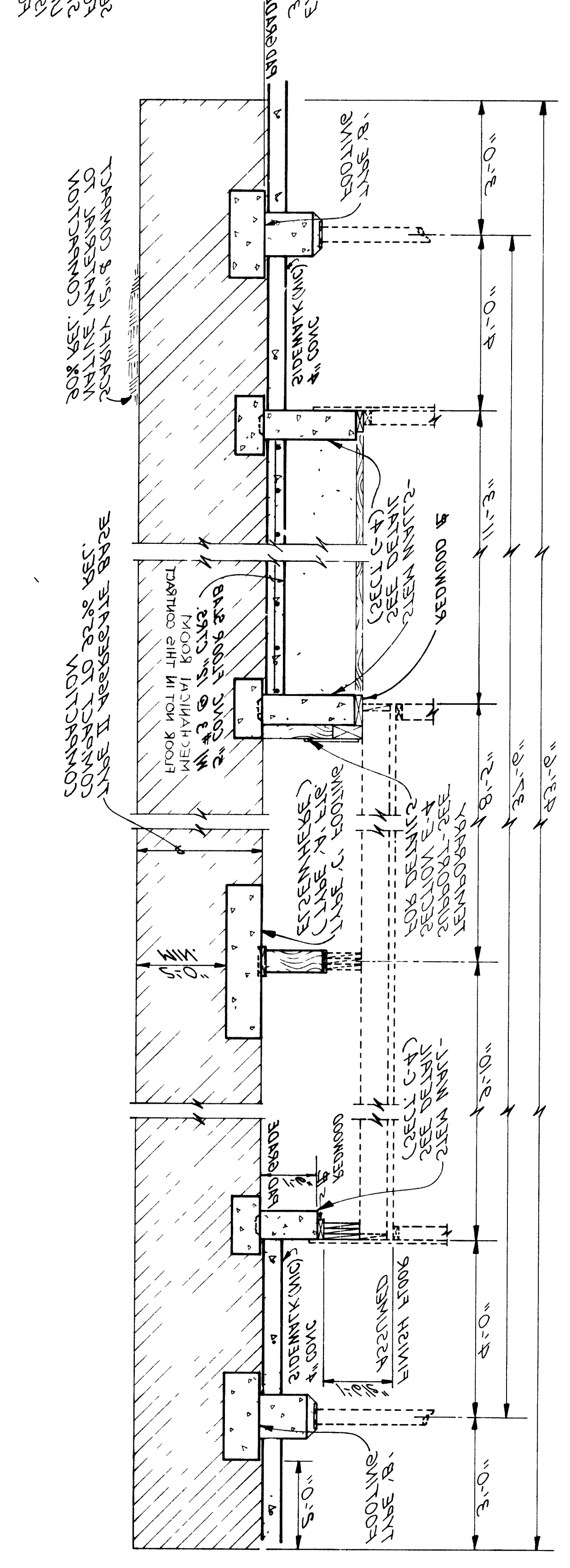
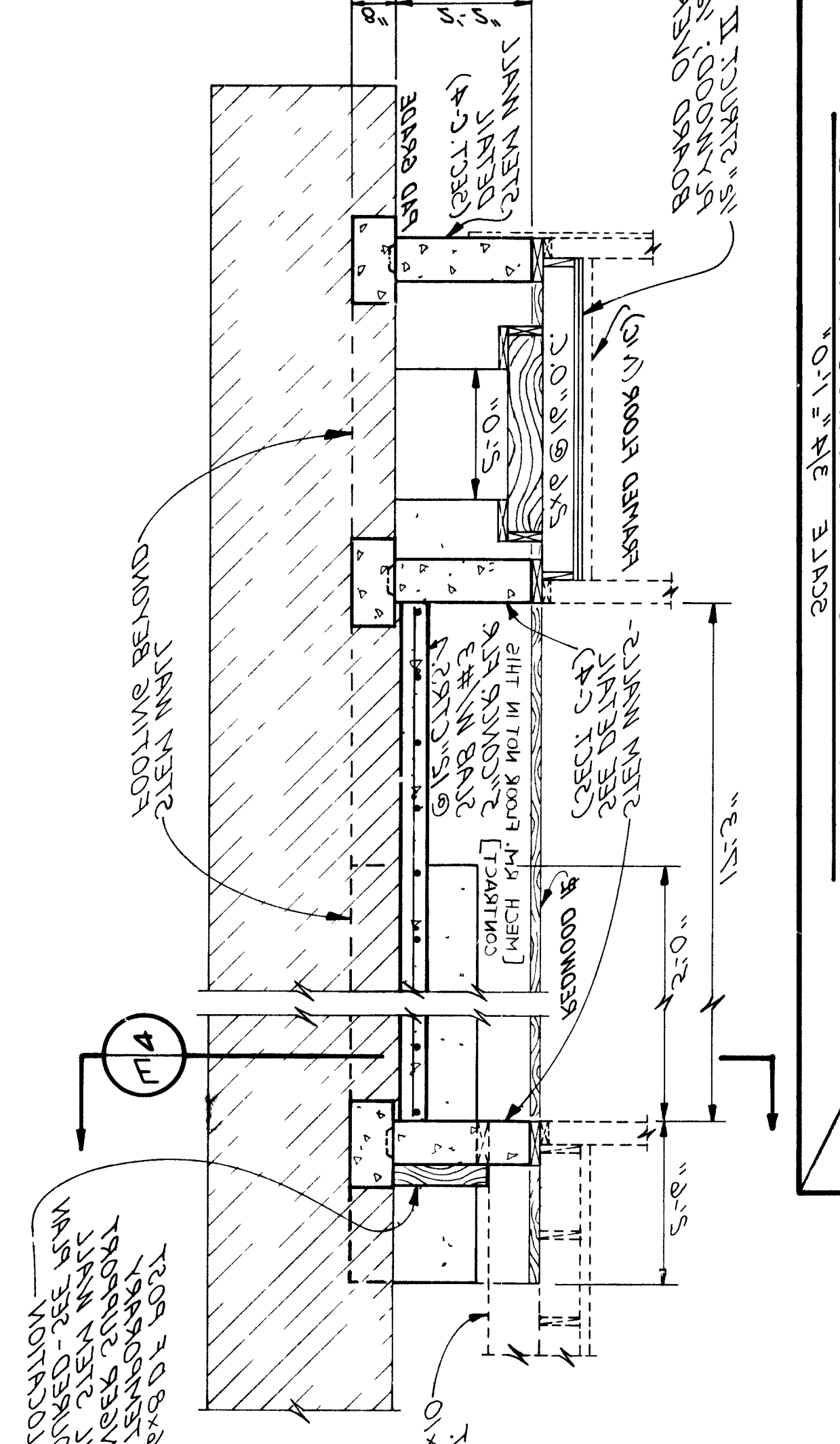


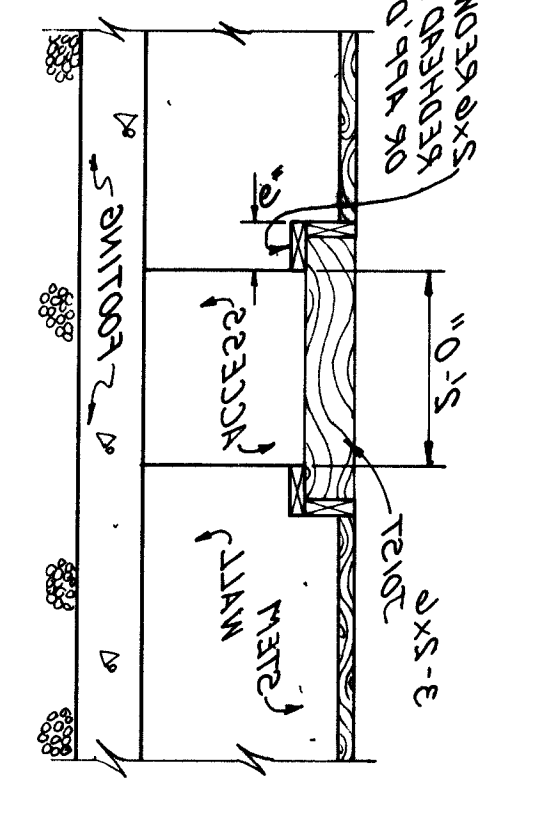
SECTION A



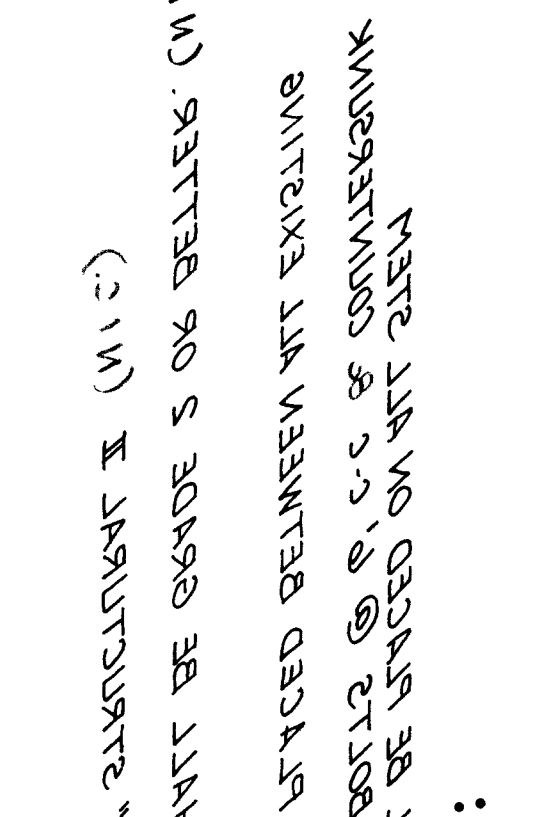
SECTION B



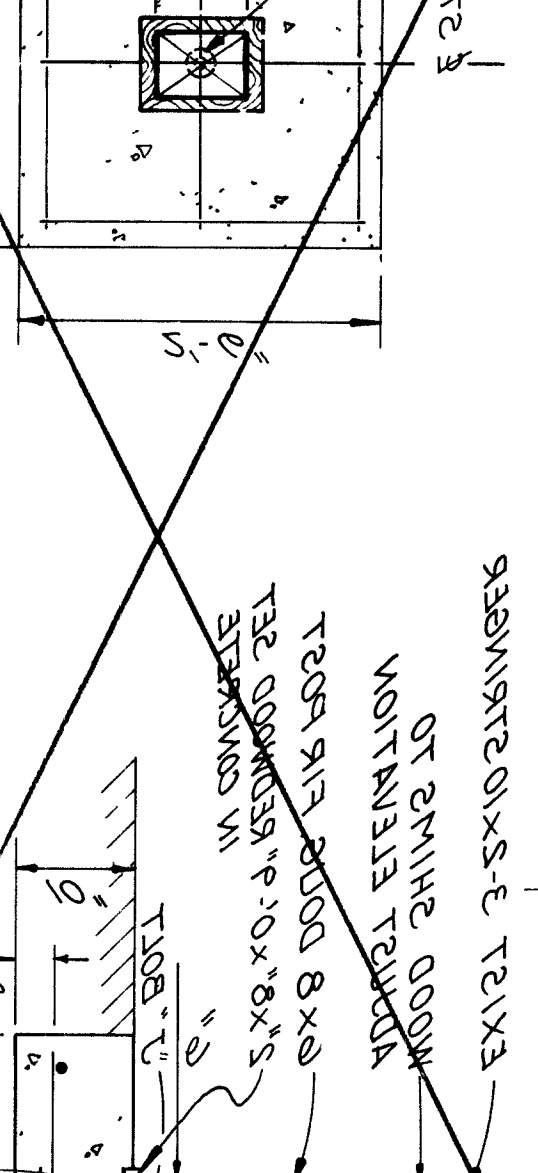
SECTION C



SECTION D

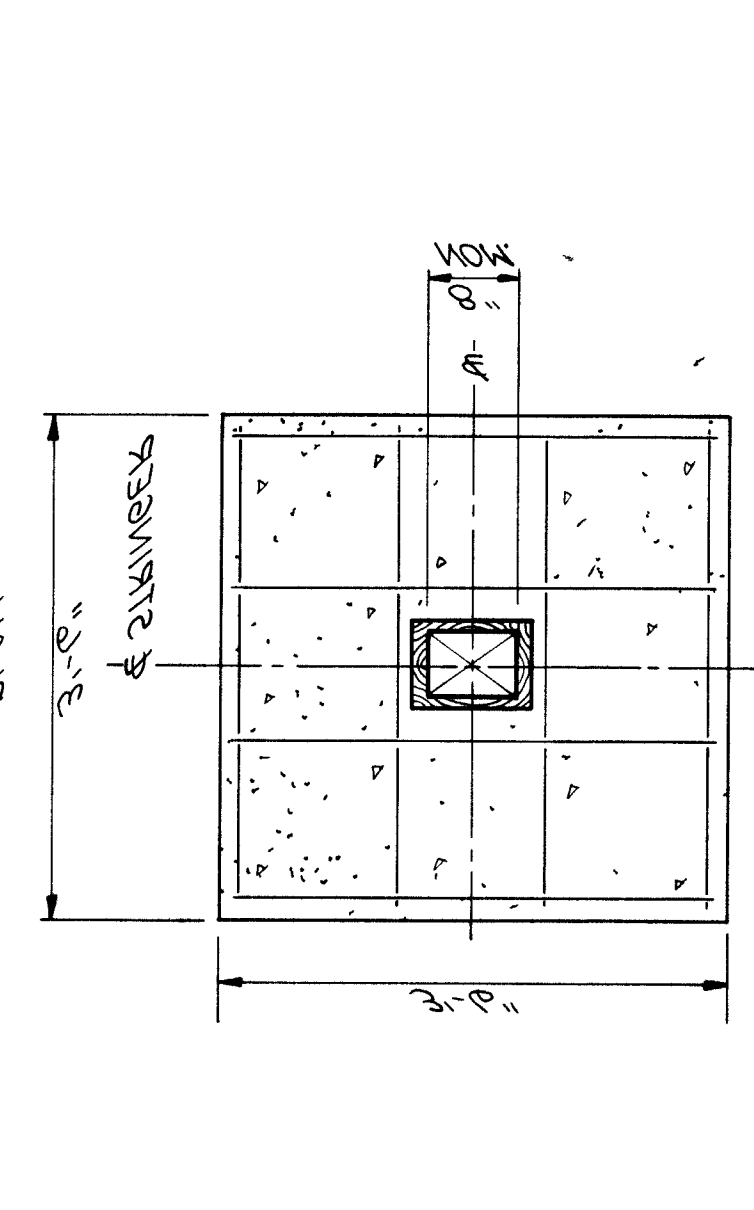


SECTION E

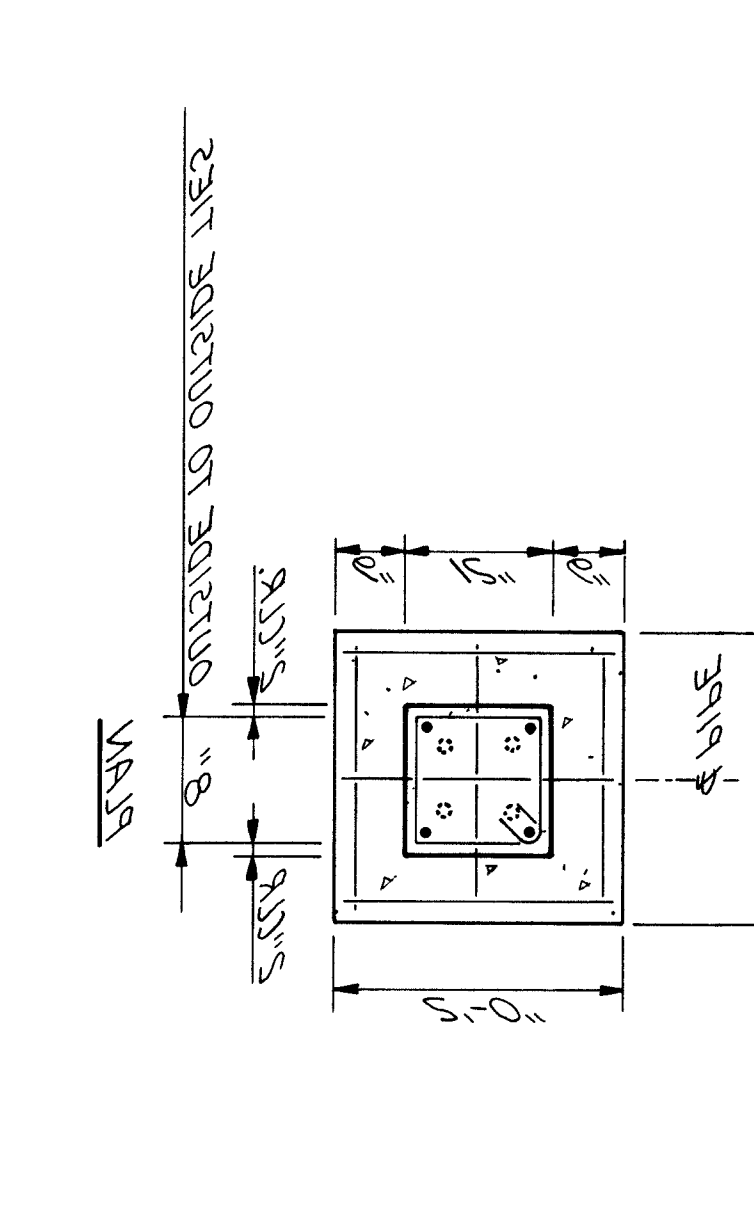


GENERAL NOTES:
 1. ALL FOOTING SHALL BE 15% SUBSTITUTED II (MIC)
 2. ALL CONCRETE FOR FOOTING SHALL BE GRADE 50% BETTER (MIC)
 3. ALL REINFORCING BARS SHALL BE PLACED BETWEEN ALL EXISTING
 WALLS WITH 15" & MINIMUM BARS @ 8" C.C. & SPACING SHALL
 1. 5"x8" REINFORCING BARS SHALL BE SPACED ON ALL 2'-0"

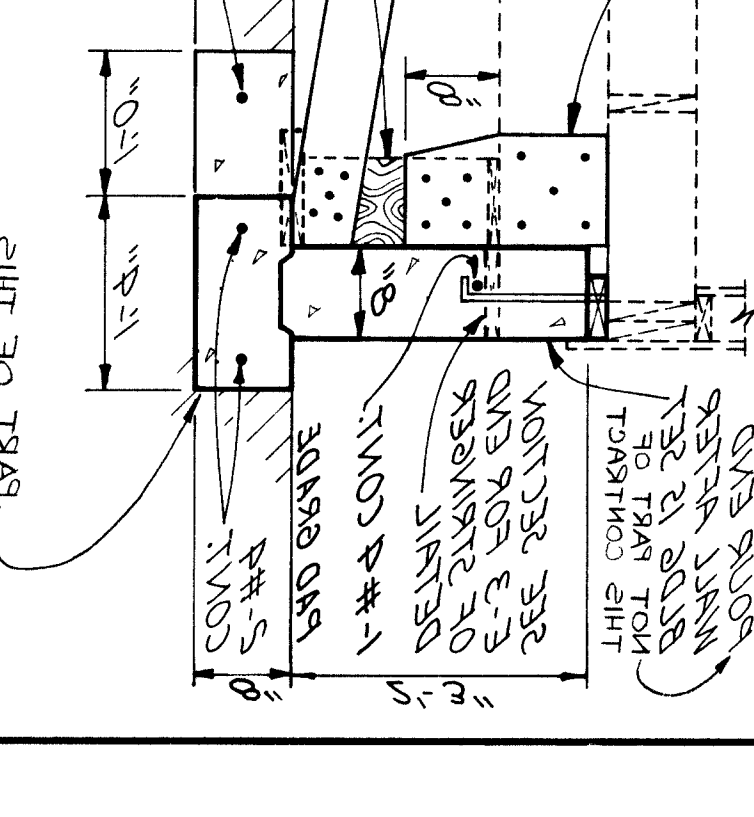
SECTION A



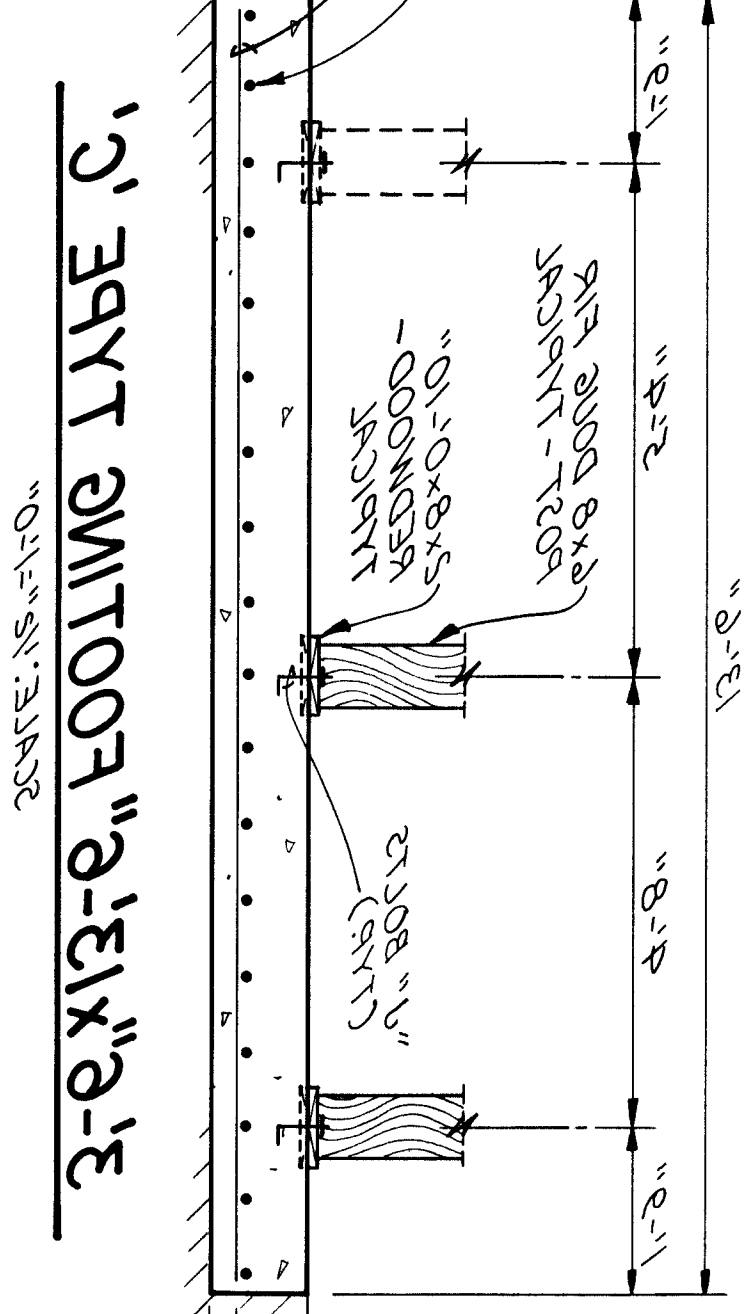
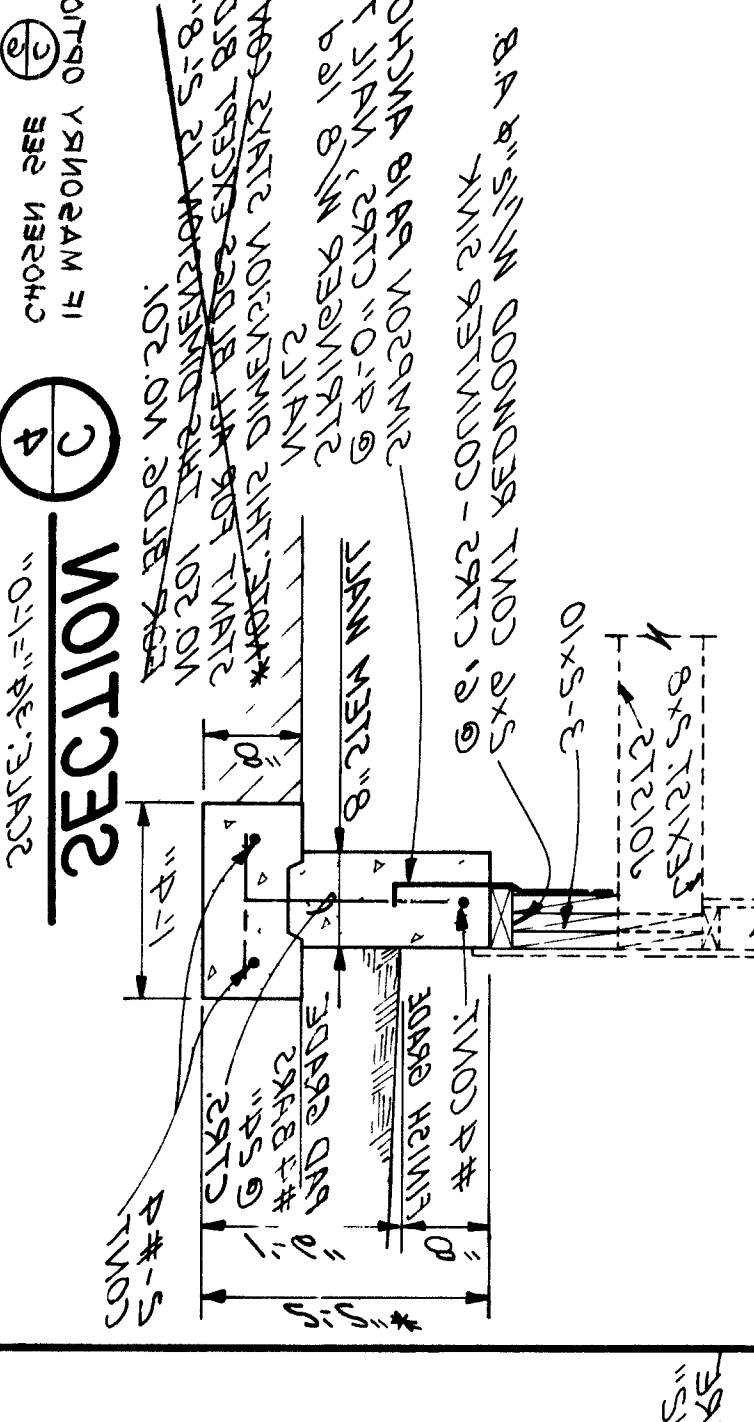
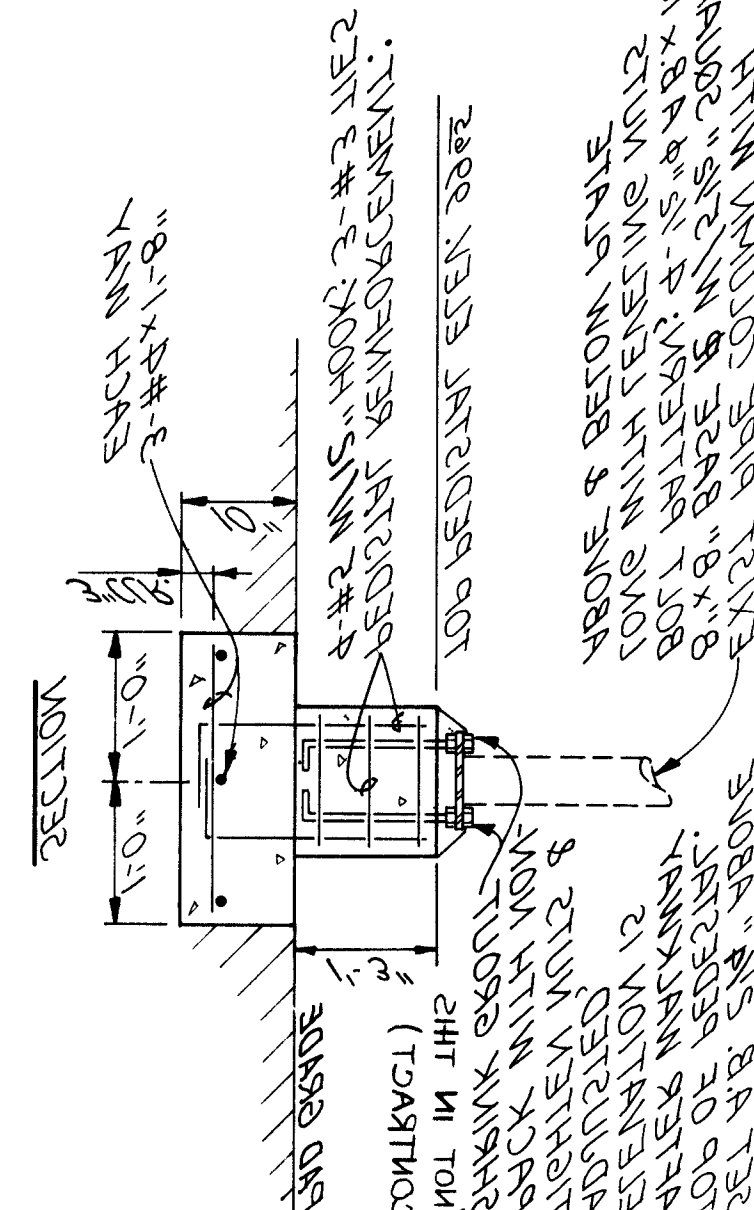
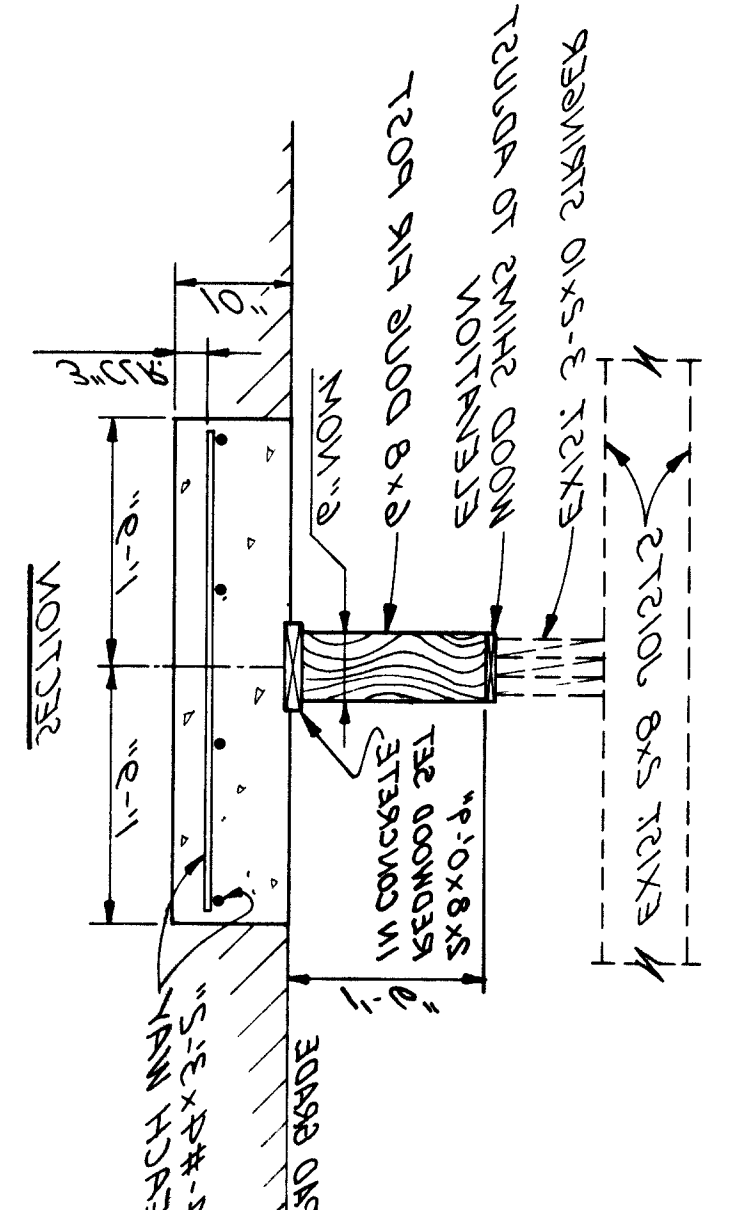
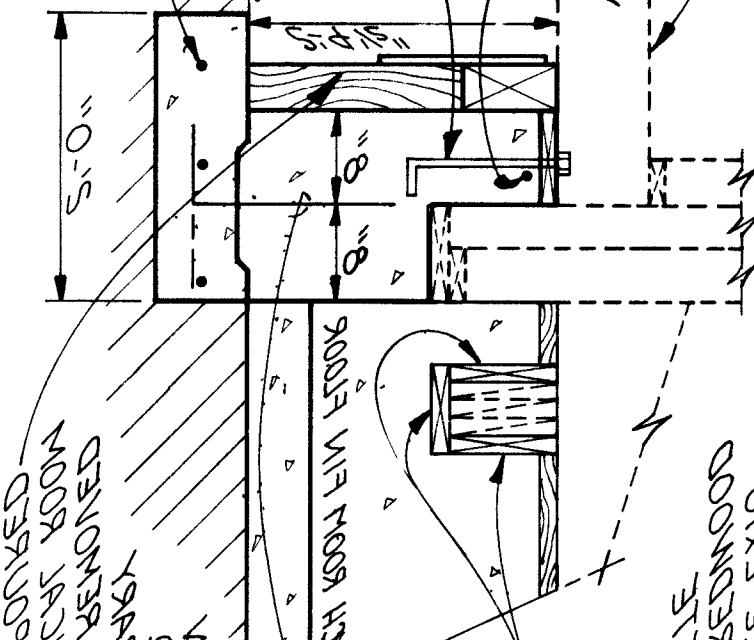
SECTION B



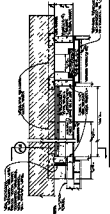
SECTION C



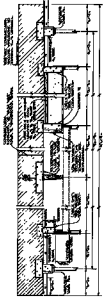
SECTION D



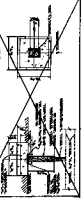
SECTION ①



SECTION ①



SECTION ①



1. THE OPERATOR SHALL BE TRAINED IN THE USE OF THE MACHINE (PARTS)
 2. THE OPERATOR SHALL BE TRAINED IN THE USE OF THE MACHINE (PARTS)
 3. THE OPERATOR SHALL BE TRAINED IN THE USE OF THE MACHINE (PARTS)
 4. THE OPERATOR SHALL BE TRAINED IN THE USE OF THE MACHINE (PARTS)
 5. THE OPERATOR SHALL BE TRAINED IN THE USE OF THE MACHINE (PARTS)
 6. THE OPERATOR SHALL BE TRAINED IN THE USE OF THE MACHINE (PARTS)
 7. THE OPERATOR SHALL BE TRAINED IN THE USE OF THE MACHINE (PARTS)
 8. THE OPERATOR SHALL BE TRAINED IN THE USE OF THE MACHINE (PARTS)
 9. THE OPERATOR SHALL BE TRAINED IN THE USE OF THE MACHINE (PARTS)
 10. THE OPERATOR SHALL BE TRAINED IN THE USE OF THE MACHINE (PARTS)

SECTION ①



SECTION ①



SECTION ①



SECTION ①



SECTION ①

