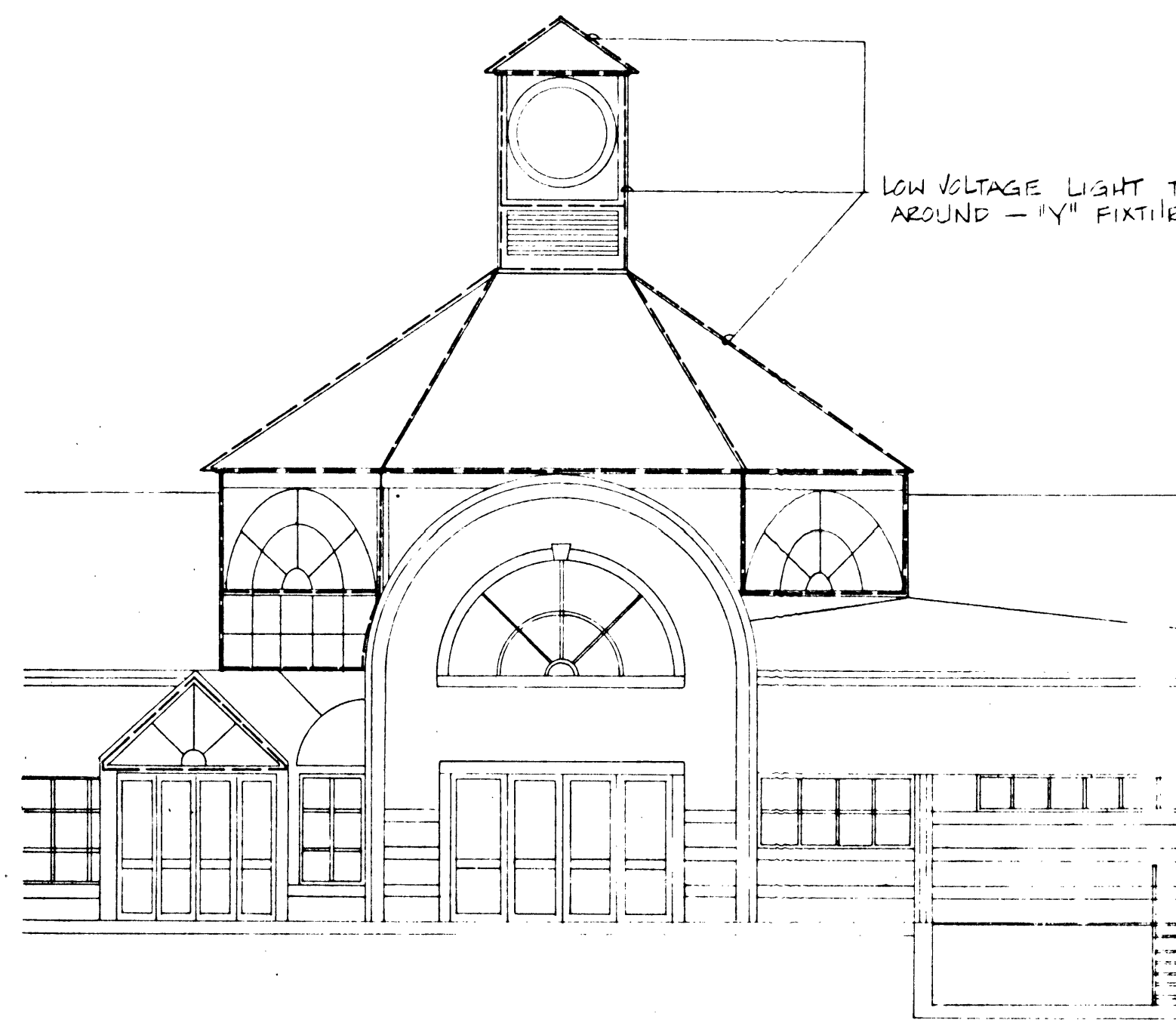


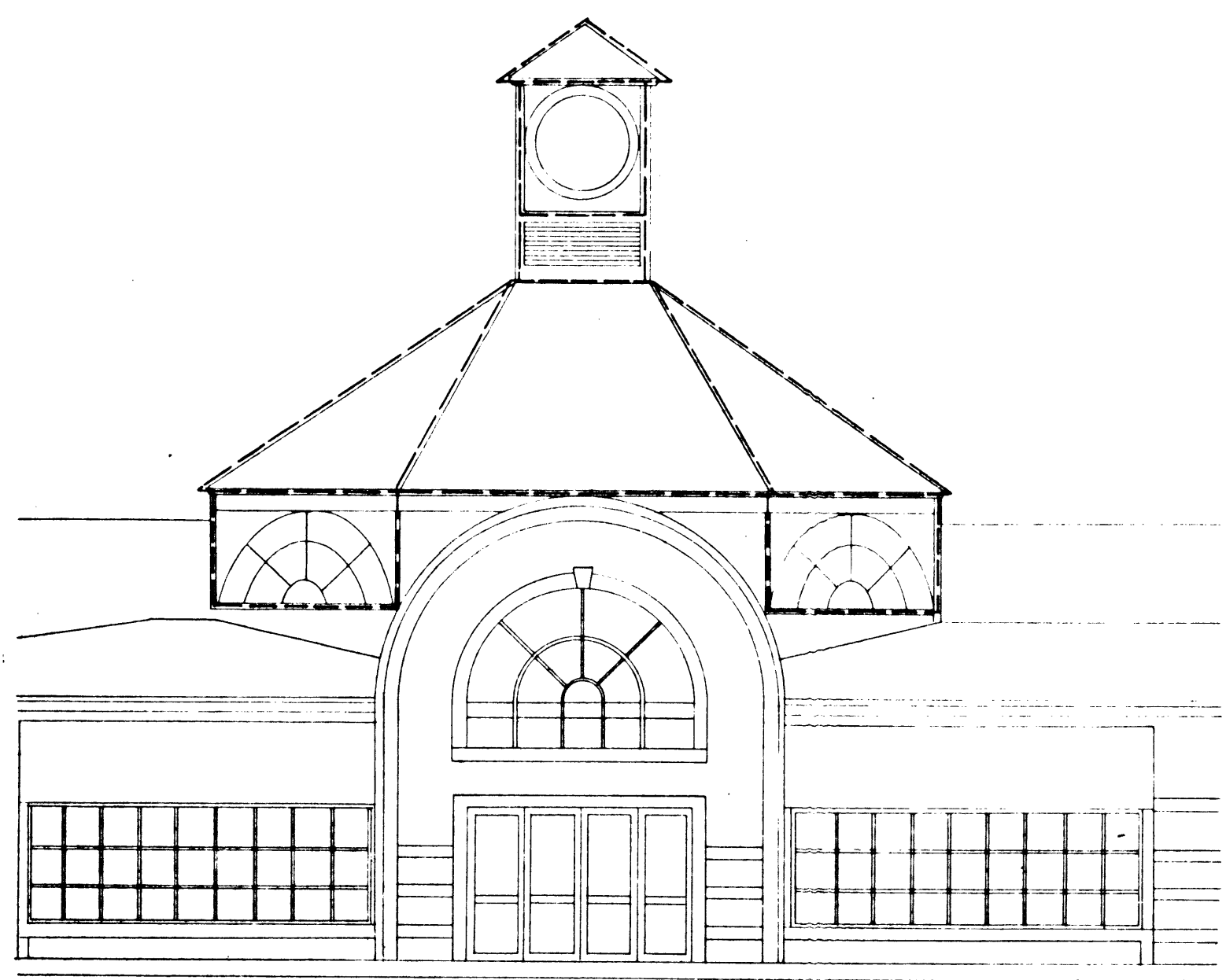
LEGEND

	TRANSFORMER 120V PRIMARY, 24 VOLT SEC.
	JUNCTION BOX - SIZE AS REQUIRED BY CODE.
	CLASS 2 CONVERSION MODULE - REQUIRED BY N.E.C.
	LOW VOLTAGE LIGHT TUBING - FIXTURE TYPE "Y"

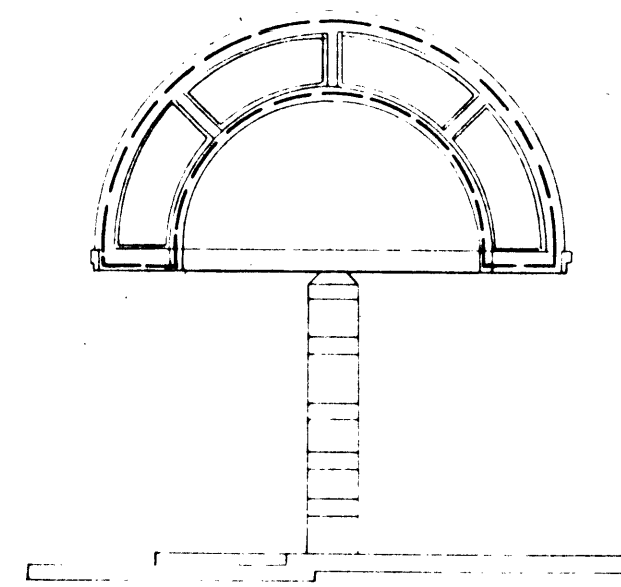
- NOTES**
- TOTAL LOW VOLTAGE SYSTEM 24 VOLT.
 - TRANSFORMER NO. 1 - 9-100 WATT CIRCUITS - 900 WATTS MAX.
 - TRANSFORMER NO. 2 - 9-100 WATT CIRCUITS - 900 WATTS MAX.
 - TRANSFORMER NO. 3 - 9-100 WATT CIRCUITS - 900 WATTS MAX.
 - TRANSFORMER NO. 4 - 9-100 WATT CIRCUITS - 900 WATTS MAX.
 - TRANSFORMER NO. 5 - 9-100 WATT CIRCUITS - 900 WATTS MAX.
 - FIXTURE TYPE "Y" - LIGHT TUBING W/LAMPS ON 4" CENTERS.
 - TRANSFORMER NO. 5 USED FOR AREAS SHOWN ON EAST & WEST ELEVATIONS.
- SPECIAL LIGHTING LAY-OUT WILL BE PROVIDED TO ELECTRICAL CONTRACTOR.



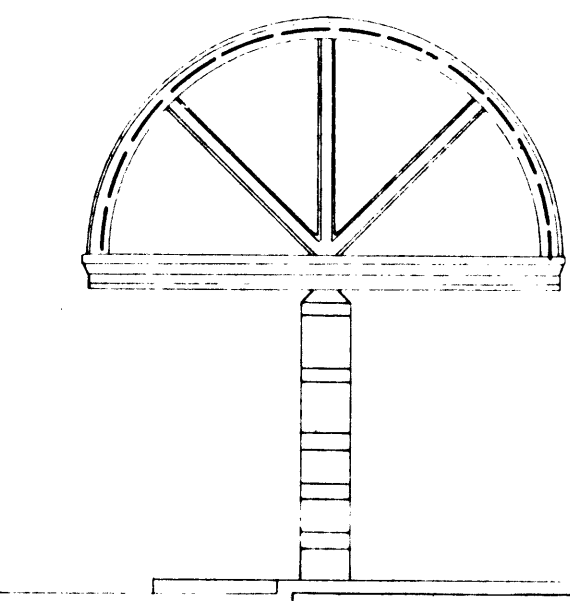
4 EAST ELEVATION
SCALE: 1/8" = 1'-0"



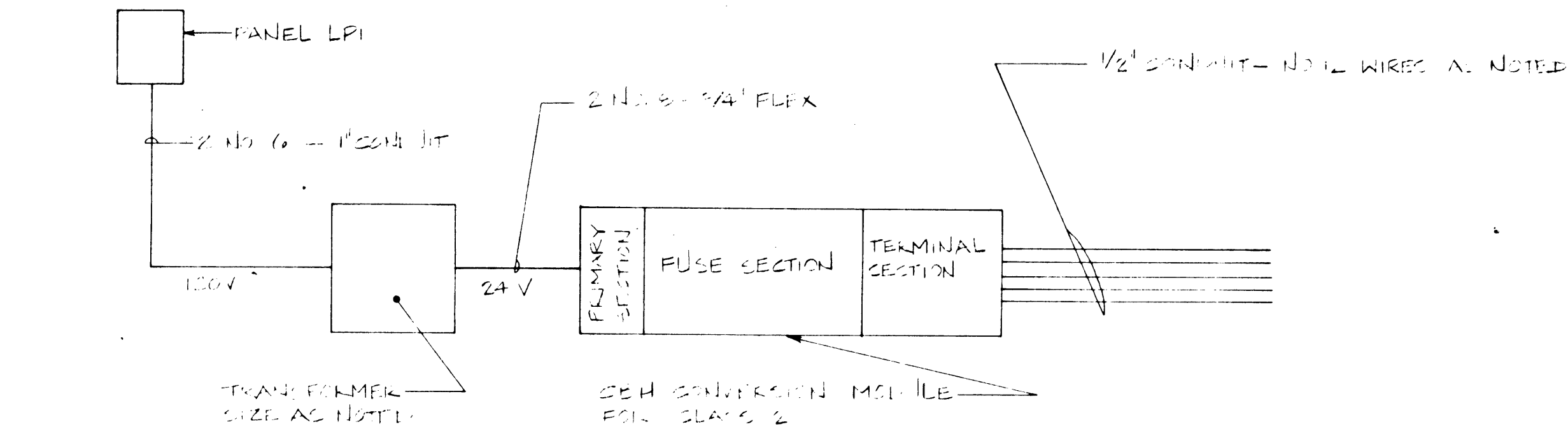
5 WEST ELEVATION
SCALE: 1/8" = 1'-0"



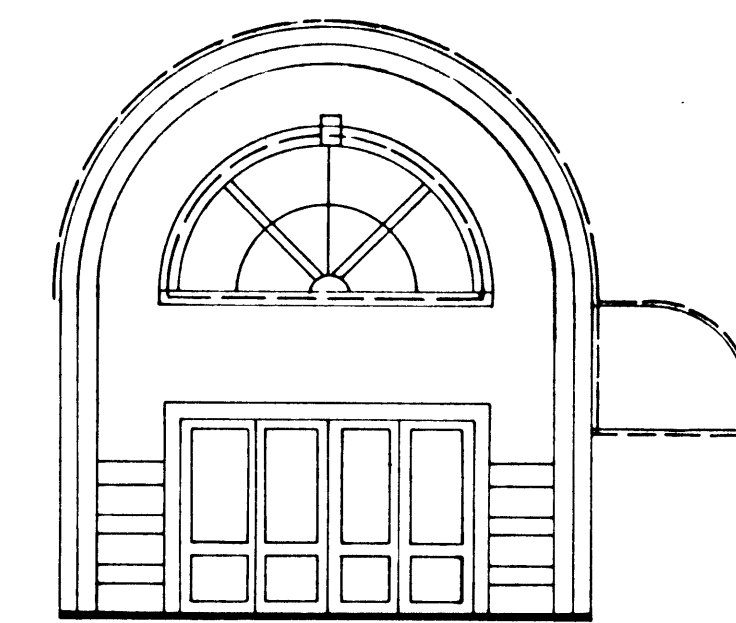
2 DETAIL
2 REQUIRED
SCALE: 1/8" = 1'-0"



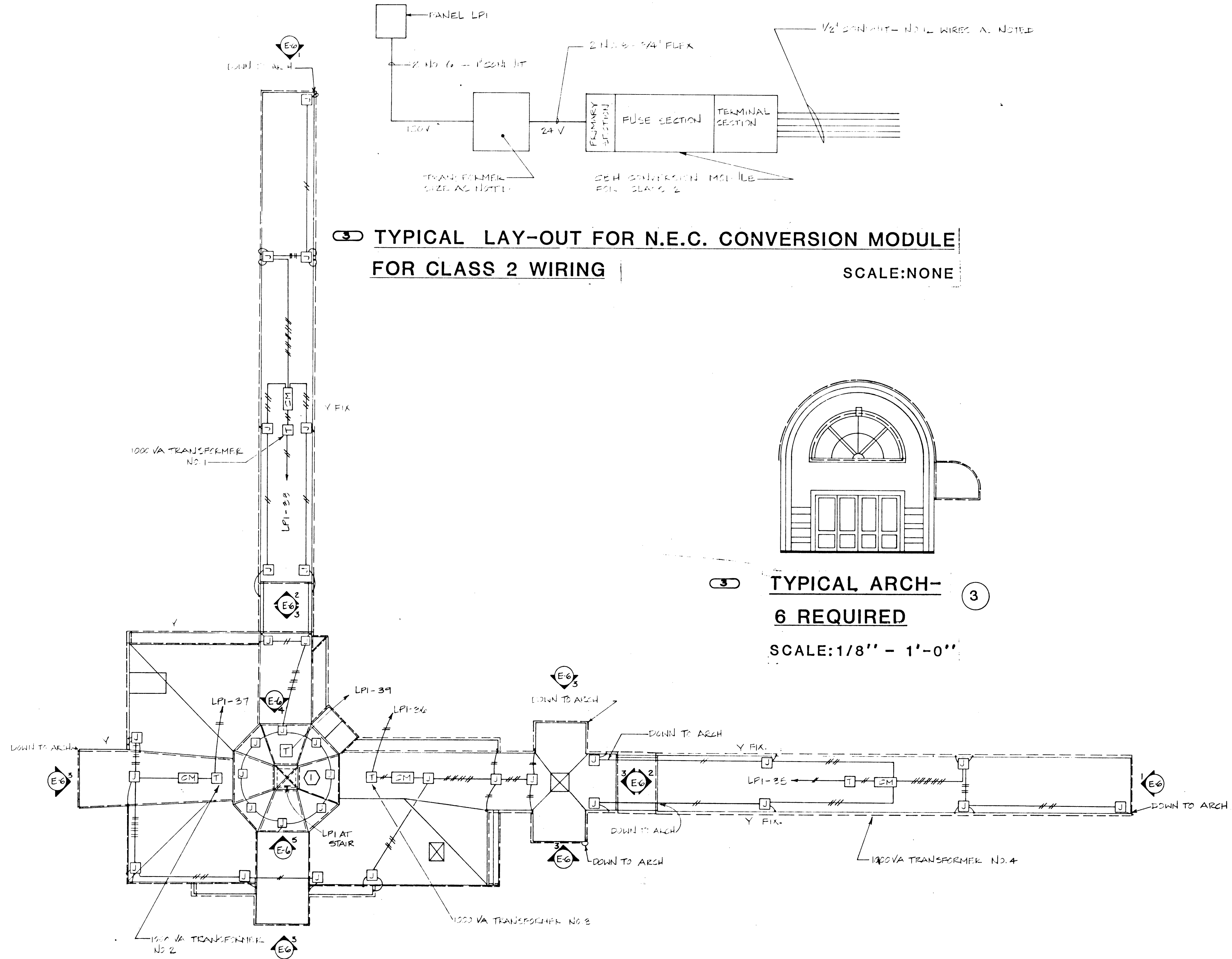
1 END ELEVATION
2 REQUIRED
SCALE: 1/8" = 1'-0"



3 TYPICAL LAY-OUT FOR N.E.C. CONVERSION MODULE FOR CLASS 2 WIRING
SCALE: NONE



3 TYPICAL ARCH-6 REQUIRED
SCALE: 1/8" = 1'-0"



3 EXTERIOR TIVOLI LIGHTING
SCALE: 1" = 20'-0"

NOTE: TYPE Y TIVOLI LIGHTS AROUND TOTAL PERIMETER OF ALL ROOFS.

3 DEDUCTIVE BID ITEM #3(1)
DELETE THE TIVOLI LIGHTING FIXTURES TYPE "Y", RELATED AUXILIARIES, ACCESSORIES AND BRANCH CIRCUIT WIRING AS SHOWN ON SHEET E-6. DO NOT DELETE THE CONDUIT, JUNCTION BOXES, BRANCH CIRCUIT BREAKERS, ETC. THESE ARE TO BE ROUGHED-IN ONLY.

DUNBAR WATERMAN CONSULTANTS
 DORRISKY MITCHELL GARLOCK Architects
 City of Las Vegas Transportation Center
 Downtown Las Vegas, Nevada
 SHEET 65 OF 65
 FILE NUMBER: 590-21