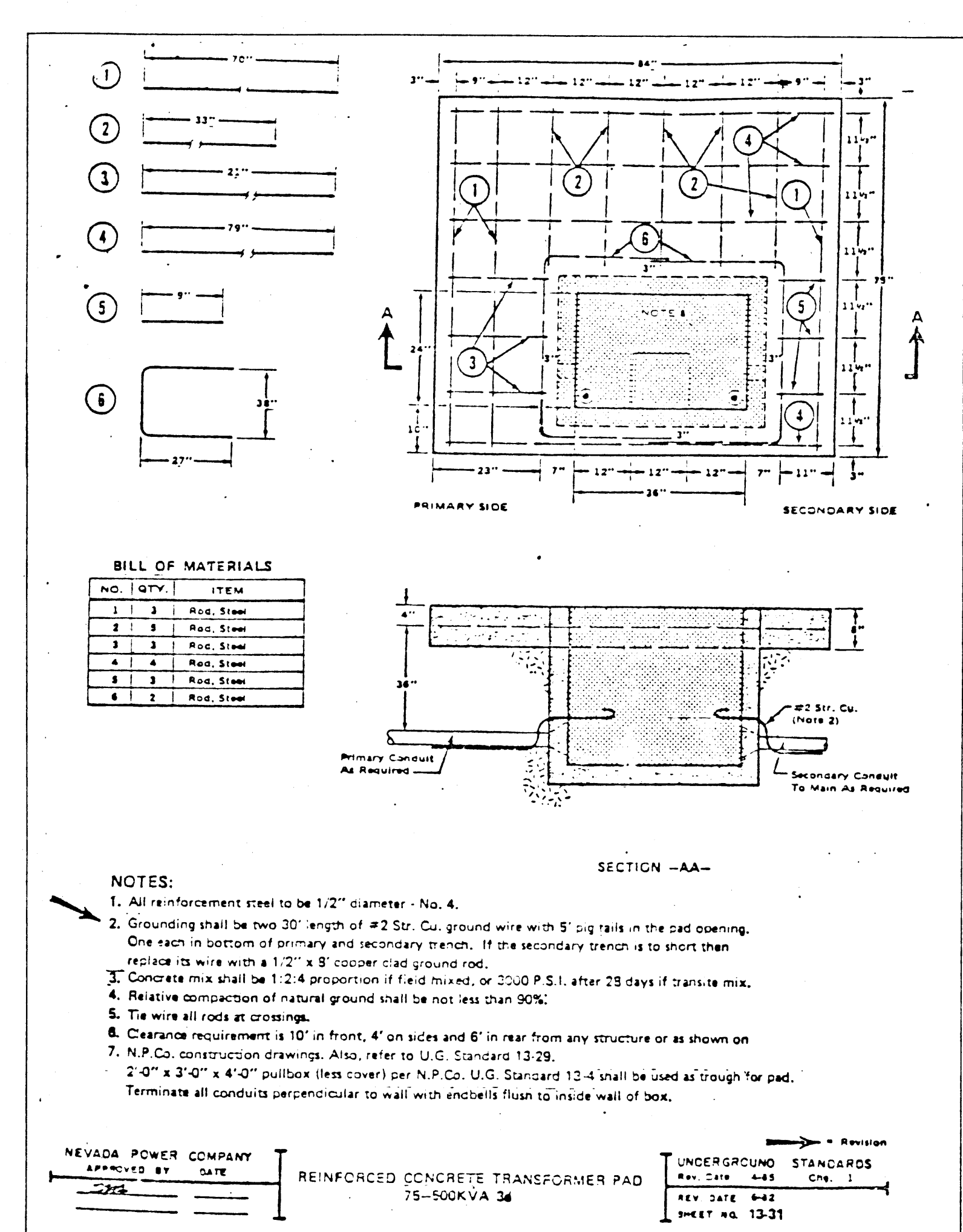


EQUIP #	USE	RATING	VOLTAGE	PANEL	FEEDER	AUX.	REMARKS
M-1	HEAT PUMP HP2	5.1 KW	208/3	PP2	2	D	
M-2	HEAT PUMP HP3	4.4 KW	208/3	PP2	2	D	
M-3	HEAT PUMP HP1	8.4 KW	208/3	PP2	3	D	
M-4	HEAT PUMP HP1	8.4 KW	208/3	PP2	3	D	
M-5	HEAT PUMP HP3	4.4 KW	208/3	PP2	2	D	
M-6	HEAT PUMP HP3	4.4 KW	208/3	PP2	2	D	
M-7	HEAT PUMP HP2	5.1 KW	208/3	PP2	2	D	
M-8	HEAT PUMP HP2	5.1 KW	208/3	PP2	2	D	
M-9	HEAT PUMP HP2	5.1 KW	208/3	PP2	2	D	
M-10	HEAT PUMP HP2	5.1 KW	208/3	PP1	2	D	
M-11	HEAT PUMP HP3	4.4 KW	208/3	PP1	2	D	
M-12	HEAT PUMP HP1	8.4 KW	208/3	PP1	3	D	
M-13	HEAT PUMP HP3	4.4 KW	208/3	PP1	2	D	
M-14	HEAT PUMP HP1	8.4 KW	208/3	PP1	3	D	
M-15	HEAT PUMP HP3	4.4 KW	208/3	PP1	2	D	
M-16	HEAT PUMP HP1	8.4 KW	208/3	PP1	3	D	
M-17	HEAT PUMP HP3	4.4 KW	208/3	PP1	2	D	
M-18	HEAT PUMP HP3	4.4 KW	208/3	PP1	2	D	
M-19	HEATING PUMP P1	7-1/2 HP	208/3	PP1	3	A	
M-20	HEATING PUMP P2	7-1/2 HP	208/3	PP1	3	A	
M-21	AIR HANDLER AH1	1-1/2 HP	208/3	PP1	2	A	
M-22	BOILER	--	120/1	LP3	1		
M-23	BOILER	--	120/1	LP3	1		
M-24	BOILER	--	120/1	LP3	1		
BCP	BOILER CONTROL PANEL	--	120/1	LP3	1		
M-25	COOLING TOWER FAN	15 HP	208/3	PP1	5		
M-26	COOLING TOWER PUMP	1-1/2 HP	208/3	PP1	2	B	
M-27	SUMP PUMP	1/3 HP	120/1	LP3	1		PLUG IN
M-28	EXHAUST FAN EF1	FRACT.	120/1	LP2	1	C	
M-29	EXHAUST FAN EF2	1/6 HP	120/1	LP2	1	C	
M-30	EXHAUST FAN EF3	1/15 HP	120/1	LP2	1	C	
M-31	WATER HEATER	9 KW	608/1	PP2	5	D	

**ELECTRICAL SYMBOLS**

- ⊕ EXIT LIGHT - ALL ON 1 CIRCUIT TO 'LP2'
- FLUORESCENT FIXTURE (2' X 4') RECESSED
- S SWITCH - 4" A.F.F. - BRONZE PLATE
- S<sub>K</sub> SWITCH - KEY OPERATED
- S<sub>D</sub> DIMMER SWITCH - 1200 W
- ⊖ GROUNDED DUPLEX RECEPTACLE - 12" A.F.F. OR 8" ABOVE COUNTER - BRONZE PLATE
- L ⊖ WEATHERPROOF & LOCKED DUPLEX RECEPTACLE
- WP ⊖ WEATHERPROOF DUPLEX RECEPTACLE
- ⊖ EQUIPMENT OUTLET
- ▲ TELEPHONE OUTLET - 12" A.F.F. OR AS NOTED
- ⊖ ELECTRICAL PANEL
- WALL MOUNTED FIXTURE
- ⊖ JUNCTION BOX
- ⊖ FIRE ALARM PULL STATION - FLUSH MTD.
- ⊖ FIRE ALARM HORN - FLUSH MTD.
- FS FLUSHER SENSOR
- SEH EMERGENCY SWITCH
- DF ⊖ DRINKING FOUNTAIN
- LIGHTING FIXTURE - INCANDESCENT OF H.I.D.
- FACP FIRE ALARM CONTROL PANEL
- 1 LAMP RECESSED FLUORESCENT
- FLUORESCENT STRIP - SEE DETAIL
- ⊖ THERMOSTAT OUTLET - THERMOSTAT BY OTHERS
- ⊖ SHUNT TRIP PUSH BUTTON
- TCP TEMPERATURE CONTROL PANEL
- ⊖ MICROPHONE OUTLET - J.B. ONLY
- ⊖ 8-INCH SPEAKER - J.B. ONLY
- ⊖ TV CAMERA OUTLET - J.B. ONLY
- ⊖ TIVOLI LIGHTING
- ⊖ CEILING FAN - 11" DIAMETER - PFD-22K/PFEW-52L0, 5" PENDANT
- ⊖ DUPLEX FLOOR RECEPTACLE - FLUSH DUPLEX SCREEN COVER (BRASS)



**TEMPERATURE CONTROL CONDUIT SCHEDULE**

1/2" CONDUIT	1/2" CONDUIT
TCP2 - M10	TCP1 - M1
M10 - M11	M1 - M2
M11 - M12	M2 - M3
M12 - M13	M3 - M4
M13 - M14	M4 - M5
M14 - M15	M5 - M6
M15 - M16	M6 - M7
M16 - M17	M7 - M8
M17 - M18	M8 - M9
TCP2 - M22	TCP1 - M29
M22 - M23	TCP1 - M28
M23 - M24	TCP1 - M30
TCP2 - M19	
M19 - M20	
TCP2 - M25	2" CONDUIT
M25 - M26	PANEL DCP - TCP1
TCP2 - M21	PANEL DCP - TCP2

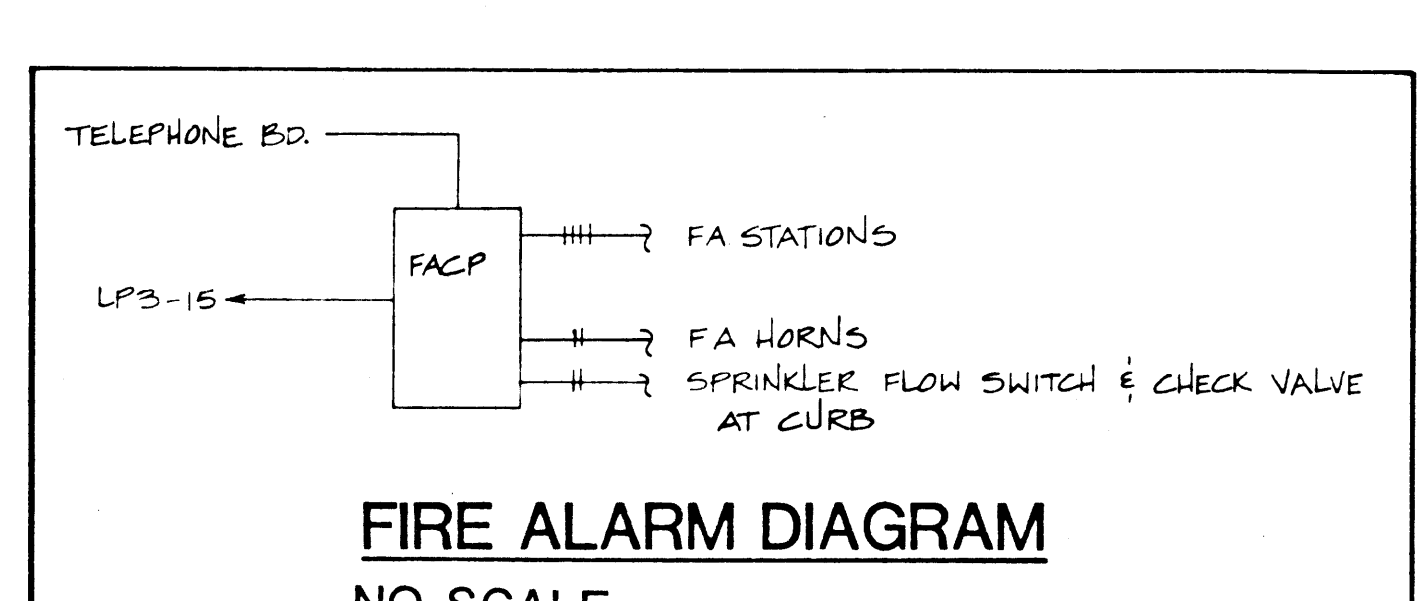
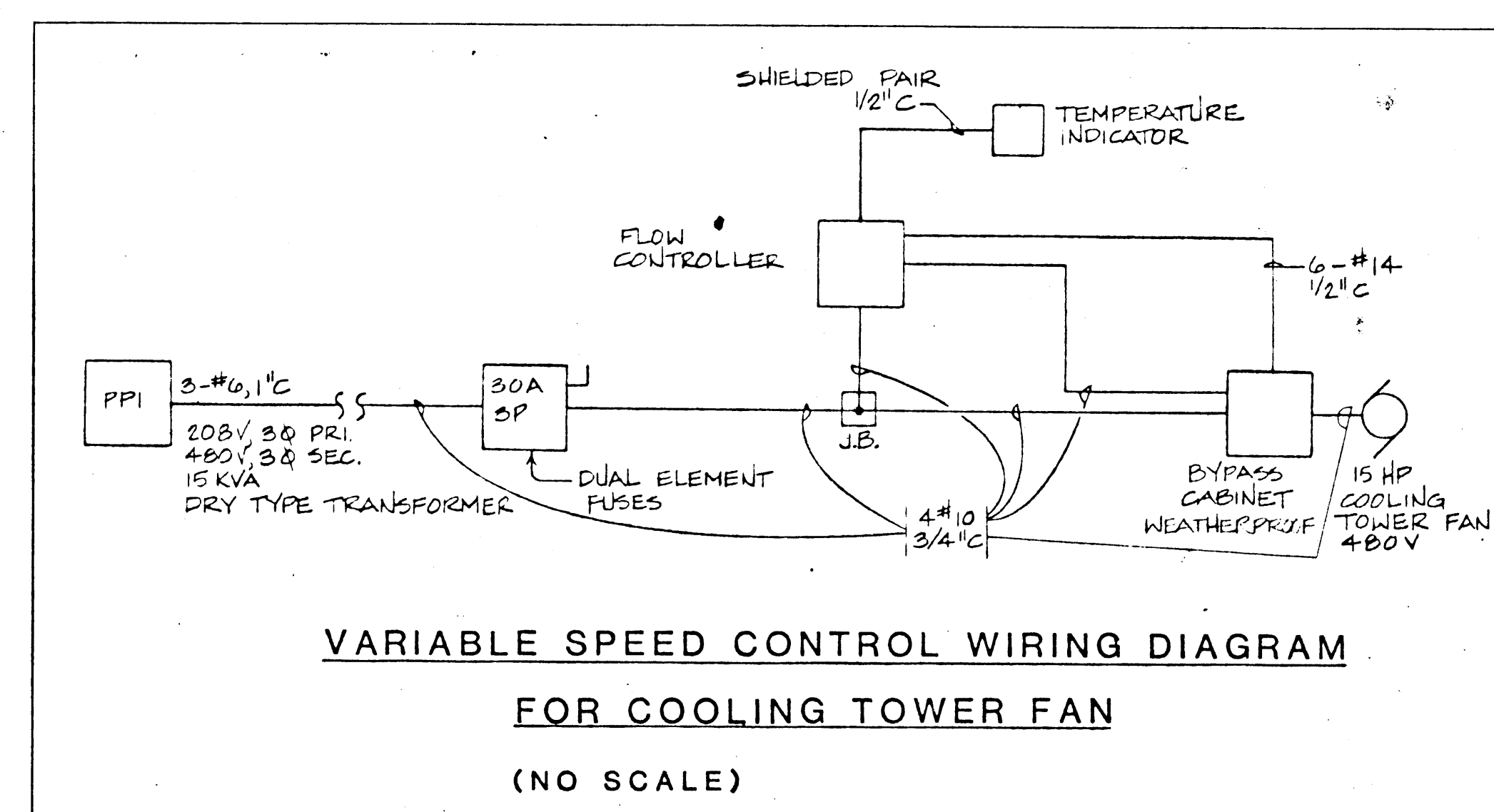
**1/2" CONDUIT**

FROM THERMOSTAT LOCATIONS WHERE SHOWN TO EQUIPMENT AS SHOWN ON PLANS.  
PROVIDE JUNCTION BOXES AT ENDS OF CONDUIT RUNS.

**FEEDER SCHEDULE**

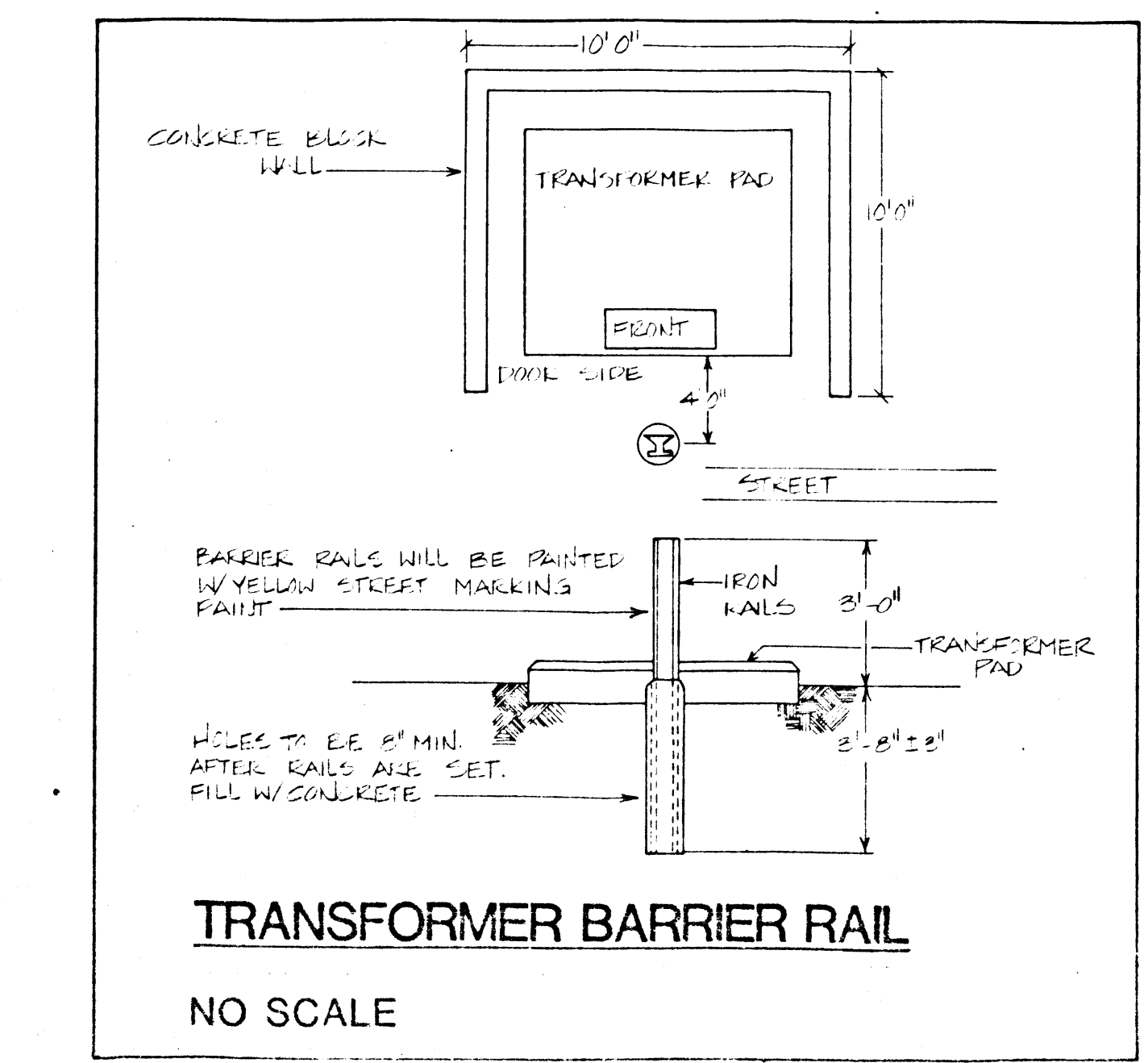
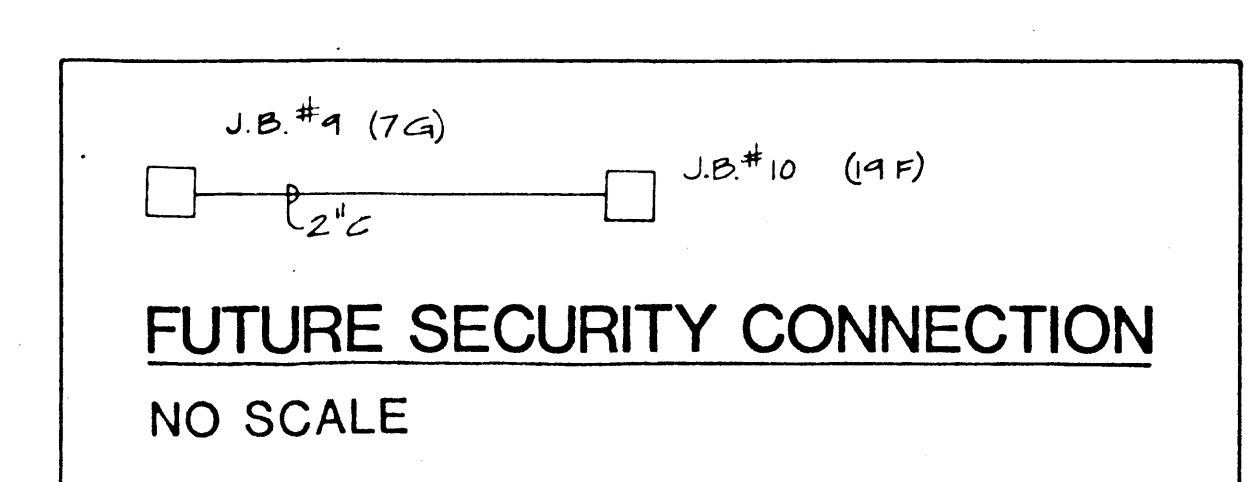
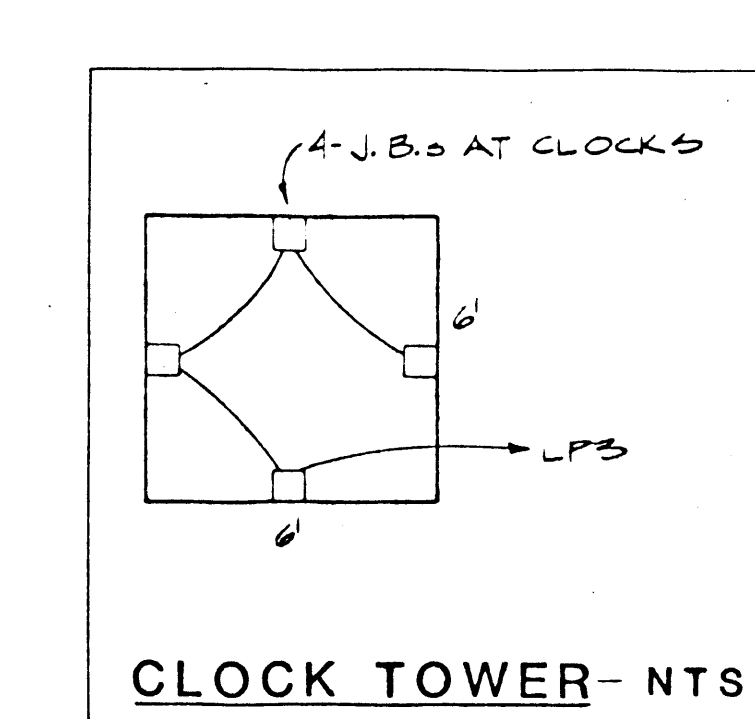
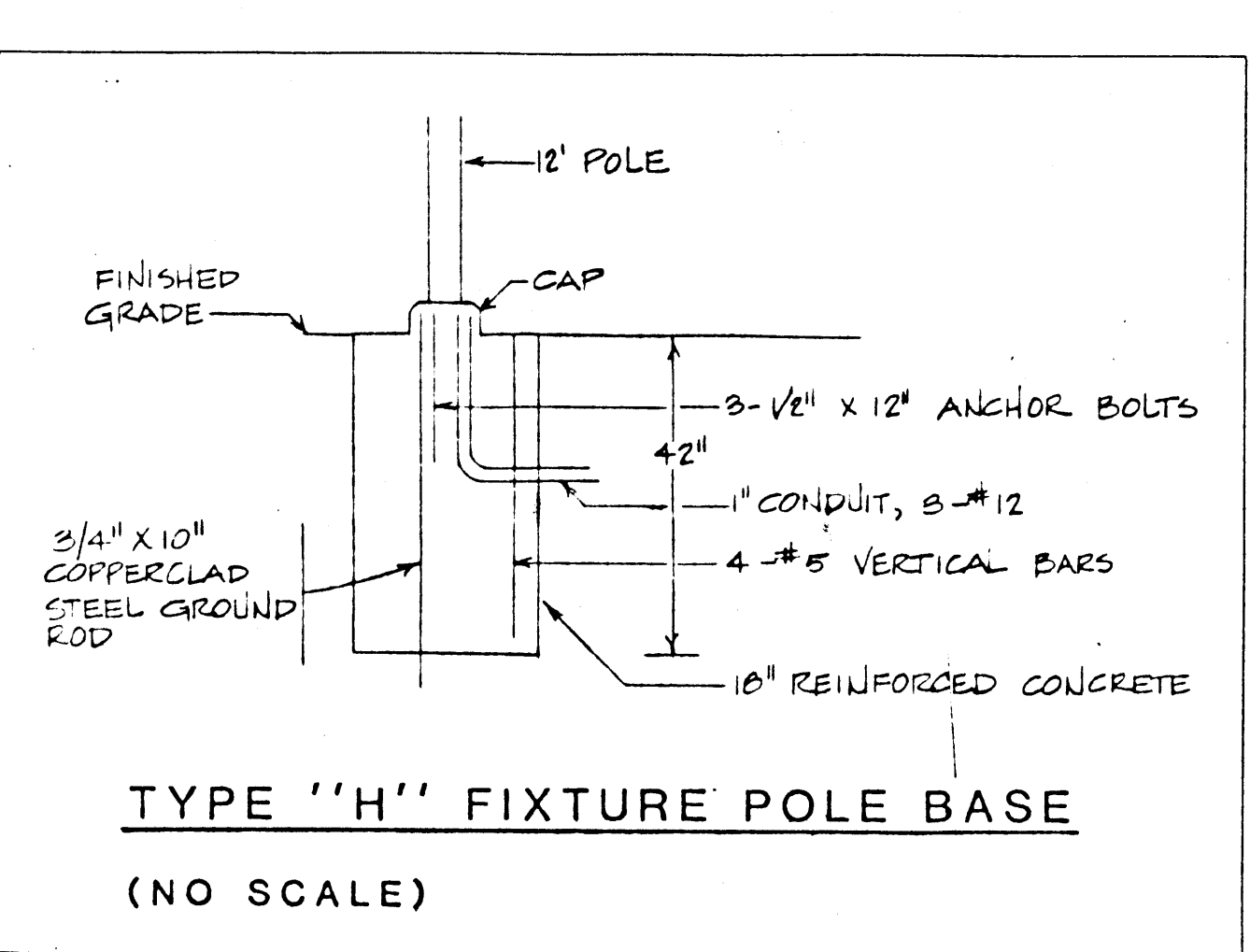
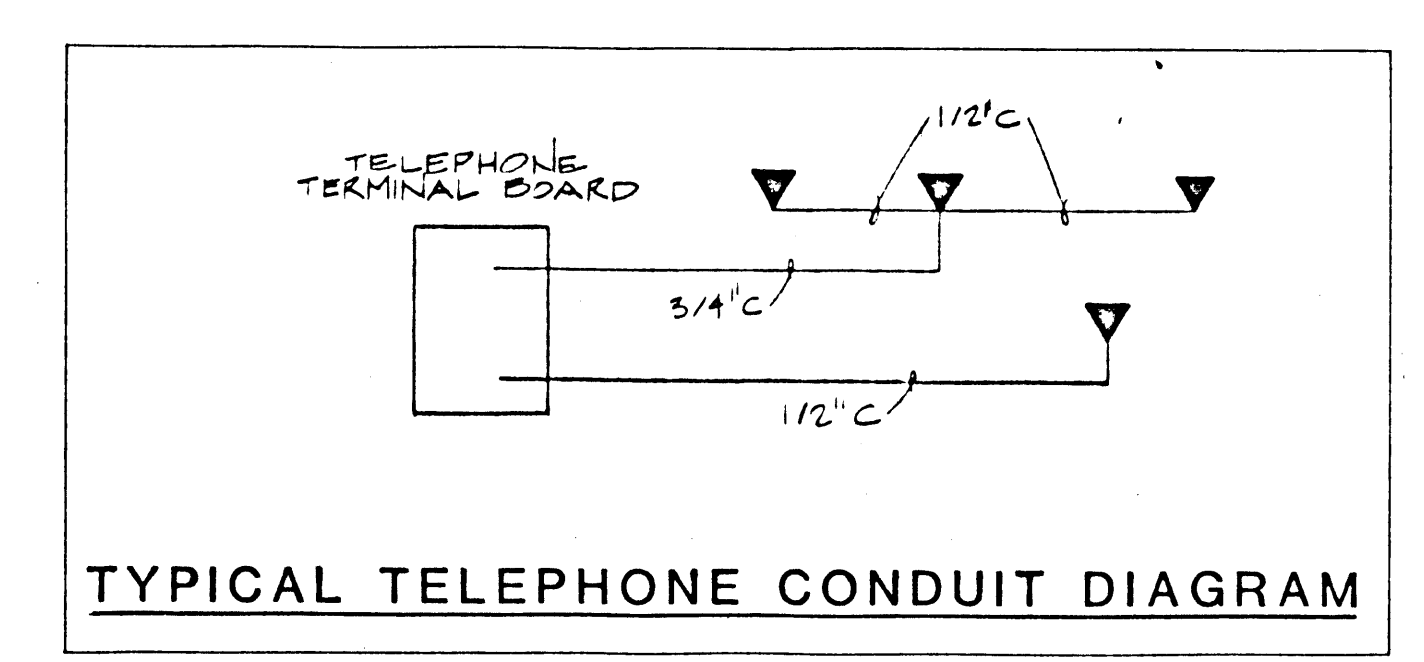
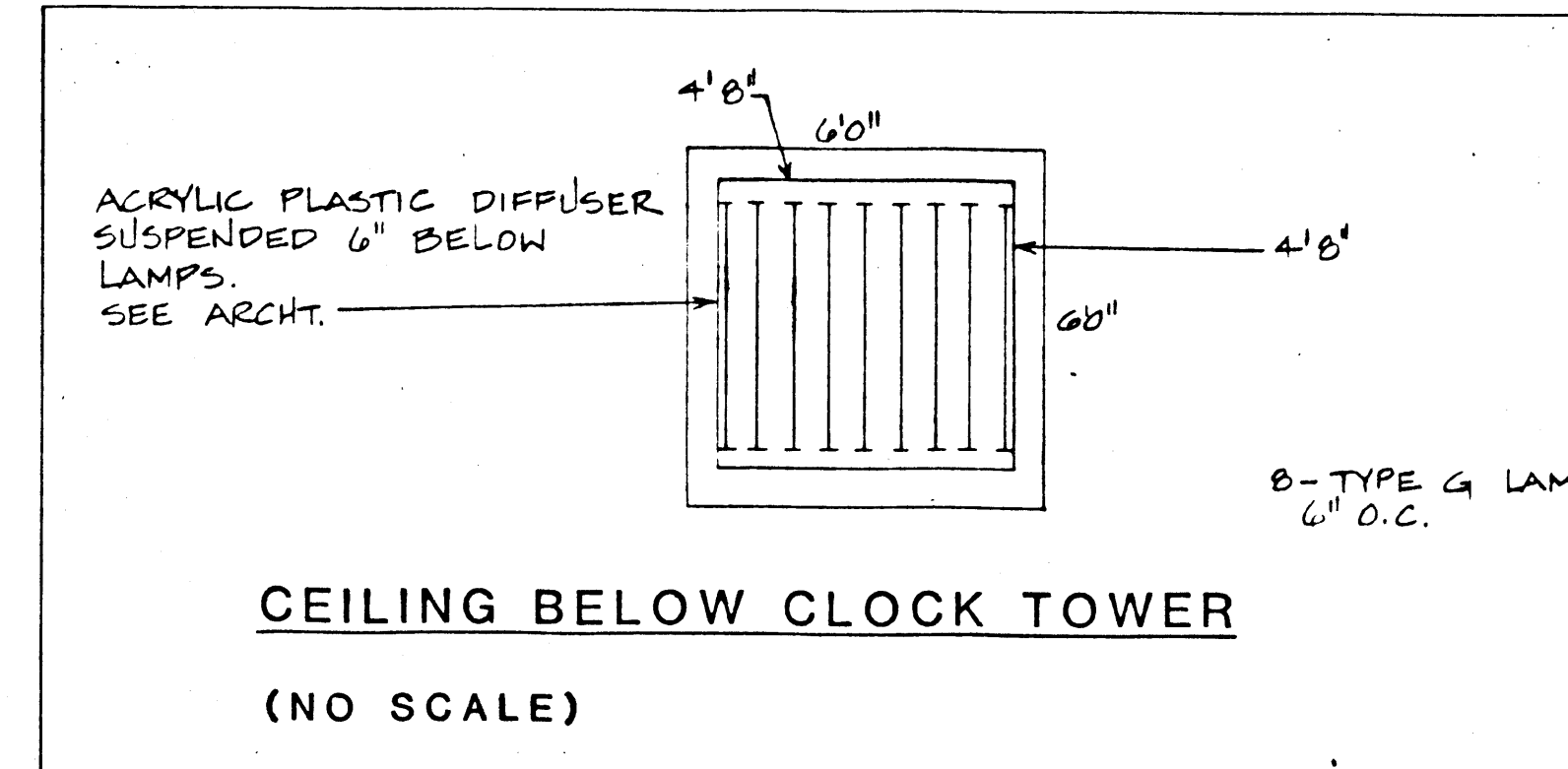
CIR #	WIRE	CONDUIT
1	2 - #12	3/4" C
2	3 - #12	3/4" C
3	3 - #10	3/4" C
4	3 - #8	3/4" C
5	3 - #6	1" C
6	3 - #4	1-1/4" C
7	4 - #1	1-1/2" C
8	4 - #1/0	2" C
9	4 - #3/0	2" C
10	4 - 500 MCM	3 - 3-1/2" C
11	12 - 500 MCM	3 - 3-1/2" C

- EQUIPMENT SCHEDULE AUXILIARIES**
- A - MAGNETIC STARTER - H-0-A PLUS DISC. AT UNIT.
  - B - MAGNETIC STARTER & DISCONNECT - H-0-A PLUS 3R AT UNIT.
  - C - MANUAL STARTER AT UNIT.
  - D - DISCONNECT AT UNIT.



**LIGHTING FIXTURE SCHEDULE**

TYPE	DESCRIPTION	LAMPS	MOUNTING	VOLTS	MFG. NO.	REMARKS
A	1' X 4' FLUORESCENT	2-F40CW/RS/ EW-11	RECESSED	120	KEENE XL1 FVA 240	EGG CARTON LOUVER
B	1' X 4' INDUSTRIAL FLUORESCENT	2-F40CW/RS/ EW-11	1' STEMS	120	KEENE SVI 242	
C	RECESSED INC. FLUORESCENT STRIP & DIFFUSER	75W R30	RECESSED	120	HALO H43T-438	
D	INDIVIDUAL 1 LAMP STRIP FLUORESCENT	1-F40CW/RS/ EW-11	RECESSED	120	DOWN CO. CEILING SYSTEMS	
E	INDIVIDUAL 1 LAMP STRIP FLUORESCENT	4-F40CW/RS/ EW-11 PER 8'	SURFACE	120	KEENE C-140RS-T OR C-140RS/HFP	ON SIGNAGE - 1 STRIP UP / 3 STRIP DOWN PROVIDE EGG CARTON LOUVER ON DOWN IN COVE
F	INDIVIDUAL 1 LAMP STRIP FLUORESCENT	1-F40CW/RS/ EW-11 PER 8'	SURFACE	120	KEENE C-140RS-T OR C-140RS/HFP	
G	INDIVIDUAL 1 LAMP STRIP FLUORESCENT	1-F40CW/RS/ EW-11 PER 4'	SURFACE	120	KEENE C-140RS-T OR C-140RS/HFP	BATTERY PACK EMERGENCY LIGHT
H	INDIVIDUAL 1 LAMP STRIP FLUORESCENT	1-F40CW/RS/ EW-11 PER 8'	SURFACE	120	KEENE C-140RS-T OR C-140RS/HFP	STRIPS 6" O.C. BELOW CLOCK CUPOLA FLOOR
G-1	TRAC LIGHTING	16 - 150W R40 SPOTS	CEILING	120	HALO 4 CIR TRAC 16 HALO L1543MB	4 FIXT/CIR
H	POLE LIGHT	5 - H3BL 5 GLOBES	POLE	120	WESTERN MA12/ 39049-5/D16	BLACK FINISH
J	WELL LIGHT	200W PAR 46 FLUORESCENT	RECESSED	120	KEENE DW46	IN GROUND
K	UP & DOWN CONE	2-150W/R40 PER FIXT	ON STRUCTURAL POLE	120	MARCO B1336 BRZ-L	2 FIXT. PER POLE 15' A.F.G.
M	WALL FLOOD	M4400B/C	BELOW GRADE	120	KEENE CMW 400 MA-GS-LN	IN PIT
N	CUPOLA SPOT	240PAR56 MFL	ON ROOF	120	KEENE 5600 EV	
P	ROOF FLOOD	240PAR56 F.	ON ROOF	120	KEENE 5600 EV	
R	OPAL GLOBE	300P525	SUSPENDED	120	HALO H2518	BOTTOM OF FIXT 8' ABOVE MEZZ. FL
S	WALL FLOOD	M4250 B0/C	IN PLANTER	120	KEENE CMW 250 MA-LN	
T	RECESSED INC.	150W R40 F	RECESSED	120	HALO H44TC-438	
U	CEILING FLOOD	150W R40 F	SURFACE	120	SHVELTER 11051	TOP OF SIGNAGE
V	OPAL GLOBE	A-100	WALL	120	PRESCOLITE WR-2	
W	DECORATIVE 5 GLOBE	5-H46DL-50/DX	ON ENTRANCE COLUMN	120	STENBERG 49 14789W/51473001P	
X	EXIT	W/FIXTURE	FLUSH	120	CARPENTER W2-LA	WITH BATTERY PACK
Y	TIVOLI LIGHTING	--	ON CANOPY	120	HARRIS RS-512	LIGHTS 4" O.C. - SHEET EG



**SCHEDULES & DETAILS**

**DUNHAM ASSOCIATES INC.**  
CONSULTING ENGINEERS

**DOBUSKY KITRELL GARLOCK Architects**  
3833 CAMBRIDGE BL. LAS VEGAS, NEVADA 89109 (702) 733-0453

**City of Las Vegas Transportation Las Vegas, Nevada**

**Center**

**Sheet E-5**