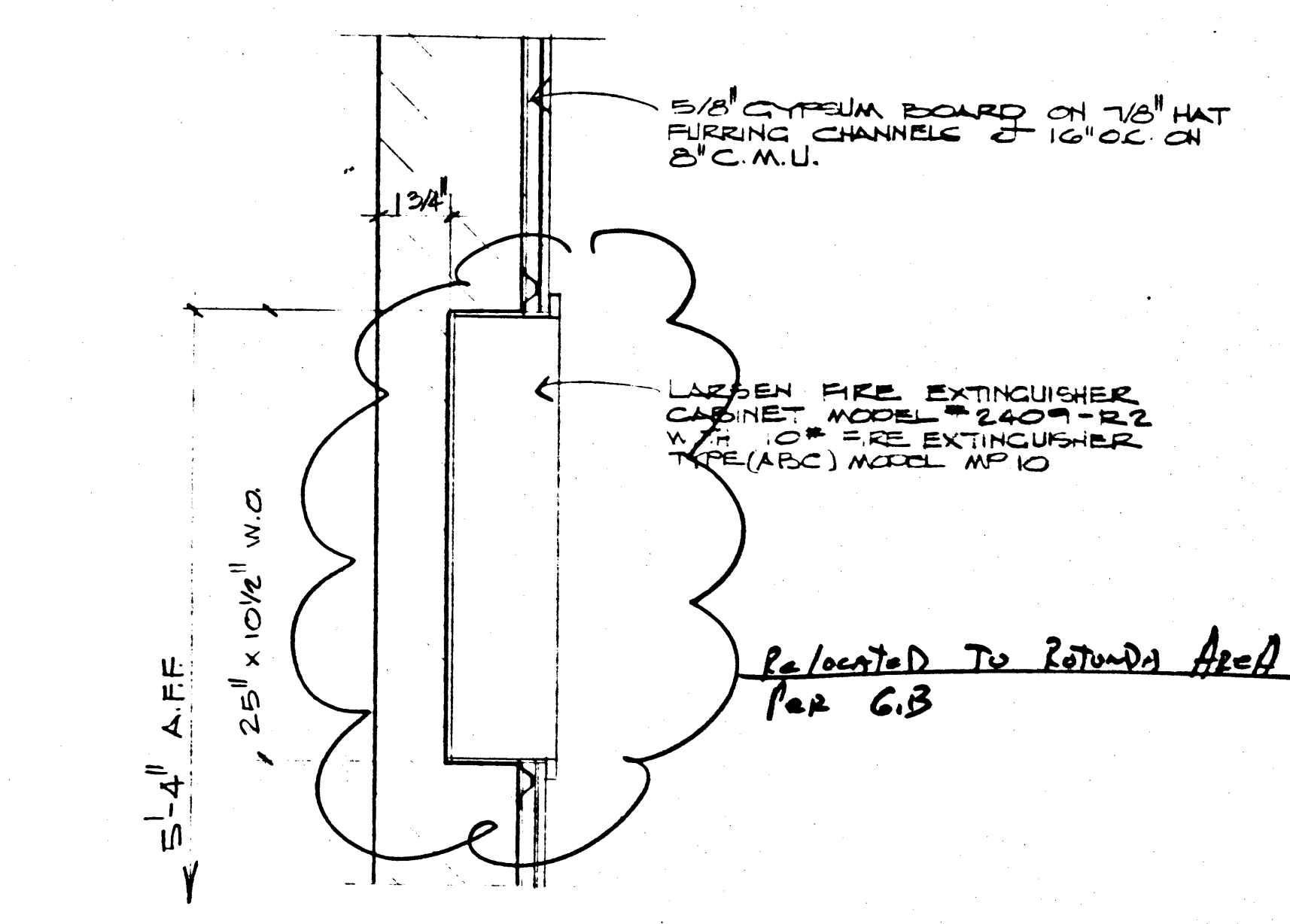
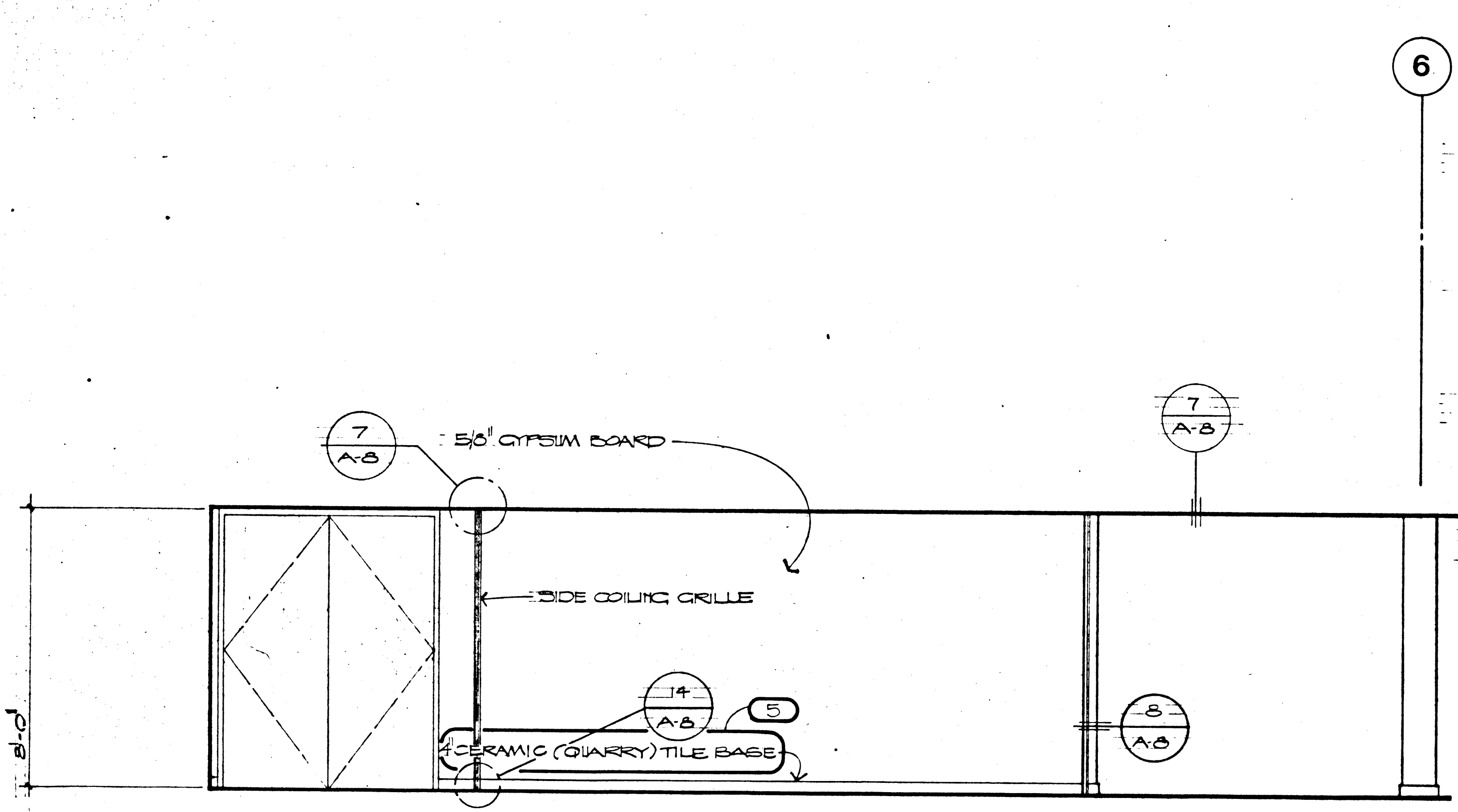


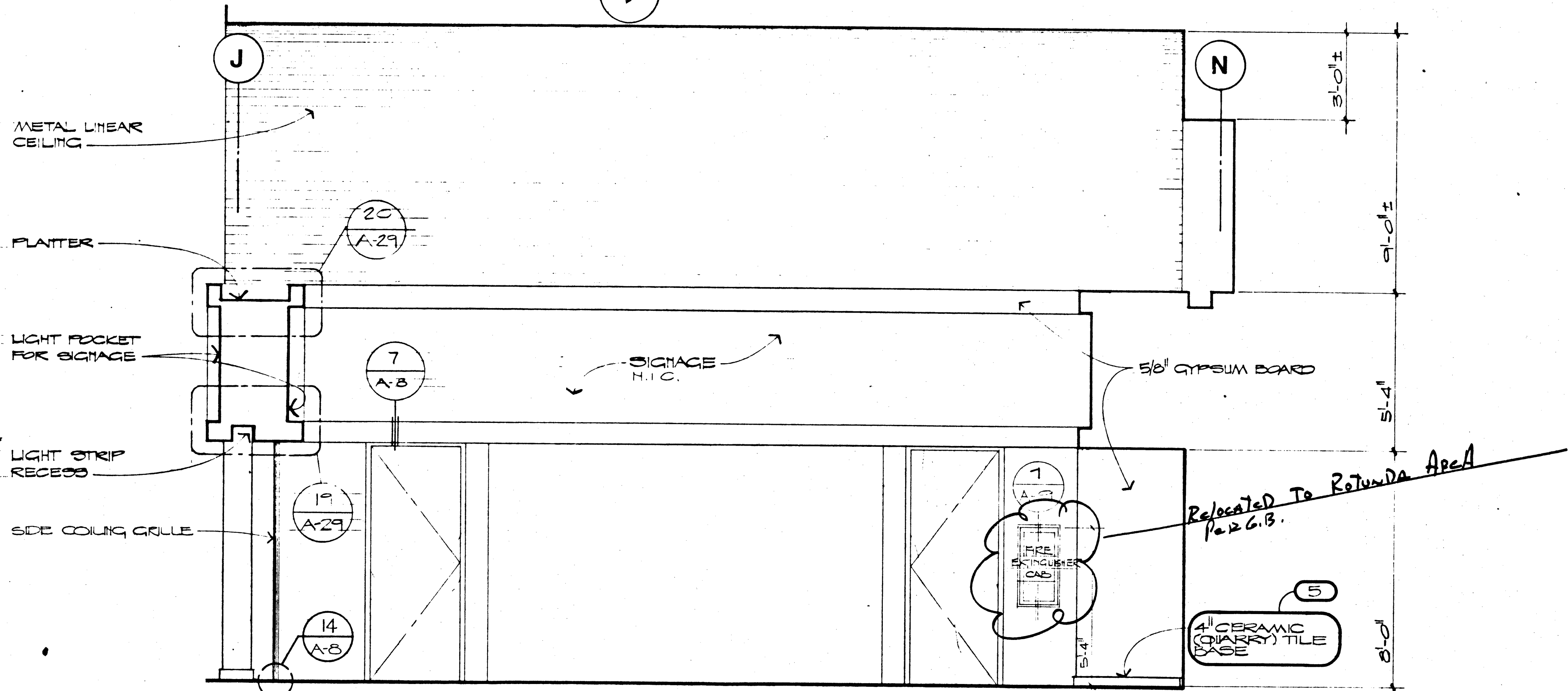
LOBBY #1 and ENTRY #2
SCALE: 3/8" = 1'-0"



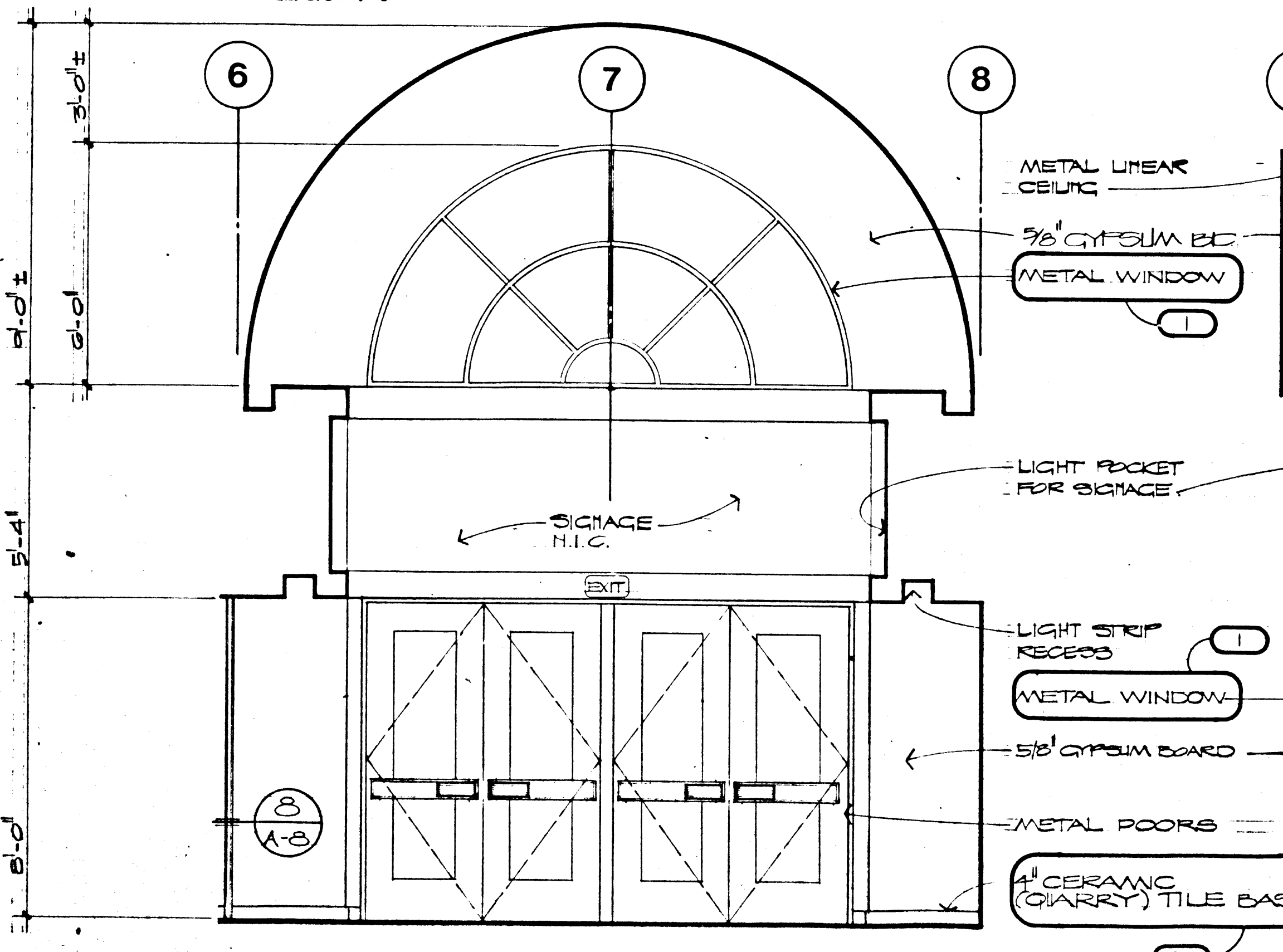
FIRE EXTINGUISHER CABINET
SCALE: 1 1/2" = 1'-0"



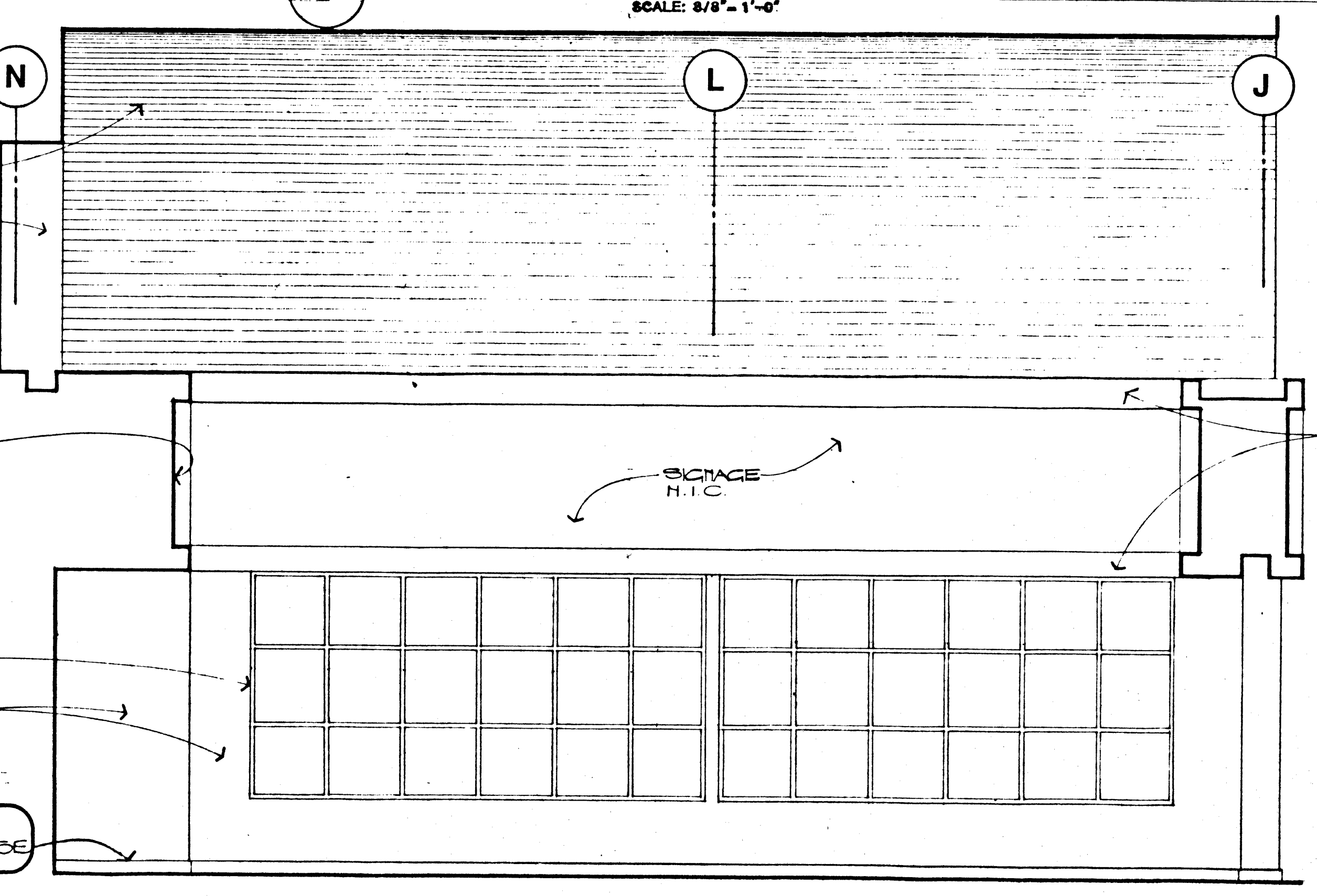
NEWSTAND and SNACK BAR
SCALE: 3/8" = 1'-0"



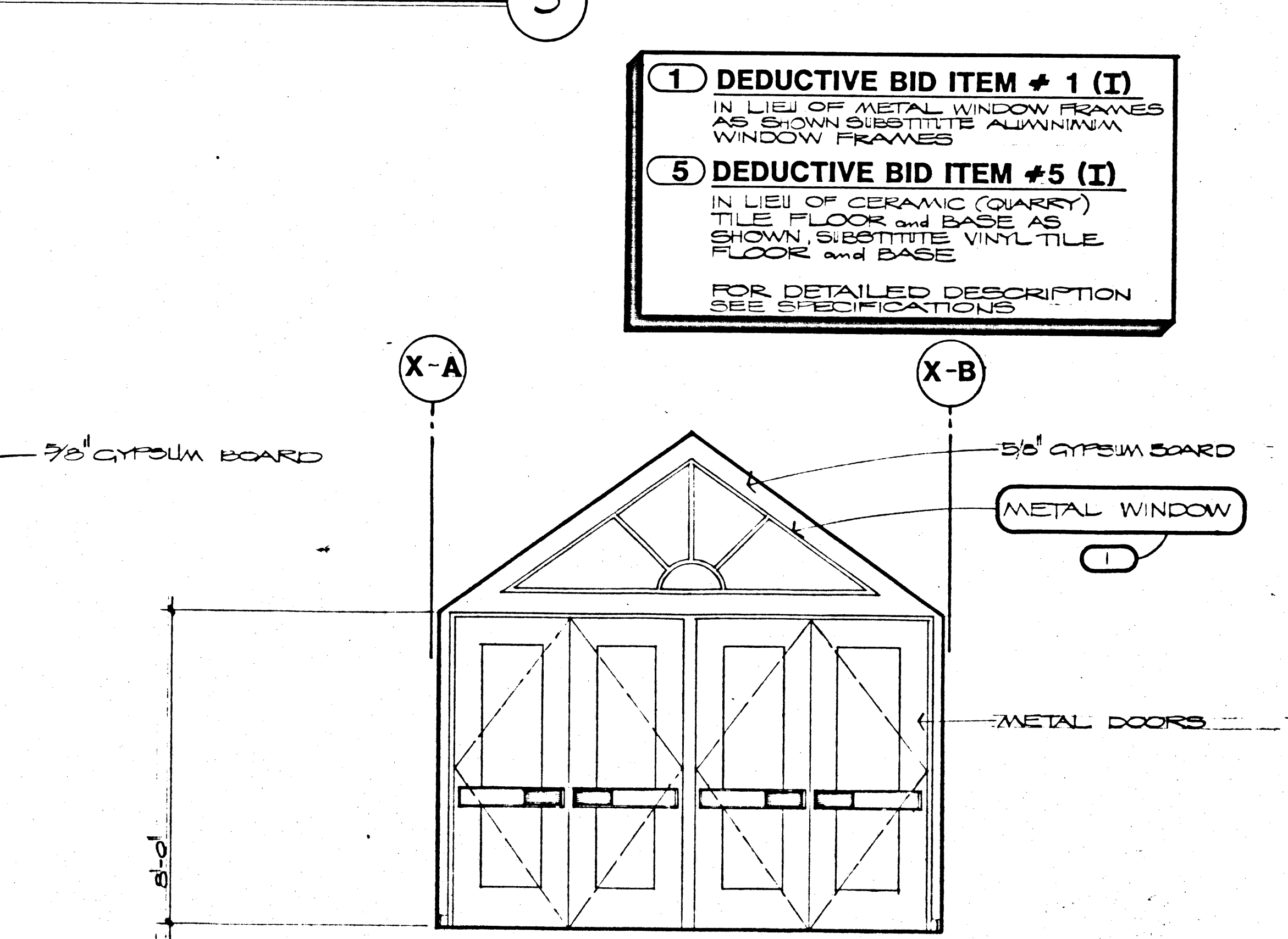
SNACK BAR
SCALE: 3/8" = 1'-0"



ENTRY and LOBBY #3
SCALE: 3/8" = 1'-0"



ENTRY and LOBBY #3
SCALE: 3/8" = 1'-0"



ENTRY #4
SCALE: 3/8" = 1'-0"

- 1 DEDUCTIVE BID ITEM # 1 (I)**
IN LIEU OF METAL WINDOW FRAMES AS SHOWN SUBSTITUTE ALUMINUM WINDOW FRAMES
 - 5 DEDUCTIVE BID ITEM # 5 (I)**
IN LIEU OF CERAMIC (QUARRY) TILE FLOOR and BASE AS SHOWN, SUBSTITUTE VINYL TILE FLOOR and BASE
- FOR DETAILED DESCRIPTION SEE SPECIFICATIONS

City of Las Vegas
 Downtown Transportation Center
 Las Vegas, Nevada

DOBUSKY KITRELL GARLOCK
 Architects
 800 CALIFORNIA ST., LAS VEGAS, NEVADA 89109 (702) 783-0455

SHEET
A-9
 OF 18 SHEETS
 FILE NUMBER
 150-21