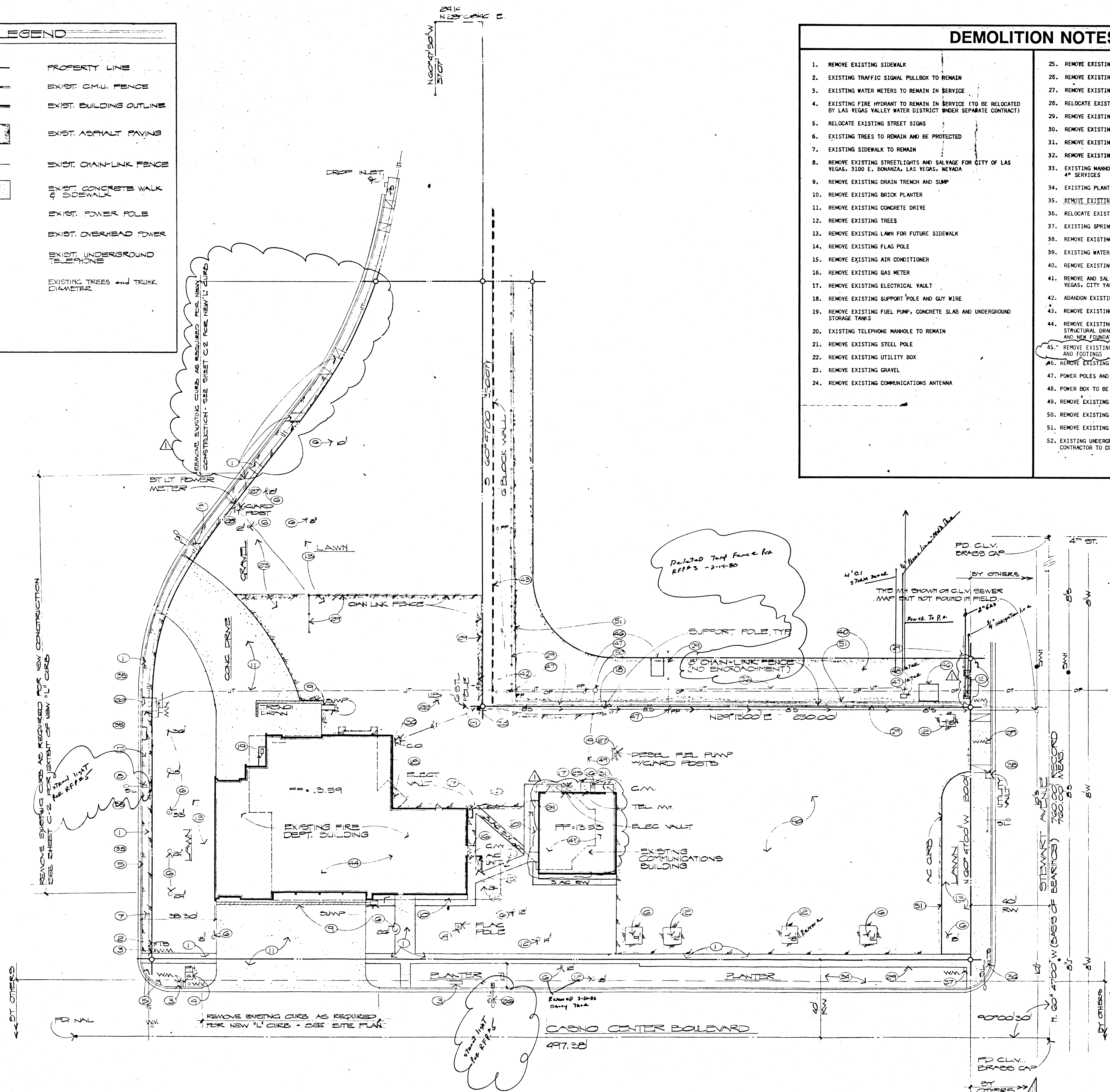


LEGEND	
---	PROPERTY LINE
---	EXIST. C.M.U. FENCE
---	EXIST. BUILDING OUTLINE
---	EXIST. ASPHALT PAVING
---	EXIST. CHAIN-LINK FENCE
---	EXIST. CONCRETE WALK AND SIDEWALK
PP	EXIST. POWER POLE
OP	EXIST. OVERHEAD POWER
UT	EXIST. UNDERGROUND TELEPHONE
○ 12"	EXISTING TREES AND TRUNK DIAMETER

DEMOLITION NOTES	
1.	REMOVE EXISTING SIDEWALK
2.	EXISTING TRAFFIC SIGNAL PULLBOX TO REMAIN
3.	EXISTING WATER METERS TO REMAIN IN SERVICE
4.	EXISTING FIRE HYDRANT TO REMAIN IN SERVICE (TO BE RELOCATED BY LAS VEGAS VALLEY WATER DISTRICT UNDER SEPARATE CONTRACT)
5.	RELOCATE EXISTING STREET SIGNS
6.	EXISTING TREES TO REMAIN AND BE PROTECTED
7.	EXISTING SIDEWALK TO REMAIN
8.	REMOVE EXISTING STREETLIGHTS AND SALVAGE FOR CITY OF LAS VEGAS, 3100 E. BONANZA, LAS VEGAS, NEVADA
9.	REMOVE EXISTING DRAIN TRENCH AND SUMP
10.	REMOVE EXISTING BRICK PLANTER
11.	REMOVE EXISTING CONCRETE DRIVE
12.	REMOVE EXISTING TREES
13.	REMOVE EXISTING LAWN FOR FUTURE SIDEWALK
14.	REMOVE EXISTING FLAG POLE
15.	REMOVE EXISTING AIR CONDITIONER
16.	REMOVE EXISTING GAS METER
17.	REMOVE EXISTING ELECTRICAL VAULT
18.	REMOVE EXISTING SUPPORT POLE AND GUY WIRE
19.	REMOVE EXISTING FUEL PUMP, CONCRETE SLAB AND UNDERGROUND STORAGE TANKS
20.	EXISTING TELEPHONE MANHOLE TO REMAIN
21.	REMOVE EXISTING STEEL POLE
22.	REMOVE EXISTING UTILITY BOX
23.	REMOVE EXISTING GRAVEL
24.	REMOVE EXISTING COMMUNICATIONS ANTENNA
25.	REMOVE EXISTING TELEPHONE MANHOLE
26.	REMOVE EXISTING STREETLIGHT (BY OTHERS)
27.	REMOVE EXISTING GUARD POSTS
28.	RELOCATE EXISTING STREETLIGHT POWER METER
29.	REMOVE EXISTING CHAIN LINK FENCE
30.	REMOVE EXISTING CLEANOUT BOX
31.	REMOVE EXISTING CONCRETE STOOP
32.	REMOVE EXISTING CONCRETE PATIO
33.	EXISTING MANHOLE TO REMAIN, ADJUST TO GRADE AND PLUG EXISTING 4" SERVICES
34.	EXISTING PLANTS AND PLANTER TO BE REMOVED BY OTHERS
35.	REMOVE EXISTING CONCRETE CURB
36.	RELOCATE EXISTING TRAFFIC SIGNAL PULL BOX (BY OTHERS)
37.	EXISTING SPRINKLER VALVE BOX TO REMAIN
38.	REMOVE EXISTING UTILITY VAULT (BY OTHERS)
39.	EXISTING WATER METER (BY OTHERS)
40.	REMOVE EXISTING A.C. PAVING DRIVE
41.	REMOVE AND SALVAGE ALL LOCKS AND LOCKSETS FOR CITY OF LAS VEGAS, CITY YARD, 3100 E. BONANZA, LAS VEGAS, NEVADA
42.	ABANDON EXISTING 4" SANITARY SEWER SERVICES
43.	REMOVE EXISTING 6" C.M.U. WALL
44.	REMOVE EXISTING STRUCTURES ABOVE EXISTING FLOOR SLABS, SEE STRUCTURAL DRAWINGS FOR EXISTING FLOOR SLAB REQUIREMENTS AND NEW FOUNDATION DETAILS
45.	REMOVE EXISTING STRUCTURE INCLUDING UNDERGROUND TRENCHES AND FOOTINGS
46.	REMOVE EXISTING STORAGE
47.	POWER POLES AND OVERHEAD WIRES TO BE REMOVED BY OTHERS.
48.	POWER BOX TO BE REMOVED BY OTHERS.
49.	REMOVE EXISTING TELEPHONE LINE.
50.	REMOVE EXISTING TELEPHONE MANHOLE.
51.	REMOVE EXISTING ASPHALT CURB.
52.	EXISTING UNDERGROUND TELEPHONE CABLE TO BE REMOVED BY CENTEL CONTRACTOR TO COORDINATE WITH CENTEL.



DEMOLITION SITE PLAN
SCALE: 1" = 20'-0"

11-14-85 - ISSUED FOR APPROVAL #1

DATE	11-14-85
DRAWN	AK
CHECKED	AK
DATE	11-14-85
BY	AK

DOBROSKY KITTRELL GARLOCK
Architects
1008 CALLENDOR ST. LAS VEGAS, NEVADA 89101
(702) 738-0488



City of Las Vegas
Center
Downtown
Transportation
Las Vegas, Nevada

HEET
A-1
DATE
11-14-85
FILE NUMBER
370-85

Plotting Date - 11-15-85 TELERAP DRAWING FILE