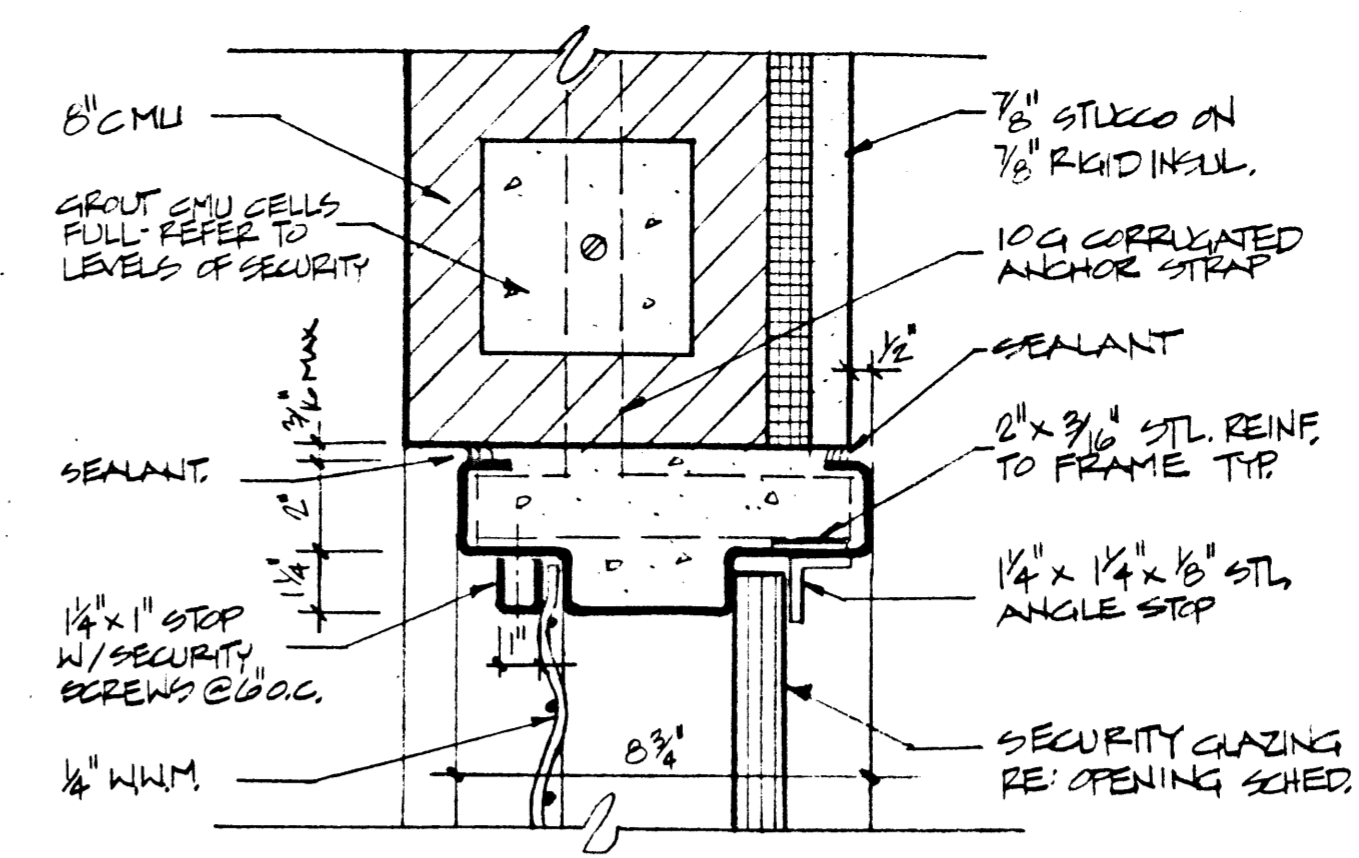


DETENTION OPENING SCHEDULE - LAS VEGAS DETENTION CENTER

DOOR/ OPEN'G #	FROM	TO	DOOR OR RELITE								FRAME							Hd we Set	FR Mins	Remarks				
			W	H	T	Matl	Ga	G	Elev	GL	Matl	Ga	G	Elev	GL	Sill	Jamb				Head			
2.1-D	EXT. CELL WINDOW		4	1		SHM		X						SHM	12	X	2.1	GL1	3/DS10	2/DS10	1/DS10			
2.2-D	SALLYPORT	DAYROOM	3	4										SHM	12		2.2	GL1	11/DS10	11/DS10	13/DS10			
2.4-D	CONTROL	DAYROOM	6	4										SHM	12		2.4	GL1	11/DS10	14/DS12	13/DS10			
2.5-D	CONTROL	DAYROOM	6	4										SHM	12		2.5	GL1	11/DS10	14/DS12	13/DS10			
2.6-D	EXT. SOUTH CELL WINDOW		4	1										SHM	12	X	2.6	GL1	1/DS8	1/DS8	1/DS8			
SG2.01	PEDESTRIAN GATE		4	7																			23	
SG2.02	PEDESTRIAN GATE		4	7																			23	
SG2.03	VEHICLE GATE		12	14																			21	
SG2.04	PEDESTRIAN GATE		4	7																			21	
SG2.05A	VEHICLE GATE		14	14																			20	
SG2.05B	PEDESTRIAN GATE		4	8																			23	
SG2.06	PEDESTRIAN GATE		4	8																			22	

MALE HOUSING UNIT, FIRST FLOOR

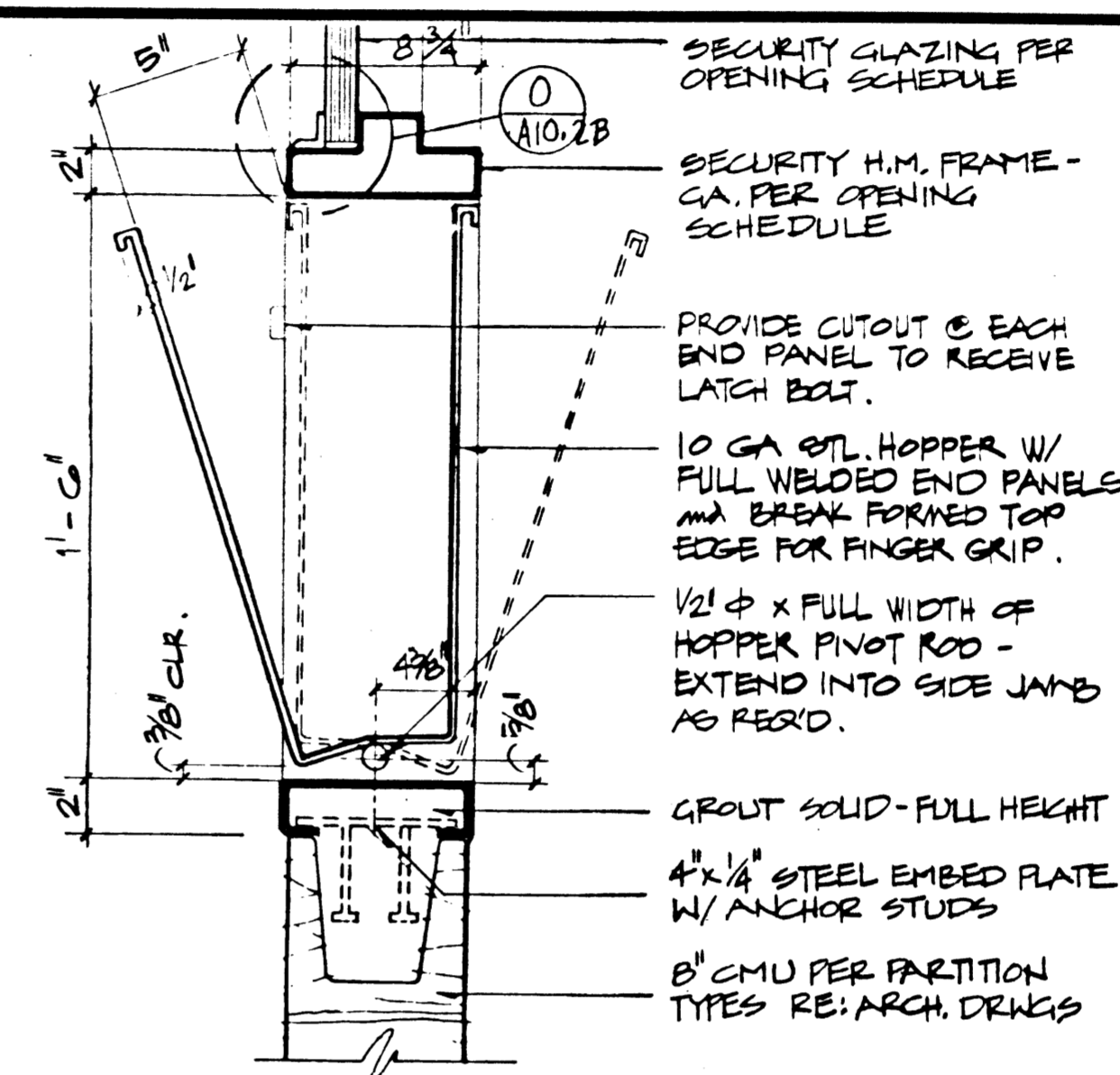
300-D	EXTERIOR	DAYROOM	3	7	2"	SHM	16	X	D3	GL1	SHM	14	X	B			8/DS10	6/DS10	5/DS10	6			
301-D	EXTERIOR	DAYROOM	3	7	2"	SHM	16	X	D3	GL1	SHM	14	X	B			8/DS10	6/DS10	5/DS10	6			
302-D	CELL	DAYROOM	3	7	2"	SHM	16		D6A		SHM	14		A				10/DS10	9/DS10	1			PB, BOTH SIDES
303-D	CELL	DAYROOM	3	7	2"	SHM	16		D6A		SHM	14		A				10/DS10	9/DS10	1			PB, BOTH SIDES
304-D	CELL	DAYROOM	3	7	2"	SHM	16		D6A		SHM	14		A				10/DS10	9/DS10	1			PB, BOTH SIDES
305-D	CELL	DAYROOM	3	7	2"	SHM	16		D6A		SHM	14		A				10/DS10	9/DS10	1			PB, BOTH SIDES
306-D	CELL	DAYROOM	3	7	2"	SHM	16		D6A		SHM	14		A				10/DS10	9/DS10	1			PB, BOTH SIDES
307-D	CELL	DAYROOM	3	7	2"	SHM	16		D6A		SHM	14		A				10/DS10	9/DS10	1			PB, BOTH SIDES
308-D	CELL	DAYROOM	3	7	2"	SHM	16		D6A		SHM	14		A				10/DS10	9/DS10	1			PB, BOTH SIDES
309-D	CELL	DAYROOM	3	7	2"	SHM	16		D6A		SHM	14		A				10/DS10	9/DS10	1			PB, BOTH SIDES
310-D	CELL	DAYROOM	3	7	2"	SHM	16		D6A		SHM	14		A				10/DS10	9/DS10	1			PB, BOTH SIDES
311-D	CELL	DAYROOM	3	7	2"	SHM	16		D6A		SHM	14		A				10/DS10	9/DS10	1			PB, BOTH SIDES
314-D	CELL	DAYROOM	3	7	2"	SHM	16		D6A		SHM	14		A				10/DS10	9/DS10	1			PB, BOTH SIDES
313-D	CELL	DAYROOM	3	7	2"	SHM	16		D6A		SHM	14		A				10/DS10	9/DS10	1			PB, BOTH SIDES
316-D	CELL	DAYROOM	3	7	2"	SHM	16		D6A		SHM	14		A				10/DS10	9/DS10	1			PB, BOTH SIDES
315-D	CELL	DAYROOM	3	7	2"	SHM	16		D6A		SHM	14		A				10/DS10	9/DS10	1			PB, BOTH SIDES
316-D	CELL	DAYROOM	3	7	2"	SHM	16		D6A		SHM	14		A				10/DS10	9/DS10	1			PB, BOTH SIDES
317-D	CELL	DAYROOM	3	7	2"	SHM	16		D6A		SHM	14		A				10/DS10	9/DS10	1			PB, BOTH SIDES
318-D	CELL	DAYROOM	3	7	2"	SHM	16		D6A		SHM	14		A				10/DS10	9/DS10	1			PB, BOTH SIDES
319-D	CELL	DAYROOM	3	7	2"	SHM	16		D6A		SHM	14		A				10/DS10	9/DS10	1			PB, BOTH SIDES
320-D	CELL	DAYROOM	3	7	2"	SHM	16		D6A		SHM	14		A				10/DS10	9/DS10	1			PB, BOTH SIDES
321-D	CELL	DAYROOM	3	7	2"	SHM	16		D6A		SHM	14		A				10/DS10	9/DS10	1			PB, BOTH SIDES
322-D	CELL	DAYROOM	3	7	2"	SHM	16		D6A		SHM	14		A				10/DS10	9/DS10	1			PB, BOTH SIDES
323-D	CELL	DAYROOM	3	7	2"	SHM	16		D6A		SHM	14		A				10/DS10	9/DS10	1			PB, BOTH SIDES
324-D	CELL	DAYROOM	3	7	2"	SHM	16		D6A		SHM	14		A				10/DS10	9/DS10	1			PB, BOTH SIDES
325-D	CELL	DAYROOM	3	7	2"	SHM	16		D6A		SHM	14		A				10/DS10	9/DS10	1			PB, BOTH SIDES
326-D	CELL	DAYROOM	3	7	2"	SHM	16		D6A		SHM	14		A				10/DS10	9/DS10	1			PB, BOTH SIDES
329-D	EXTERIOR	ELECTRICAL	3	7	2"	SHM	16	X	D10		SHM	14	X	A			8/DS10	6/DS10	5/DS10	16			w/14"x14" Sec. Grille each leaf
334-D	CELL	DAYROOM	3	7	2"	SHM	16		D6A		SHM	14		A				10/DS10	9/DS10	1			PB, BOTH SIDES
335-D	CELL	DAYROOM	3	7	2"	SHM	16		D6A		SHM	14		A				10/DS10	9/DS10	1			PB, BOTH SIDES
336-D	CELL	DAYROOM	3	7	2"	SHM	16		D6A		SHM	14		A				10/DS10	9/DS10	1			PB, BOTH SIDES
337-D	CELL	DAYROOM	3	7	2"	SHM	16		D6A		SHM	14		A				10/DS10	9/DS10	1			PB, BOTH SIDES
338-D	CELL	DAYROOM	3	7	2"	SHM	16		D6A		SHM	14		A				10/DS10	9/DS10	1			PB, BOTH SIDES
339-D	CELL	DAYROOM	3	7	2"	SHM	16		D6A		SHM	14		A				10/DS10	9/DS10	1			PB, BOTH SIDES
340-D	CELL	DAYROOM	3	7	2"	SHM	16		D6A		SHM	14		A				10/DS10	9/DS10	1			PB, BOTH SIDES
341-D	CELL	DAYROOM	3	7	2"	SHM	16		D6A		SHM	14		A				10/DS10	9/DS10	1			PB, BOTH SIDES
342-D	CELL	DAYROOM	3	7	2"	SHM	16		D6A		SHM	14		A				10/DS10	9/DS10	1			PB, BOTH SIDES
328-D	OFFICE	JANITOR	3	7	2"	SHM	16		D1	GL2	SHM	14		A				10/DS10	9/DS10	1			PB, BOTH SIDES



SECURITY MESH DETAIL

SCALE: 3" = 1'-0"

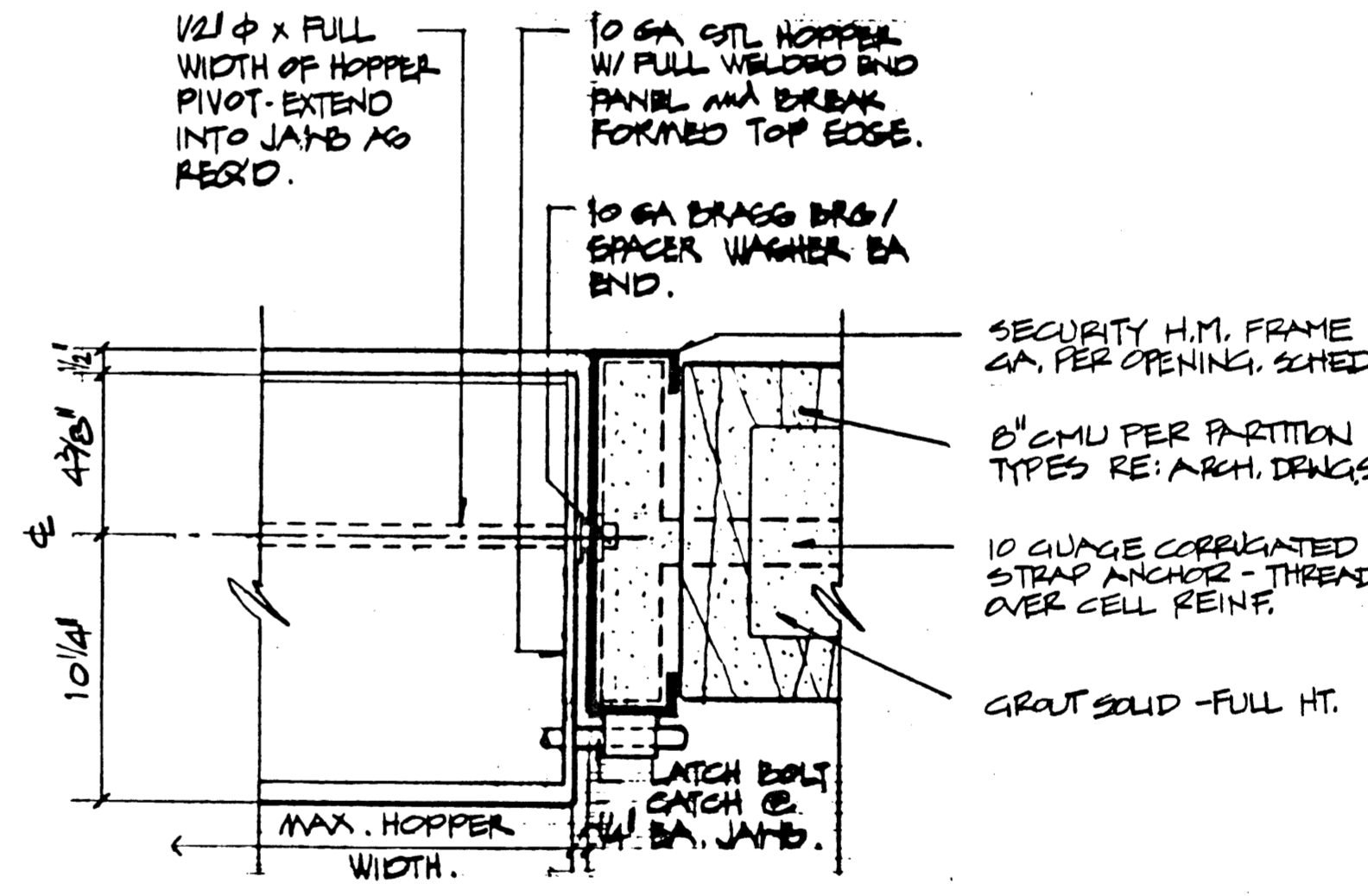
1



PASS THRU HEAD/SILL

SCALE: 1 1/2" = 1'-0"

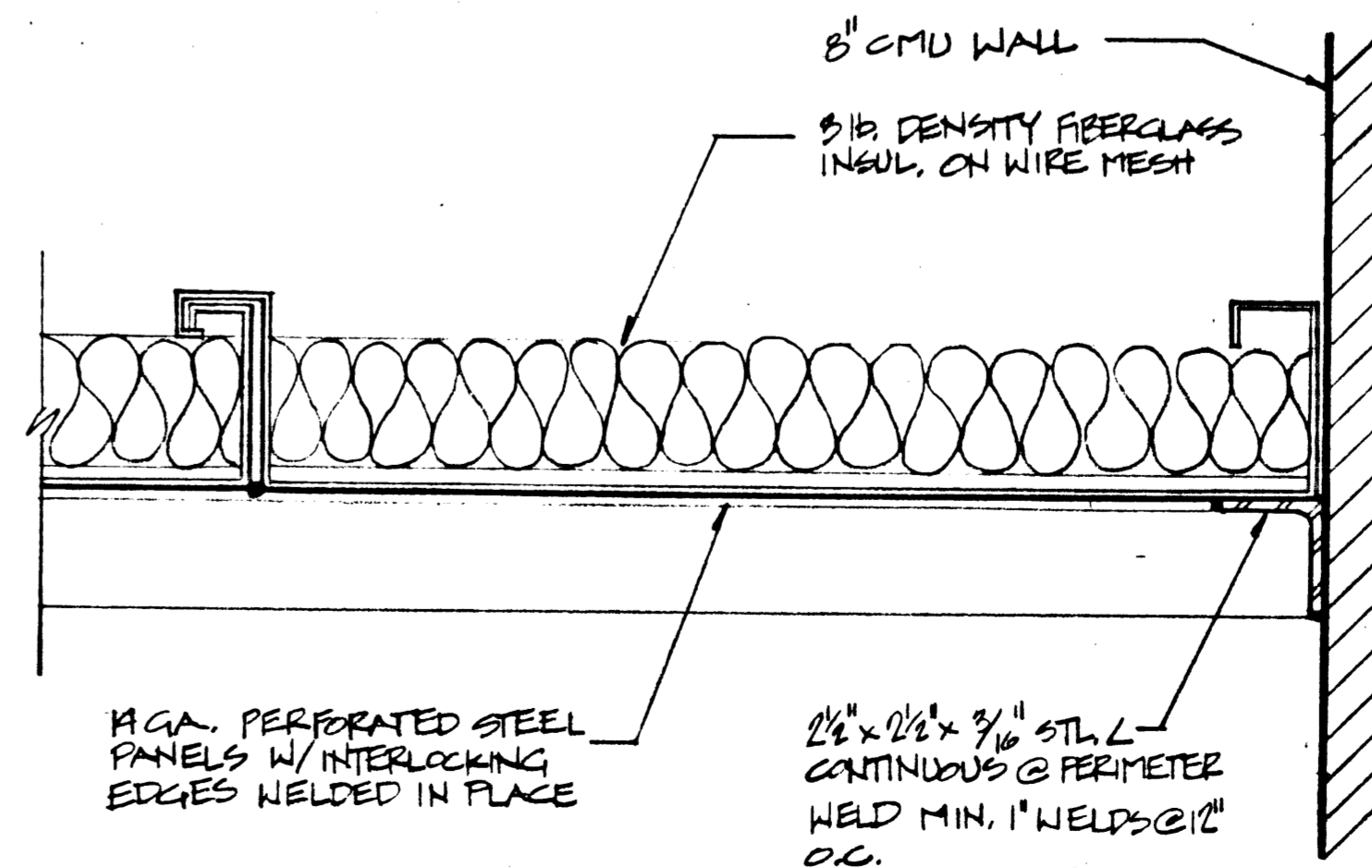
2



PASS THRU JAMB

SCALE: 3" = 1'-0"

3



CENTRAL CONTROL CEILING DETAIL

SCALE: 3" = 1'-0"

4

REVISIONS		
REV	DESCRIPTION	DATE BY

AS BUILT DESIGN DRAWING  
CONSTRUCTION CHANGES SHALL BE NOTED ON THIS DRAWING AND ARE BASED ON DATA FURNISHED BY THE CONTRACTOR

Haldane Harrison Associates, Inc.  
Detention Consultants and Planners (303) 494-1498  
345 MARTIN DRIVE, BOULDER, COLORADO 80303 Fax: (303) 449-0066

All ideas, designs, arrangements and plans indicated or presented by this drawing, as instruments of service, are owned by and the property of DOMINGO CAMBRISTO CORPORATION. The use of these plans and/or specifications shall be restricted to the original site for which they were prepared and publication thereof is expressly limited to such use. Reproduction, publication or re-use by any method, in whole or in part, is prohibited. None of such ideas, designs, arrangements or plans shall be used by or disclosed to any person, firm, agency or corporation without the written permission of DOMINGO CAMBRISTO CORPORATION. Visual contact with these plans and specifications shall constitute prima facie evidence of acceptance of these restrictions.

DETENTION SCHEDULES  
DRAWN BY: \_\_\_\_\_  
CHECKED BY: \_\_\_\_\_  
ISSUED DATE: 11-15-90

**DETENTION SCHEDULES**

**DOMINGO CAMBRISTO CORPORATION**  
ARCHITECTURE ENGINEERING PLANNING INTERIORS  
3555 PECOS-McLEOD IC. LAS VEGAS, NEVADA 89121 (702) 792-0084

CITY OF LAS VEGAS  
DETENTION FACILITY EXPANSION  
3100 EAST STEWART AVENUE  
LAS VEGAS, NEVADA

SHEET NO. 8113-11.15.90  
**DS8**  
140 of 163

