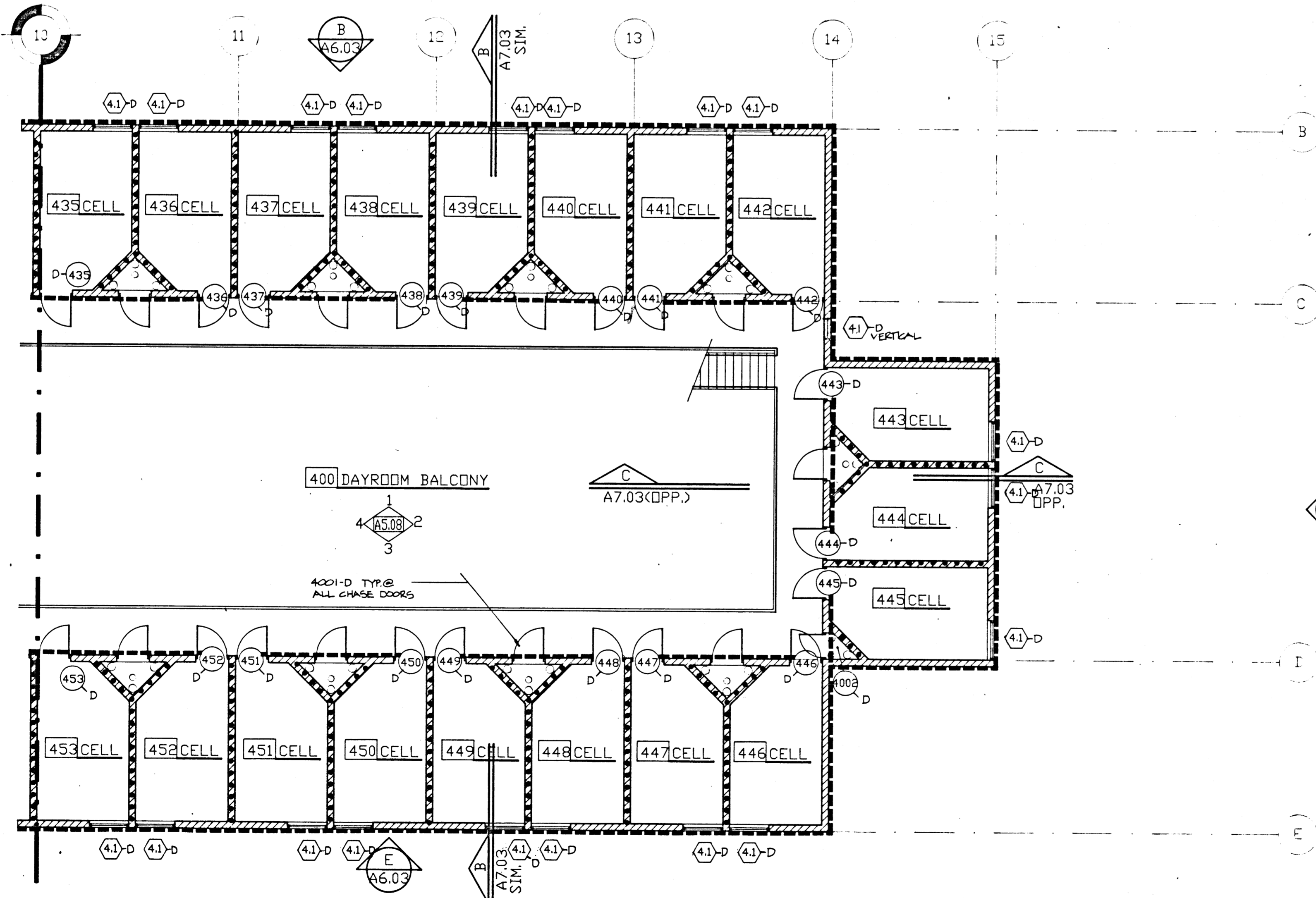
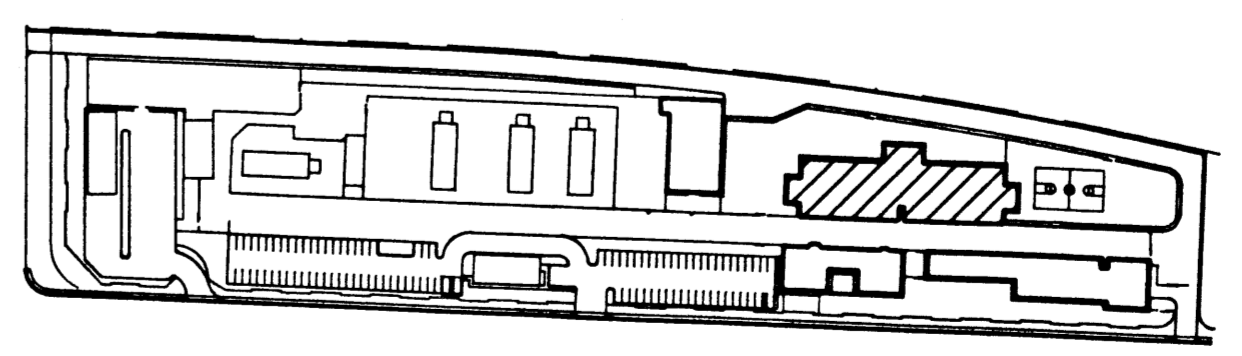


PARTIAL SECOND FLOOR PLAN - MALE HOUSING UNIT
SCALE: 1/8"=1'-0"



PARTIAL SECOND FLOOR PLAN - MALE HOUSING UNIT
SCALE: 1/8"=1'-0"



KEY PLAN

REVISIONS			
REV	DESCRIPTION	DATE	BY

© DOMINGO CAMBEIRO CORPORATION 1990

AS-BUILT RECORD DRAWING
CONSTRUCTION CHANGES SHOWN HEREON ARE BASED ON DATA FURNISHED BY THE CONTRACTOR

Haldane Harrison Associates, Inc. 1990
Detention Consultants and Planners 345 MARTIN DRIVE, BOULDER, COLORADO 80303

All designs, arrangements and plans indicated on presented by the drawing, as instruments of service, are owned by and the property of DOMINGO CAMBEIRO CORPORATION. The use of these plans and/or specifications shall be restricted to the original site for which they were prepared and publication thereof is expressly limited to such use. Reproduction, publication or re-use by any method, in whole or in part is prohibited. None of such designs, arrangements or plans shall be used by or disclosed to any person, firm, agency, or corporation without the written permission of DOMINGO CAMBEIRO CORPORATION. Violation of these plans and specifications shall constitute prima facie evidence of acceptance of these restrictions.

SEAL

DRAWN BY _____
CHECKED BY _____
ISSUED DATE 11-15-90

SECOND FLOOR PLAN MALE HOUSING UNIT

DD, NOT SCALE DRAWINGS

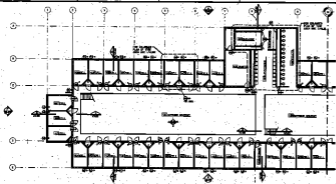
CITY OF LAS VEGAS
DETENTION FACILITY EXPANSION
3100 EAST STEWART AVENUE
LAS VEGAS, NEVADA

Domingo Cambeiro Corporation
ARCHITECTURE ENGINEERING PLANNING INTERIORS
3555 PECOS-MCLEOD IC. LAS VEGAS, NEVADA 89121
(702) 792-0084

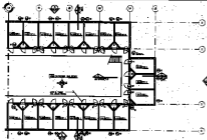
SHEET NO. 9113-11.1590

DS4
136 of 163

513-55X



DWYER - SECOND FLOOR PLAN - MALE HOUSING UNIT



DWYER - SECOND FLOOR PLAN - MALE HOUSING UNIT



KEY PLAN

NO.	REVISION

SEE SHEET FOR CONTINUATION

DATE FOR CONSTRUCTION
 CONTRACTOR'S NAME
 PROJECT NO.

DESIGNED BY

CHECKED BY

DATE

NOT TO SCALE
 ALL DIMENSIONS IN FEET AND INCHES
 UNLESS OTHERWISE SPECIFIED

FOR INFORMATION ONLY

NO PART OF THIS DRAWING TO BE REPRODUCED OR TRANSMITTED IN ANY FORM OR BY ANY MEANS, ELECTRONIC OR MECHANICAL, WITHOUT PERMISSION IN WRITING FROM THE ARCHITECT

ARCHITECT'S OFFICE

1234 MAIN STREET, SUITE 500, NEW YORK, NY 10001

PHONE (212) 555-1234

FAX (212) 555-5678

WWW.ARCHITECT.COM

PROJECT NO. 12345

DATE: 12/15/2023

SCALE: AS SHOWN

PROJECT: DWYER - SECOND FLOOR PLAN - MALE HOUSING UNIT

DATE: 12/15/2023

SCALE: AS SHOWN

PROJECT: DWYER - SECOND FLOOR PLAN - MALE HOUSING UNIT

DATE: 12/15/2023

SCALE: AS SHOWN

PROJECT: DWYER - SECOND FLOOR PLAN - MALE HOUSING UNIT

DATE: 12/15/2023

SCALE: AS SHOWN

PROJECT: DWYER - SECOND FLOOR PLAN - MALE HOUSING UNIT

DATE: 12/15/2023

SCALE: AS SHOWN

Download Complete Construction



12345