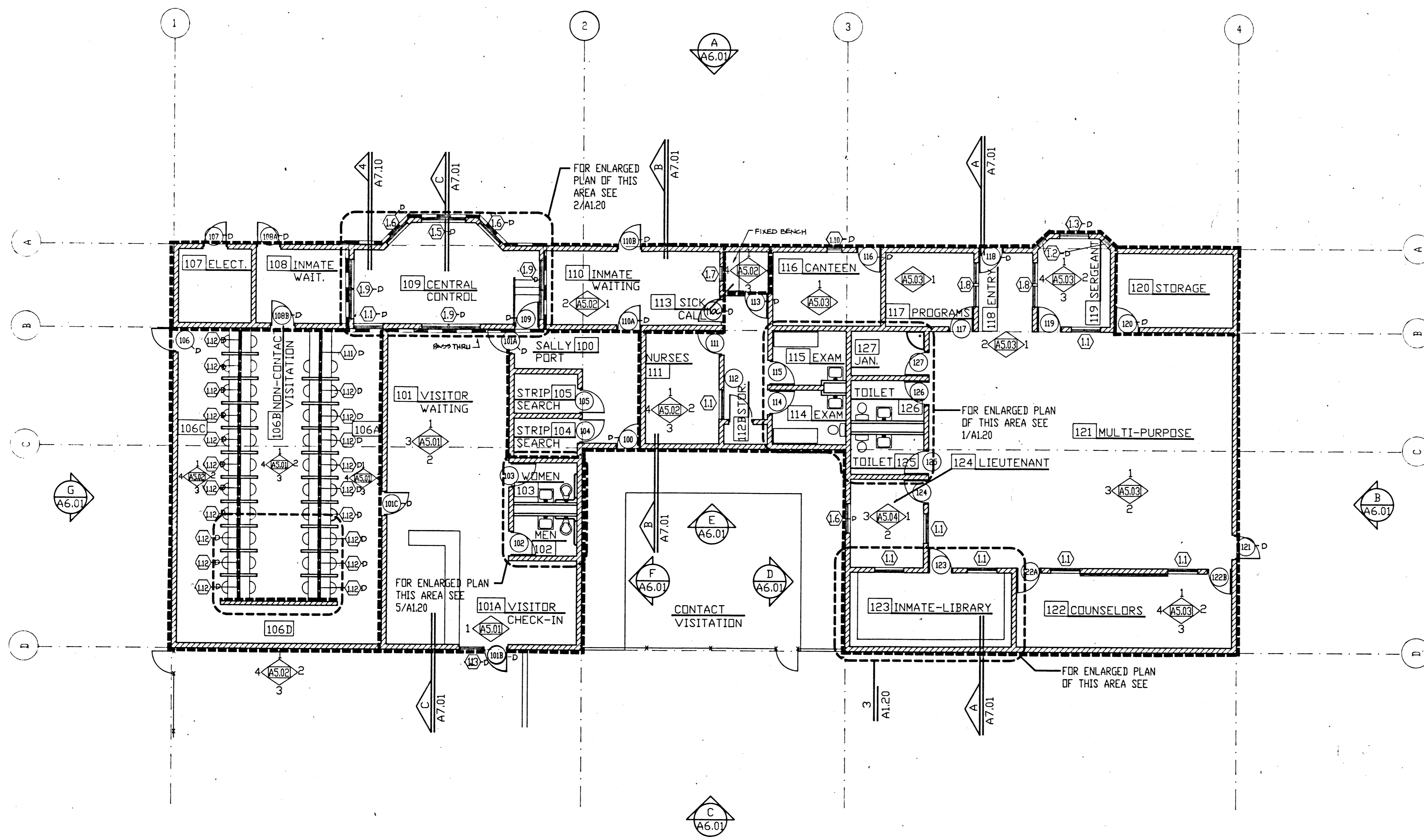
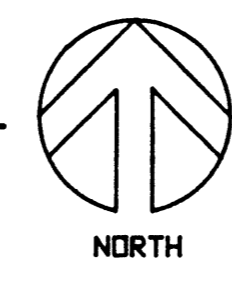


DS1



FLOOR PLAN - PROGRAMS + VISITATION UNIT
 SCALE: 1/8"=1'-0"



REVISIONS			
REV	DESCRIPTION	DATE	BY

© DOMINGO CAMBEIRO CORPORATION 1990

AS-BUILT RECORD DRAWING
 CONSTRUCTION CHANGES SHOWN HEREON
 ARE BASED ON DATA
 FURNISHED BY THE CONTRACTOR

© Haldane Harrison Associates, Inc., 1990

Haldane Harrison Associates, Inc.
 Detention Consultants and Planners
 345 MARTIN DRIVE, BOULDER, COLORADO 80303
 (303) 446-1466
 (303) 446-0908

All ideas, designs, arrangements and plans indicated or presented by this drawing as instruments of service, are owned by and the property of DOMINGO CAMBEIRO CORPORATION. The use of these plans and/or specifications shall be restricted to the original site for which they were prepared and publication thereof is expressly limited to such use. Reproduction, publication or re-use by any method, in whole or in part, is prohibited. None of such ideas, designs, arrangements or plans shall be used by or disclosed to any person, firm, agency, or corporation without the written permission of DOMINGO CAMBEIRO CORPORATION. Visual contact with these plans and specifications shall constitute prima facie evidence of acceptance of these restrictions.

SEAL

DRAWN BY
 CHECKED BY
 ISSUED DATE
 11-15-90

**FLOOR PLAN
 PROGRAMS and
 VISITATION**
 DD NOT SCALE DRAWINGS

**CITY OF LAS VEGAS
 DETENTION FACILITY EXPANSION
 3100 EAST STEWART AVENUE
 LAS VEGAS, NEVADA**

Domingo Cambeiro Corporation
 ARCHITECTURE • ENGINEERING • PLANNING • INTERIORS
 8555 PECOS-MCLEOD IC. LAS VEGAS, NEVADA 89121
 (702) 792-0084

9113

15-289

