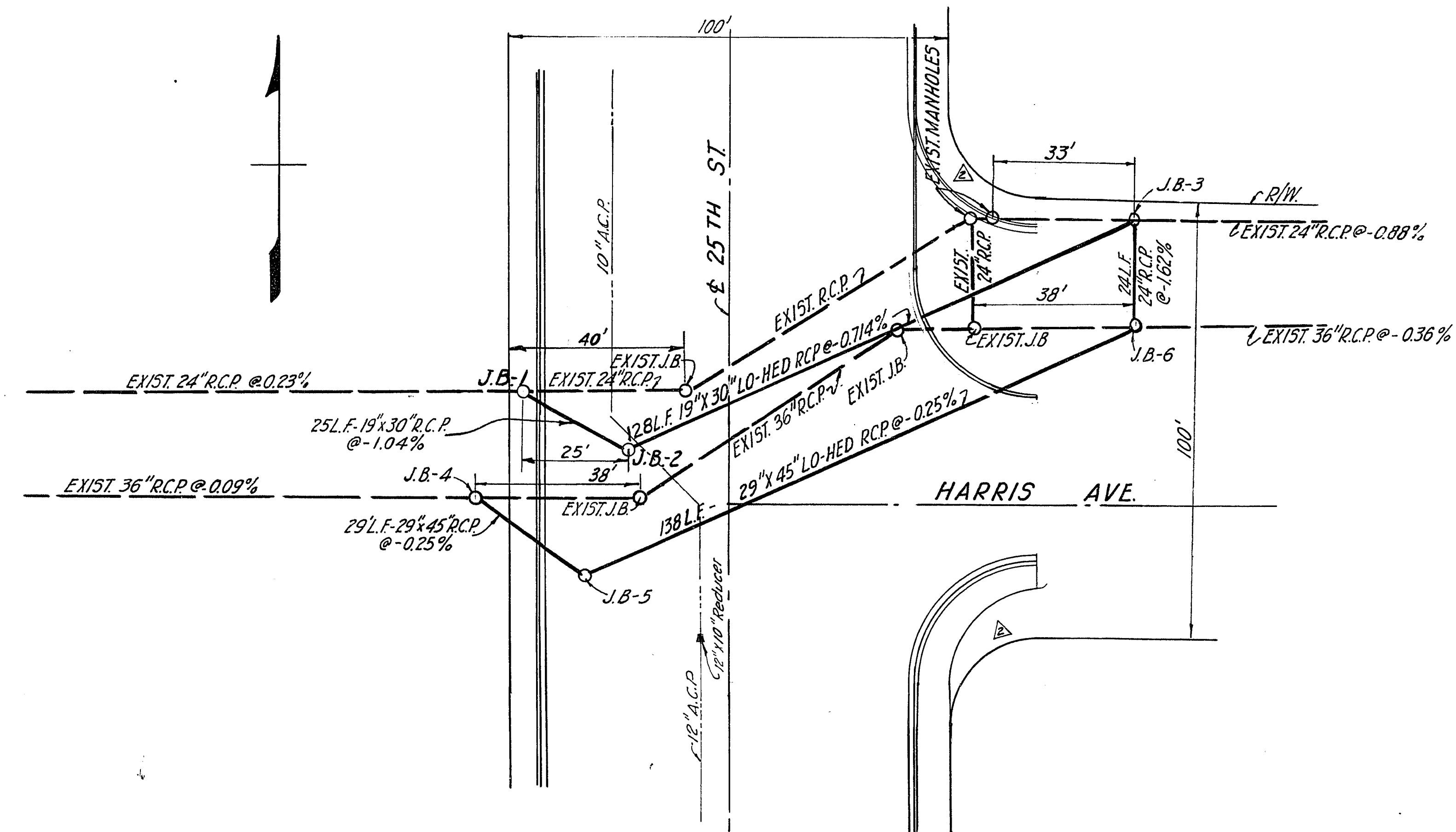


SCALES:  
 HORIZ. - 1" = 20'  
 VERT. - 1" = 2'

LIST OF MATERIALS		
ITEM	AMOUNT	UNIT
JUNCTION BOXES WITH HEAVY DUTY M.H. COVERS & FRAMES	6	EA.
19" X 30" LO HED R.C.P.	168	LIN. FT.
29" X 45" LO HED R.C.P.	167	LIN. FT.
24" R.C.P.	24	LIN. FT.

NOTE:  
 SEE SHEET 9-C FOR DETAILS AND EXACT LOCATION OF JUNCTION BOXES.



CITY OF LAS VEGAS, NEVADA ENGINEERING DEPARTMENT			
PLAN AND PROFILE (SANITARY SEWERS) 25 TH STREET WIDENING PROJECT			
DESIGNED BY	P.J.F.	DATE	5-3-66
DRAWN BY	D.G.S.	DATE	6-3-66
CHECKED BY	K.T.B.	DATE	8-1-66
APPROVED BY	<i>R.T. Javel</i>	DATE	11-10-66
PROJECT NUMBER	65-54		
CONTRACT NUMBER	CLV 255		
DRAWING NUMBER	CLV 20015		

REV.	DESCRIPTION	DATE	APP.
1	Change Order No. 1 Change Harris Ave. returns on East side of 25th Street	2-1-67	

AS CONSTRUCTED