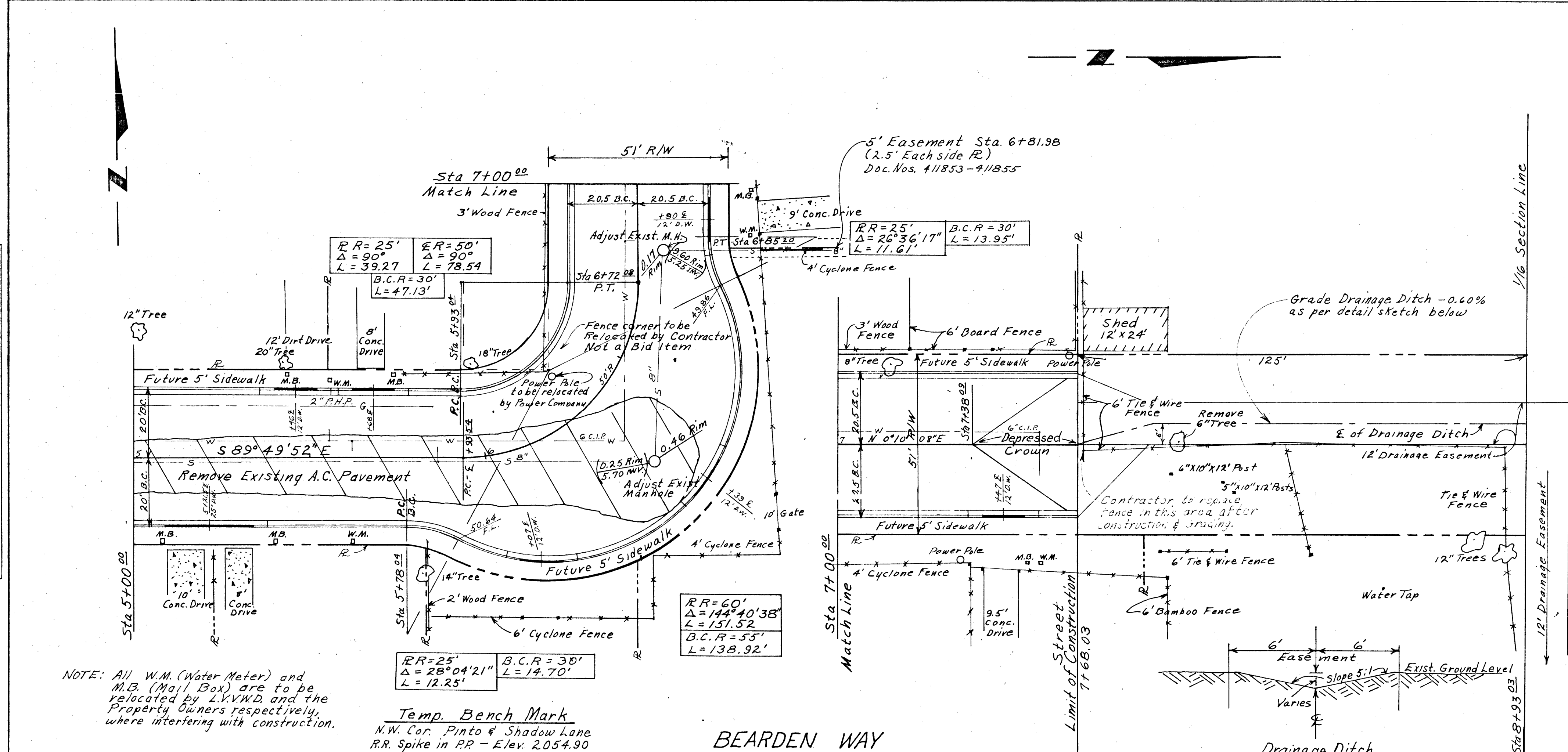


| APPROXIMATE QUANTITIES BOTH SHEETS | | | |
|------------------------------------|-----------------------|------|----------|
| ITEM | DESCRIPTION | UNIT | QUANTITY |
| 201.1 | Excavation | C.Y. | 1081 |
| 200.3 | Tree Removal-6" | Ea. | 1 |
| 334.4 | A.C. Pavement 2" | S.Y. | 3240 |
| 302.1 | Type I Gravel Base | C.Y. | 610 |
| 302.2 | Type II Gravel Base | C.Y. | 360 |
| 333.1 | Fog Seal | S.Y. | 3240 |
| 512.51 | Adjust Manhole | Ea. | 3 |
| 340.1 | 24" Curb & Gutter | L.F. | 1532 |
| 200.4 | Tree Removal-48" | Ea. | 1 |
| 560.08 | Relocate Fire Hydrant | Ea. | 1 |

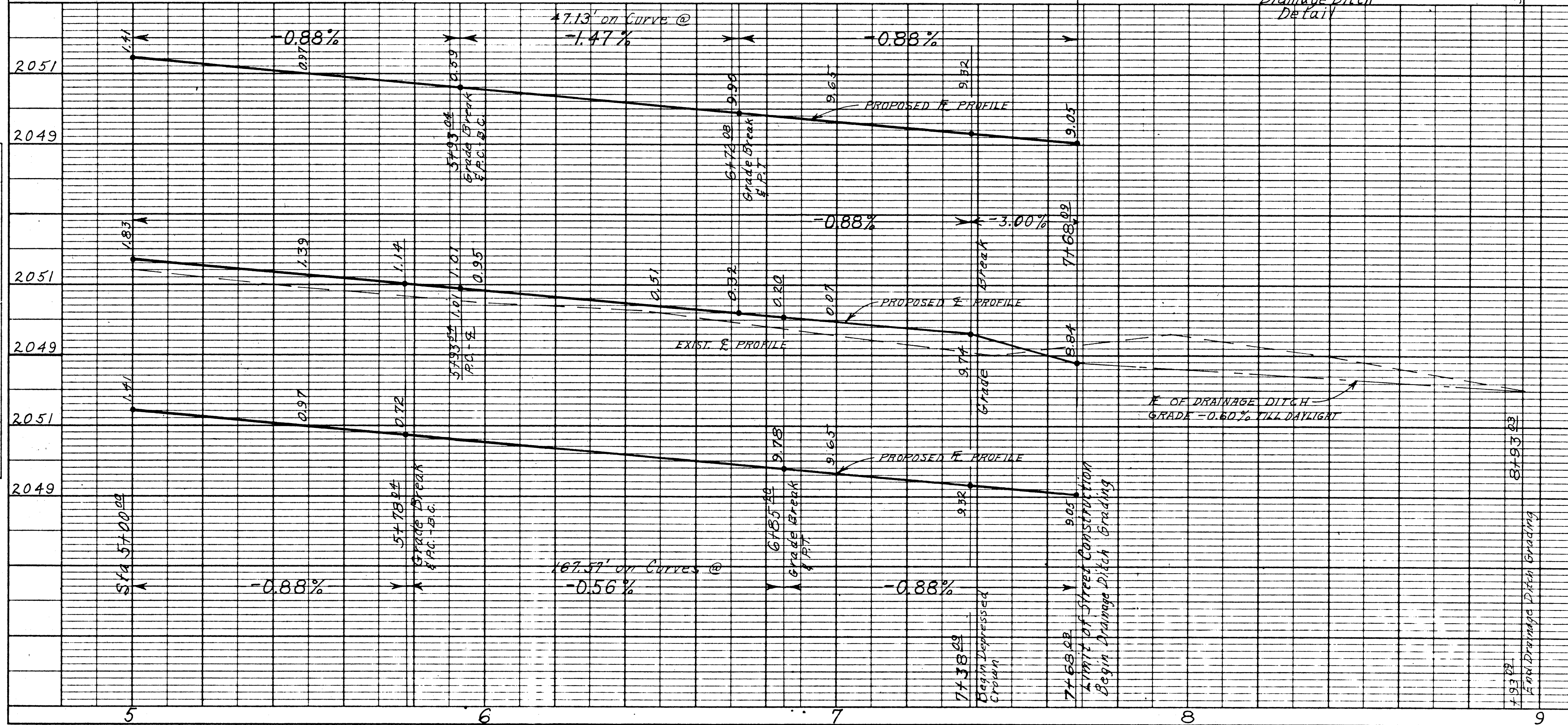
DATE: _____
 BY: _____
 CHECKED: _____
 APPROVED: _____
 TITLE: _____

DATE: _____
 BY: _____
 CHECKED: _____
 APPROVED: _____
 TITLE: _____



NOTE: All W.M. (Water Meter) and M.B. (Mail Box) are to be relocated by L.V.W.D. and the Property Owners respectively, where interfering with construction.

Temp. Bench Mark
 N.W. Cor. Pinto & Shadow Lane
 R.R. Spike in P.P. - Elev. 2054.90



| APPROVED DATE | RT-DIV | DATE |
|---------------|----------|---------|
| | 1 D.P.W. | |
| | 2 ENGR | 11/1/18 |
| | 3 FIELD | |
| | 4 R.W. | 11/1/18 |
| | 5 SERV | 11/1/18 |
| | SUBD | |
| | TRAFF | |
| | 3 UTIL | 11/1/18 |
| | 1 S.A.D. | |

SITE REVISED SHEET

| REVISION NO. | DESCRIPTION | BY | DATE | APPROVAL |
|--------------|-------------|----|------|----------|
| REVISIONS | | | | |

CITY OF LAS VEGAS NEVADA
 DEPARTMENT OF PUBLIC WORKS
 SERVICES DIVISION

BEARDEN WAY - SAD 476
 Unit VI

| | | | |
|--------------------------------------|-----------------|--------|-------------|
| W.O. NO. 476 | FBK NO. 67-3X | DATE | DRAWING NO. |
| SC. (H) 1" = 20' | SC. (V) 1" = 2' | 8-6-67 | 476 |
| DES. GOENKAT | DR. ELLISON | 9-3-67 | FILE NO. |
| APPROVED BY DIRECTOR OF PUBLIC WORKS | | | 107-V743 |

(SHEET 2 OF 2)