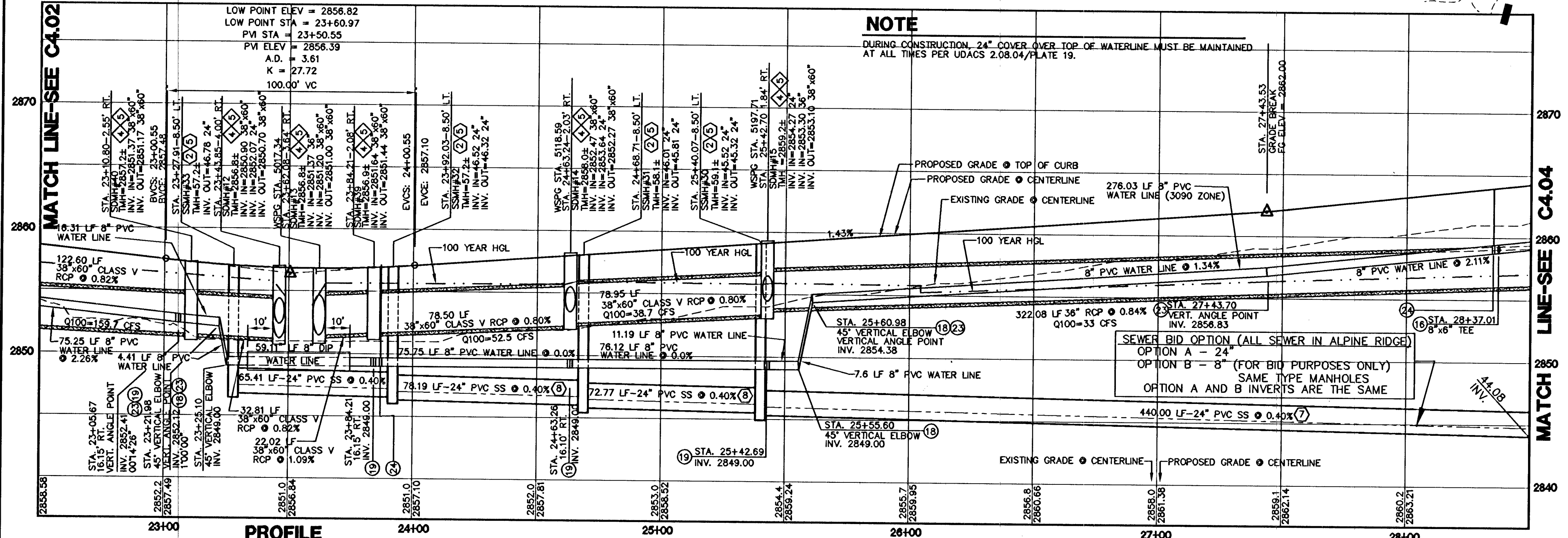


ALPINE RIDGE WAY-STA. 22+50 TO STA. 28+50

SCALE: 1"=30' HORIZ

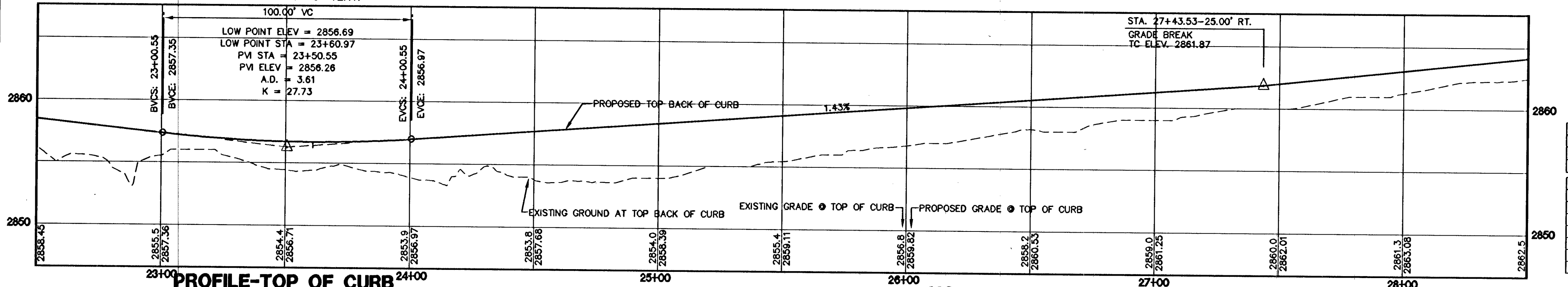
NOTE
REFER TO SHEET C4.00 FOR TYPICAL ROADWAY SECTIONS.



PROFILE

SCALE: 1"=30' HORIZ
1"=6' VERT.

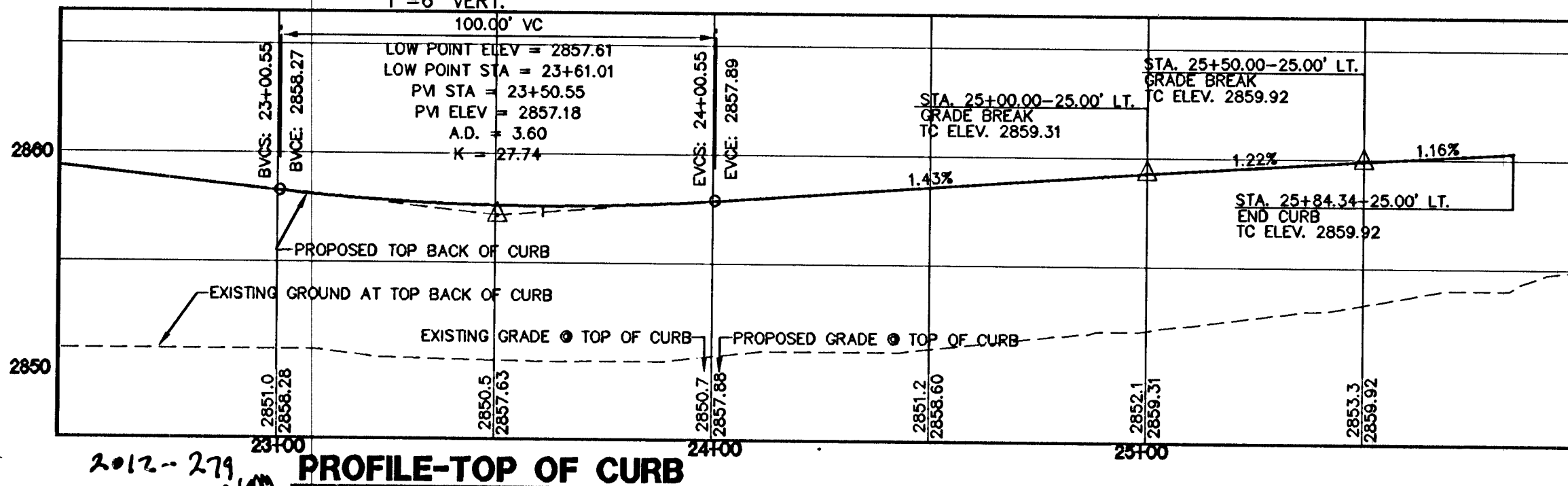
NOTE
DURING CONSTRUCTION, 24" COVER OVER TOP OF WATERLINE MUST BE MAINTAINED AT ALL TIMES PER UDACS 2.08.04/PLATE 19.



PROFILE-TOP OF CURB

SCALE: 1"=30' HORIZ
1"=6' VERT.

NOTE
REFER TO SIGNAGE AND STRIPING SHEETS FOR LOCATIONS OF SIGHT VISIBILITY ZONES. EACH CORNER OF EVERY INTERSECTION SHALL HAVE A SIGHT VISIBILITY ZONE REGARDLESS OF RIGHT OF WAY WIDTH. NO WALLS, FENCES, TREES, SHRUBS, UTILITY APPURTENANCES OR ANY OTHER OBJECT, OTHER THAN TRAFFIC CONTROL AND STREET LIGHT POLES, MAY BE CONSTRUCTED OR INSTALLED WITHIN THE SIGHT VISIBILITY ZONE UNLESS SAID OBJECT IS MAINTAINED AT LESS THAN 24 INCHES IN HEIGHT, MEASURED FROM TOP OF CURB, OR WHERE NO CURB EXISTS, A HEIGHT OF 27 INCHES MEASURED FROM THE TOP OF ASPHALT, GRAVEL OR PAVEMENT STREET SURFACE.



PROFILE-TOP OF CURB

SCALE: 1"=30' HORIZ
1"=6' VERT.

WATER MAIN JOINT DEFLECTION (PVC, 4" - 24")
PVC PIPE SHALL BE DEFLECTED AT THE JOINT ONLY. THE MAXIMUM ALLOWABLE DEFLECTION SHALL BE ONE (1) DEGREE PER JOINT WITH A MINIMUM RADIUS OF CURVATURE OF 1,150 FEET, PER UDACS 2.07.01 AND 2.07.02. FOR CHANGES IN DIRECTION EXCEEDING THE MAXIMUM ALLOWABLE JOINT DEFLECTION, FITTINGS SHALL BE USED.

INSTALL WATERLINE IN STEEL CASING PER UDACS PLATE No. 22 AND 23. MINIMUM 18" CLEARANCE IS REQUIRED ABOVE THE TOP OF CASING FROM THE UPPER BENCHES THROUGHOUT THE LOWERED SECTION OF THE PIPE. DUCTILE IRON PIPE WITH RESTRAINED JOINTS IS REQUIRED. IN ADDITION, THRUST BLOCKS ARE TO BE INSTALLED AT THE UPPER BENCHES. ANNULAR SPACE BETWEEN THE PIPE AND CASING SHALL BE FILLED WITH CLASS 1 CLSM. SEE UDACS PLATE No. 16, 17, 18 AND 19 FOR BEDDING AND BACKFILL REQUIREMENTS.

CONSTRUCTION KEY NOTES

- NOT ALL ITEMS ARE USED ON THIS SHEET
- CONSTRUCT TYPE 1" CURB AND GUTTER PER C.C.A.U.S.D. NO. 216 OVER 6" MIN. TYPE B BASE COMPACTED TO 95% MIN. UNLESS OTHERWISE NOTED IN THE PROJECT GEOTECHNICAL INVESTIGATION.
 - CONSTRUCT TYPE 'A' CURB PER DETAIL 1 ON SHEET C6.01.
 - CONSTRUCT 2" CONCRETE VALLEY GUTTER PER DETAIL 2 ON SHEET C6.01.
 - CONSTRUCT 4" CONCRETE VALLEY GUTTER PER DETAIL 3 ON SHEET C6.01.
 - CONSTRUCT CONCRETE SIDEWALK PER C.C.A.U.S.D. NO. 234.
 - CONSTRUCT SIDEWALK RAMP PER C.C.A.U.S.D. NO. 235 CASE 1.
 - CONSTRUCT COMMERCIAL DRIVEWAY PER C.C.A.U.S.D. NO. 225 WITH GEOMETRICS OF C.C.A.U.S.D. 222A.
 - CONSTRUCT HANDICAP AREA PER DETAIL 4 ON SHEET C6.01.
 - CONSTRUCT MODIFIED "L" CURB FROM BCR TO BCR PER DET. 11 SHT. C6.01.
 - INSTALL 3" FLUME PER DETAIL 5 ON SHEET C6.01.
 - INSTALL 6" FLUME PER DETAIL 6 ON SHEET C6.01.

WATER KEY NOTES

- NOT ALL ITEMS ARE USED ON THIS SHEET
- INSTALL 6" FIRE HYDRANT ASSEMBLY (INCLUDES 6" GATE VALVE) PER UDACS. PLATE NO. 40. PROVIDE A MINIMUM 3' CLEARANCE AROUND HYDRANT.
 - SEE GENERAL UTILITY CONSTRUCTION NOTE #16 ON SHEET C5.02.
 - PROVIDE A MINIMUM OF 18" VERTICAL CLEARANCE BETWEEN WATER AND SEWER/STORM DRAIN LINES WITH SEWER/STORM DRAIN LINES BEING BELOW WATER LINES.
 - INSTALL VEHICULAR PROTECTION BOLLARD PER UDACS. PLATE NO. 75. SIX (6) BOLLARDS PER HYDRANT.
 - INSTALL 8" REDUCED PRESSURE DETECTOR ASSEMBLY ABOVE FG, PER U.D.A.C.S. PLATE NO. 58.
 - INSTALL A 2" METER PER UDACS PLATE NO. 4 (POTABLE).
 - INSTALL A 12" GATE VALVE PER UDACS PLATE NO. 30 AND 39.
 - REFER TO LANDSCAPE PLANS FOR CONTINUATION.
 - INSTALL A RPPA PER UDACS PLATE NO. 8.
 - CONTRACTOR TO PROVIDE A MINIMUM OF 4.0' OF COVER ABOVE TOP TWELVE INCH (12") AND SMALLER PIPE, BASED ON FINISH GRADE FOR ON-SITE WATER LINES. OFF SITE PUBLIC WATER LINES IN RIGHT-OF-WAY TO BE A MINIMUM 3.5' (60" R/W), 4.0' (80" R/W) OF COVER BASED ON FINISH GRADE. REFER TO UDACS SECTION 2.08, AND UDACS PLATE NO. 17 FOR ADDITIONAL INFORMATION.
 - REFER TO MECHANICAL/PLUMBING PLANS FOR LOCATION AND ADDITIONAL INFORMATION.
 - INSTALL A 2" RPPA PER UDACS PLATE NO. 8 (POTABLE).
 - INSTALL A 2x4 MANIFOLD.
 - INSTALL 12"x8" TEE WITH 6" GATE VALVE W/THRUST BLOCK PER UDACS PLATE NO. 30, 31 AND 39.
 - INSTALL 8"x8" TEE PER UDACS PLATE NO. 31.
 - INSTALL 8"x8" TEE WITH 6" GATE VALVE PER UDACS PLATE NO. 30, 31 AND 39.
 - INSTALL 8"-90° BEND W/THRUST BLOCK PER UDACS PLATE NO. 31.
 - INSTALL 8"-45° BEND W/THRUST BLOCK PER UDACS PLATE NO. 31.
 - INSTALL 8"-11.25° BEND W/THRUST BLOCK PER UDACS PLATE NO. 31.
 - INSTALL 12"x8" REDUCER W/THRUST BLOCK PER UDACS PLATE NO. 30.
 - INSTALL 12"x12" TEE W/THRUST BLOCK PER UDACS PLATE NO. 31.
 - INSTALL 12"-22.5° BEND W/THRUST BLOCK PER UDACS PLATE NO. 31.
 - DEFLECT PIPE JOINT 1' MAX. VERTICALLY PER UDACS 2.07.01 AND 2.07.02.
 - INSTALL 8" GATE VALVE PER UDACS PLATE NO. 30 AND 39.
 - INSTALL 24"x12" TEE PER UDACS PLATE NO. 31.
 - INSTALL 12"x8" TEE PER UDACS PLATE NO. 31.
 - INSTALL 12" CAP & 2" BLOWOFF PER UDACS PLATE NO. 36.
 - TRENCH SECTION PER UDACS PLATE NO. 17.
 - INSTALL 24" CAP & 2" BLOWOFF PER UDACS PLATE NO. 36.
 - INSTALL 24" RESILIENT GATE VALVE PER DETAIL ON SHEET C6.02.
 - TYPE "K" COPPER WATERLINE PER UDACS PLATE NO. 4.
 - INSTALL 24"-22.5° BEND W/RESTRAINED JOINTS.
 - INSTALL 12"-45° BEND W/THRUST BLOCK PER UDACS PLATE NO. 31.
 - DEFLECT PIPE JOINT 1' MAX. HORIZONTALLY PER UDACS 2.07.01 AND 2.07.02.

STORM DRAIN KEY NOTES

- NOT ALL ITEMS ARE USED ON THIS SHEET
- INSTALL A 48" TYPE I MANHOLE PER C.C.A.U.S.D. 403.
 - INSTALL A 60" TYPE I MANHOLE PER C.C.A.U.S.D. 403.
 - INSTALL A 48" TYPE II MANHOLE PER C.C.A.U.S.D. 405.
 - INSTALL A 60" TYPE III MANHOLE PER C.C.A.U.S.D. 408.
 - INSTALL A CONCRETE COLLAR PER C.C.A.U.S.D. 408.
 - INSTALL A 2.5' GRATE WITH A 10" CURB OPENING MODIFIED TYPE "C" INLET PER C.C.A.U.S.D. 412A. INLET SHALL INCLUDE A WATER QUALITY STAMP PER C.C.A.U.S.D. 421.
 - INSTALL A JENSEN PRECAST D1242448 CATCH BASIN.
 - INSTALL A JENSEN PRECAST D1484872 CATCH BASIN.
 - INSTALL A 5' MODIFIED TYPE "CM" INLET PER C.C.A.U.S.D. 412A. INLET SHALL INCLUDE A WATER QUALITY STAMP PER C.C.A.U.S.D. 421.
 - INSTALL A 7.5' GRATE WITH AN 11.25" CURB OPENING MODIFIED TYPE "CM" INLET PER C.C.A.U.S.D. 412A. INLET SHALL INCLUDE A WATER QUALITY STAMP PER C.C.A.U.S.D. 421.
 - INSTALL A 10' MODIFIED TYPE "CM" INLET PER C.C.A.U.S.D. 412A. INLET SHALL INCLUDE A WATER QUALITY STAMP PER C.C.A.U.S.D. 421.
 - INSTALL A 12.5' MODIFIED TYPE "CM" INLET PER C.C.A.U.S.D. 412A. INLET SHALL INCLUDE A WATER QUALITY STAMP PER C.C.A.U.S.D. 421.
 - INSTALL A 27.5' MODIFIED TYPE "CM" INLET PER C.C.A.U.S.D. 412A. INLET SHALL INCLUDE A WATER QUALITY STAMP PER C.C.A.U.S.D. 421.
 - INSTALL AN RCP END SECTION PER NDOT DETAIL R-2.31.
 - INSTALL A 5' MODIFIED TYPE "CM" INLET PER C.C.A.U.S.D. 412A. INLET SHALL INCLUDE A WATER QUALITY STAMP PER C.C.A.U.S.D. 421.
 - INSTALL AN NDOT TYPE 2 DROP INLET PER DWG. NO. R-4.2.1.
 - CAP FOR FUTURE WITH BRICK OR CONCRETE. DO NOT USE WOOD.
- ALL STORM DRAIN PIPE SHALL BE CLASS III (MIN.) UNLESS OTHERWISE NOTED.

SANITARY SEWER KEY NOTES

- CONSTRUCT A STANDARD 48" PRECAST MANHOLE PER DCSWCS DRAWING No. SD-1A AND SD-1B.
- INSTALL A CONCRETE COLLAR PER DCSWCS DRAWING No. SD-4.
- TRENCH SECTION PER DCSWCS DRAWING No. SD-1B.
- INSTALL NEW SANITARY SEWER MAIN UNDER EXISTING WATER LATERAL PER DCSWCS DRAWING No. SD-21.
- INSTALL A STANDARD 72" PRECAST MANHOLE PER DCSWCS DRAWING No. SD-1A AND SD-1B.
- INSTALL A LOCKING MANHOLE COVER PER DCSWCS DRAWING No. SD-3.
- INSTALL 24" C905 WATER QUALITY PIPE. PIPE TO BE INSTALLED PER MANUFACTURER'S SPECIFICATIONS AND REQUIREMENTS FOR DEEP INSTALLATION.
- INSTALL 24" SS ULTRA CORR/ULTRA RIB PIPE USING A CLASS 1B (ASTM BEDDING CLASSIFICATION) BEDDING. PIPE TO BE INSTALLED PER MANUFACTURER'S SPECIFICATIONS AND REQUIREMENTS FOR DEEP INSTALLATION.
- INSTALL A SPECIAL MANHOLE PER DETAIL ON SHEET C4.15. H20 RATED.

BASIS OF BEARING

NORTH 00°05'54" WEST, BEING THE BEARING OF THE WEST LINE OF THE EAST HALF (E 1/2) OF THE NORTHWEST QUARTER (NW 1/4) OF SECTION 36 TOWNSHIP 19 SOUTH, RANGE 59 EAST, AS SHOWN ON A MAP ON FILE IN THE CLARK COUNTY, NEVADA RECORDERS' OFFICE AS FILE 89, PAGE 3 OF SURVEYS.

BENCHMARK

CITY OF LAS VEGAS BENCHMARK 5L99 3606
A RIVET AND PLATE IN A FENCE POST BASE AT THE SOUTHWEST CORNER OF ALPINE RIDGE AND HAMMER LANE
ELEVATION = 2851.24 FEET (869.059 METERS) NAVD 1988 DATUM

APPROVED FOR CONSTRUCTION

LAS VEGAS VALLEY WATER DISTRICT ENGINEERING SERVICES MANAGER
PROJECT NO. 116879 DATE 12/01/11

REVISIONS

REV	DESCRIPTION	DATE	BY
1	INSTALL CHAINLINK FENCE AT BSW	8/19/11	VRH

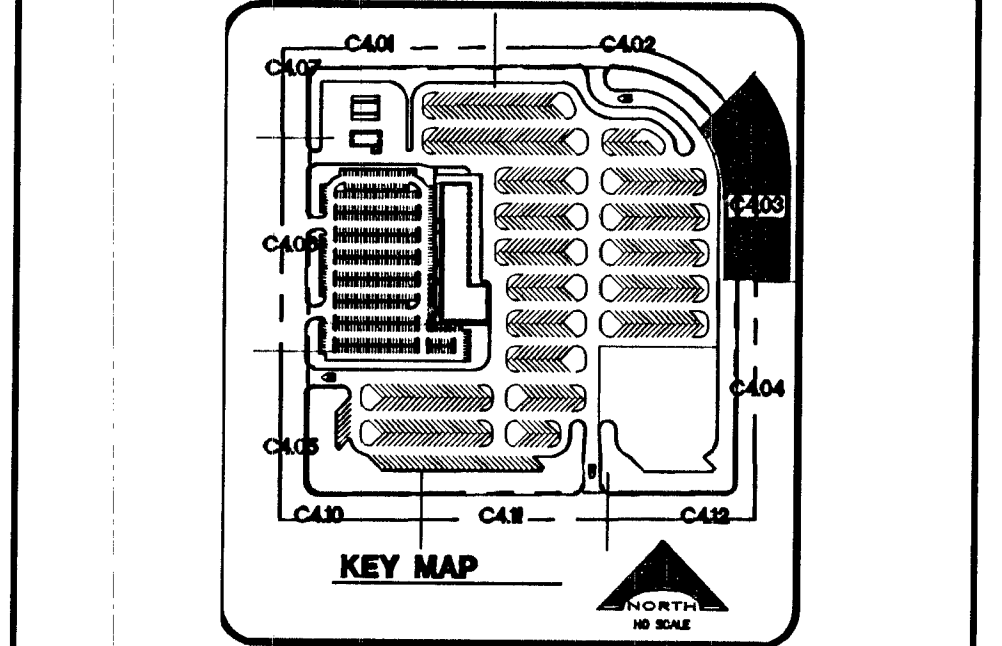
DISCLAIMER NOTE

UTILITY LOCATIONS SHOWN HEREON ARE APPROXIMATE ONLY. IT SHALL BE THE CONTRACTOR'S RESPONSIBILITY TO DETERMINE THE EXACT HORIZONTAL AND VERTICAL LOCATION OF ALL EXISTING UNDERGROUND AND OVERHEAD UTILITIES PRIOR TO COMMENCING CONSTRUCTION. NO REPRESENTATION IS MADE THAT ALL EXISTING UTILITIES ARE SHOWN HEREON. THE ENGINEER ASSUMES NO RESPONSIBILITY FOR UTILITIES NOT SHOWN OR UTILITIES NOT SHOWN IN THEIR PROPER LOCATION.

Call before you Dig
Avoid cutting underground utility lines. It's costly.

1-800-327-2600
CLARK COUNTY UTILITY OPERATIONS
1-702-455-7544

Call before you OVERHEAD
1-702-227-2929
NEVADA POWER ENVIRONMENT AND SAFETY SERVICES DEPARTMENT



VERNON R. HARKINS
Exp 6/30/13
CIVIL
No. 009598

DATE: OCTOBER 31, 2011
DRAWN BY: [Name]
CHECKED BY: [Name]

L. NELSON CONSULTING ENGINEERS, INC.
7045 West Boulder Road, Suite 200
Las Vegas, Nevada 89118
(702) 798-7979
(702) 451-2268 FAX

KGA ARCHITECTURE
1701 Directors Boulevard, Suite 370
Las Vegas, Nevada 89114
702.367.6900
www.kgarchitecture.com

CLARK COUNTY SCHOOL DISTRICT
DESIGN MANAGEMENT / PLANNING AND DESIGN
4170 McLEDD DRIVE
LAS VEGAS, NEVADA 89121

CCSD NORTHWEST SATELLITE TRANSPORTATION FACILITY

SHEET NO. **C4.03**
SHEET 32 OF 83
CLV #11249 715-183
HTE #11-19927