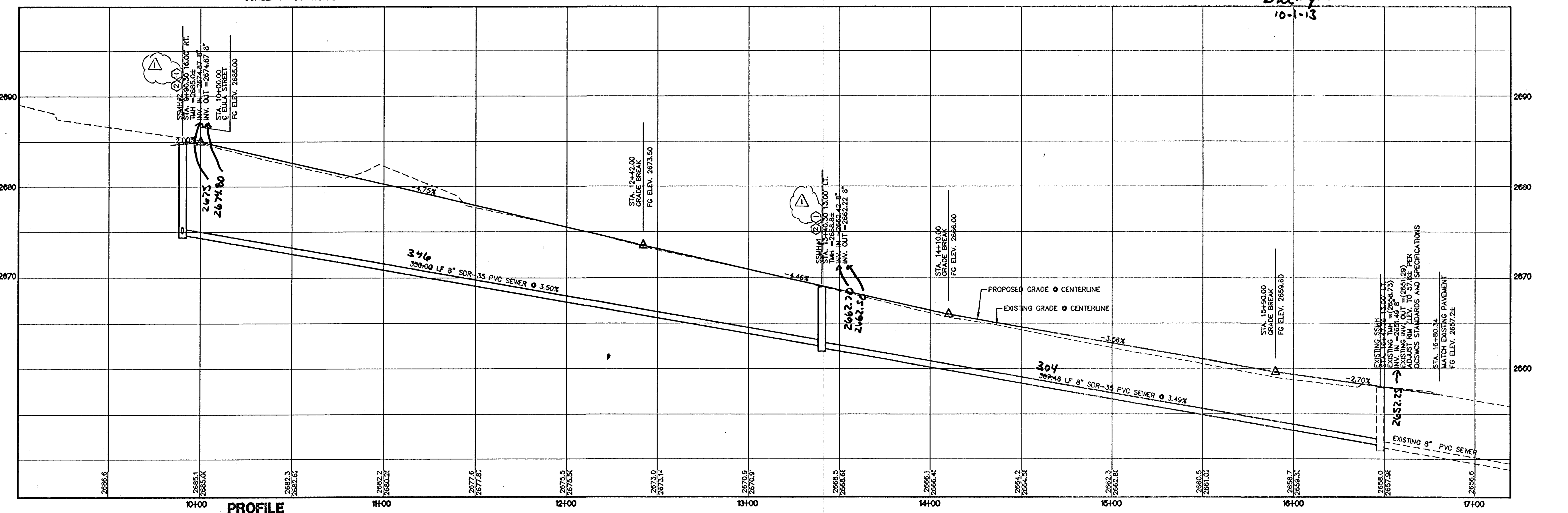


FISHER AVENUE-STA. 10+00 TO STA. 17+00 CLARK COUNTY
SCALE: 1"=30' HORIZ



PROFILE
SCALE: 1"=30' HORIZ
1"=6' VERT.

* 8" SDR 35 Sewer Pipe by
North American Pipe Corp

SANITARY SEWER KEY NOTES

- 1 CONSTRUCT A STANDARD 48" PRECAST MANHOLE PER DCSWCS DRAWING No. SD-1A AND SD-1B.
- 2 INSTALL A CONCRETE COLLAR PER DCSWCS DRAWING No. SD-4.
- 3 TRENCH SECTION PER DCSWCS DRAWING No. SD-1B.
- 4 INSTALL NEW SANITARY SEWER MAIN UNDER EXISTING WATER LATERAL PER DCSWCS DRAWING No. SD-21.
- 5 INSTALL A STANDARD 72" PRECAST MANHOLE PER DCSWCS DRAWING No. SD-1A AND SD-1B.
- 6 INSTALL A LOCKING MANHOLE COVER PER DCSWCS DRAWING No. SD-3.
- 7 INSTALL 24" C905 WATER QUALITY PIPE, PIPE TO BE INSTALLED PER MANUFACTURER'S SPECIFICATIONS AND REQUIREMENTS FOR DEEP INSTALLATION.
- 8 INSTALL 24" SS ULTRA CORR/ULTRA RIB PIPE USING A CLASS 1B (ASTM BEDDING CLASSIFICATION) BEDDING. PIPE TO BE INSTALLED PER MANUFACTURER'S SPECIFICATIONS AND REQUIREMENTS FOR DEEP INSTALLATION.
- 9 INSTALL A SPECIAL MANHOLE PER DETAIL ON SHEET C4.15, H20 RATED.
- 10 CONSTRUCT A STANDARD 60" PRECAST MANHOLE PER DCSWCS DRAWING No. SD-1A AND SD-1B.
- 11 TRENCH SECTION PER DCSWCS DWG. No. SD-1B. COMPACT TO 95% MIN. DENSITY.

CONSTRUCTION NOTES

- 1 SAWCUT EXISTING AC PAVEMENT AND RESTORE PER CCAUSD No. 500 AND TRENCH PER CCAUSD No. 503 AND DCSWCS STANDARDS.
- 2 CONTRACTOR TO REPLACE ALL OBLITERATED STRIPING, INSTALL NEW 4" WHITE EDGE LINE 2' FROM EDGE OF NEW PAVEMENT
- 3 APPROXIMATE LIMITS OF SAWCUT.
- 4 REPLACE MEDIAN ISLAND PER CCAUSD DRAWING No. 218.
- 5 FINAL LIMITS OF TRENCH SECTION AND ROTOMILL TO BE DETERMINED BY CITY OF LAS VEGAS INSPECTOR.
- 6 CONTRACTOR TO RESTORE DRAINAGE SWALE AND FLOWLINE UPON COMPLETION OF CONSTRUCTION ACTIVITIES.
- 7 PROTECT IN PLACE.

REMOVE AND REPLACE EXISTING AC WITH AC SECTION ON C4.00. ALL TRENCHING AND PAVEMENT RESTORATION SHALL BE PER CCAUSD 500 AND 503.

BASIS OF BEARING

NORTH 00°05'54" WEST, BEING THE BEARING OF THE WEST LINE OF THE EAST HALF (E 1/2) OF THE NORTHWEST QUARTER (NW 1/4) OF SECTION 38 TOWNSHIP 19 SOUTH, RANGE 50 EAST, AS SHOWN ON A MAP ON FILE IN THE CLARK COUNTY, NEVADA RECORDER'S OFFICE AS FILE 89, PAGE 3 OF SURVEYS.

BENCHMARK

CITY OF LAS VEGAS BENCHMARK SLV99 36N8
A RIVET AND PLATE IN A FENCE POST BASE AT THE SOUTHWEST CORNER OF ALPINE RIDGE AND HAMMER LANE
ELEVATION = 2851.24 FEET (869.059 METERS) NAVD 1988 DATUM

CLARK COUNTY DEPARTMENT OF PUBLIC WORKS DEVELOPMENT REVIEW

ACCEPTANCE OF PLANS FOR FILING
BY: *[Signature]* 12-12-11

ACCEPTANCE OF THESE PLANS FOR FILING SHALL NOT BE CONSTRUED TO BE A PERMIT FOR OR AN APPROVAL OF ANY VIOLATOR OF ANY OF THE PROVISIONS OF THE STATE OR COUNTY LAWS AND/OR SPECIFICATIONS. CLARK COUNTY SHALL BE HELD FREE FROM DAMAGES WHICH MAY RESULT FROM THE CONSTRUCTION OF THE IMPROVEMENTS FROM THE ENGINEERING DESIGN DEPICTED HEREIN.
NOTE: POWER POLES AND/OR OTHER EXISTING FACILITIES NOT IN PROPER LOCATION BASED ON PROPOSED IMPROVEMENTS SHOWN HEREON WILL BE RELOCATED AT NO EXPENSE TO CLARK COUNTY.

REVISIONS			
REV	DESCRIPTION	DATE	BY
Δ	COORDINATED MANHOLE SIZES	3/2/12	SKB

DISCLAIMER NOTE
UTILITY LOCATIONS SHOWN HEREON ARE APPROXIMATE ONLY. IT SHALL BE THE CONTRACTOR'S RESPONSIBILITY TO DETERMINE THE EXACT HORIZONTAL AND VERTICAL LOCATION OF ALL EXISTING UNDERGROUND AND OVERHEAD UTILITIES PRIOR TO COMMENCING CONSTRUCTION. NO REPRESENTATION IS MADE THAT ALL EXISTING UTILITIES ARE SHOWN HEREON. THE ENGINEER ASSUMES NO RESPONSIBILITY FOR UTILITIES NOT SHOWN OR UTILITIES NOT SHOWN IN THEIR PROPER LOCATION.

Call before you Dig
Avoid cutting underground utility lines. It's the ability.

1-800-227-2600
CLARK COUNTY PUBLIC OPERATIONS
1-702-455-7344

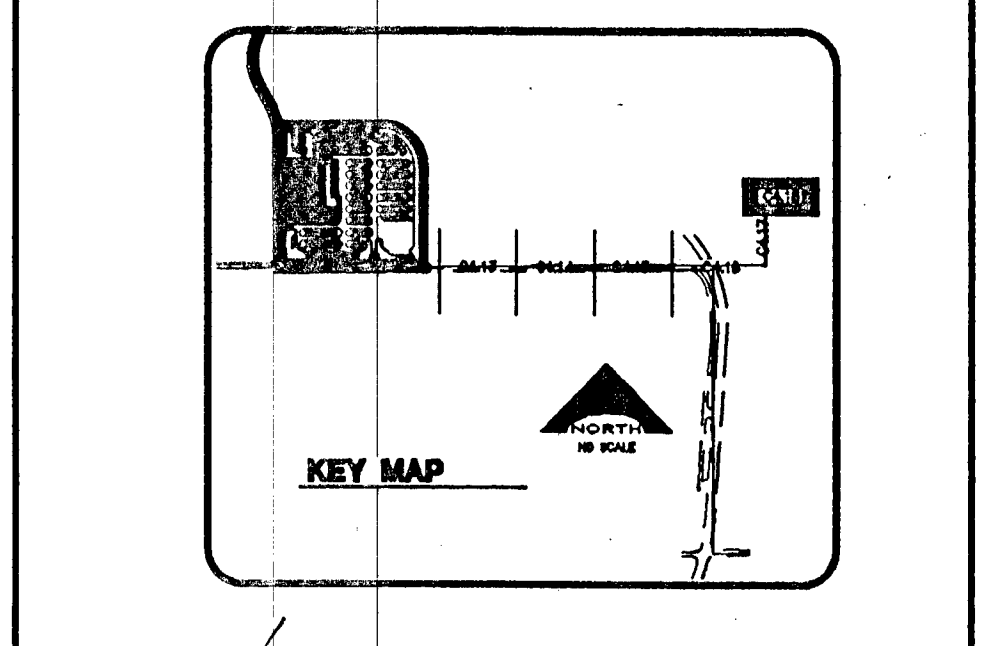
Avoid overhead power line contact

Call before you OVERHEAD

1-702-227-2929

NEVADA POWER OVERHEAD AND SAFETY SERVICES DEPARTMENT

CALL BEFORE YOU DIG
UNDERGROUND
1-702-455-7344
CLARK COUNTY PUBLIC OPERATIONS
1-702-227-2600
LAS VEGAS AND DISTRICTS TRAFFIC SYSTEMS



Professional Engineer Seal for JERNON R. HARKINS, CIVIL, No. 009593, Exp. 8/30/13.

PROJECT NO. 15-69
DATE: OCTOBER 31, 2011
DRAWN BY: [Name]
CHECKED BY: [Name]
SUBMITTED: [Date]
PROJECT NO. 08-816

CONSULTING ENGINEERS, INC.
1505 West Sahara Blvd., Suite 200
Las Vegas, Nevada 89115
(702) 798-7978
(702) 451-2386 FAX

L. NELSON
1505 West Sahara Blvd., Suite 200
Las Vegas, Nevada 89115
(702) 798-7978
(702) 451-2386 FAX

CLARK COUNTY SCHOOL DISTRICT
DESIGN MANAGEMENT / PLANNING AND DESIGN
LAS VEGAS, NEVADA 89121

CCSD NORTHWEST SATELLITE TRANSPORTATION FACILITY
4170 MCLEDD DRIVE
LAS VEGAS

KG ARCHITECTURE
9075 West Diablo Drive, Third Floor
Las Vegas, Nevada 89148
702-367-6900
www.kgarchitecture.com
LAS VEGAS

CLARK COUNTY DEPARTMENT OF PUBLIC WORKS DEVELOPMENT REVIEW
ACCEPTANCE OF PLANS FOR FILING
BY: *[Signature]* 12-12-11

ACCEPTANCE OF THESE PLANS FOR FILING SHALL NOT BE CONSTRUED TO BE A PERMIT FOR OR AN APPROVAL OF ANY VIOLATOR OF ANY OF THE PROVISIONS OF THE STATE OR COUNTY LAWS AND/OR SPECIFICATIONS. CLARK COUNTY SHALL BE HELD FREE FROM DAMAGES WHICH MAY RESULT FROM THE CONSTRUCTION OF THE IMPROVEMENTS FROM THE ENGINEERING DESIGN DEPICTED HEREIN.
NOTE: POWER POLES AND/OR OTHER EXISTING FACILITIES NOT IN PROPER LOCATION BASED ON PROPOSED IMPROVEMENTS SHOWN HEREON WILL BE RELOCATED AT NO EXPENSE TO CLARK COUNTY.

SHEET NO. **C4.18**
SHEET 47 OF 83
CLV #41249 7/5-188
HTE #11-19927