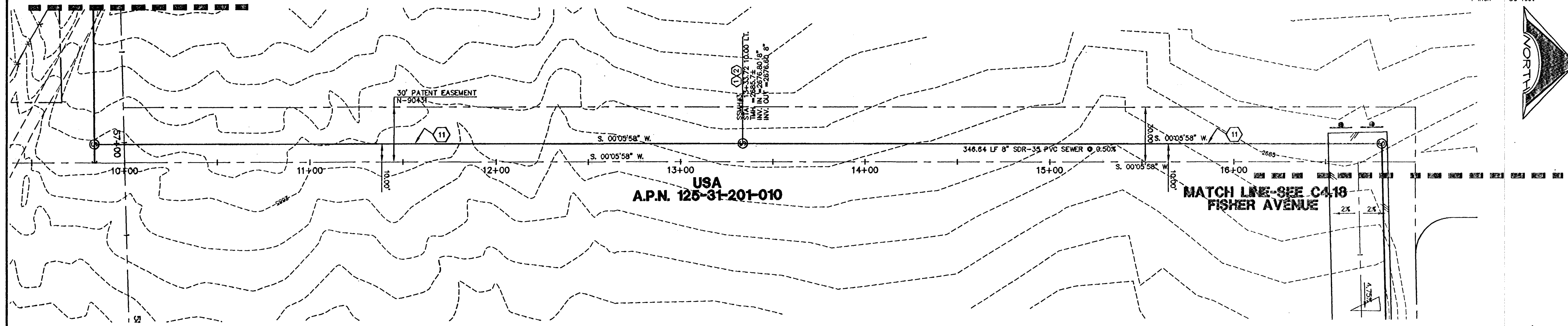
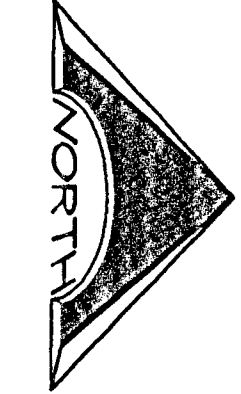
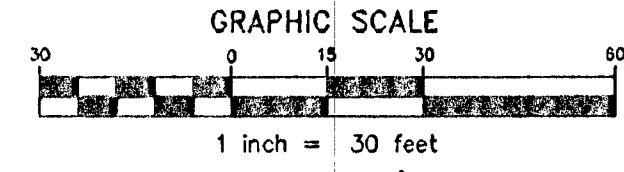


MATCH LINE-SEE C4.16  
WASHBURN ROAD



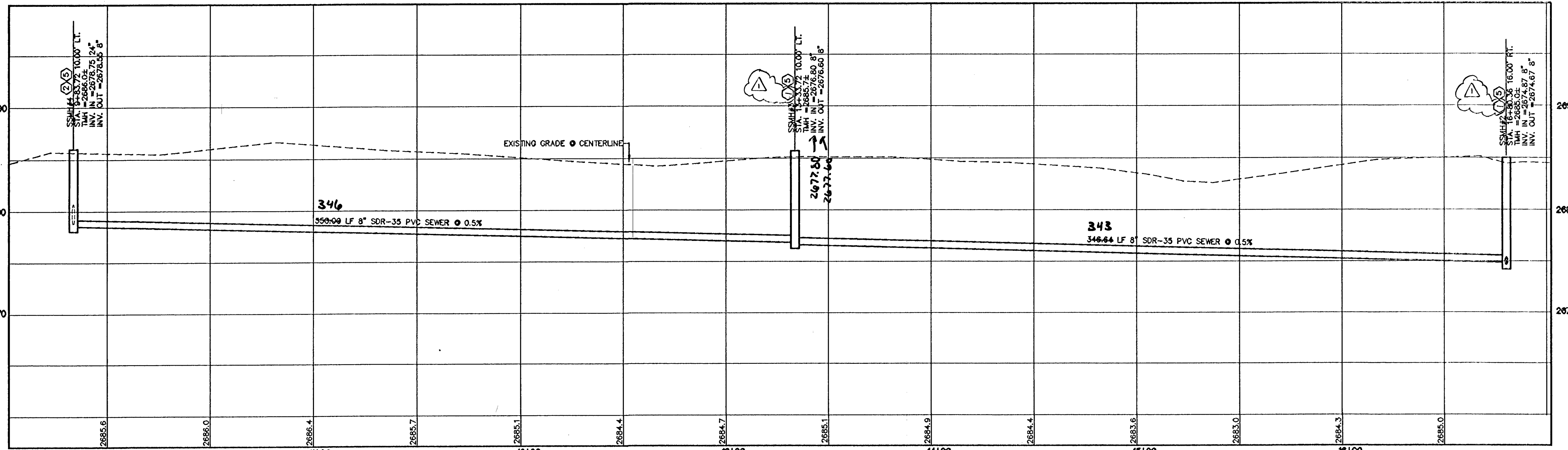
**EULA STREET-STA. 10+00 TO STA. 16+80.36**

SCALE: 1"=30' HORIZ

**DUST MITIGATION NOTE**

AGREEMENT FOR DUST CONTROL IS TO BE COMPLETED BY THE DEVELOPER--CCSD. TERRAIN OVER TRENCH TO BE RESTORED TO NON-DRIVEABLE CONDITIONS--LONGITUDINAL FURROWS 24 INCHES DEEP SPACED 4 FEET APART WITH 3 FOOT BREAKS EVERY 500 FEET O.C. OVER AREA OF DISTURBANCE.

Sewer As-built  
Tand Die  
Daly  
10-1-13



**PROFILE**

SCALE: 1"=30' HORIZ  
1"=6' VERT.

\* 8" SDR35 Sewer Pipe  
by North America Pipe Corp

**SANITARY SEWER KEY NOTES**

- CONSTRUCT A STANDARD 48" PRECAST MANHOLE PER DCSWCS DRAWING No. SD-1A AND SD-1B.
- INSTALL A CONCRETE COLLAR PER DCSWCS DRAWING No. SD-4.
- TRENCH SECTION PER DCSWCS DRAWING No. SD-1B.
- INSTALL NEW SANITARY SEWER MAIN UNDER EXISTING WATER LATERAL PER DCSWCS DRAWING No. SD-21.
- INSTALL A STANDARD 72" PRECAST MANHOLE PER DCSWCS DRAWING No. SD-1A AND SD-1B.
- INSTALL A LOCKING MANHOLE COVER PER DCSWCS DRAWING No. SD-3.
- INSTALL 24" C905 WATER QUALITY PIPE. PIPE TO BE INSTALLED PER MANUFACTURER'S SPECIFICATIONS AND REQUIREMENTS FOR DEEP INSTALLATION.
- INSTALL 24" SS ULTRA CORR/ULTRA RIB PIPE USING A CLASS 1B (ASTM BEDDING CLASSIFICATION) BEDDING. PIPE TO BE INSTALLED PER MANUFACTURER'S SPECIFICATIONS AND REQUIREMENTS FOR DEEP INSTALLATION.
- INSTALL A SPECIAL MANHOLE PER DETAIL ON SHEET C4.15. H20 RATED.
- CONSTRUCT A STANDARD 60" PRECAST MANHOLE PER DCSWCS DRAWING No. SD-1A AND SD-1B.
- TRENCH SECTION PER DCSWCS DWG. No. SD-1B. COMPACT TO 95% MIN. DENSITY.

**CONSTRUCTION NOTES**

- SAWCUT EXISTING AC PAVEMENT AND RESTORE PER CCAUSD No. 500 AND TRENCH PER CCAUSD No. 503 AND DCSWCS STANDARDS.
- CONTRACTOR TO REPLACE ALL OBLITERATED STRIPING. INSTALL NEW 4" WHITE EDGE LINE 2' FROM EDGE OF NEW PAVEMENT.
- APPROXIMATE LIMITS OF SAWCUT.
- REPLACE MEDIAN ISLAND PER CCAUSD DRAWING No. 218.
- FINAL LIMITS OF TRENCH SECTION AND ROTOMILL TO BE DETERMINED BY CITY OF LAS VEGAS INSPECTOR.
- CONTRACTOR TO RESTORE DRAINAGE SWALE AND FLOWLINE UPON COMPLETION OF CONSTRUCTION ACTIVITIES.
- PROTECT IN PLACE.

REMOVE AND REPLACE EXISTING AC WITH AC SECTION ON C4.00. ALL TRENCHING AND PAVEMENT RESTORATION SHALL BE PER CCAUSD 500 AND 503.

**BASIS OF BEARING**

NORTH 00°05'54" WEST, BEING THE BEARING OF THE WEST LINE OF THE EAST HALF (E 1/2) OF THE NORTHWEST QUARTER (NW 1/4) OF SECTION 36 TOWNSHIP 19 SOUTH, RANGE 59 EAST, AS SHOWN ON A MAP ON FILE IN THE CLARK COUNTY, NEVADA RECORDER'S OFFICE AS FILE 89, PAGE 3 OF SURVEYS.

**BENCHMARK**

CITY OF LAS VEGAS BENCHMARK 5LV99 36N8  
A RIVET AND PLATE IN A FENCE POST BASE AT THE SOUTHWEST CORNER OF ALPINE RIDGE AND HAMMER LANE  
ELEVATION = 2851.24 FEET (869.059 METERS) NAVD 1988 DATUM

**CLARK COUNTY DEPARTMENT OF PUBLIC WORKS DEVELOPMENT REVIEW**

ACCEPTANCE OF PLANS FOR FILING

By: *Roe Bell* 12-12-14

NOTE: POWER POLES AND/OR OTHER EXISTING FACILITIES NOT IN PROPER LOCATION BASED ON PROPOSED IMPROVEMENTS SHOWN HEREON WILL BE RELOCATED AT NO EXPENSE TO CLARK COUNTY.

REVISIONS			
REV	DESCRIPTION	DATE	BY
1	COORDINATED MANHOLE SIZES	3/2/12	JK

**DISCLAIMER NOTE**

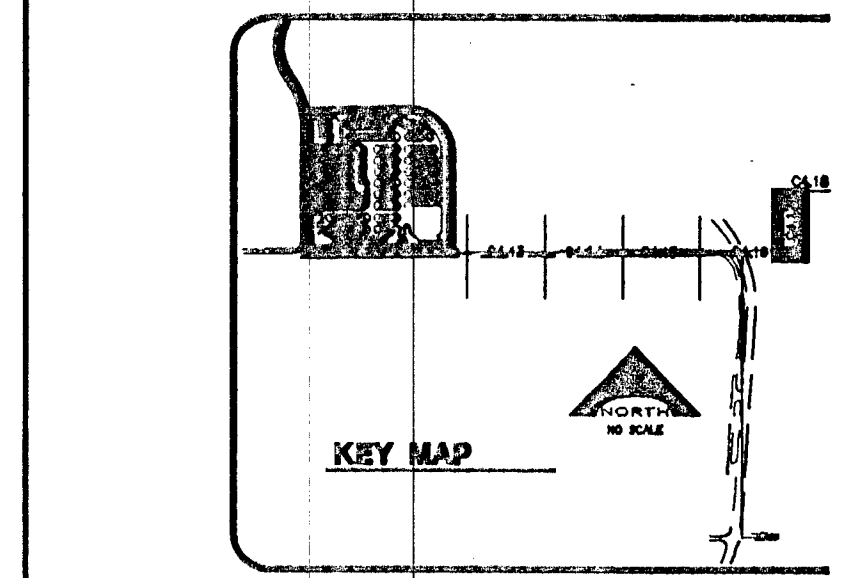
UTILITY LOCATIONS SHOWN HEREON ARE APPROXIMATE ONLY. IT SHALL BE THE CONTRACTOR'S RESPONSIBILITY TO DETERMINE THE EXACT HORIZONTAL AND VERTICAL LOCATION OF ALL EXISTING UNDERGROUND AND OVERHEAD UTILITIES PRIOR TO COMMENCING CONSTRUCTION. NO REPRESENTATION IS MADE THAT EXISTING UTILITIES ARE SHOWN HEREON. THE ENGINEER ASSUMES NO RESPONSIBILITY FOR UTILITIES NOT SHOWN OR UTILITIES NOT SHOWN IN THEIR PROPER LOCATION.

Call before you Dig  
Avoid cutting underground utility lines in a city.

1-800-367-2600  
CLARK COUNTY PUBLIC UTILITIES OPERATIONS  
1-702-455-7544

Avoid overhead power line contact  
Call before you OVERHEAD  
1-702-227-2929  
NEVADA POWER DIVISION AND SAFETY SERVICES DEPARTMENT

Call before you Dig  
Avoid cutting underground utility lines in a city.  
1-800-367-2600  
CLARK COUNTY PUBLIC UTILITIES OPERATIONS  
1-702-455-7544



Professional Engineer Seal for VERNON R. HARKINS, CIVIL, No. 009936, State of Nevada, Exp. 6/30/13.

PROJECT NO. 15-49  
DESIGN REVIEW  
APPROVED BY  
DATE  
DRAWN BY  
CHECKED BY  
SUBMITTAL  
PROJECT NO. 08-816

L. NELSON CONSULTING ENGINEERS, INC.  
6745 West Rumbold Road, Suite 200  
Las Vegas, Nevada  
(702) 431-2298 FAX

**KCA ARCHITECTURE**  
9075 West Doble Drive, Third Floor  
Las Vegas, Nevada 89148  
702.367.6900  
www.KCAArchitecture.com  
LAS VEGAS AUSTIN

**CLARK COUNTY SCHOOL DISTRICT**  
DESIGN MANAGEMENT / PLANNING AND DESIGN  
LAS VEGAS, NEVADA 89121

**CCSD NORTHWEST SATELLITE TRANSPORTATION FACILITY**  
4170 McLEED DRIVE

**PLAN AND PROFILE-OFFSITE SEWER**

SHEET NO. **C4.17**  
SHEET 46 OF 83  
CLV #41249 715-138  
HTE #11-19927