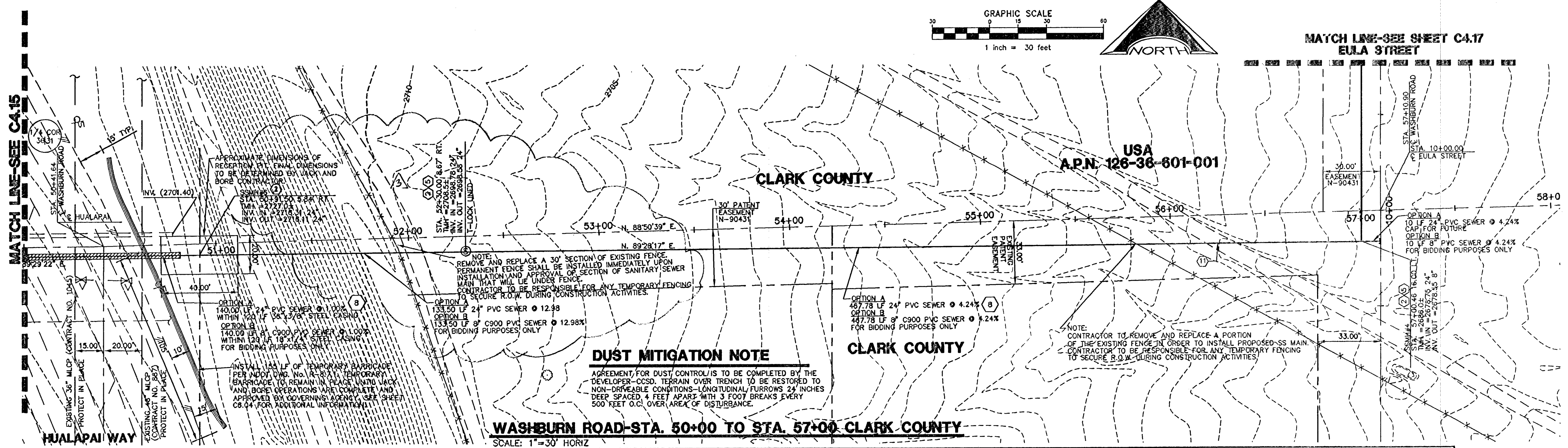


MATCH LINE-SEE SHEET C4.17  
EULA STREET



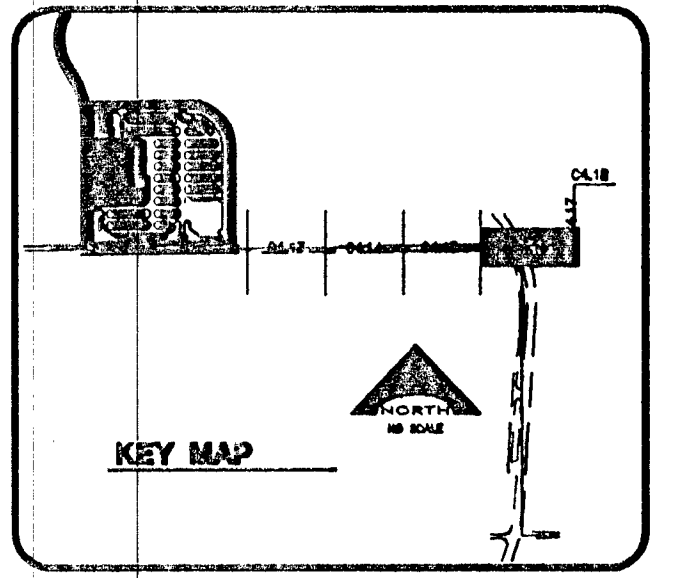
REVISIONS			
REV	DESCRIPTION	DATE	BY
3	REVISE VERTICAL ALIGNMENT OF SS	10/24/12	
	A.D.L. 10/29/2012 DOK		

**DISCLAIMER NOTE**  
UTILITY LOCATIONS SHOWN HEREON ARE APPROXIMATE ONLY. IT SHALL BE THE CONTRACTOR'S RESPONSIBILITY TO DETERMINE THE EXACT HORIZONTAL AND VERTICAL LOCATION OF ALL EXISTING UNDERGROUND AND OVERHEAD UTILITIES PRIOR TO COMMENCING CONSTRUCTION. NO REPRESENTATION IS MADE THAT ALL EXISTING UTILITIES ARE SHOWN HEREON. THE ENGINEER ASSUMES NO RESPONSIBILITY FOR UTILITIES NOT SHOWN OR UTILITIES NOT SHOWN IN THEIR PROPER LOCATION.

Call before you Dig  
Avoid cutting underground utility lines. Be safe.

1-800-227-2600  
CLARK COUNTY UTILITY OPERATIONS  
1-702-455-7524

Avoid overhead power line contact  
Call before you OVERHEAD  
1-702-227-2929  
NEVADA POWER CORPORATION AND SAFETY SERVICE DEPARTMENT



Professional Engineer Seal for VERNON R. HARKINS, CIVIL, No. 009890, Exp. 6/30/13.

PROJECT NO. 116679  
DESIGNED BY: [Signature]  
CHECKED BY: [Signature]  
DATE: 10/24/12

**L. R. NELSON CONSULTING ENGINEERS, INC.**  
6745 West Russell Road, Suite 200  
Las Vegas, Nevada 89115  
(702) 491-2226 FAX

**KCA ARCHITECTURE**  
9075 West Dibble Drive, Third Floor  
Las Vegas, Nevada 89148  
702.367.6900  
www.KCAarchitecture.com

**CLARK COUNTY SCHOOL DISTRICT**  
DESIGN MANAGEMENT / PLANNING AND DESIGN  
LAS VEGAS, NEVADA 89121

**CCSD NORTHWEST SATELLITE TRANSPORTATION FACILITY**  
4170 McLEED DRIVE  
LAS VEGAS

**PLAN AND PROFILE-OFFSITE SEWER**

SHEET NO. **C4.16**  
SHEET 45 OF 83

CLV #41249 715-188  
HTE #11-19927

**DUST MITIGATION NOTE**  
AGREEMENT FOR DUST CONTROL IS TO BE COMPLETED BY THE DEVELOPER-CCSD. TERRAIN OVER TRENCH TO BE RESTORED TO NON-DRIVEABLE CONDITIONS—LONGITUDINAL FURROWS 24 INCHES DEEP SPACED 4 FEET APART WITH 3 FOOT BREAKS EVERY 500 FEET O.C. OVER AREA OF DISTURBANCE.

**SANITARY SEWER KEY NOTES**

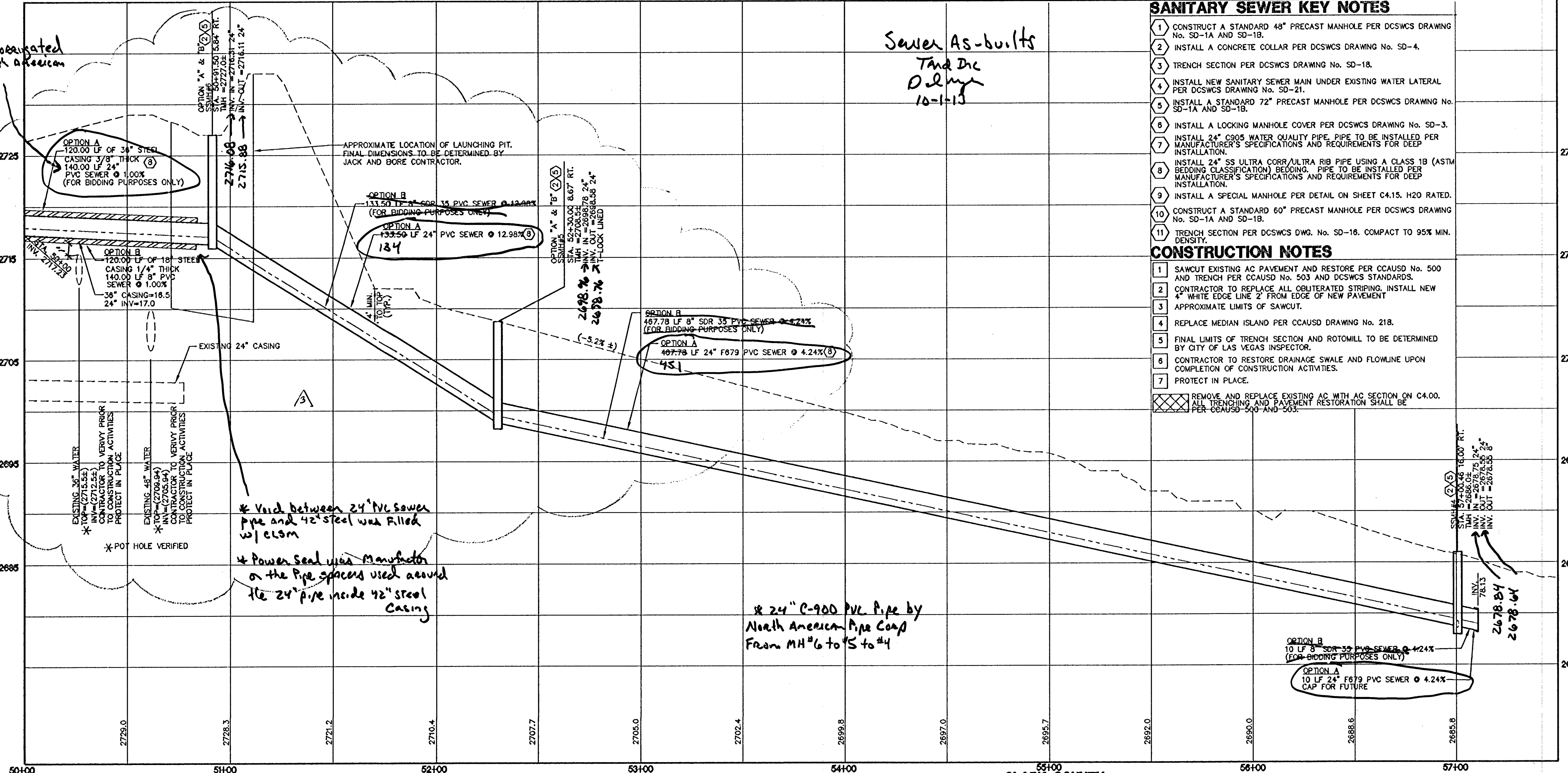
- CONSTRUCT A STANDARD 48" PRECAST MANHOLE PER DCSWCS DRAWING No. SD-1A AND SD-1B.
- INSTALL A CONCRETE COLLAR PER DCSWCS DRAWING No. SD-4.
- TRENCH SECTION PER DCSWCS DRAWING No. SD-18.
- INSTALL NEW SANITARY SEWER MAIN UNDER EXISTING WATER LATERAL PER DCSWCS DRAWING No. SD-21.
- INSTALL A STANDARD 72" PRECAST MANHOLE PER DCSWCS DRAWING No. SD-1A AND SD-1B.
- INSTALL A LOCKING MANHOLE COVER PER DCSWCS DRAWING No. SD-3.
- INSTALL 24" C905 WATER QUALITY PIPE. PIPE TO BE INSTALLED PER MANUFACTURER'S SPECIFICATIONS AND REQUIREMENTS FOR DEEP INSTALLATION.
- INSTALL A SPECIAL MANHOLE PER DETAIL ON SHEET C4.15, H20 RATED.
- CONSTRUCT A STANDARD 60" PRECAST MANHOLE PER DCSWCS DRAWING No. SD-1A AND SD-1B.
- TRENCH SECTION PER DCSWCS DWG. No. SD-16. COMPACT TO 95% MIN. DENSITY.

**CONSTRUCTION NOTES**

- SAWCUT EXISTING AC PAVEMENT AND RESTORE PER CCAUSD No. 500 AND TRENCH PER CCAUSD No. 503 AND DCSWCS STANDARDS.
- CONTRACTOR TO REPLACE ALL OBLITERATED STRIPING, INSTALL NEW 4" WHITE EDGE LINE 2' FROM EDGE OF NEW PAVEMENT.
- APPROXIMATE LIMITS OF SAWCUT.
- REPLACE MEDIAN ISLAND PER CCAUSD DRAWING No. 218.
- FINAL LIMITS OF TRENCH SECTION AND ROTOMILL TO BE DETERMINED BY CITY OF LAS VEGAS INSPECTOR.
- CONTRACTOR TO RESTORE DRAINAGE SWALE AND FLOWLINE UPON COMPLETION OF CONSTRUCTION ACTIVITIES.
- PROTECT IN PLACE.

REMOVE AND REPLACE EXISTING AC WITH AC SECTION ON C4.00. ALL TRENCHING AND PAVEMENT RESTORATION SHALL BE PER CCAUSD 500 AND 503.

Sewer As-builts  
Tnd Dc  
D.L.M.  
10-1-13



**PROFILE**

SCALE: 1"=30' HORIZ  
1"=6' VERT.

**BASIS OF BEARING**

NORTH 00°05'54" WEST, BEING THE BEARING OF THE WEST LINE OF THE EAST HALF (E 1/2) OF THE NORTHWEST QUARTER (NW 1/4) OF SECTION 38 TOWNSHIP 19 SOUTH, RANGE 59 EAST, AS SHOWN ON A MAP ON FILE IN THE CLARK COUNTY, NEVADA RECORDER'S OFFICE AS FILE 89, PAGE 3 OF SURVEYS.

**BENCHMARK**

CITY OF LAS VEGAS BENCHMARK 5LV99.36N6  
A RIVET AND PLATE IN A FENCE POST BASE AT THE SOUTHWEST CORNER OF ALPINE RIDGE AND HAMMER LANE  
ELEVATION = 2851.24 FEET (869.059 METERS) NAVD 1988 DATUM

**CLARK COUNTY DEPARTMENT OF PUBLIC WORKS DEVELOPMENT REVIEW**

ACCEPTANCE OF PLANS FOR FILING  
BY: [Signature] 10/24/12

ACCEPTANCE OF THESE PLANS FOR FILING SHALL NOT BE CONSTRUED TO BE A PERMIT FOR OR AN APPROVAL OF ANY VIOLATION OF ANY OF THE PROVISIONS OF THE STATE OR COUNTY LAWS AND/OR SPECIFICATIONS. CLARK COUNTY SHALL BE HELD FREE FROM DAMAGES WHICH MAY RESULT FROM THE CONSTRUCTION OF THE IMPROVEMENTS FROM THE ENGINEERING DESIGN DEPICTED HEREIN.

NOTE: POWER POLES AND/OR OTHER EXISTING FACILITIES NOT IN PROPER LOCATION BASED ON PROPOSED IMPROVEMENTS SHOWN HEREON WILL BE RELOCATED AT NO EXPENSE TO CLARK COUNTY.

**APPROVED FOR CONSTRUCTION 10/24/12**

**Las Vegas Valley Water District Engineering Services Manager**  
PROJECT NO. 116679 DATE 10/23/12

R.C. POTTERO  
10/20/12