

REVISIONS			
REV	DESCRIPTION	DATE	BY
3	RE	ALIGNMENT ADJ.	10/24/12
	A.O.K.	10/24/2012	

WASHBURN ROAD-STA. 42+50 TO STA. 50+00 CLARK COUNTY
SCALE: 1"=30' HORIZ

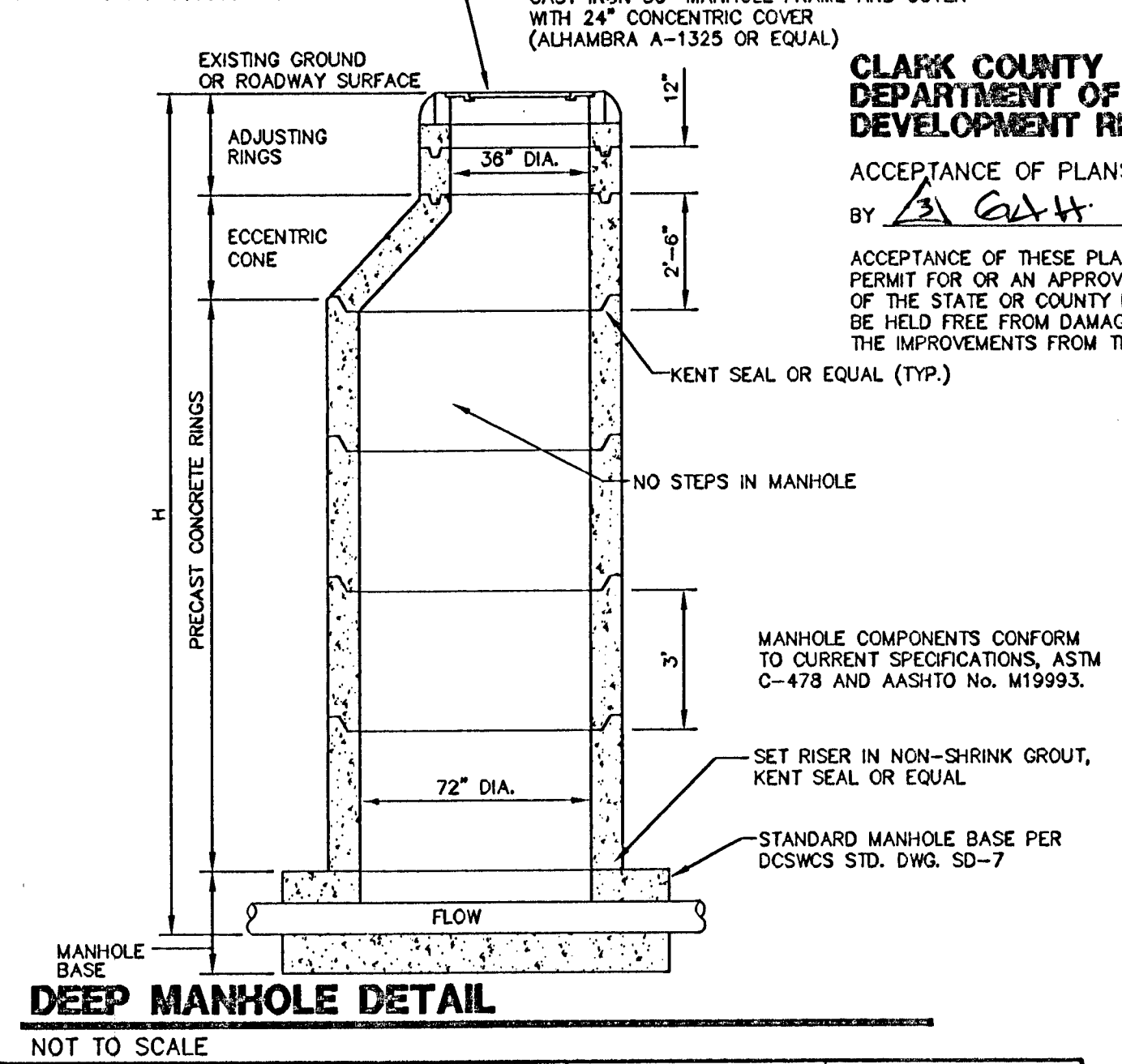
*Sewer As-Builts
Tand Inc
D. L. Myn
10-1-13*

SANITARY SEWER KEY NOTES

- CONSTRUCT A STANDARD 48" PRECAST MANHOLE PER DCSWCS DRAWING No. SD-1A AND SD-1B.
- INSTALL A CONCRETE COLLAR PER DCSWCS DRAWING No. SD-4.
- TRENCH SECTION PER DCSWCS DRAWING No. SD-18.
- INSTALL NEW SANITARY SEWER MAIN UNDER EXISTING WATER LATERAL PER DCSWCS DRAWING No. SD-21.
- INSTALL A STANDARD 72" PRECAST MANHOLE PER DCSWCS DRAWING No. SD-1A AND SD-1B.
- INSTALL A LOCKING MANHOLE COVER PER DCSWCS DRAWING No. SD-3.
- INSTALL 24" C905 WATER QUALITY PIPE, PIPE TO BE INSTALLED PER MANUFACTURER'S SPECIFICATIONS AND REQUIREMENTS FOR DEEP INSTALLATION.
- INSTALL 24" SS ULTRA CORR/ULTRA RIB PIPE USING A CLASS 1B (ASTM BEDDING CLASSIFICATION) BEDDING. PIPE TO BE INSTALLED PER MANUFACTURER'S SPECIFICATIONS AND REQUIREMENTS FOR DEEP INSTALLATION.
- INSTALL A SPECIAL MANHOLE PER DETAIL ON SHEET C4.15, H20 RATED.
- CONSTRUCT A STANDARD 60" PRECAST MANHOLE PER DCSWCS DRAWING No. SD-1A AND SD-1B.
- TRENCH SECTION PER DCSWCS DWG. No. SD-18. COMPACT TO 95% MIN. DENSITY.

CONSTRUCTION NOTES

- SAWCUT EXISTING AC PAVEMENT AND RESTORE PER CCAUSD No. 500 AND TRENCH PER CCAUSD No. 503 AND DCSWCS STANDARDS.
 - CONTRACTOR TO REPLACE ALL OBLITERATED STRIPING, INSTALL NEW 4" WHITE EDGE LINE 2' FROM EDGE OF NEW PAVEMENT.
 - APPROXIMATE LIMITS OF SAWCUT.
 - REPLACE MEDIAN ISLAND PER CCAUSD DRAWING No. 218.
 - FINAL LIMITS OF TRENCH SECTION AND ROTOMILL TO BE DETERMINED BY CITY OF LAS VEGAS INSPECTOR.
 - CONTRACTOR TO RESTORE DRAINAGE SWALE AND FLOWLINE UPON COMPLETION OF CONSTRUCTION ACTIVITIES.
 - PROTECT IN PLACE.
- REMOVE AND REPLACE EXISTING AC WITH AC SECTION ON C4.00. INSTALL TRENCHING AND PAVEMENT RESTORATION SHALL BE PER CCAUSD 500 AND 503.



CLARK COUNTY DEPARTMENT OF PUBLIC WORKS DEVELOPMENT REVIEW

ACCEPTANCE OF PLANS FOR FILING
BY *A. G. H.* 10/24/12

ACCEPTANCE OF THESE PLANS FOR FILING SHALL NOT BE CONSTRUED TO BE A PERMIT FOR OR AN APPROVAL OF ANY VIOLATION OF ANY OF THE PROVISIONS OF THE STATE OR COUNTY LAWS AND/OR SPECIFICATIONS. CLARK COUNTY SHALL BE HELD FREE FROM DAMAGES WHICH MAY RESULT FROM THE CONSTRUCTION OF THE IMPROVEMENTS FROM THE ENGINEERING DESIGN DEPICTED HEREIN.

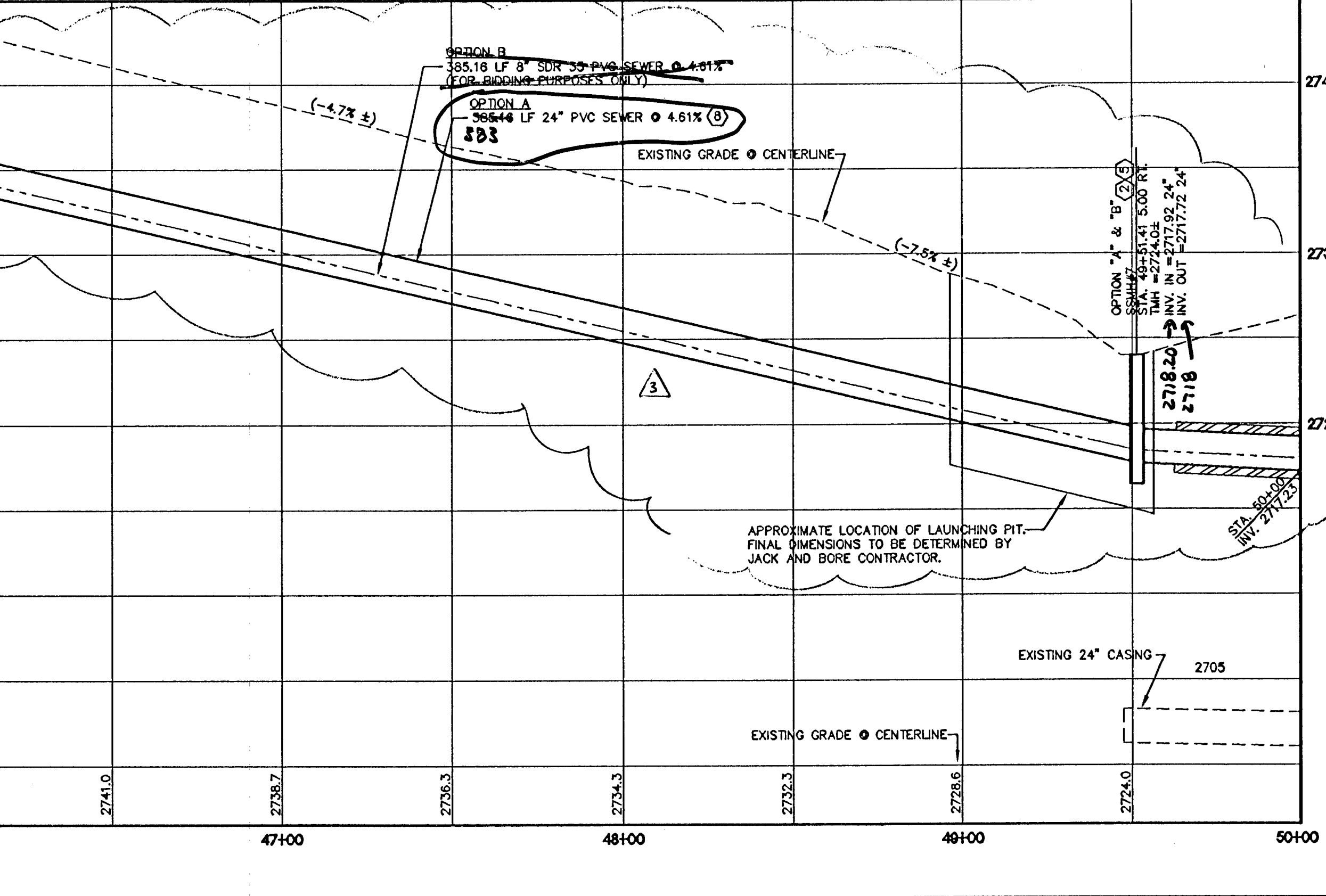
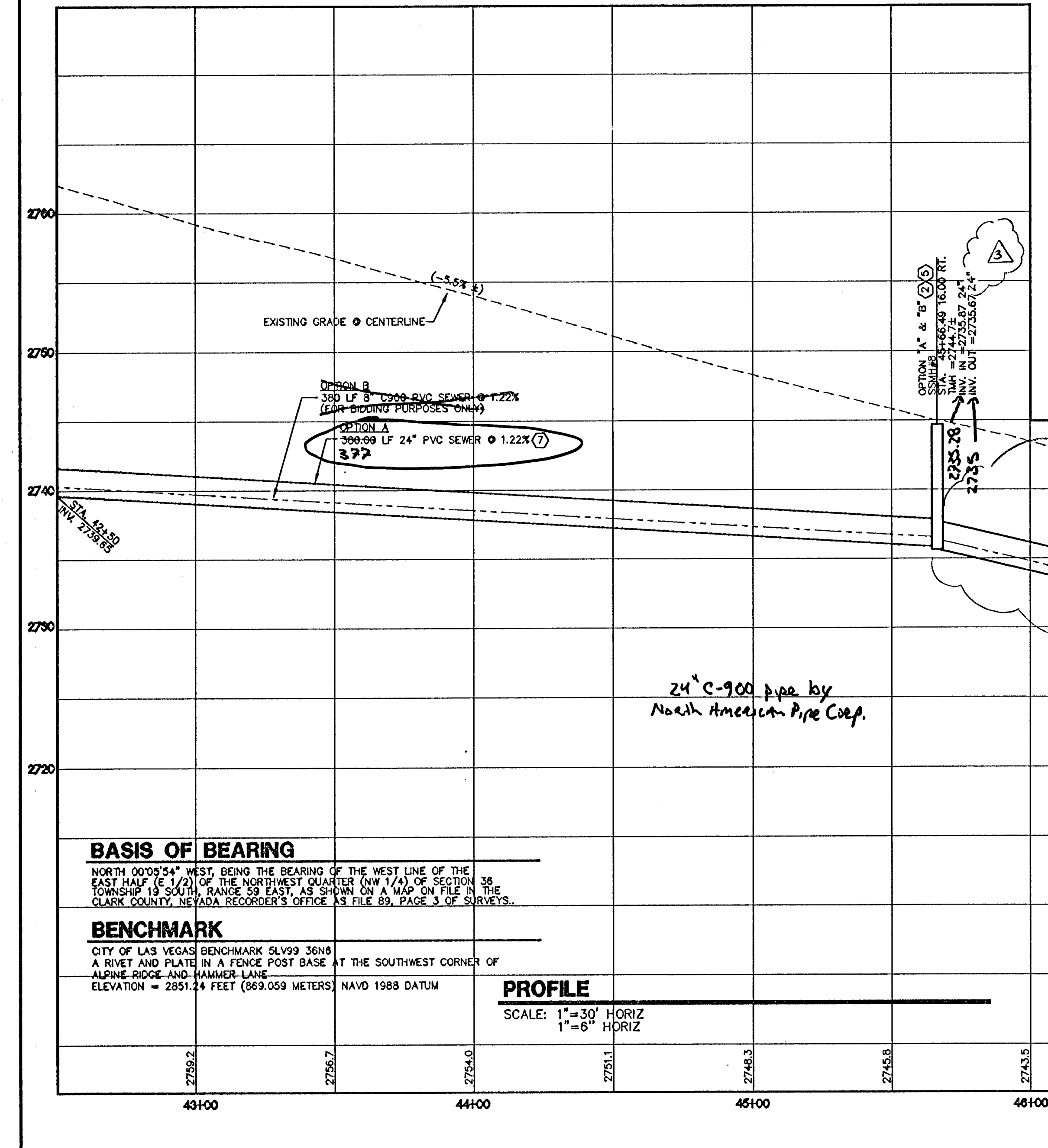
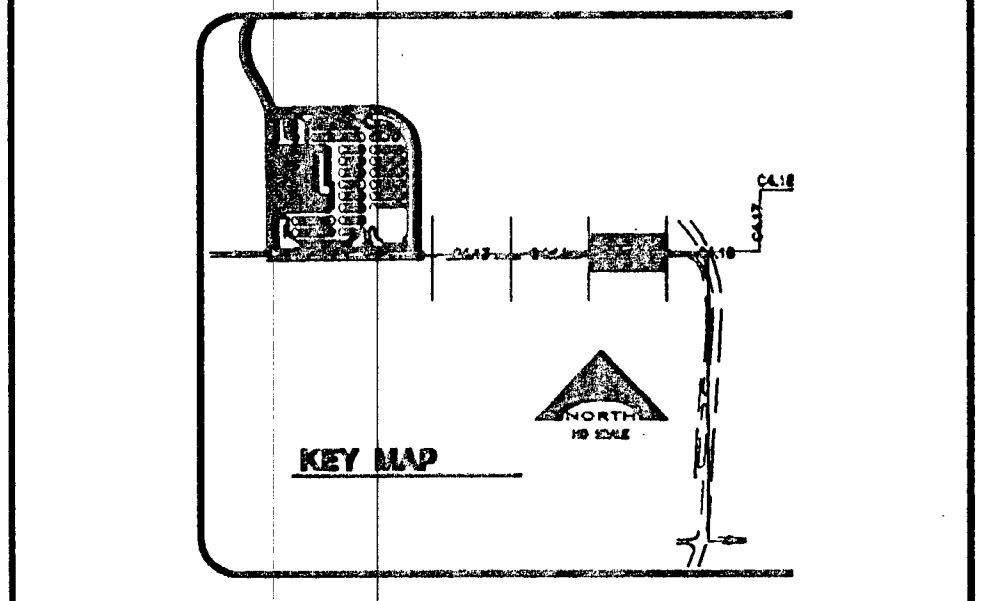
DISCLAIMER NOTE

UTILITY LOCATIONS SHOWN HEREON ARE APPROXIMATE ONLY. IT SHALL BE THE CONTRACTOR'S RESPONSIBILITY TO DETERMINE THE EXACT HORIZONTAL AND VERTICAL LOCATION OF ALL EXISTING UNDERGROUND AND OVERHEAD UTILITIES PRIOR TO COMMENCING CONSTRUCTION. NO REPRESENTATION IS MADE THAT ALL EXISTING UTILITIES ARE SHOWN HEREON. THE ENGINEER ASSUMES NO RESPONSIBILITY FOR UTILITIES NOT SHOWN OR UTILITIES NOT SHOWN IN THEIR PROPER LOCATION.

Call before you Dig
Avoid cutting underground utility lines. It's costly.
1-800-367-2600
CLARK COUNTY PUBLIC WORKS DEPARTMENT
1-702-455-7544

Avoid overhead power line contact
Call before you OVERHEAD
1-702-227-2929
NEVADA POWER DEVELOPMENT AND SAFETY SERVICE DEPARTMENT

Call before you Dig
Underground
1-702-227-2929
NEVADA POWER DEVELOPMENT AND SAFETY SERVICE DEPARTMENT



NOTE: DURING INSTALLATION OF SANITARY SEWER MAIN, THE GENERAL CONTRACTOR SHALL COORDINATE ACCESS WITH ADJACENT GRAVEL PIT OWNER. IF NECESSARY THE GENERAL CONTRACTOR SHALL PROVIDE AN ALTERNATE TEMPORARY ACCESS.

Professional Engineer Seal for VERNON R. HARKINS, CIVIL, No. 009899, Exp. 6/30/13.

PROJECT NO. 15-45
DESIGN REVIEW
APPROVED BY
DATE: OCTOBER 31, 2011
DRAWN BY
CHECKED BY
SUBMITTED
DATE PROJECT NO. 00-0816

KLING STUBBINS CONSULTING ENGINEERS, INC.
6725 Alamo Circle, Suite 200
Las Vegas, Nevada 89118
(702) 796-7978
(702) 451-2596 FAX

CLARK COUNTY SCHOOL DISTRICT
DESIGN MANAGEMENT / PLANNING AND DESIGN
LAS VEGAS, NEVADA 89121

KGA ARCHITECTURE
9075 West Doble Drive, Third Floor
Las Vegas, Nevada 89148
702.367.6900
www.KGAarchitecture.com
LAS VEGAS, NEVADA AUSTIN

CLARK COUNTY SCHOOL DISTRICT
DESIGN MANAGEMENT / PLANNING AND DESIGN
4170 McLEOD DRIVE
LAS VEGAS, NEVADA 89121

CCSD NORTHWEST SATELLITE TRANSPORTATION FACILITY
PROJECT
DRAWING TITLE
PLAN AND PROFILE-OFFSITE SEWER

SHEET NO. **C4.15**
SHEET 44 OF 83
CLV #41249 715-188
HTE #11-19927
RENOTED 10/2012

BASIS OF BEARING
NORTH 00°05'54" WEST, BEING THE BEARING OF THE WEST LINE OF THE EAST HALF (E 1/2) OF THE NORTHWEST QUARTER (NW 1/4) OF SECTION 38, TOWNSHIP 19 SOUTH, RANGE 59 EAST, AS SHOWN ON A MAP ON FILE IN THE CLARK COUNTY, NEVADA RECORDER'S OFFICE, AS FILE 89, PAGE 3 OF SURVEYS.

BENCHMARK
CITY OF LAS VEGAS BENCHMARK 5L199 36N8
A RIVET AND PLATE IN A FENCE POST BASE AT THE SOUTHWEST CORNER OF ALPINE RIDGE AND HAMMER LANE
ELEVATION = 2851.24 FEET (869.059 METERS) NAVD 1988 DATUM

PROFILE
SCALE: 1"=30' HORIZ
1"=6" HORIZ