

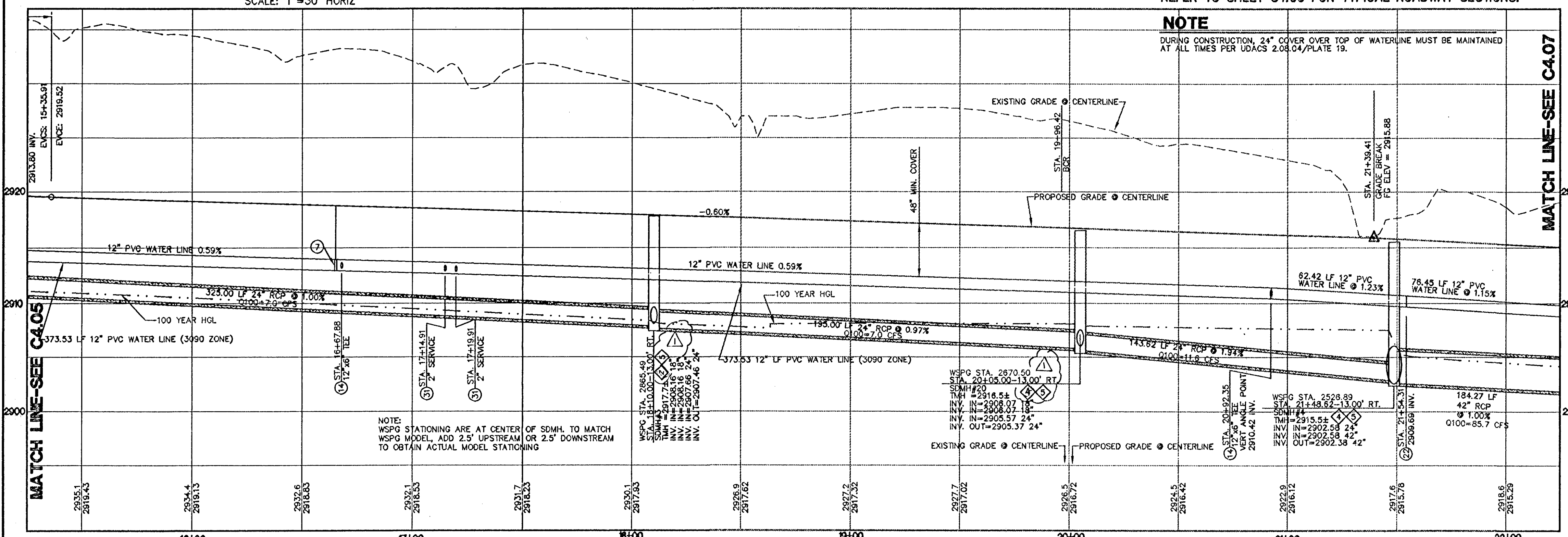
REVISIONS			
REV	DESCRIPTION	DATE	BY
1	COORDINATED MANHOLE SIZES, REV. SFLT	3/1/12	

DISCLAIMER NOTE
 UTILITY LOCATIONS SHOWN HEREON ARE APPROXIMATE ONLY. IT SHALL BE THE CONTRACTOR'S RESPONSIBILITY TO DETERMINE THE EXACT HORIZONTAL AND VERTICAL LOCATION OF ALL EXISTING UNDERGROUND AND OVERHEAD UTILITIES PRIOR TO COMMENCING CONSTRUCTION. NO REPRESENTATION IS MADE THAT ALL EXISTING UTILITIES ARE SHOWN HEREON. THE ENGINEER ASSUMES NO RESPONSIBILITY FOR UTILITIES NOT SHOWN OR UTILITIES NOT SHOWN IN THEIR PROPER LOCATION.

Call before you Dig
 Avoid cutting underground utility lines. It's costly.
 1-800-227-2600
 CLARK COUNTY PUBLIC UTILITIES
 1-702-455-7544

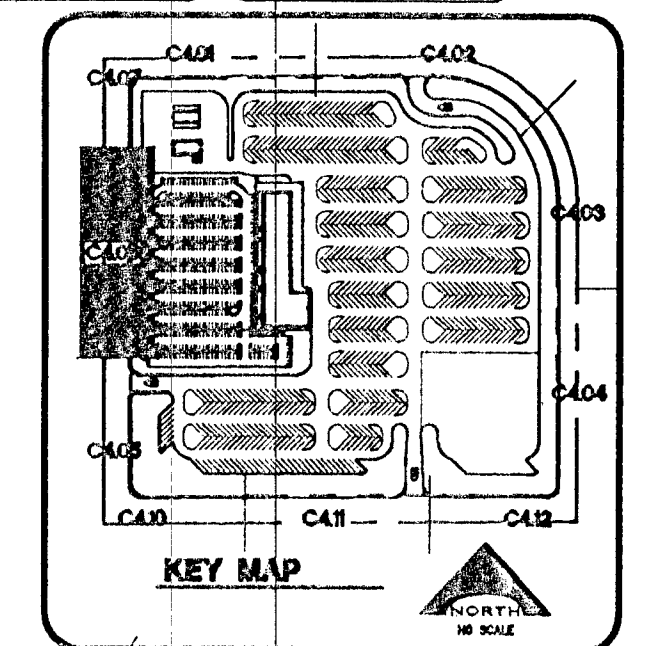
SHAUMBER ROAD-STA. 15+25 TO STA. 22+25
 SCALE: 1"=30' HORIZ

NOTE
 REFER TO SHEET C4.00 FOR TYPICAL ROADWAY SECTIONS.



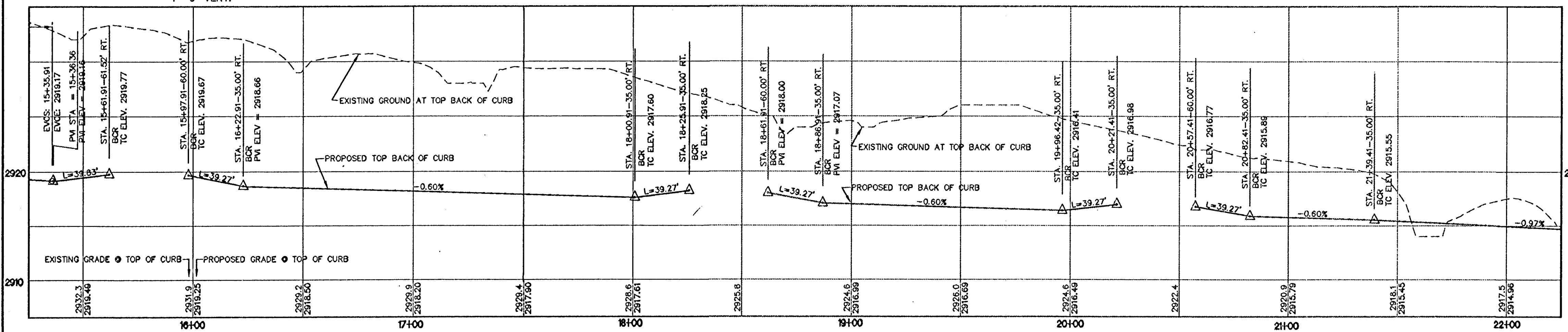
NOTE
 DURING CONSTRUCTION, 24" COVER OVER TOP OF WATERLINE MUST BE MAINTAINED AT ALL TIMES PER UDACS 2.08.04/PLATE 19.

NOTE
 REFER TO SHEET C4.05 FOR KEYNOTES.



PROFILE
 SCALE: 1"=30' HORIZ
 1"=6' VERT.

*As-built
 Tard Inc
 Duly
 10-1-13*



PROFILE-TOP OF CURB
 SCALE: 1"=30' HORIZ
 1"=6' VERT.

WATER MAIN JOINT DEFLECTION (PVC, 4" - 24")
 PVC PIPE SHALL BE DEFLECTED AT THE JOINT ONLY. THE MAXIMUM ALLOWABLE DEFLECTION SHALL BE ONE (1) DEGREE PER JOINT WITH A MINIMUM RADIUS OF CURVATURE OF 1,150 FEET, PER UDACS 2.07.01 AND 2.07.02. FOR CHANGES IN DIRECTION EXCEEDING THE MAXIMUM ALLOWABLE JOINT DEFLECTION, FITTINGS SHALL BE USED.

NOTES
 REFER TO SIGNAGE AND STRIPING SHEETS FOR LOCATIONS OF SIGHT VISIBILITY ZONES. EACH CORNER OF EVERY INTERSECTION SHALL HAVE A SIGHT VISIBILITY ZONE REGARDLESS OF RIGHT OF WAY WIDTH. NO WALLS, FENCES, TREES, SHRUBS, UTILITY APURTANCES OR ANY OTHER OBJECT, OTHER THAN TRAFFIC CONTROL AND STREET LIGHT POLES, MAY BE CONSTRUCTED OR INSTALLED WITHIN THE SIGHT VISIBILITY ZONE UNLESS SAID OBJECT IS MAINTAINED AT LESS THAN 24 INCHES IN HEIGHT, MEASURED FROM TOP OF CURB, OR WHERE NO CURB EXISTS, A HEIGHT OF 27 INCHES MEASURED FROM THE TOP OF ASPHALT, GRAVEL OR PAVEMENT STREET SURFACE.

LINE TABLE		
LINE	LENGTH	BEARING
L23	253.41	N00°05'49"W
L47	102.03	N01°22'13"W
L123	178.00	N00°05'49"W
L134	109.51	N00°05'49"W
L145	57.00	N00°05'49"W

CURVE TABLE			
CURVE	LENGTH	RADIUS	"A" "B"
C1	47.34	30.00	8.0' 8.0'
C12	39.27	25.00	8.0' 8.0'
C13	38.71	25.00	21.5' 4.5'
C26	39.83	25.00	8.0' 8.0'
C83	39.27	25.00	9.5' 4.5'
C88	39.27	25.00	8.0' 8.0'
C89	39.27	25.00	9.5' 4.5'
C79	39.28	25.00	8.0' 8.0'
C80	39.27	25.00	9.5' 4.5'
C98	48.49	30.00	9.5' 4.5'
C97	138.66	835.00	

BASIS OF BEARING
 NORTH 00°05'44" WEST, BEING THE BEARING OF THE WEST LINE OF THE EAST HALF (E 1/2) OF THE NORTHWEST QUARTER (NW 1/4) OF SECTION 38 TOWNSHIP 19 SOUTH, RANGE 59 EAST, AS SHOWN ON A MAP ON FILE IN THE CLARK COUNTY, NEVADA RECORDER'S OFFICE AS FILE 89, PAGE 3 OF SURVEYS.

BENCHMARK
 CITY OF LAS VEGAS BENCHMARK SLV99 36N6
 A RIVET AND PLATE IN A FENCE POST BASE AT THE SOUTHWEST CORNER OF ALPINE RIDGE AND HAMMER LANE
 ELEVATION = 2851.24 FEET (869.059 METERS) NAVD 1988 DATUM

APPROVED FOR CONSTRUCTION
Dave Gregory
 LAS VEGAS VALLEY WATER DISTRICT ENGINEERING SERVICES MANAGER
 PROJECT NO. 118879 DATE 12/01/11

L. NELSON CONSULTING ENGINEERS, INC.
 6765 West Rumbold Road, Suite 200
 Las Vegas, Nevada 89116
 (702) 491-2248 FAX
 (702) 491-2248

KGA ARCHITECTURE
 9075 West Diablo Drive, Third Floor
 Las Vegas, Nevada 89148
 702.367.6900
 www.kgaarchitecture.com

CLARK COUNTY SCHOOL DISTRICT
 DESIGN MANAGEMENT / PLANNING AND DESIGN
 LAS VEGAS, NEVADA 89121

CCSD NORTHWEST SATELLITE TRANSPORTATION FACILITY
 4170 McLEOD DRIVE

PLAN AND PROFILE-SHAUMBER ROAD

SHEET NO. **C4.06**
 SHEET 35 OF 83
 CLV #41249 **7/5-188**
 HTE #11-19927