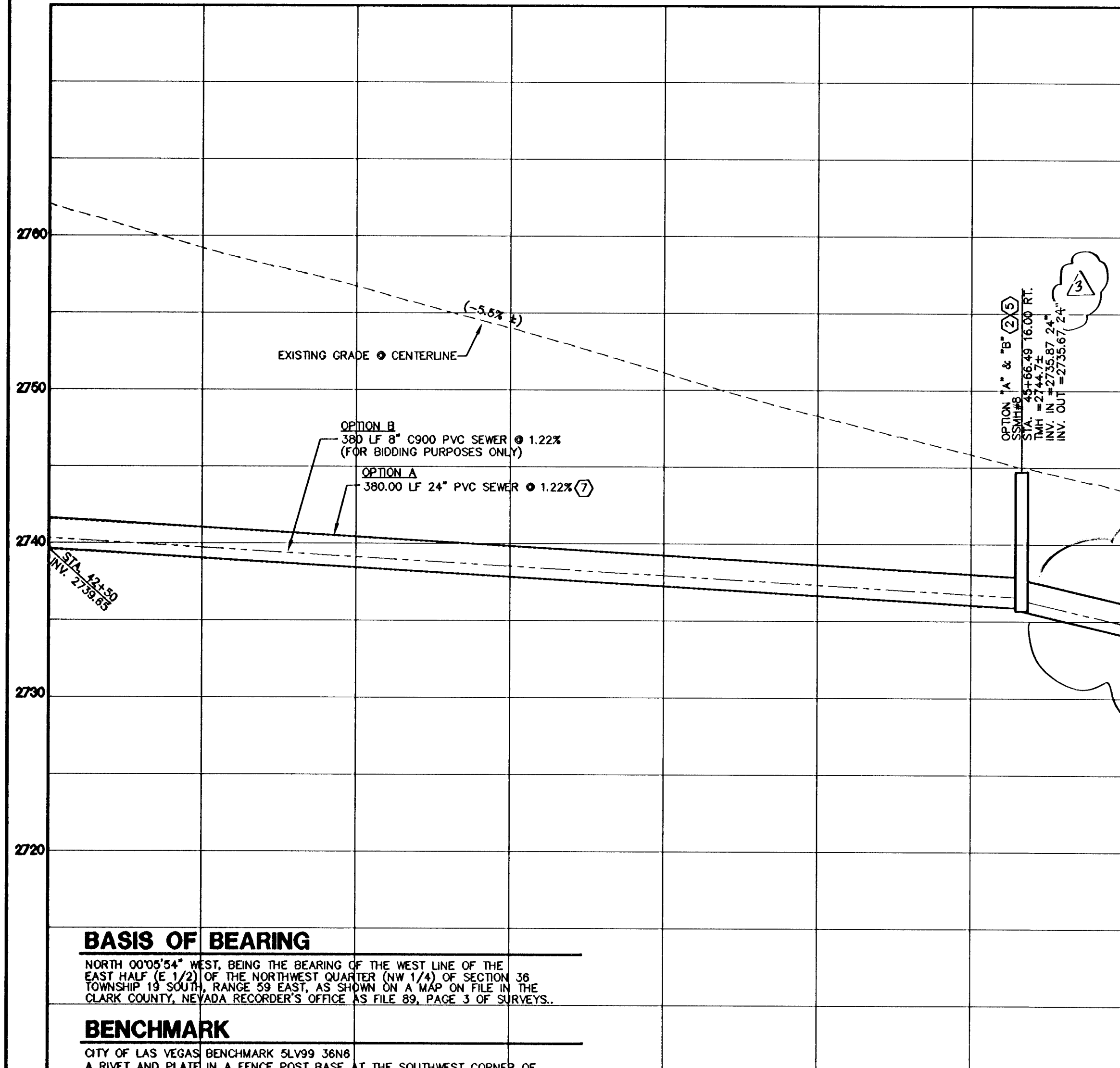


WASHBURN ROAD-STA. 42+50 TO STA. 50+00 CLARK COUNTY
SCALE: 1"=30' HORIZ



BASIS OF BEARING

NORTH 00°05'54" WEST, BEING THE BEARING OF THE WEST LINE OF THE EAST HALF (E 1/2) OF THE NORTHWEST QUARTER (NW 1/4) OF SECTION 36 TOWNSHIP 19 SOUTH, RANGE 59 EAST, AS SHOWN ON A MAP ON FILE IN THE CLARK COUNTY, NEVADA RECORDER'S OFFICE AS FILE 89, PAGE 3 OF SURVEYS.

BENCHMARK

CITY OF LAS VEGAS BENCHMARK 5LV99 36N8 A RIVET AND PLATE IN A FENCE POST BASE AT THE SOUTHWEST CORNER OF ALPINE RIDGE AND HAMMER LANE ELEVATION = 2891.24 FEET (869.059 METERS) NAVD 1988 DATUM

PROFILE

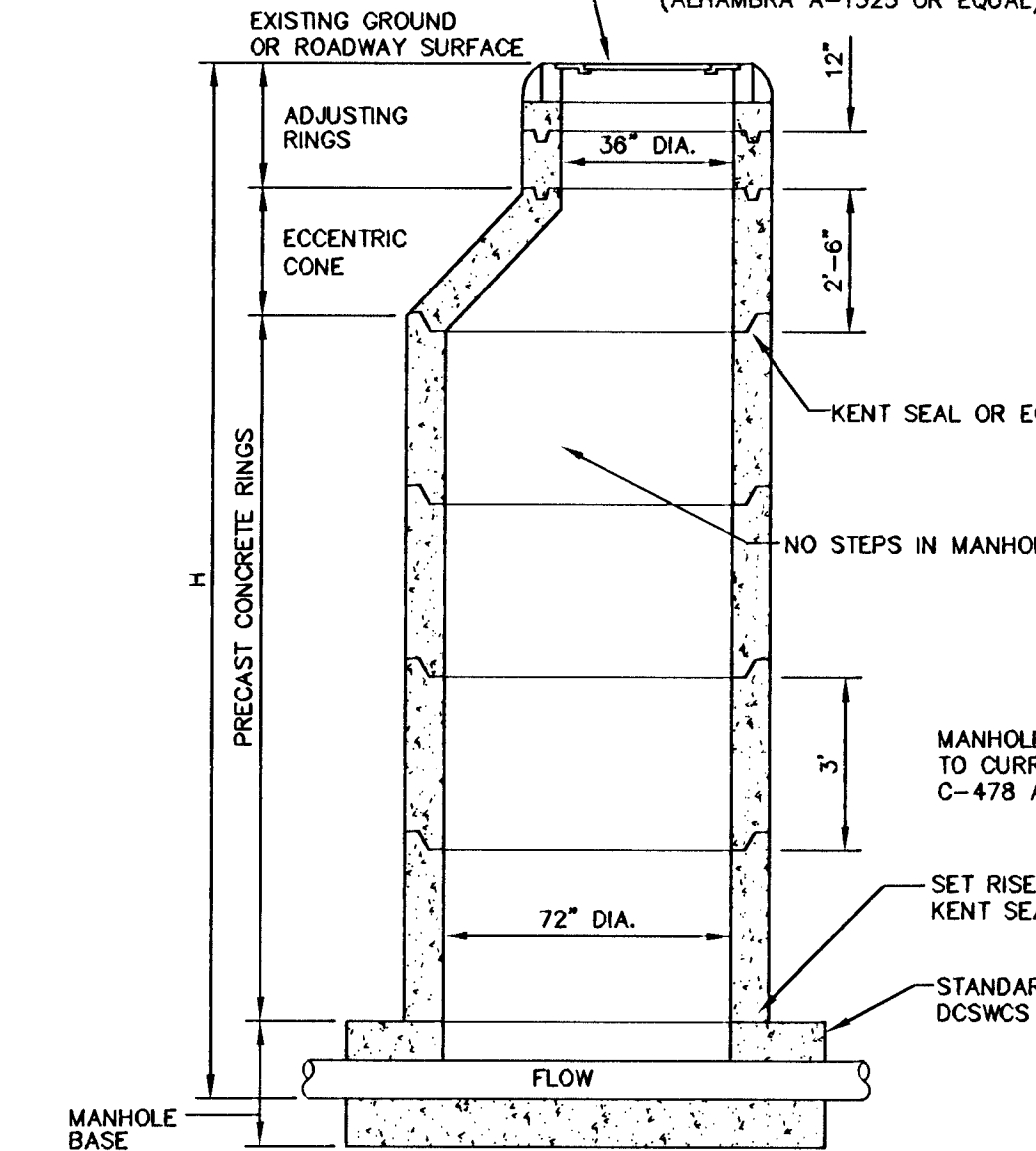
SCALE: 1"=30' HORIZ
1"=6" VERT

SANITARY SEWER KEY NOTES

1. CONSTRUCT A STANDARD 48" PRECAST MANHOLE PER DCSWCS DRAWING No. SD-1A AND SD-1B.
2. INSTALL A CONCRETE COLLAR PER DCSWCS DRAWING No. SD-4.
3. TRENCH SECTION PER DCSWCS DRAWING No. SD-18.
4. INSTALL NEW SANITARY SEWER MAIN UNDER EXISTING WATER LATERAL PER DCSWCS DRAWING No. SD-21.
5. INSTALL A STANDARD 72" PRECAST MANHOLE PER DCSWCS DRAWING No. SD-1A AND SD-1B.
6. INSTALL A LOCKING MANHOLE COVER PER DCSWCS DRAWING No. SD-3.
7. INSTALL 24" C905 WATER QUALITY PIPE, PIPE TO BE INSTALLED PER MANUFACTURER'S SPECIFICATIONS AND REQUIREMENTS FOR DEEP INSTALLATION.
8. INSTALL 24" SS ULTRA CORR/ULTRA RIB PIPE USING A CLASS 1B (ASTM BEDDING CLASSIFICATION) BEDDING, PIPE TO BE INSTALLED PER MANUFACTURER'S SPECIFICATIONS AND REQUIREMENTS FOR DEEP INSTALLATION.
9. INSTALL A SPECIAL MANHOLE PER DETAIL ON SHEET C4.15, H20 RATED.
10. CONSTRUCT A STANDARD 60" PRECAST MANHOLE PER DCSWCS DRAWING No. SD-1A AND SD-1B.
11. TRENCH SECTION PER DCSWCS DWG. No. SD-16. COMPACT TO 95% MIN. DENSITY.

CONSTRUCTION NOTES

1. SAWCUT EXISTING AC PAVEMENT AND RESTORE PER CCAUSD No. 500 AND TRENCH PER CCAUSD No. 503 AND DCSWCS STANDARDS.
 2. CONTRACTOR TO REPLACE ALL OBLITERATED STRIPING, INSTALL NEW 4" WHITE EDGE LINE 2" FROM EDGE OF NEW PAVEMENT. APPROXIMATE LIMITS OF SAWCUT.
 3. REPLACE MEDIAN ISLAND PER CCAUSD DRAWING No. 218.
 4. FINAL LIMITS OF TRENCH SECTION AND ROTOMILL TO BE DETERMINED BY CITY OF LAS VEGAS INSPECTOR.
 5. CONTRACTOR TO RESTORE DRAINAGE SWALE AND FLOWLINE UPON COMPLETION OF CONSTRUCTION ACTIVITIES.
 6. PROTECT IN PLACE.
- REMOVE AND REPLACE EXISTING AC WITH AC SECTION ON C4.00. ALL TRENCHING AND PAVEMENT RESTORATION SHALL BE PER CCAUSD 500 AND 503.



DEEP MANHOLE DETAIL
NOT TO SCALE

CLARK COUNTY DEPARTMENT OF PUBLIC WORKS DEVELOPMENT REVIEW

ACCEPTANCE OF PLANS FOR FILING
BY: *[Signature]* 10/24/12

ACCEPTANCE OF THESE PLANS FOR FILING SHALL NOT BE CONSTRUED TO BE A PERMIT FOR OR AN APPROVAL OF ANY VIOLATION OF ANY OF THE PROVISIONS OF THE STATE OR COUNTY LAWS AND/OR SPECIFICATIONS. CLARK COUNTY SHALL BE HELD FREE FROM DAMAGES WHICH MAY RESULT FROM THE CONSTRUCTION OF THE IMPROVEMENTS FROM THE ENGINEERING DESIGN DEPICTED HEREIN.

REVISIONS			
REV	DESCRIPTION	DATE	BY
1	REVISE VERTICAL ALIGNMENT OF 15' TO 12' 11" 10/24/12	10/24/12	[Signature]

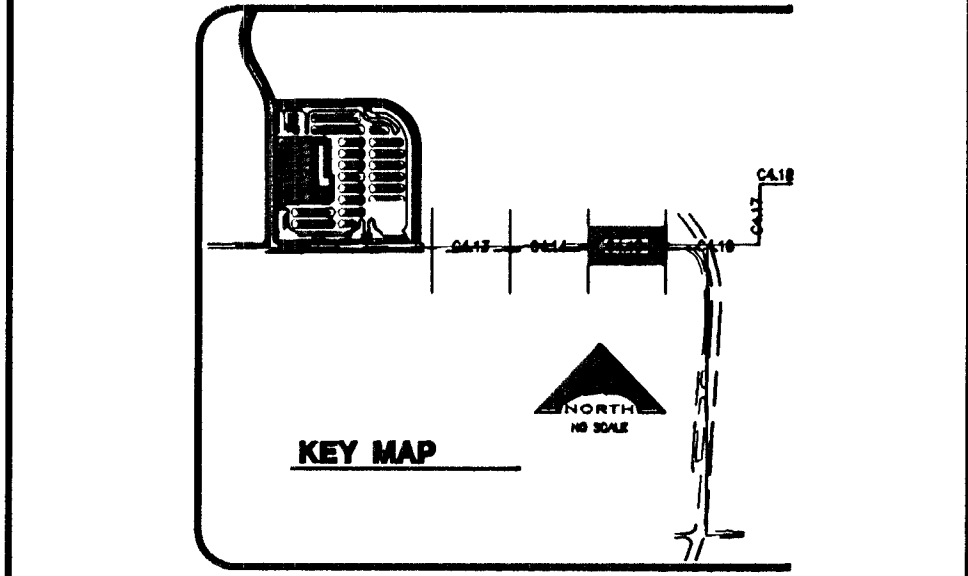
DISCLAIMER NOTE

UTILITY LOCATIONS SHOWN HEREON ARE APPROXIMATE ONLY. IT SHALL BE THE CONTRACTOR'S RESPONSIBILITY TO DETERMINE THE EXACT HORIZONTAL AND VERTICAL LOCATION OF ALL EXISTING UNDERGROUND AND OVERHEAD UTILITIES PRIOR TO COMMENCING CONSTRUCTION. NO REPRESENTATION IS MADE THAT ALL EXISTING UTILITIES ARE SHOWN HEREON. THE ENGINEER ASSUMES NO RESPONSIBILITY FOR UTILITIES NOT SHOWN OR UTILITIES NOT SHOWN IN THEIR PROPER LOCATION.

Call before you dig
Avoid cutting underground utility lines.
1-800-227-2600
CLARK COUNTY PUBLIC UTILITIES
1-702-455-7344

Avoid overhead power line contact
Call before you OVERHEAD
1-702-227-2929
NEVADA POWER ENVIRONMENT AND SAFETY SERVICES DEPARTMENT

CALL BEFORE YOU DIG
UNDERGROUND
1-702-455-7311
CLARK COUNTY PUBLIC UTILITIES
1-702-455-4611
USE KNEE AREA COMPARTMENT RATE 2009



VERNON R. HARKINS
EXP. 6/30/15
No. 009898
1/24/12

PROJECT NO. 1549
DCSD REVIEW
APPROVED BY
DATE
DATE OCTOBER 31, 2011
DRAWN BY
CHECKED BY
SUBMITTAL
7/17 PROJECT NO. 08-816

L.P.L. NEELSON CONSULTING ENGINEERS, INC.
6765 West Russell Road, Suite 200
Las Vegas, Nevada
(702) 798-7978
(702) 461-2266 FAX

CLARK COUNTY SCHOOL DISTRICT
DESIGN MANAGEMENT / PLANNING AND DESIGN
LAS VEGAS, NEVADA 89121

CCSD NORTHWEST SATELLITE TRANSPORTATION FACILITY
4170 McLEOD DRIVE
LAS VEGAS, NEVADA 89121

G.A. ARCHITECTURE
West Diablo Drive, Third Floor 1701 Directors Boulevard, Suite 770
Las Vegas, Nevada 89148
357-6900
www.GAarchitecture.com
AUSTIN

CLARK COUNTY SCHOOL DISTRICT
DESIGN MANAGEMENT / PLANNING AND DESIGN
LAS VEGAS, NEVADA 89121

CCSD NORTHWEST SATELLITE TRANSPORTATION FACILITY
4170 McLEOD DRIVE
LAS VEGAS, NEVADA 89121

PLAN AND PROFILE-OFFSITE SEWER

SHEET NO. C4.15