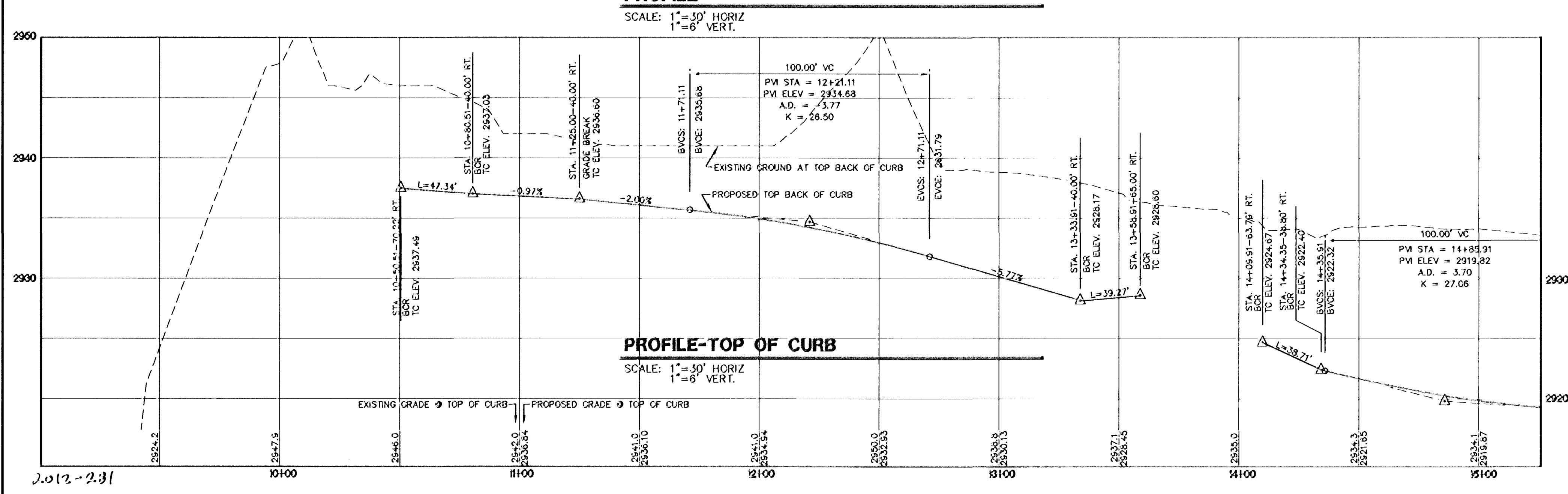
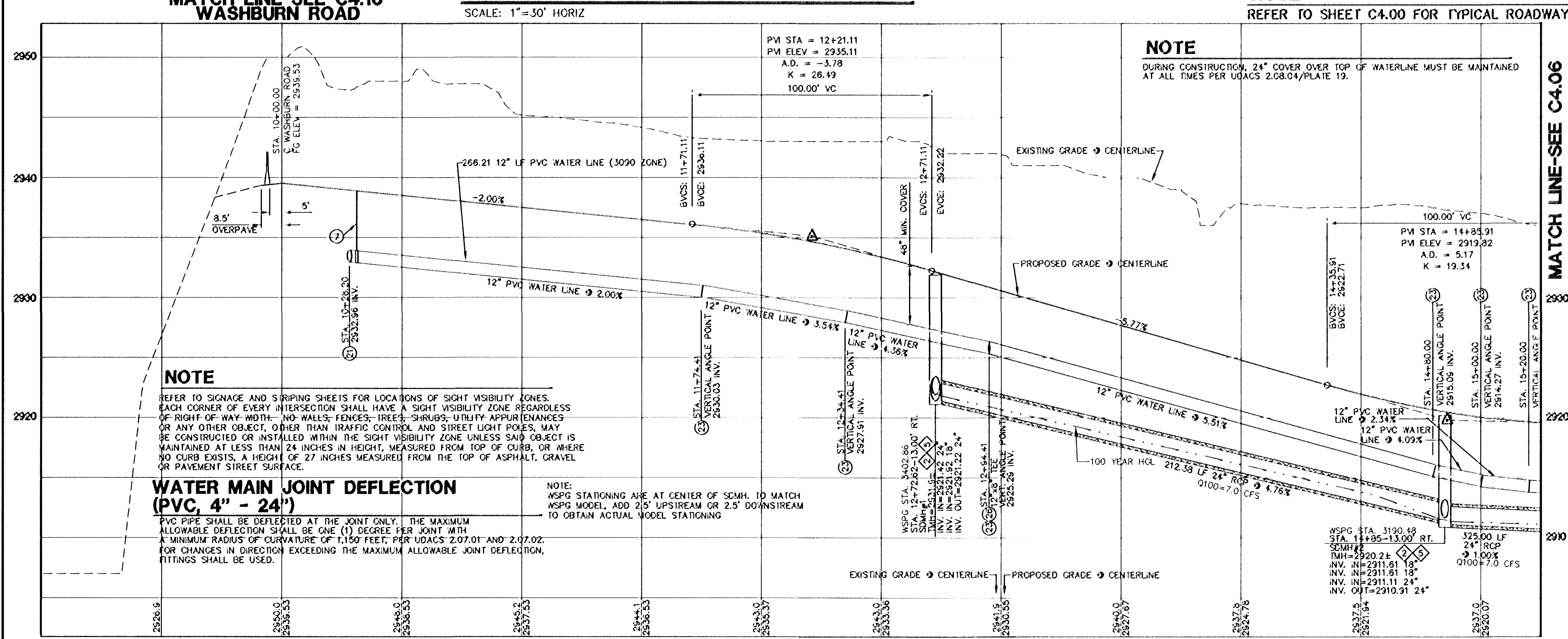


- ### CONSTRUCTION KEY NOTES
- CONSTRUCT TYPE 'L' CURB AND GUTTER PER C.C.A.U.S.D. NO. 216 OVER 8" MIN. TYPE II BASE COMPACTED TO 95% MIN. UNLESS OTHERWISE NOTED IN THE PROJECT GEOTECHNICAL INVESTIGATION.
 - CONSTRUCT TYPE 'A' CURB PER DETAIL 1 ON SHEET C6.01.
 - CONSTRUCT 2" CONCRETE VALLEY GUTTER PER DETAIL 2 ON SHEET C6.01.
 - CONSTRUCT 4" CONCRETE VALLEY GUTTER PER DETAIL 3 ON SHEET C6.01.
 - CONSTRUCT CONCRETE SIDEWALK PER C.C.A.U.S.D. NO. 234.
 - CONSTRUCT SIDEWALK RAMP PER C.C.A.U.S.D. NO. 235 CASE 1.
 - CONSTRUCT COMMERCIAL DRIVEWAY PER C.C.A.U.S.D. NO. 225 WITH GEOMETRICS OF C.C.A.U.S.D. 222A.
 - CONSTRUCT HANDICAP AREA PER DETAIL 4 ON SHEET C6.01.
 - CONSTRUCT MODIFIED 'L' CURB FROM BCR TO BCR PER DETAIL 11 SHEET C6.01.
 - INSTALL 3" FLUME PER DETAIL 5 ON SHEET C6.01.
 - INSTALL 6" FLUME PER DETAIL 6 ON SHEET C6.01.
- ### WATER KEY NOTES
- NOT ALL ITEMS ARE USED ON THIS SHEET
- INSTALL 6" FIRE HYDRANT ASSEMBLY (INCLUDES 6" GATE VALVE) PER UDACS. PLATE NO. 40. PROVIDE A MINIMUM 3' CLEARANCE AROUND HYDRANT.
 - SEE GENERAL UTILITY CONSTRUCTION NOTE #16 ON SHEET C5.02.
 - PROVIDE A MINIMUM OF 18" VERTICAL CLEARANCE BETWEEN WATER AND SEWER / STORM DRAIN LINES WITH SEWER / STORM DRAIN LINES BEING BELOW WATER LINES.
 - INSTALL VEHICULAR PROTECTION BOLLARD PER UDACS. PLATE NO. 75. FOUR (4) BOLLARDS PER HYDRANT.
 - INSTALL 8" REDUCED PRESSURE DETECTOR ASSEMBLY ABOVE FG, PER U.D.A.C.S. PLATE NO. 58.
 - INSTALL A 2" METER PER UDACS PLATE NO. 4 (POTABLE).
 - INSTALL A 12" GATE VALVE PER UDACS PLATE NO. 30 AND 39.
 - REFER TO LANDSCAPE PLANS FOR CONTINUATION.
 - INSTALL A RPPA PER UDACS PLATE NO. 3.
 - CONTRACTOR TO PROVIDE A MINIMUM OF 4.0' OF COVER ABOVE TOP OF TWELVE INCH (12") AND SMALLER PIPE, BASED ON FINISH GRADE FOR ON-SITE WATERLINES. OFF-SITE PUBLIC WATERLINES LINES IN RIGHT-OF-WAY TO BE A MINIMUM 3.5' (60" R/W), 4.0' (80" R/W) OF COVER BASED ON FINISH GRADE. REFER TO UDACS SECTION 2.08 AND UDACS PLATE NO. 17 FOR ADDITIONAL INFORMATION.
 - REFER TO MECHANICAL / PLUMBING PLANS FOR LOCATION AND ADDITIONAL INFORMATION.
 - INSTALL A 2" RPPA PER UDACS PLATE NO. 3 (POTABLE).
 - INSTALL A 2x4 MANIFOLD.
 - INSTALL 12"x6" IEE WITH 8" GATE VALVE W/THRUST BLOCK PER UDACS PLATE NO. 30, 31 AND 39.
 - INSTALL 8"x8" IEE PER UDACS PLATE NO. 31.
 - INSTALL 8"x6" IEE WITH 6" GATE VALVE PER UDACS PLATE NO. 30, 31 AND 39.
 - INSTALL 3"x9" BEND W/THRUST BLOCK PER UDACS PLATE NO. 31.
 - INSTALL 8"-45" BEND W/THRUST BLOCK PER UDACS PLATE NO. 31.
 - INSTALL 8"-11.25" BEND W/THRUST BLOCK PER UDACS PLATE NO. 31.
 - INSTALL 12"x8" REDUCER W/THRUST BLOCK PER UDACS PLATE NO. 30.
 - INSTALL 12"x12" IEE W/THRUST BLOCK PER UDACS PLATE NO. 31.
 - INSTALL 12"-22.5" BEND W/THRUST BLOCK PER UDACS PLATE NO. 31.
 - INSTALL 12"x8" REDUCER W/THRUST BLOCK PER UDACS PLATE NO. 30.
 - INSTALL 12"x12" IEE W/THRUST BLOCK PER UDACS PLATE NO. 31.
 - INSTALL 12"-22.5" BEND W/THRUST BLOCK PER UDACS PLATE NO. 31.
 - DEFLECT PIPE JOINT 1" MAX. VERTICALLY PER UDACS 2.07.01 AND 2.07.02.
 - INSTALL 3" GATE VALVE PER UDACS PLATE NO. 30 AND 39.
 - INSTALL 12"x8" IEE PER UDACS PLATE NO. 31.
 - INSTALL 12" CAP & 2" BLOWOFF PER UDACS PLATE NO. 36.
 - TRENCH SECTION PER UDACS PLATE NO. 17.
 - INSTALL 24" CAP & 2" BLOWOFF PER UDACS PLATE NO. 36.
 - INSTALL 24" RESILIENT WEDGE GATE VALVE PER DETAIL SHEET C6.02.
 - TYPE "K" COPPER WATERLINE PER UDACS PLATE NO. 4.
 - INSTALL 24"-22.5" ELBOW W/RESTRAINED JOINTS.
 - INSTALL 12"-45" BEND W/THRUST BLOCK PER UDACS PLATE NO. 31.
 - DEFLECT PIPE JOINT 1" MAX. HORIZONTALLY PER UDACS 2.07.01 AND 2.07.02.



- ### STORM DRAIN KEY NOTES
- INSTALL A 18" TYPE I MANHOLE PER C.C.A.U.S.D. 403.
 - INSTALL A 60" TYPE I MANHOLE PER C.C.A.U.S.D. 403.
 - INSTALL A 18" TYPE II MANHOLE PER C.C.A.U.S.D. 405.
 - INSTALL A 60" TYPE III MANHOLE PER C.C.A.U.S.D. 406.
 - INSTALL A CONCRETE COLLAR PER C.C.A.U.S.D. 408.
 - INSTALL A 2.5" GRATE WITH A 10" CURB OPENING MODIFIED TYPE "CM" INLET PER C.C.A.U.S.D. 412A. INLET SHALL INCLUDE A WATER QUALITY STAMP PER C.C.A.U.S.D. 421.
 - INSTALL A JENSEN PRECAST D124248 CATON BASIN.
 - INSTALL A 5" MODIFIED TYPE "CM" INLET PER C.C.A.U.S.D. 412A. INLET SHALL INCLUDE A WATER QUALITY STAMP PER C.C.A.U.S.D. 421.
 - INSTALL A 7.5" GRATE WITH AN 11.25" CURB OPENING MODIFIED TYPE "CM" INLET PER C.C.A.U.S.D. 412A. INLET SHALL INCLUDE A WATER QUALITY STAMP PER C.C.A.U.S.D. 421.
 - INSTALL A 7.5" MODIFIED TYPE "CM" INLET PER C.C.A.U.S.D. 412A. INLET SHALL INCLUDE A WATER QUALITY STAMP PER C.C.A.U.S.D. 421.
 - INSTALL A 10" MODIFIED TYPE "CM" INLET PER C.C.A.U.S.D. 412A. INLET SHALL INCLUDE A WATER QUALITY STAMP PER C.C.A.U.S.D. 421.
 - INSTALL A 12.5" MODIFIED TYPE "CM" INLET PER C.C.A.U.S.D. 412A. INLET SHALL INCLUDE A WATER QUALITY STAMP PER C.C.A.U.S.D. 421.
 - INSTALL A 27.5" MODIFIED TYPE "CM" INLET PER C.C.A.U.S.D. 412A. INLET SHALL INCLUDE A WATER QUALITY STAMP PER C.C.A.U.S.D. 421.
 - INSTALL AN RCP END SECTION PER NDOT DETAIL R-2.3.1.
 - INSTALL A 5" MODIFIED TYPE "CM" INLET PER C.C.A.U.S.D. 412A. INLET SHALL INCLUDE A WATER QUALITY STAMP PER C.C.A.U.S.D. 421.
 - INSTALL AN NDOT TYPE 2 INLET PER D.W.G. NO. R-4.2.1.
 - CAP FOR FUTURE WITH BRICK OR MORTAR. DO NOT USE WOOD. ALL STORM DRAIN PIPE SHALL BE CLASS III (MIN.) UNLESS OTHERWISE NOTED.
- ### BASIS OF BEARING
- NORTH 00°05'54" WEST BEING THE BEARING OF THE WEST LINE OF THE EAST HALF (E 1/2) OF THE NORTHWEST QUARTER (NW 1/4) OF SECTION 36 TOWNSHIP 19 SOUTH, RANGE 59 EAST, AS SHOWN ON MAP ON FILE IN THE CLARK COUNTY, NEVADA RECORDER'S OFFICE AS FILE 39, PAGE 3 OF SURVEYS.
- ### BENCHMARK
- CITY OF LAS VEGAS BENCHMARK SLV99 36N6
A RIVET AND PLATE IN A FENCE POST BASE AT THE SOUTHWEST CORNER OF ALPINE RIDGE AND HAMMER LANE
ELEVATION = 2851.24 FEET (869.059 METERS) NAVD 1988 DATUM
- ### APPROVED FOR CONSTRUCTION
- Dea Gregory*
LAS VEGAS VALLEY WATER DISTRICT ENGINEERING SERVICES MANAGER
- PROJECT NO. 116679 DATE 12/01/11

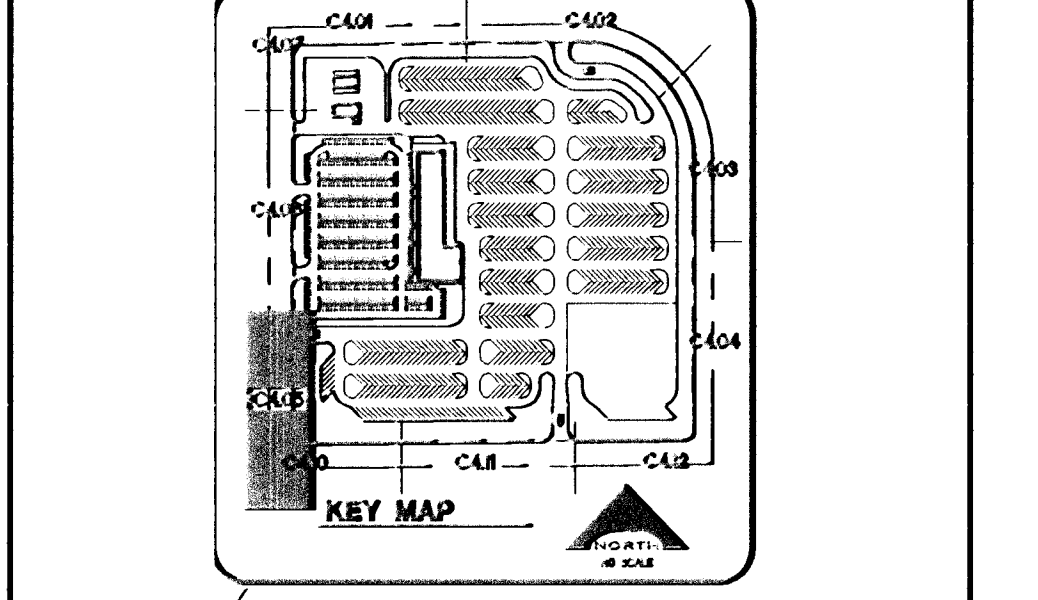
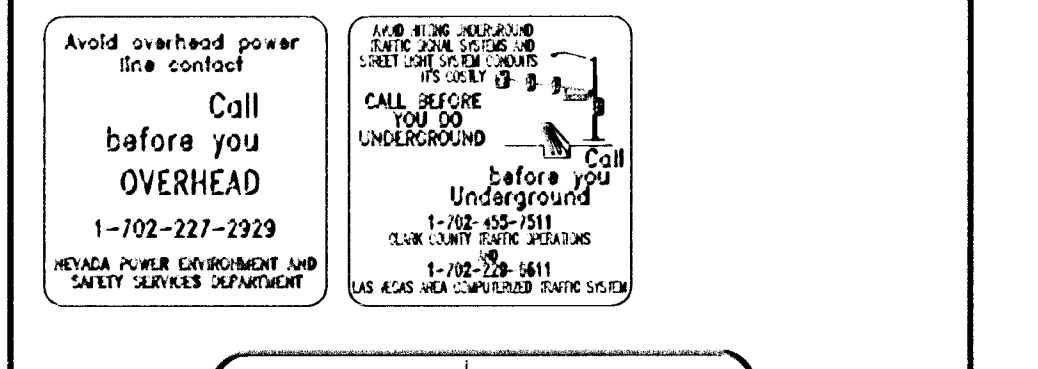
REVISIONS			
REV	DESCRIPTION	DATE	BY

DISCLAIMER NOTE

UTILITY LOCATIONS SHOWN HEREON ARE APPROXIMATE ONLY. IT SHALL BE THE CONTRACTOR'S RESPONSIBILITY TO DETERMINE THE EXACT HORIZONTAL AND VERTICAL LOCATION OF ALL EXISTING UNDERGROUND AND OVERHEAD UTILITIES PRIOR TO COMMENCING CONSTRUCTION. NO REPRESENTATION IS MADE THAT ALL EXISTING UTILITIES ARE SHOWN HEREON. THE ENGINEER ASSUMES NO RESPONSIBILITY FOR UTILITIES NOT SHOWN OR UTILITIES NOT SHOWN IN THEIR PROPER LOCATION.

Call before you Dig
Avoid cutting underground utility lines. Call before you dig.

1-800-227-2600
CLARK COUNTY ENGINEERING SERVICES
1-702-455-7544



CONSULTING ENGINEER - STATE OF NEVADA
VERNON R. HARKINS
EXP. 6/30/13
CIVIL
No. 009298

PROJECT NO. 116679
DATE 12/01/11
DRAWN BY: [Name]
CHECKED BY: [Name]
SUBMITTED: [Date]
PROJECT NO. 116679

CONSULTING ENGINEERS, INC.
6765 West National Road, Suite 200
Las Vegas, Nevada 89119
(702) 798-7970
(702) 451-2266 FAX

L. R. NELSON
REGISTERED CIVIL ENGINEER
PLANNING

KGA ARCHITECTURE
9075 West Diablo Drive, Third Floor
Las Vegas, Nevada 89148
702.367.6500
www.KGAarchitecture.com

CLARK COUNTY SCHOOL DISTRICT
DESIGN MANAGEMENT / PLANNING AND DESIGN
4170 McLEDD DRIVE
LAS VEGAS, NEVADA 89421

CCSD NORTHWEST SATELLITE TRANSPORTATION FACILITY
PROJECT
DRAWING TITLE
PLAN AND PROFILE-SHAUMBER ROAD

SHEET NO. **C4.05**
SHEET 34 OF 83
CLV #41249 7/5-193
HIE #11-19927