



City of Las Vegas, Nevada  
**Department of Design and Development**  
 Thomas B. Graham, AICP, RIA, Director

REVISIONS	DATE

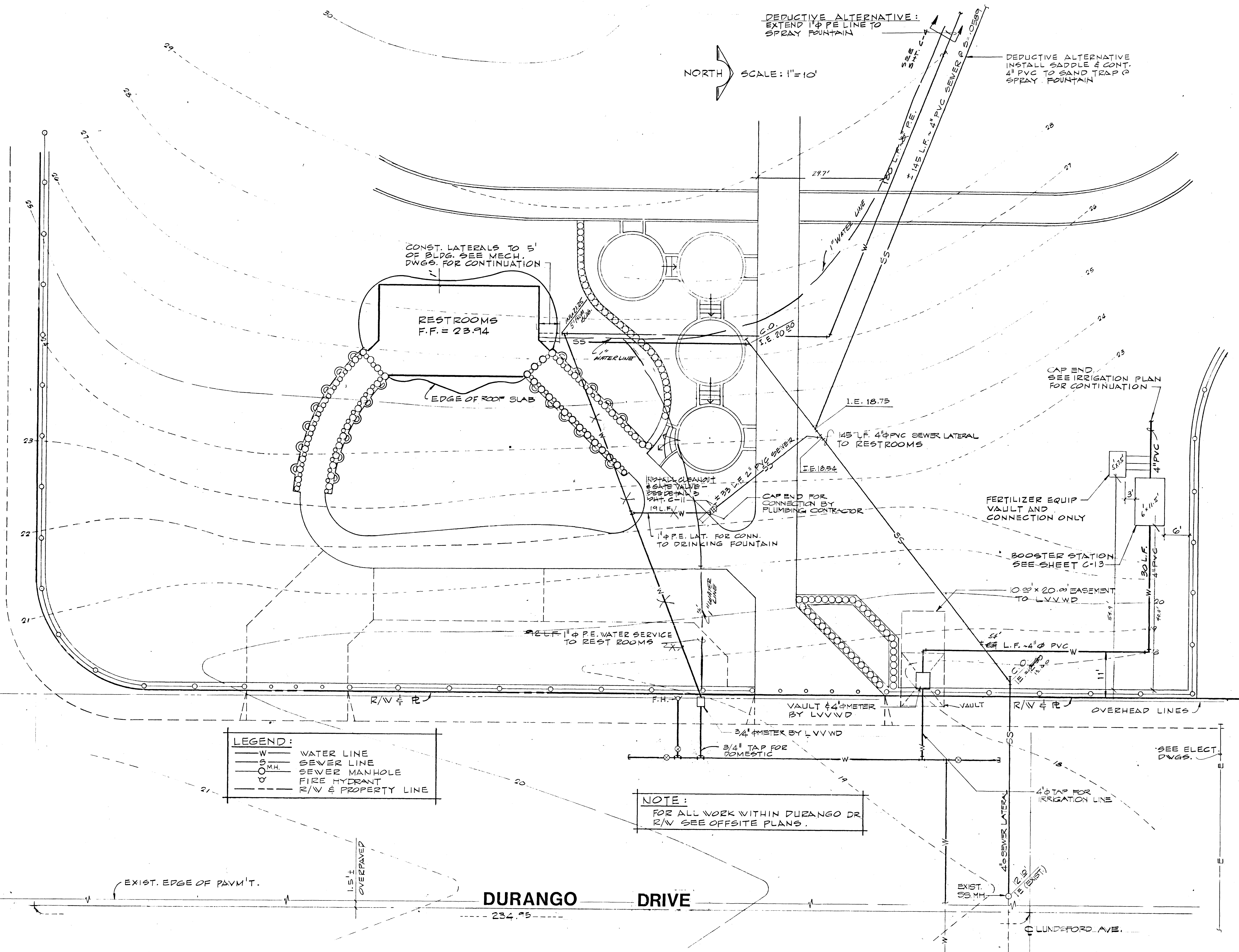


**ANGEL PARK PHASE IIIB**  
**RESTROOM AREA UTILITY PLAN**

PROJECT NO. WU6292  
 DRAWING NO. 650.14-V10  
 SHEET OF 36  
**C-10**

9-13-45

**VENETIAN STRADA**



NORTH SCALE: 1"=10'

DEDUCTIVE ALTERNATIVE:  
 EXTEND 1" P.E. LINE TO  
 SPRAY FOUNTAIN

DEDUCTIVE ALTERNATIVE  
 INSTALL SADDLE & CONT.  
 4" PVC TO SAND TRAP @  
 SPRAY FOUNTAIN

CONST. LATERALS TO 5'  
 OF BLDG. SEE MECH.  
 DWGS. FOR CONTINUATION

RESTROOMS  
 F.F. = 23.94

EDGE OF ROOF SLAB

I.E. 18.75

145 L.F. 4" PVC SEWER LATERAL  
 TO RESTROOMS

I.E. 18.54

HIGHLY CLEANOUT  
 & GATE VALVE  
 SEE DETAIL @  
 PLAT. C-11  
 19 L.F. W

CAP END FOR  
 CONNECTION BY  
 PLUMBING CONTRACTOR

FERTILIZER EQUIP  
 VAULT AND  
 CONNECTION ONLY

BOOSTER STATION  
 SEE SHEET C-13

0 2' x 20' 0" BASEMENT  
 TO LVVWD

54' L.F. 4" PVC W

22 L.F. 1" P.E. WATER SERVICE  
 TO REST ROOMS

VAULT #4" METER  
 BY LVVWD

3/4" METER BY LVVWD

3/4" TAP FOR  
 DOMESTIC

VAULT

OVERHEAD LINES

SEE ELECT.  
 DWGS.

4" TAP FOR  
 IRRIGATION LINE

EXIST. SS MH

CLINDSFORD AVE.

**DURANGO DRIVE**

**LEGEND:**

W	WATER LINE
S	SEWER LINE
○ M.H.	SEWER MANHOLE
□	FIRE HYDRANT
- - -	R/V & PROPERTY LINE

**NOTE:**  
 FOR ALL WORK WITHIN DURANGO DR  
 R/V SEE OFFSITE PLANS.

EXIST. EDGE OF PAVMT.

1.5' OVERPAVE

234.95